

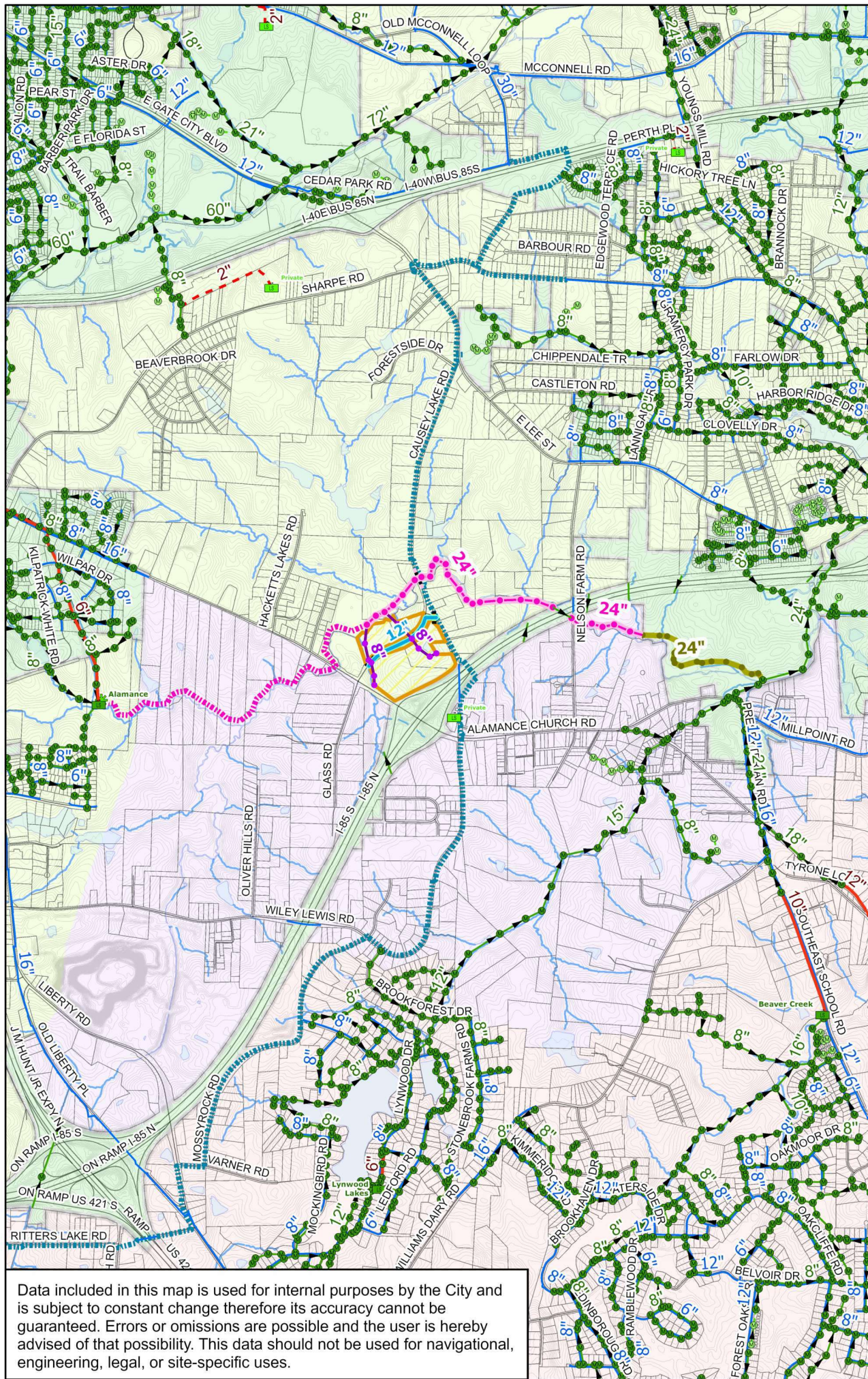


1 inch = 2,640 feet

# Water and Sewer Feasibility Study for: FIGURE 1: 1623, 2921 CAUSEY LAKE RD & 1611 ALLRED FARM WAY

## Legend

- Future Sewer Outfall - CIP Project
- Future Water Main - CIP Project
- Future Sewer Manholes - CIP Project
- Future Utility Crossing
- Dev. Under Construction - Sewer Manhole
- Dev. Under Construction - Sewer Main
- Proposed Sewer Manhole
- Proposed Sewer Main
- Proposed Water Main
- Proposed Utility Crossings
- Proposed Project Area
- Public Lift Station
- Private Lift Station
- Public Sewer Manhole
- Private Sewer Manhole
- Public Force Main
- Private Force Main
- Public Gravity Main
- Private Gravity Main
- Public Water Main
- Private Water Main
- Water
- Stream
- Railroad
- Guilford County Parcels
- Water Sewer Service Area Boundary
- City Limits
- Growth Tier 1
- Growth Tier 2
- Growth Tier 3
- Metro911 Centerline



Data included in this map is used for internal purposes by the City and is subject to constant change therefore its accuracy cannot be guaranteed. Errors or omissions are possible and the user is hereby advised of that possibility. This data should not be used for navigational, engineering, legal, or site-specific uses.





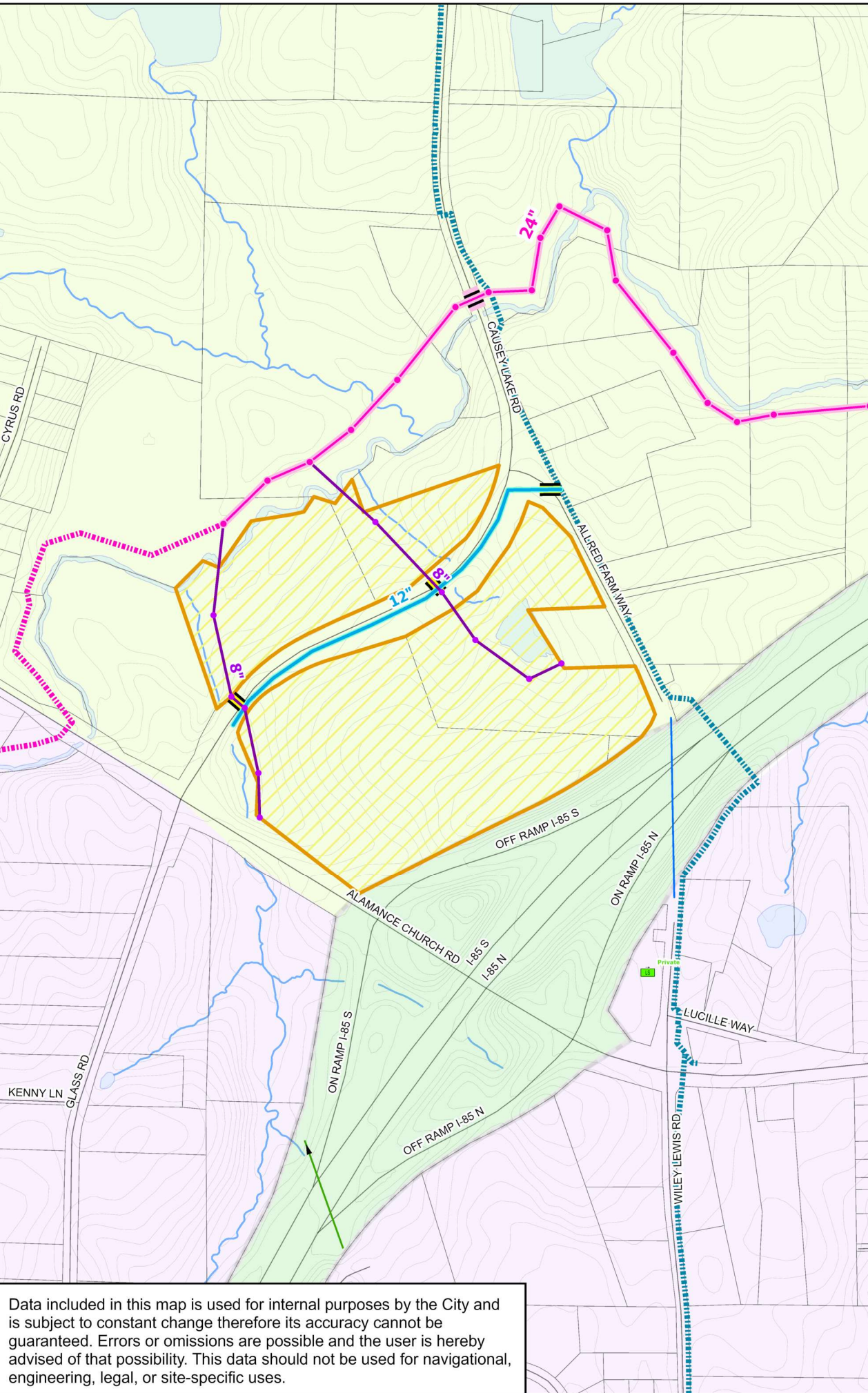
1 inch = 550 feet

# Water and Sewer Feasibility Study for:

## FIGURE 2: 1623, 2921 CAUSEY LAKE RD & 1611 ALLRED FARM WAY

### Legend

- Future Sewer Outfall - CIP Project
- Future Water Main - CIP Project
- Future Sewer Manholes - CIP Project
- Future Sewer Outfall - CIP Project
- Future Utility Crossing
- Dev. Under Construction - Sewer Manhole
- Dev. Under Construction - Sewer Main
- Proposed Sewer Manhole
- Proposed Sewer Main
- Proposed Water Main
- Proposed Utility Crossings
- Proposed Project Area
- Public Lift Station
- Private Lift Station
- Public Sewer Manhole
- Private Sewer Manhole
- Public Force Main
- Private Force Main
- Public Gravity Main
- Private Gravity Main
- Public Water Main
- Private Water Main
- Water
- Stream
- Railroad
- Guilford County Parcels
- Water Sewer Service Area Boundary
- City Limits
- Growth Tier 1
- Growth Tier 2
- Growth Tier 3



Data included in this map is used for internal purposes by the City and is subject to constant change therefore its accuracy cannot be guaranteed. Errors or omissions are possible and the user is hereby advised of that possibility. This data should not be used for navigational, engineering, legal, or site-specific uses.