



SITE & BUILDING AVAILABLE FOR SALE & LEASE

225 INDUSTRIAL DR

GEORGETOWN, SOUTH CAROLINA

HAGOOD MORRISON SIOR, MBA, CRE
Executive Vice President
+1 843 270 5219

HAGOOD S. MORRISON (HAGOOD II) SIOR
Senior Vice President
+1 843 830 9108



PROPERTY SUMMARY

ADDRESS 225 Industrial Drive, Georgetown, SC 29440

COUNTY Georgetown County

TMS # 01-0445-020-09-00

SALE \$1,690,000

LEASE \$14.50 NNN

ACREAGE 4.58 Acres

GROSS BUILDING AREA 13,862 SF

MAIN OFFICE 3,792 SF

SMALLER OFFICE 585 SF

2ND FLOOR WAREHOUSE OFFICE 435 SF

WAREHOUSE 902 SF Metal Storage Building

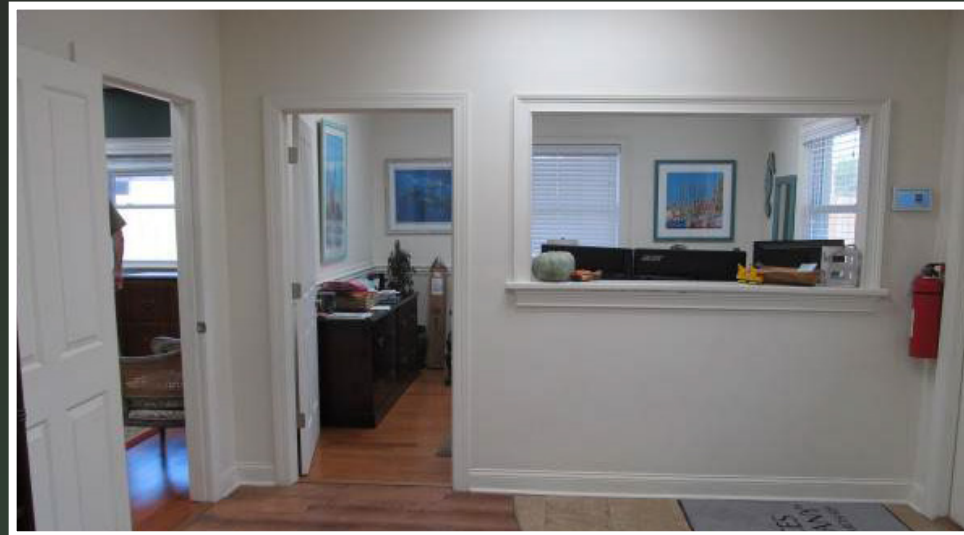
WAREHOUSE 7,952 SF Metal Warehouse

FLOOD ZONE Zone X

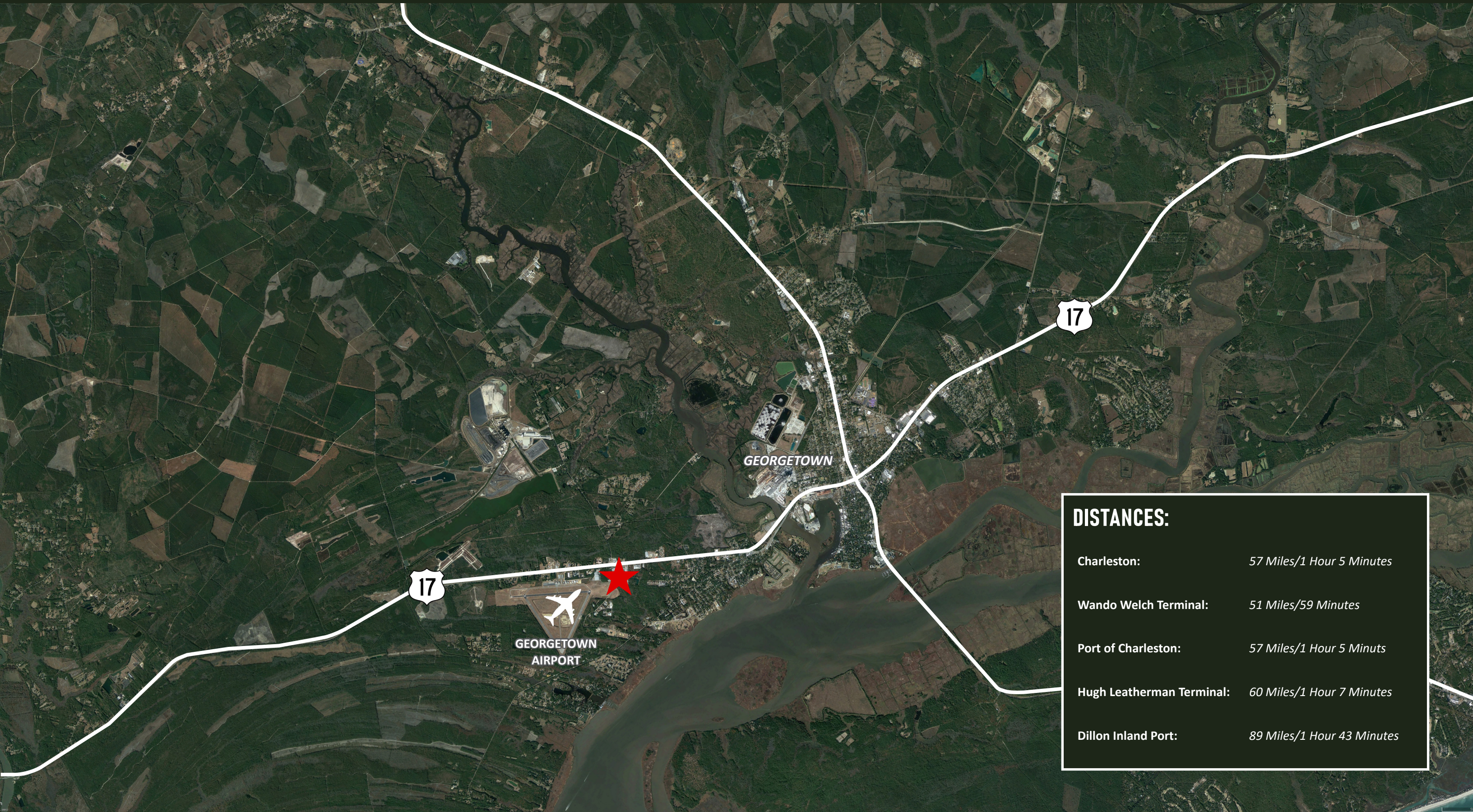
DISTANCE TO I-95 56 Miles



INTERIOR/EXTERIOR PHOTOS



OVERVIEW MAP



DISTANCES:

Charleston:	57 Miles/1 Hour 5 Minutes
Wando Welch Terminal:	51 Miles/59 Minutes
Port of Charleston:	57 Miles/1 Hour 5 Minutes
Hugh Leatherman Terminal:	60 Miles/1 Hour 7 Minutes
Dillon Inland Port:	89 Miles/1 Hour 43 Minutes



SITE & BUILDING AVAILABLE FOR SALE/LEASEBACK

225 INDUSTRIAL DR

GEORGETOWN, SOUTH CAROLINA

FOR MORE INFORMATION:

HAGOOD MORRISON SIOR, MBA, CRE
Executive Vice President
+1 843 270 5219

HAGOOD S. MORRISON (HAGOOD II) SIOR
Senior Vice President
+1 843 830 9108

