

138 N Meramec Ave

Clayton, MO 63105

4,435 SF OFFICE FOR SALE OR LEASE

- Rare Stand Alone Building Located in Downtown Clayton
- 8 Designated Parking Spaces On-Site
- Recently Renovated & High-End Finishes Throughout
- Fully Finished Lower-Level with Walk-Out
- Private Green Space in Rear of Property
- Lease Rate: \$28.00 PSF, NNN
- Sale Price: \$1,700,000

FOR MORE INFORMATION CONTACT:

Dan Freeland, CCIM, SIOR | (314) 889-0605
dfreeland@gershmancre.com

Jim Loft, CCIM, SIOR | (314) 696-1400
jloft@gershmancre.com

Fallon Chambers | (314) 746-1425
fchambers@gershmancre.com

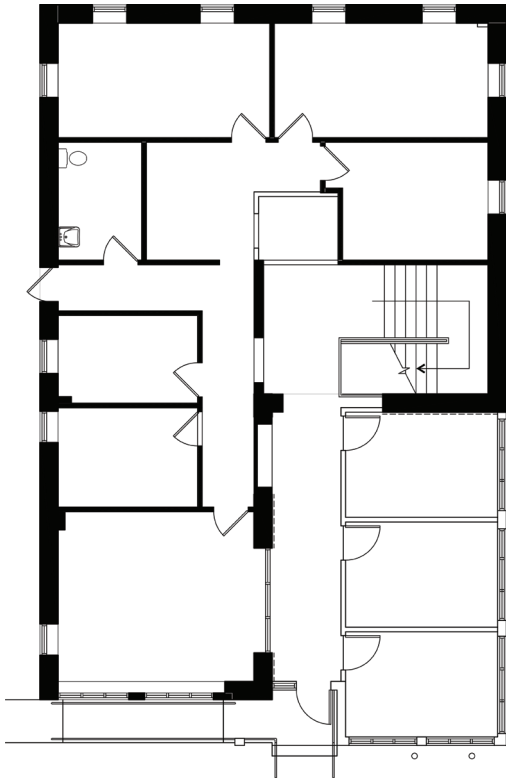


GERSHMANCRE.COM

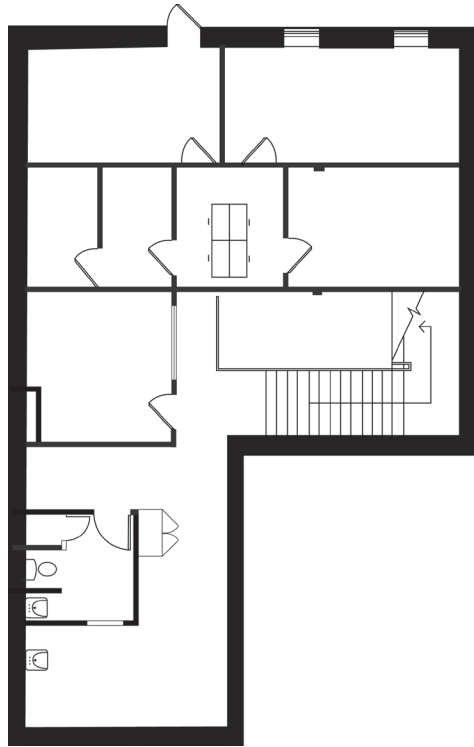




138 N Meramec Ave



First Floor



Lower Level



The information contained herein is not warranted, although it has been obtained from the owner of the property or from other sources we deem reliable. It is subject to change without notice. Owner and broker make no representation as to the environmental condition of the property and recommend purchaser's/tenant's independent investigation.