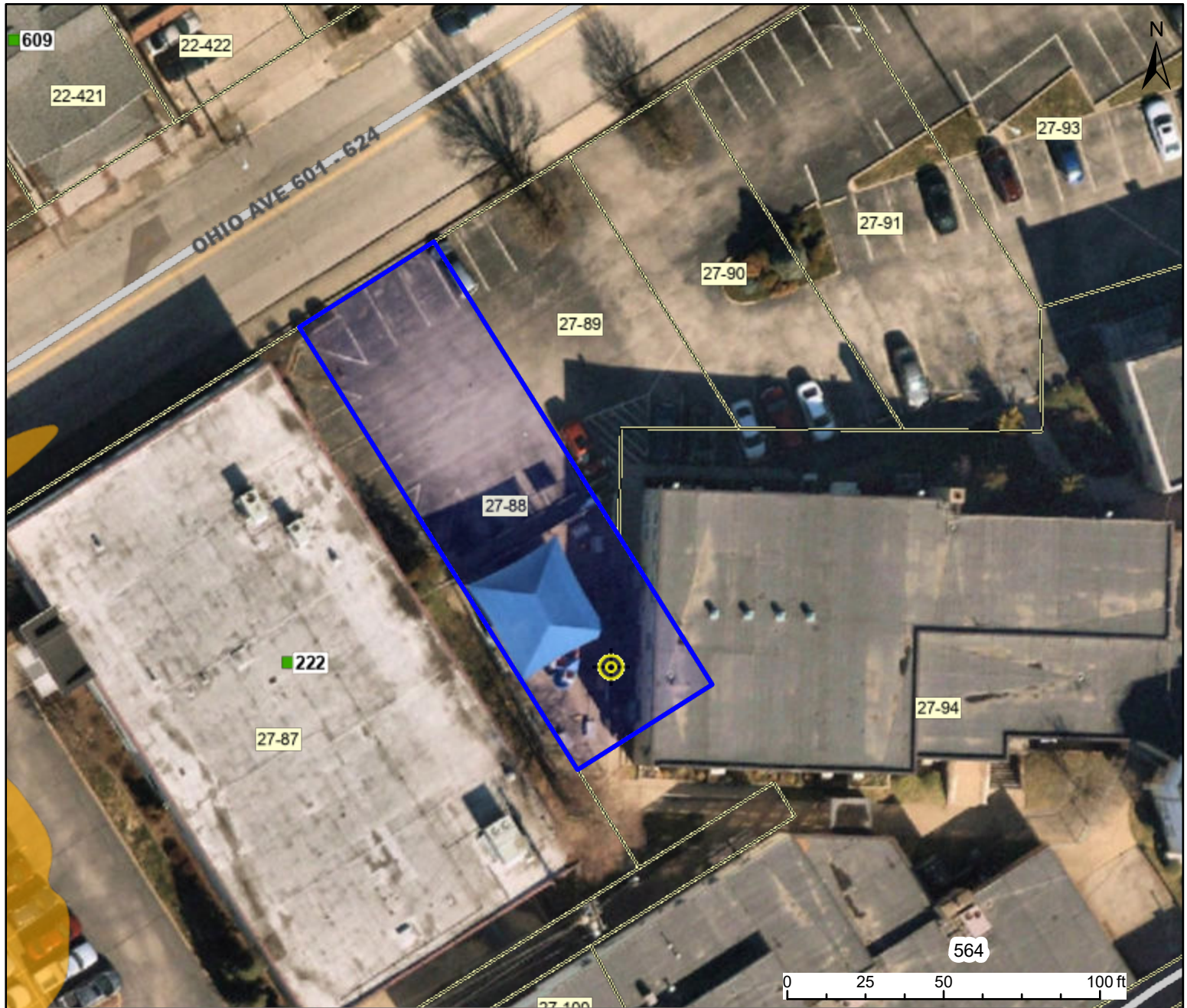




WV Flood Map 27 Parcel 88



This map is not the official regulatory FIRM or DFIRM. Its purpose is to assist with determining potential flood risk for the selected location.

<div><div><div>H I G H</div><div></div><div>Regulatory Floodway</div></div><div><div><div>Zone AE</div></div><div>1-Percent-Annual-Chance Flood Hazard Area With Base Flood Elevation (BFE)</div></div><div><div><div>Zone A</div></div><div>1-Percent-Annual-Chance Flood Hazard Area Without BFE (may have Advisory Flood Heights)</div></div><div><div><div>Advisory</div></div><div>1-Percent-Annual-Chance Future Conditions (High Risk Advisory Flood Zones)</div></div></div>		<div><div> Flood Info Location</div><div>Map created on 7/17/2025</div></div>	
<div>Download the Full Legend for all flood tool symbols https://www.mappw.gov/flood/map/docs/wv_flood_tool_legend.pdf</div>		<div>User Notes</div>	
<div>Disclaimer:</div> <div>The online map is for use in administering the National Flood Insurance Program. It does not necessarily identify all areas subject to flooding, particularly from local drainage sources of small size. Refer to the official Flood Insurance Study (FIS) for detailed flood elevation data in flood profiles and data tables. WV Flood Tool (https://www.MapWV.gov/flood) is supported by FEMA, WV NFIP Office, and WV GIS Technical Center.</div>		<div>Flood Hazard Area</div>	<div>Location is WITHIN a moderate flood risk hazard such as a FEMA 500-year floodplain.</div>
		<div>Flood Zone</div>	<div>Shaded X (500-YR Flood)</div>
		<div>Stream</div>	<div>Kanawha River</div>
		<div>Watershed (HUC8)</div>	<div>Lower Kanawha (5050008)</div>
		<div>Flood Height</div>	<div>601.3 ft (Source: FEMA 2018-20) (NAVD88)</div>
		<div>Water Depth</div>	
		<div>Elevation</div>	
		<div>Community & ID</div>	
		<div>FEMA Map & Date</div>	<div>City of Charleston (ID: 540073) 54039C0407E; Effective Date: 2/6/2008</div>
		<div>Location (lat, long)</div>	<div>(38.361532, -81.642340) (WGS84)</div>
		<div>Parcel ID</div>	<div>20-12-0027-0088-0000</div>
		<div>E-911 Address</div>	