

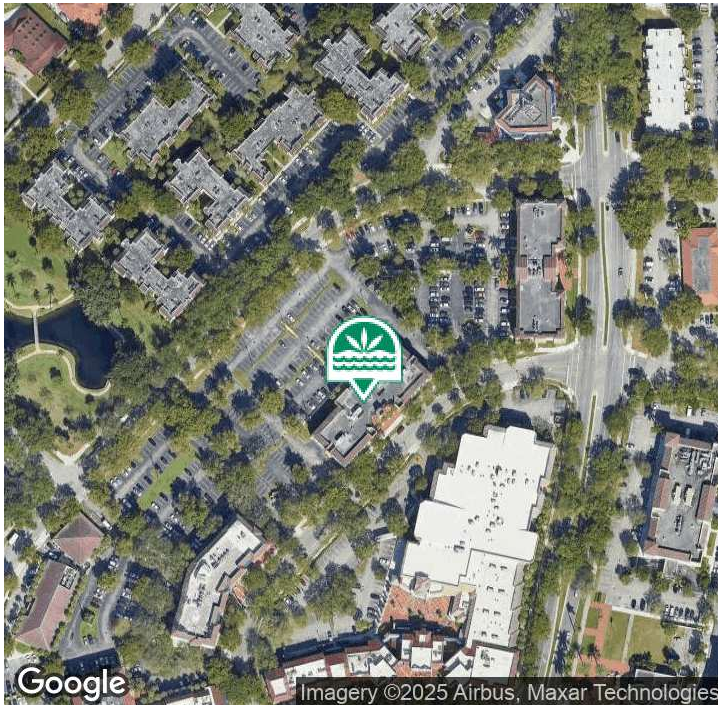
Office Space For Lease

## Laurel Court Office Building

15500 New Barn Road  
Miami Lakes, FL 33014



### SUITE 200



#### PROPERTY DESCRIPTION

Laurel Court is situated in Miami Lakes Town Center, the social hub for Miami Lakes and the surrounding community. Adjacent to Main Street and Miami Lakes Hotel on Main, this two-story multi tenant office building offers an ideal workplace environment. Parking is available at 4/1000 SF at no charge

#### PROPERTY HIGHLIGHTS

- Adjacent to 67th Avenue/Ludlam Rd. with immediate access to SR-826 and I-75; Close to I-95 and the FL Turnpike
- Walking distance to a variety of restaurants, retail shops, apartments, and offices as well as the Miami Lakes Hotel on Main and Miami Lakes Athletic Club

#### OFFERING SUMMARY

Lease Rate:	\$23.00 SF/yr (NNN)
CAM/Taxes:	\$12.51 / \$2.66
Available Space:	4,071 SF
Building Size:	29,872 SF

For More Information Contact:

**Philip Wyllie**

Director of Leasing

954.257.7953

[philipw@grahamcos.com](mailto:philipw@grahamcos.com)

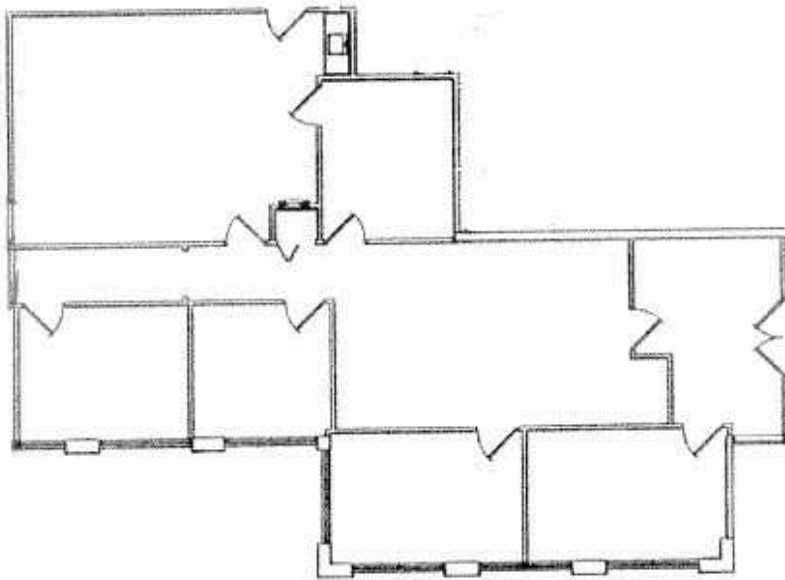
Office Space For Lease

## Laurel Court Office Building

15500 New Barn Road  
Miami Lakes, FL 33014



### SUITE 200 FLOOR PLAN



Floor Plan



**Laurel Court**  
Suite 100

**2,084 RSF**

**The Graham Companies**  
6843 Main Street  
Miami Lakes, FL 33014

For More Information Contact:

**Philip Wyllie**

Director of Leasing

954.257.7953

[philipw@grahamcos.com](mailto:philipw@grahamcos.com)



Office Space For Lease

## Laurel Court Office Building

15500 New Barn Road  
Miami Lakes, FL 33014



### ADDITIONAL PHOTOS



For More Information Contact:

**Philip Wyllie**

Director of Leasing

954.257.7953

[philipw@grahamcos.com](mailto:philipw@grahamcos.com)



Office Space For Lease

## Laurel Court Office Building

15500 New Barn Road  
Miami Lakes, FL 33014



## TOWN CENTER RETAIL MAP



For More Information Contact:

**Philip Wyllie**

Director of Leasing

954.257.7953

philipw@grahamcos.com