



1837 NW 20 ST
MIAMI FL 33142
2,755 SQFT RENOVATED RETAIL SPACE

Open your business on Miami's vibrant Nw 20th ST Allapattah. This retail building in the heart of Allapattah offers a freestanding 2,755sf building with parking, well suited for a multitude of uses such as retail store, medical, lounge, office, etc. Site is located in Allapattah, a bustling neighborhood with a strong business community and employment, a great local working population, and quick access to urban core neighborhoods such as downtown, Brickell, etc; other important hubs such as the airport, civic center, and more; as well as quick access to major highways such as I-95, 826/Dolphin Expressway, and more.

LEASE PRICE: \$7,500 Monthly

Building Size: 2,755 Sqft

- 20,000 Daily Traffic Count
- 6+ Parking Spaces
- Signage Available



ALESSANDRO LIMA
C: 305.281.4469
E: AML@FAUSTOCOMMERCIAL.COM



1841 NW 20 ST
MIAMI FL 33142
1,500 SQFT RENOVATED RETAIL SPACE

Open your business on Miami's vibrant Nw 20th ST Allapattah. This retail building in the heart of Allapattah offers a freestanding 1,500sf building with parking, well suited for a multitude of uses such as retail store, medical, lounge, office, etc. Site is located in Allapattah, a bustling neighborhood with a strong business community and employment, a great local working population, and quick access to urban core neighborhoods such as downtown, Brickell, etc; other important hubs such as the airport, civic center, and more; as well as quick access to major highways such as I-95, 826/Dolphin Expressway, and more.



LEASE PRICE: \$4,500 Monthly

Building Size: 1,500 Sq Ft

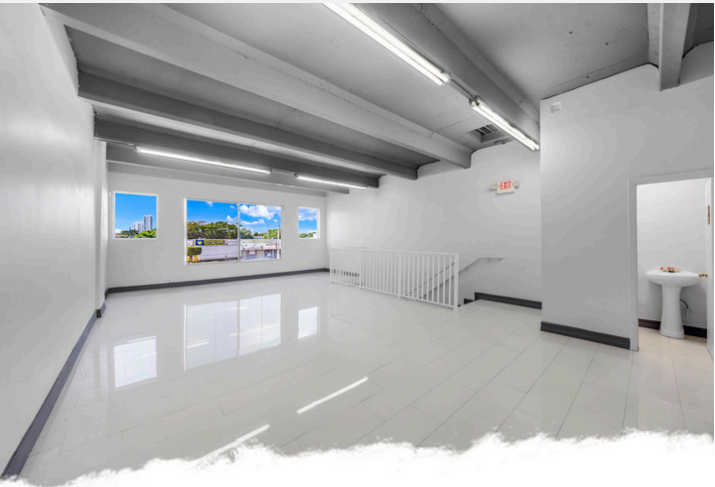
- 20,000 Daily Traffic Count
- 6+ Parking Spaces
- Signage Available



ALESSANDRO LIMA
C: 305.281.4469
E: AML@FAUSTOCOMMERCIAL.COM



VISIT FAUSTOCOMMERCIAL.COM
1761 W FLAGLER ST, MIAMI, 33135

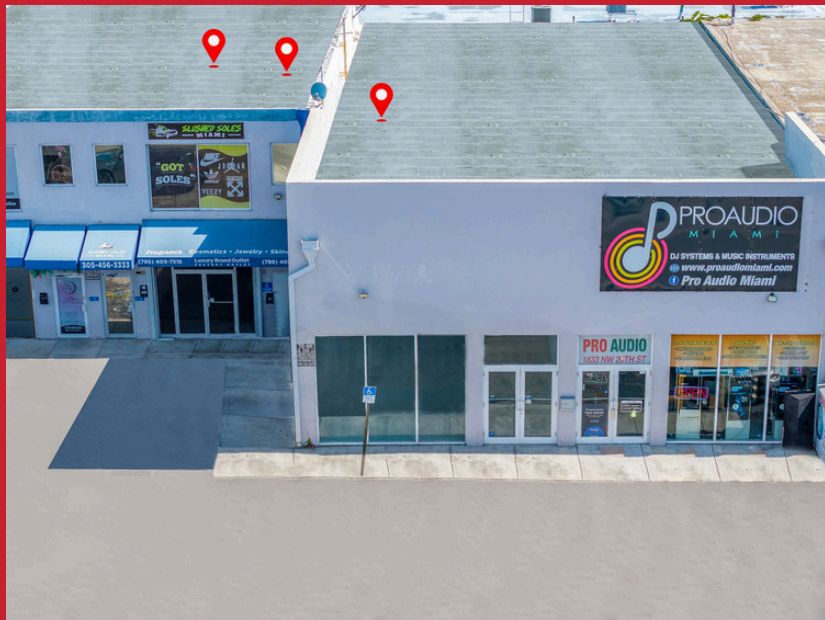


**1847 NW 20 ST
MIAMI FL 33142
1,350 SQFT RENOVATED RETAIL SPACE**

Open your business on Miami’s vibrant Nw 20th ST Allapattah. This retail building in the heart of Allapattah offers a freestanding 1,350sf building with parking, well suited for a multitude of uses such as retail store, medical, lounge, office, etc. Site is located in Allapattah, a bustling neighborhood with a strong business community and employment, a great local working population, and quick access to urban core neighborhoods such as downtown, Brickell, etc; other important hubs such as the airport, civic center, and more; as well as quick access to major highways such as I-95, 826/Dolphin Expressway, and more.

LEASE PRICE: \$3,600 Monthly
Building Size: 1,350 Sq Ft

- 20,000 Daily Traffic Count
- 6+ Parking Spaces
- Signage Available
- Unit Located in 2nd Floor
- Brand New



ALESSANDRO LIMA
C: 305.281.4469
E: AML@FAUSTOCOMMERCIAL.COM