

# Bâtiment industriel idéal pour un garage

Industrial building ideal for garage



**Bâtiment industriel à vendre**

Industrial building for sale

290, rue Quinlan

LaSalle (Québec) H8R 3V6

**AVISON  
YOUNG**



# Opportunité rare sur le marché situé dans un secteur industriel

Ce bâtiment industriel de 9 193 pi<sup>2</sup>, bénéficie d'une localisation centrale, à proximité immédiate de la Route 138.

Rare opportunity on the market located in an industrial area

This 9,193 sf industrial building benefits from a central location, in close proximity to Route 138.



**Superficie rare pour  
ce type d'espace**  
Rare area for this type  
of space



**Potentiel de plus-value lors  
d'un développement futur**  
Potential for upside on future  
development



Façade | Facade



Vue aérienne | Aerial view

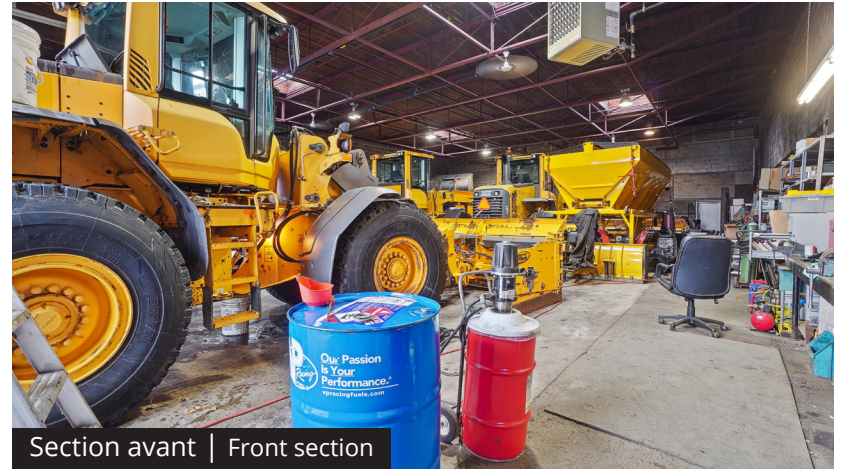


Expédition | Shipping





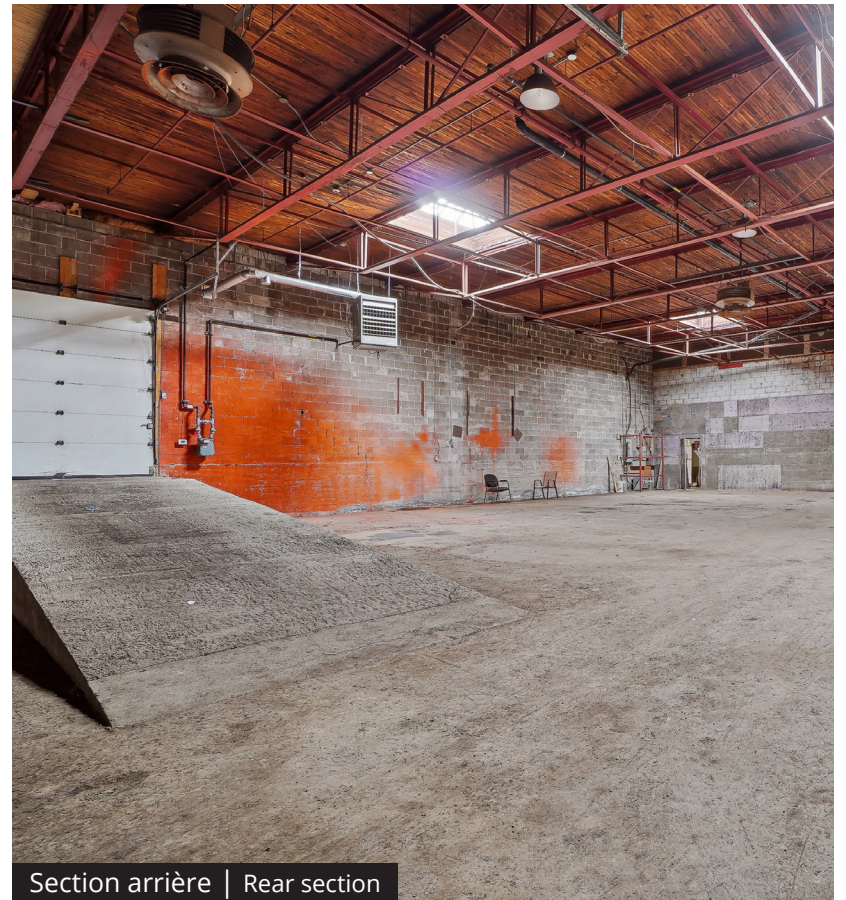
Section arrière | Rear section



Section avant | Front section



Section avant | Front section













Section arrière | Rear section

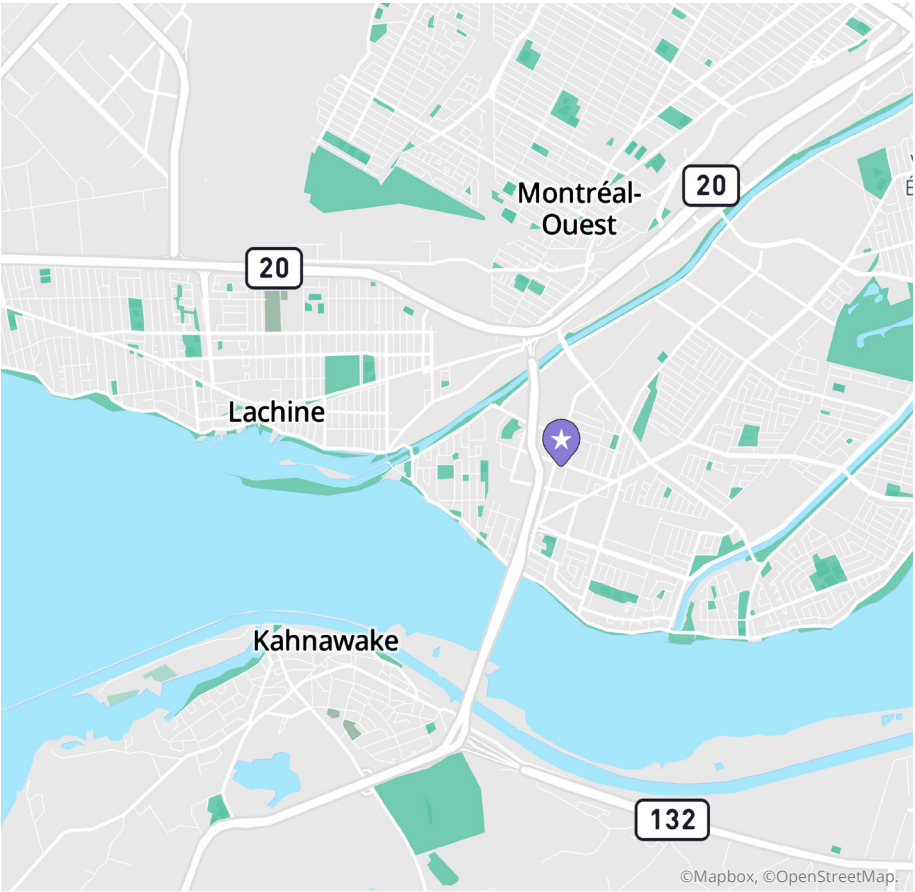


# Détails de la vente

Sale details



	<b>Superficie du bâtiment (pi²)</b> Total building space (sf)	9 193
	<b>Superficie du terrain (pi²)</b> Land area (sf)	14 878
	<b>Année de construction</b> Year built	1946
	<b>1 quai de chargement</b> 1 truck level door	(12' x 8')
	<b>3 portes au sol</b> 3 drive-in doors	(14' x 8')
	<b>Prix demandé</b> Asking price	2 600 000 \$ (283,82 \$ / pi²) \$2,600,000 (\$283.82 psf)

	<b>Superficie section avant (pi²)</b> Front section space (sf)	4 500
	<b>Terme du bail section avant</b> End of lease, front section	31 octobre 2025 October 31 <sup>st</sup> , 2025
	<b>Superficie section arrière (pi²)</b> Rear section space (sf)	4 623
	<b>Terme du bail section arrière</b> End of lease, rear section	31 août 2025 August 31 <sup>st</sup> , 2025



# Désignation et zonage




Designation and zoning

	<b>Numéro de lot (Cadastre du Québec)</b> Lot number	2 331 558
	<b>Zonage</b> Zoning	108-16



# La propriété constitue un immeuble rare sur le marché

## Évaluation municipale Municipal assessment

	Terrain (2026-2028) Land	456 200 \$
	Bâtiment (2026-2028) Building	341 600 \$
	Total	797 800 \$

## Taxes Taxes

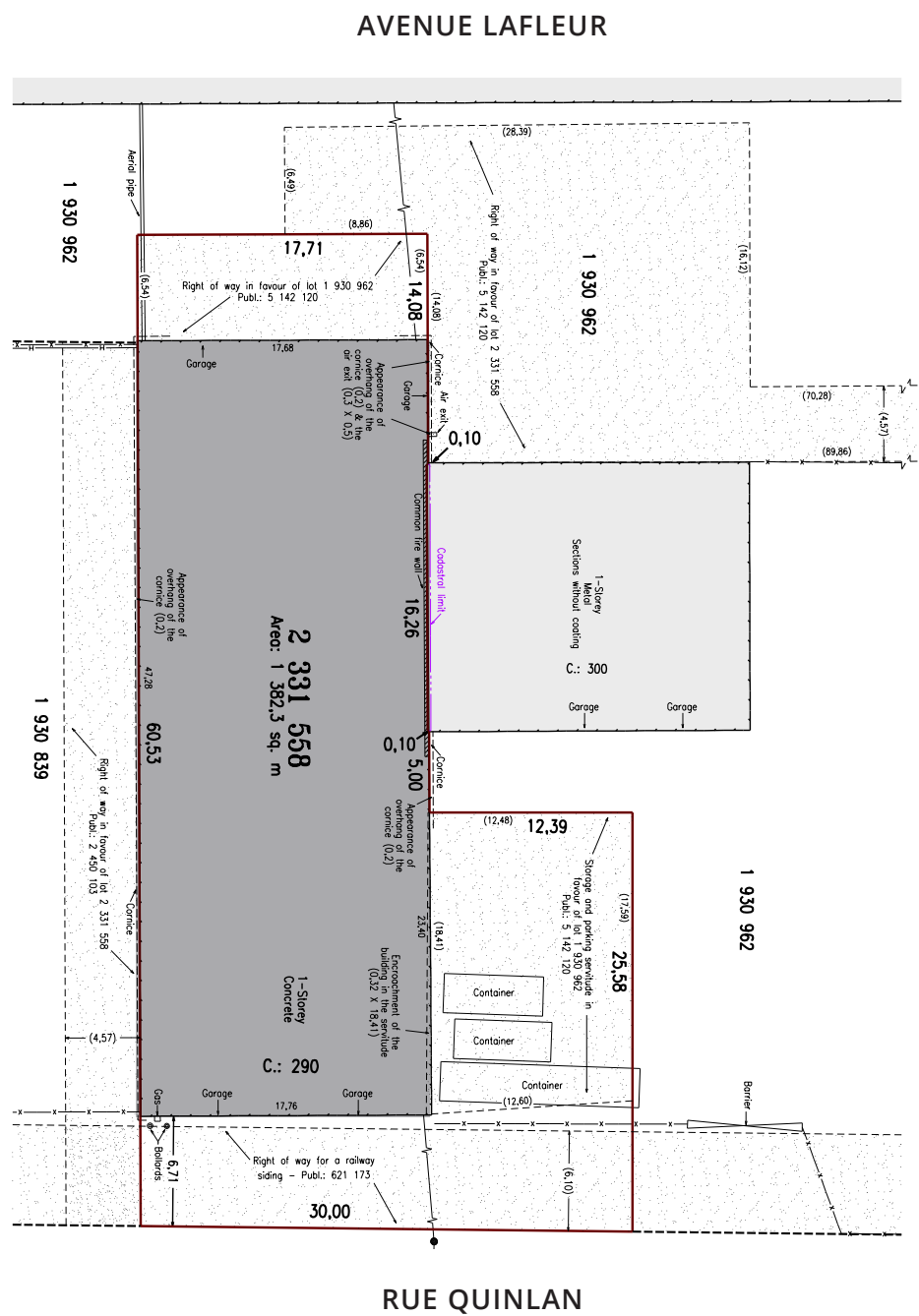
Municipales (2025) Municipal	10 545 \$
Scolaires (2025-2026) School	332 \$
Total	10 877 \$





## Plan au certificat de localisation

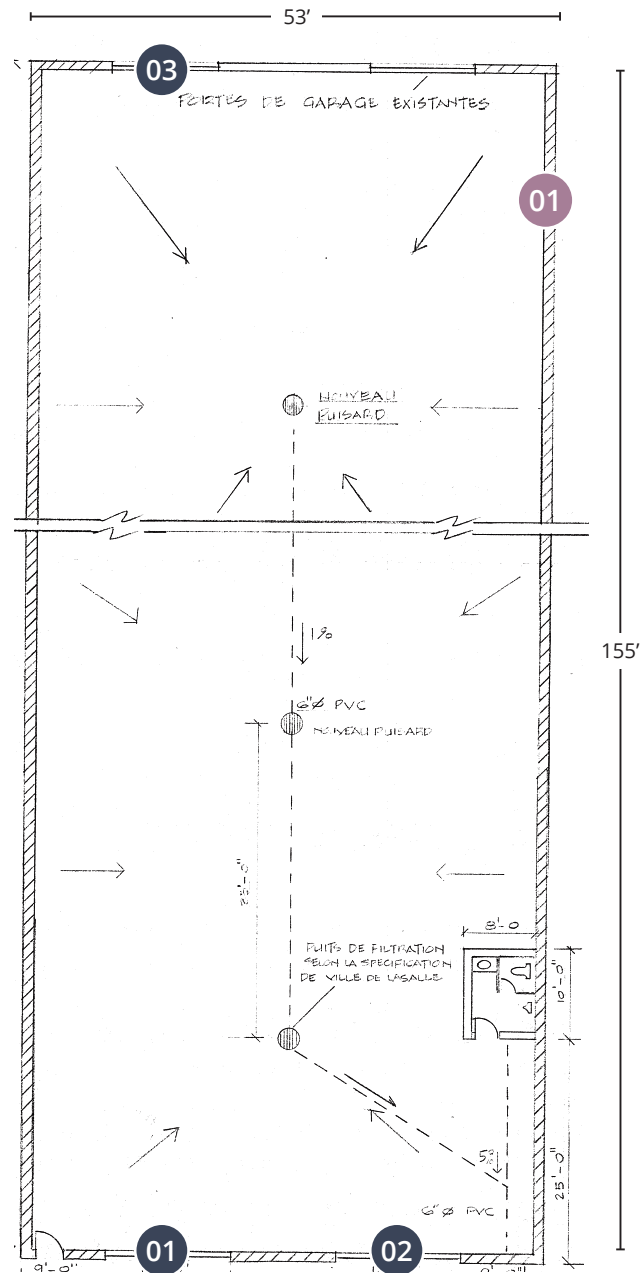
### Survey plan



RUE JEAN-MILOT



Plan de la propriété  
Property plan



- Quai(s) de chargement  
Loading dock(s)
- Porte(s) au sol  
Drive-in door(s)

RUE QUINLAN





**Contactez-nous pour plus de détails.**  
Contact us for more information.

**Shlomo Benarroch<sup>1</sup>**

Associé, Vice-président principal,  
Courtier immobilier  
**C** +1 514 497 1058  
**D** +1 514 392 9477  
shlomo.benarroch@avisonyoung.com

<sup>1</sup>Immobilier Shlomo Benarroch inc.

**Gabrielle Saine<sup>2</sup> CCIM, SIOR ®**

Associée, Vice-présidente principale,  
Courtier immobilier  
**C** +1 514 603 0062  
**D** +1 514 392 9470  
gabrielle.saine@avisonyoung.com

<sup>2</sup>Immobilier Gabrielle Saine inc.

**Avison Young**

1801 avenue McGill College,  
Bureau 500  
Montréal (Québec) H3A 2N4  
+1 514 392 1330

**Visitez-nous en ligne**  
**avisonyoung.ca**