

EXECUTIVE OFFICE IN DOWNTOWN NAPA

1030 SEMINARY STREET , NAPA, CA 94559

PROPERTY SUMMARY



PROPERTY DESCRIPTION

One private office with shared use of conference room, kitchenette, and bathrooms, totaling at 525 of rentable. Utilities are included with the exception of garbage, telecommunications, internet and janitorial.

LOCATION DESCRIPTION

Discover a prime location on Seminary Street, settled between Clay and First Streets—just minutes away from the Napa County Court House, Administration Offices, and directly across from the Napa Planning Department. Ideal users include legal professional, consultant, or entrepreneur.

This location offers high visibility and easy access in one of Napa's most sought-after business districts. Enjoy the convenience of being in the center of it all, with restaurants, shops, and key businesses all within walking distance.

OFFERING SUMMARY

Lease Rate:	\$1,750.00 per month (Full Service)
Available SF:	525 SF
Building Size:	2,000 SF

DEMOGRAPHICS	0.25 MILES	0.5 MILES	1 MILE
Total Households	443	1,950	7,226
Total Population	829	4,544	18,199
Average HH Income	\$62,651	\$86,216	\$92,276



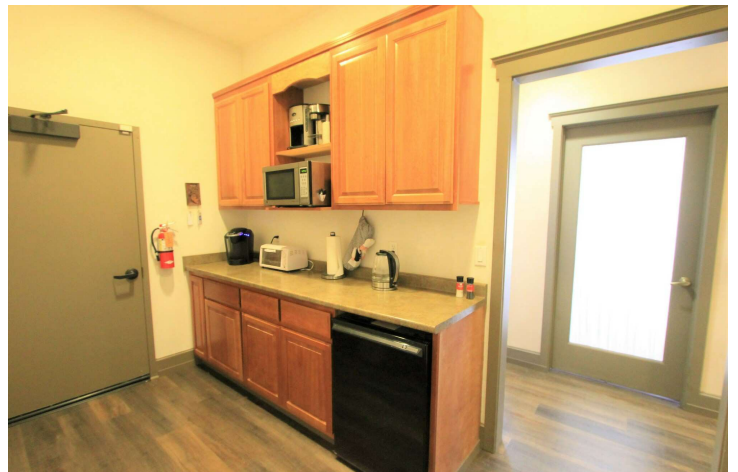
MICHAEL HOLCOMB
707.294.2944
MHOLCOMB@WREALESTATE.NET
CALDRE #01458995

The above information, while not guaranteed, has been secured from sources we believe to be reliable. Submitted subject to error, change or withdrawal. An interested party should verify the status of the property and the information herein.

EXECUTIVE OFFICE IN DOWNTOWN NAPA

1030 SEMINARY STREET , NAPA, CA 94559

ADDITIONAL PHOTOS



MICHAEL HOLCOMB

707.294.2944

MHOLCOMB@WREALESTATE.NET

CALDRE #01458995

The above information, while not guaranteed, has been secured from sources we believe to be reliable. Submitted subject to error, change or withdrawal. An interested party should verify the status of the property and the information herein.