



Keegan & Coppin
COMPANY, INC.

FOR LEASE

2425 CLEVELAND AVENUE
SANTA ROSA, CA

OFFICE SPACE FOR LEASE



Go beyond broker.

REPRESENTED BY:

DOUGLASS A. BRAIK,
SENIOR REAL ESTATE ADVISOR
LIC # 00544642 (707) 528-1400, EXT 245
DBRAIK@KEEGANCOPPIN.COM



Keegan & Coppin
COMPANY, INC.



2425 CLEVELAND AVENUE
SANTA ROSA, CA

**OFFICE SPACE
FOR LEASE**

PROPERTY DETAILS

- Very Clean, Neat and Bright
- Close to All Amenities
- Common area, Kitchen, Large Conference Room
- Excellent Parking

LEASE RATE

SUITE 175: 1,816+/- RSF - \$3,178/Mo Including Utilities (\$1.75 PSF)

SUITE 220: 300+/- RSF - \$560/Mo Including Utilities (\$1.87 PSF)

LEASE TERMS

Very friendly and flexible. 1 to 5 years.

USER SPACE

Office

ZONING

CO/Office

TOTAL BUILDING S.F.

9,822+/- sf

PARKING

Ample On-Site

DESCRIPTION OF PREMISES - FEATURES

Common area features large full conference room, full kitchen on 2nd floor. Beautiful newly remodeled, fresh paint and laminate flooring.

#125: Multi-office with custom barnwood & patio sliders

#175: Front location open with 2 offices.

DESCRIPTION OF LOCATION - AREA

Across from TJMaxx, and next to Big 5 - close to Coddington Shopping Center.



PRESENTED BY: DOUGLASS A. BRAIK, SENIOR REAL ESTATE ADVISOR
LIC # 00544642 (707) 528-1400, EXT 245
DBRAIK@KEEGANCOPPIN.COM

The above information, while not guaranteed, has been secured from sources we believe to be reliable. Submitted subject to error, change or withdrawal. An interested party should verify the status of the property and the information herein.



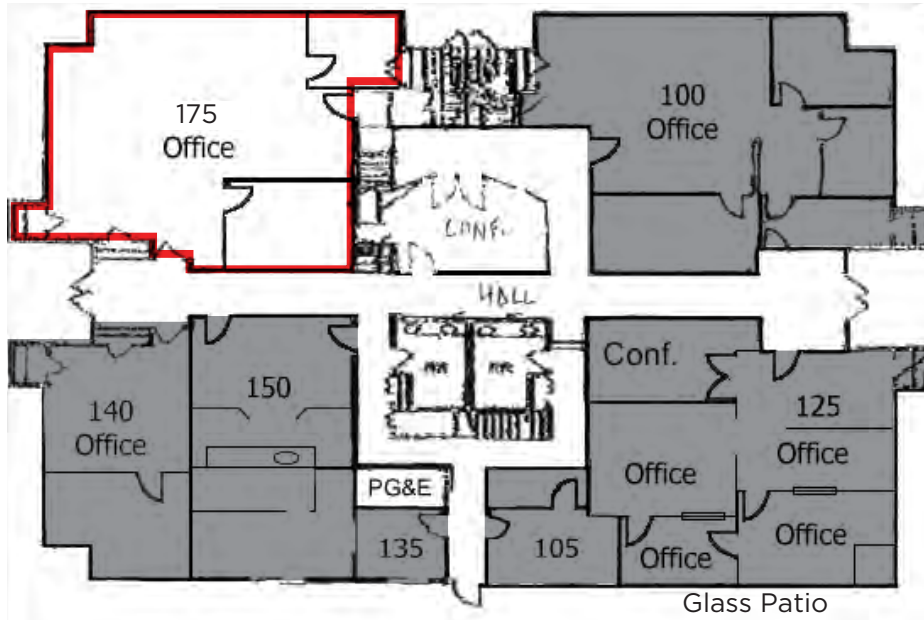
Keegan & Coppin
COMPANY, INC.



2425 CLEVELAND AVENUE
SANTA ROSA, CA

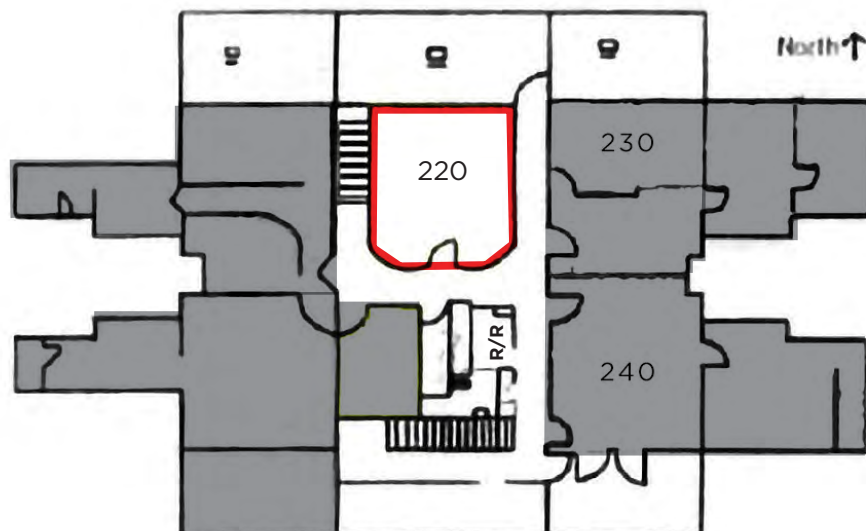
**OFFICE SPACE
FOR LEASE**

FLOOR PLAN



First Floor Plan
(Not to Scale)

- ☐ AVAILABLE
☒ NOT AVAILABLE



PRESENTED BY: DOUGLASS A. BRAIK, SENIOR REAL ESTATE ADVISOR
LIC # 00544642 (707) 528-1400, EXT 245
DBRAIK@KEEGANCOPPIN.COM

The above information, while not guaranteed, has been secured from sources we believe to be reliable. Submitted subject to error, change or withdrawal. An interested party should verify the status of the property and the information herein.



Keegan & Coppin
COMPANY, INC.



2425 CLEVELAND AVENUE
SANTA ROSA, CA

**OFFICE SPACE
FOR LEASE**

PROPERTY PHOTOS



CONFERENCE ROOM



SUITE 240



COMMON KITCHEN



PRESENTED BY: DOUGLASS A. BRAIK, SENIOR REAL ESTATE ADVISOR
LIC # 00544642 (707) 528-1400, EXT 245
DBRAIK@KEEGANCOPPIN.COM

The above information, while not guaranteed, has been secured from sources we believe to be reliable. Submitted subject to error, change or withdrawal. An interested party should verify the status of the property and the information herein.



Keegan & Coppin
COMPANY, INC.



2425 CLEVELAND AVENUE
SANTA ROSA, CA

OFFICE SPACE
FOR LEASE

VICINITY AERIAL



PRESENTED BY: DOUGLASS A. BRAIK, SENIOR REAL ESTATE ADVISOR
LIC # 00544642 (707) 528-1400, EXT 245
DBRAIK@KEEGANCOPPIN.COM

The above information, while not guaranteed, has been secured from sources we believe to be reliable. Submitted subject to error, change or withdrawal. An interested party should verify the status of the property and the information herein.



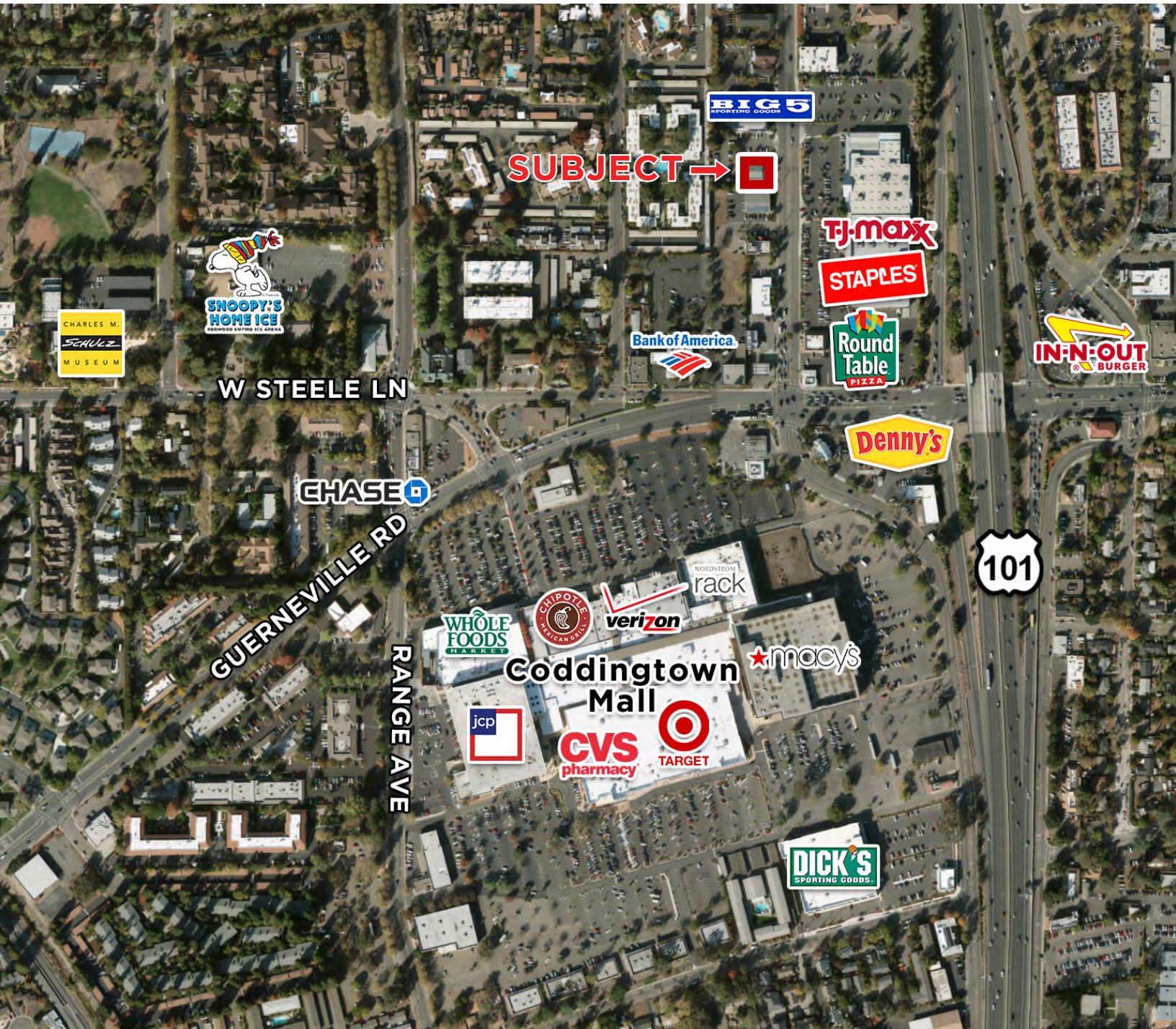
Keegan & Coppin
COMPANY, INC.



2425 CLEVELAND AVENUE
SANTA ROSA, CA

OFFICE SPACE
FOR LEASE

VICINITY AERIAL



PRESENTED BY:

DOUGLASS A. BRAIK, SENIOR REAL ESTATE ADVISOR
LIC # 00544642 (707) 528-1400, EXT 245
DBRAIK@KEEGANCOPPIN.COM

The above information, while not guaranteed, has been secured from sources we believe to be reliable. Submitted subject to error, change or withdrawal. An interested party should verify the status of the property and the information herein.