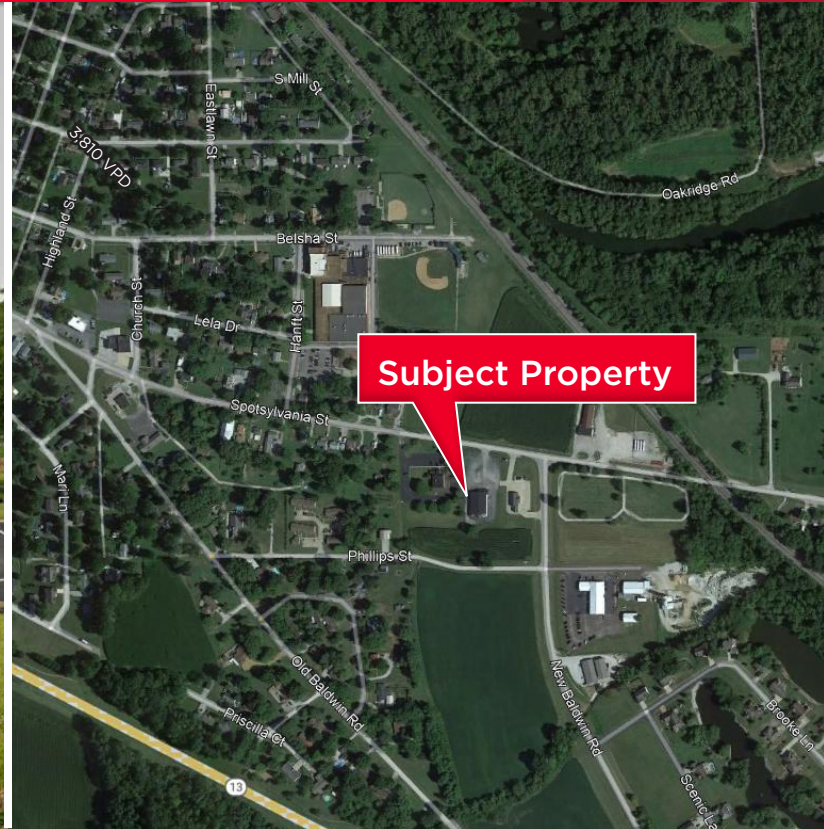




FOR SALE

1100 Spotsylvania Street

New Athens, IL 62264



Former Bank Branch | 1100 Spotsylvania St

Asking Price: \$250,000

- Single story bank branch
- Building SF: 5,625 SF
- Lot Size: 4.58 Acres
- Zoning: Commercial

Contact Broker for additional info:

Kyle Pershing

+1 314 236 5471

kyle.pershing@cushwake.com

Demographics

	1 Mile	3 Mile	5 Mile
Population	1,992	2,551	3,762
AVG. HH Income	\$88,083	\$88,605	\$88,486
Households	829	1,027	1,527

7700 Forsyth Boulevard, Suite 1210
 St. Louis, MO 63105
 main +1 314 862 7100
 fax +1 314 862 1648
cushmanwakefield.com

©2024 Cushman & Wakefield. All rights reserved. The information contained in this communication is strictly confidential. This information has been obtained from sources believed to be reliable but has not been verified. NO WARRANTY OR REPRESENTATION, EXPRESS OR IMPLIED, IS MADE AS TO THE CONDITION OF THE PROPERTY (OR PROPERTIES) REFERENCED HEREIN OR AS TO THE ACCURACY OR COMPLETENESS OF THE INFORMATION CONTAINED HEREIN, AND SAME IS SUBMITTED SUBJECT TO ERRORS, OMISSIONS, CHANGE OF PRICE, RENTAL OR OTHER CONDITIONS, WITHDRAWAL WITHOUT NOTICE, AND TO ANY SPECIAL LISTING CONDITIONS IMPOSED BY THE PROPERTY OWNER(S). ANY PROJECTIONS, OPINIONS OR ESTIMATES ARE SUBJECT TO UNCERTAINTY AND DO NOT SIGNIFY CURRENT OR FUTURE PROPERTY PERFORMANCE.