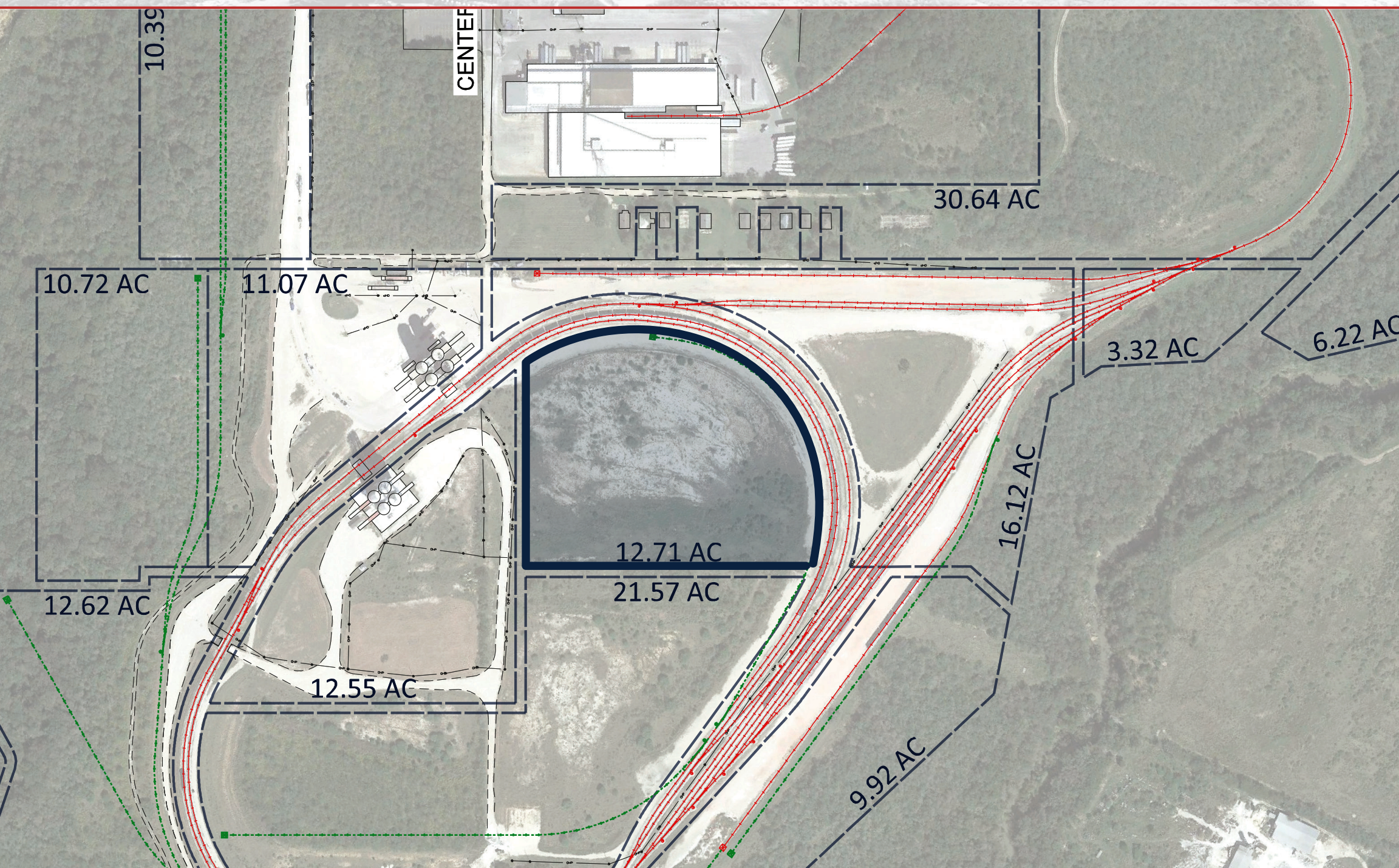




**BUILD READY  
12.71 ACRE SITE**  
(FOR LEASE, D/B OR BUILD-TO-SUIT)



**12070 CENTRAL RD, SAN ANTONIO, TX 78223**  
**USRL SAN ANTONIO**

## PROPERTY DETAILS

- 12.71 Acres
- San Antonio, TX
- Lots Divisible
- Platted Lots Available

## DEVELOPMENT INFO

- Dual Rail Service Offering Competitive Pricing (UP & BNSF)
- State-of-the-Art Rail Terminal & Transload Facility
- Easy Access via I35 and I37



**UNITED STATES  
RAIL & LOGISTICS**

Leading the way in  
Transloading, Rail Services,  
and Facilities Management.