



Industrial Building for Sale

1 Industrial Plaza

PATERSON, NJ 07503

Building Size: +/- 15,000 SF on +/- 1.08 acres

Sale Price: Call for Pricing

Location: In close proximity to Routes 19, 80, 46, 3, the Garden State Parkway and the NJ Turnpike

Features:

- Ceiling height: +/- 18' and +/- 9'
- Clear span
- Loading: 2 tailboards with levelers and 1 drive in door
- 40' x 70' freezer with 14' ceiling height
- 19' x 19' refrigerator with 9' ceiling height
- +/- 1,000 SF of office space
- Ample off street parking

Exclusive Broker

Weichert Commercial
Brokerage, Inc.

David R. Williams

Senior Vice President

201-218-0658 cell

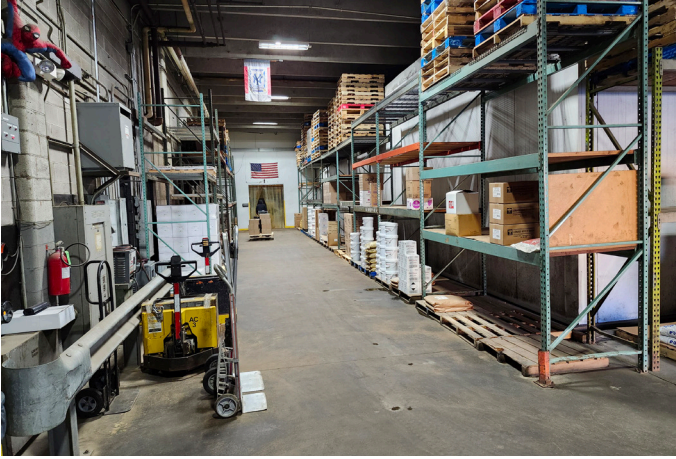
drwilliams@weichertcommercial.com

1625 Route 10 • Morris Plains, NJ • 973-267-7778 • weichertcommercial.com

No warranty or representation, express or implied is made as to the accuracy of the information contained herein, and same is submitted subject to errors, omissions, change of price, rental or other conditions, withdrawal without notice and to any special listing conditions imposed by our principals.

1 Industrial Plaza

Photos



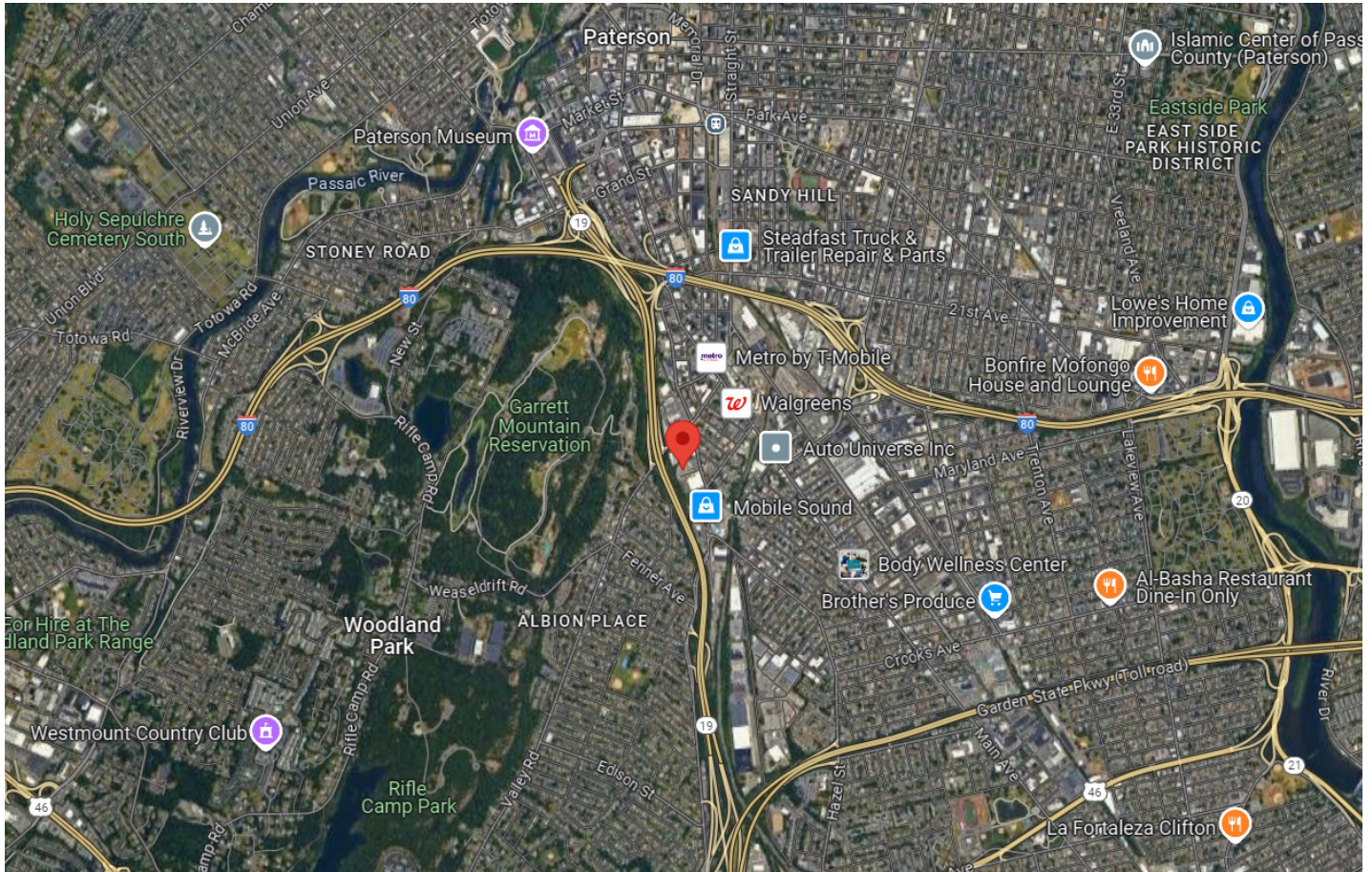
Weichert Commercial Brokerage, Inc.

1625 Route 10 • Morris Plains, NJ • 973-267-7778 • weichertcommercial.com

No warranty or representation, express or implied is made as to the accuracy of the information contained herein, and same is submitted subject to errors, omissions, change of price, rental or other conditions, withdrawal without notice and to any special listing conditions imposed by our principals.

1 Industrial Plaza

Aerial



Weichert Commercial Brokerage, Inc.

1625 Route 10 • Morris Plains, NJ • 973-267-7778 • weichertcommercial.com

No warranty or representation, express or implied is made as to the accuracy of the information contained herein, and same is submitted subject to errors, omissions, change of price, rental or other conditions, withdrawal without notice and to any special listing conditions imposed by our principals.