

COMMERCIAL LAND FOR SALE

66th & Dowden | Lubbock, TX 79407



WOLFFORTH
LAND COMPANY



\$1,400,000

Adjacent to upscale Preston Manor neighborhood

2.316 Acres

Ideal site for high-end strip center or professional office

Entitled for C-1 commercial development

\$13.88/Sq.Ft.

One block from future Loop 88 four-lane highway

Property Details

This 2.316-acre tract at 66th & Dowden has been rezoned to C-1 Commercial, offering prime potential for retail or professional development. Positioned adjacent to the upscale Preston Manor neighborhood, the site is perfectly suited for a high-end strip center, medical office, or professional building.

Just one block from the future Loop 88 four-lane limited access highway, the property will benefit from excellent access and visibility. With strong surrounding demographics and ongoing growth in the area, this location is well positioned for long-term value and success.

2% Broker Commission With Signed Agency Agreement.

Contact

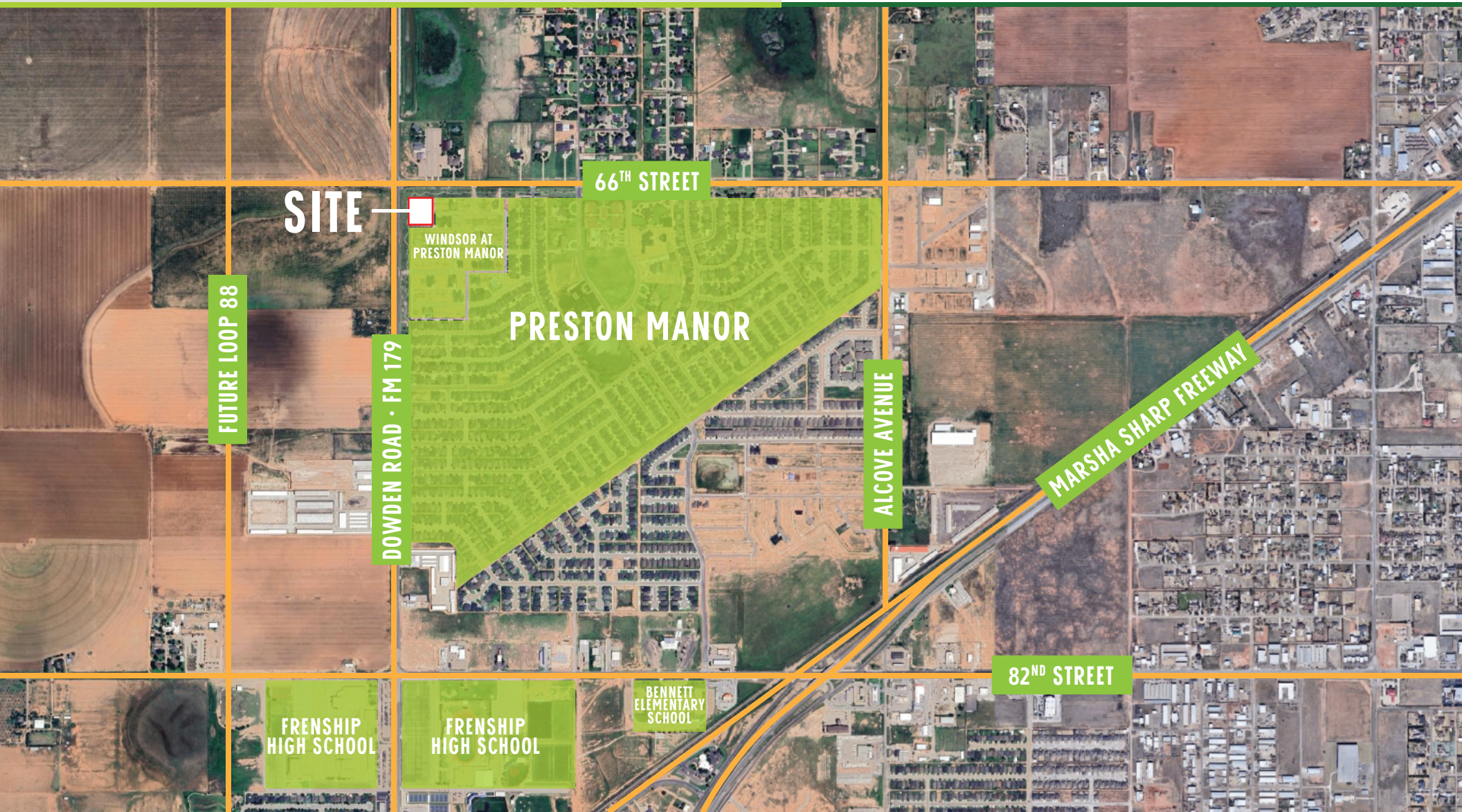
Collin Cole
972-835-8679
ccole@trekresources.com

COMMERCIAL LAND FOR SALE

66th & Dowden | Lubbock, TX 79407



WOLFFORTH
LAND COMPANY



Location Details

66th & Dowden
Lubbock, TX 79407
Adjacent to Preston Manor

Contact

Collin Cole
972-835-8679
ccole@trekresources.com

