

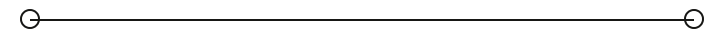


**LEASE**

## 6000 SF First Generation Industrial Facility

**830 WESCO PARKWAY**

Sheridan, IN 46069



**PRESENTED BY:**

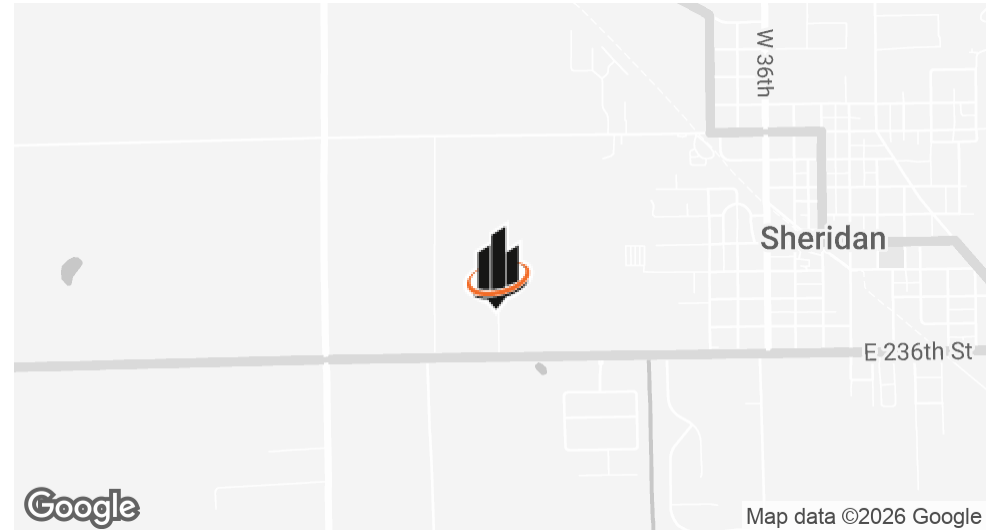
**JESS LAWHEAD, SIOR, CCIM,  
CBI**

Phone: 317.447.4403

[jess.lawhead@svn.com](mailto:jess.lawhead@svn.com)

IN #RB14047741

## PROPERTY SUMMARY



### PROPERTY DESCRIPTION

SVN | Northern Commercial is pleased to present industrial space available at 830 Wesco Parkway, Suite 200, Sheridan, IN, for lease. The space is ready for occupancy as of 5/26. The property features 6,000 SF of industrial warehouse space with 536 SF of office, a 12' x 14' overhead door, 17.2' clear height, and 25' x 40' bay spacing. The building includes 400 amps of power (120/208 V, 3-phase), a 6" concrete floor, LED lighting with motion sensors, nine parking spaces, and separately metered gas and electric.

Base rent is \$16.25/SF NNN with a 4% annual increase, and lease terms are negotiable with a minimum of seven years. A 10-year tax abatement is in place, with the building not on the tax rolls until 2027 and the first improvements tax bill in 2028 at 10%. Operating expenses start around \$1/SF in the first year and include Countryside Park CAM, land taxes initially, insurance, management fees, and exterior maintenance such as snow removal, mowing, fertilizer, and mulch. Expenses will increase as the tax abatement dissipates.

### JESS LAWHEAD, SIOR, CCIM, CBI

O: 317.447.4403  
jess.lawhead@svn.com  
IN #RB14047741

### PROPERTY HIGHLIGHTS

- 6,000 SF industrial warehouse with 536 SF office space (Ready for occupancy 5/26)
- 12' x 14' overhead door
- 17.2' clear height
- Convenient access to I-65 & US 31, near the new Eli Lilly Lebanon campus
- 10-year tax abatement in place
- 9 parking spaces included

### OFFERING SUMMARY

<b>LEASE RATE:</b>	\$16.25 SF/yr (NNN)
<b>AVAILABLE SF:</b>	6,000 SF

**PROGRESS PHOTOS**



**JESS LAWHEAD, SIOR, CCIM, CBI**  
O: 317.447.4403  
jess.lawhead@svn.com  
IN #RB14047741

# OFFICE



**JESS LAWHEAD, SIOR, CCIM, CBI**  
O: 317.447.4403  
jess.lawhead@svn.com  
IN #RB14047741

**WAREHOUSE**



**JESS LAWHEAD, SIOR, CCIM, CBI**  
O: 317.447.4403  
jess.lawhead@svn.com  
IN #RB14047741

**ADDITIONAL PHOTOS**



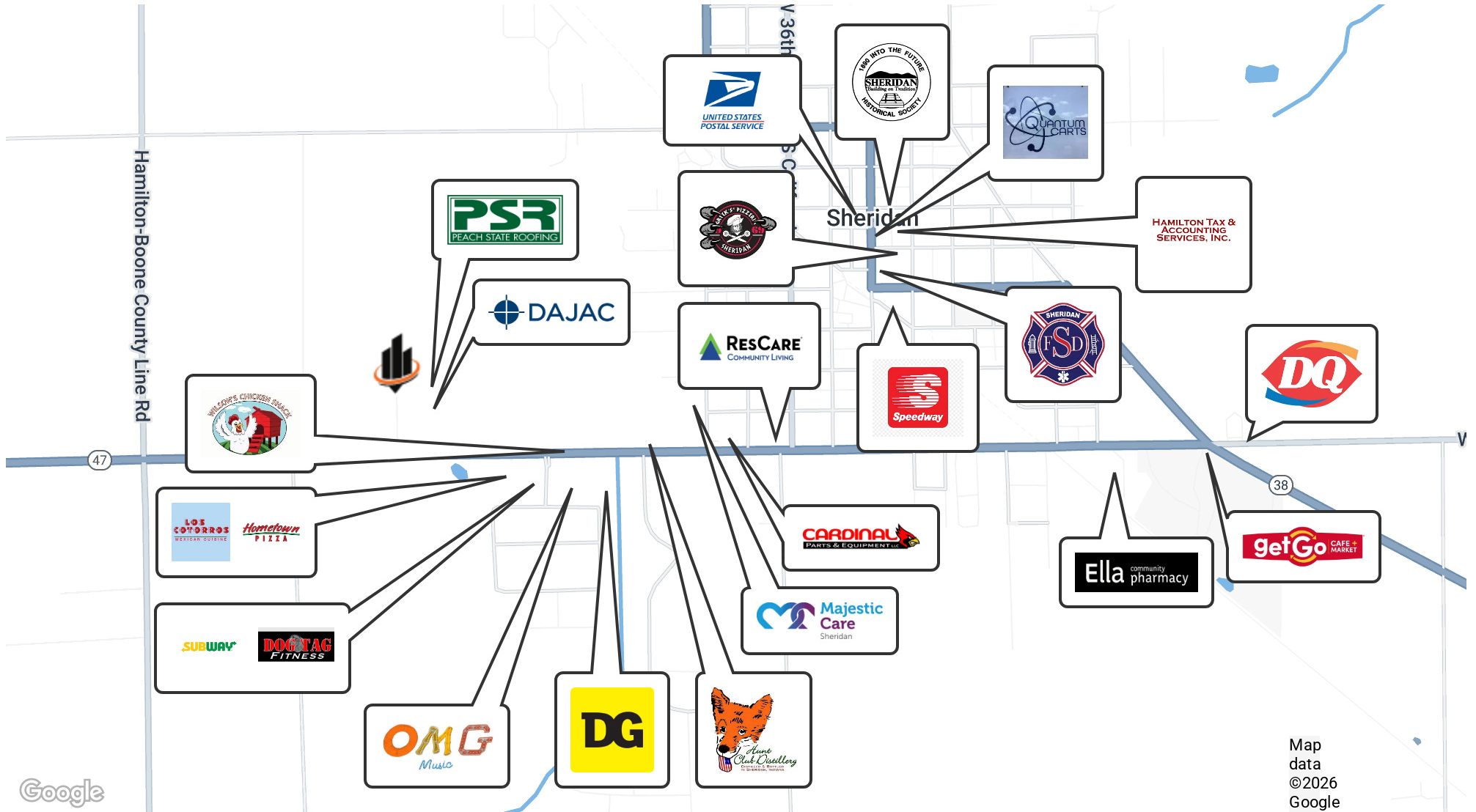
**JESS LAWHEAD, SIOR, CCIM, CBI**  
 O: 317.447.4403  
 jess.lawhead@svn.com  
 IN #RB14047741

## RENDERINGS



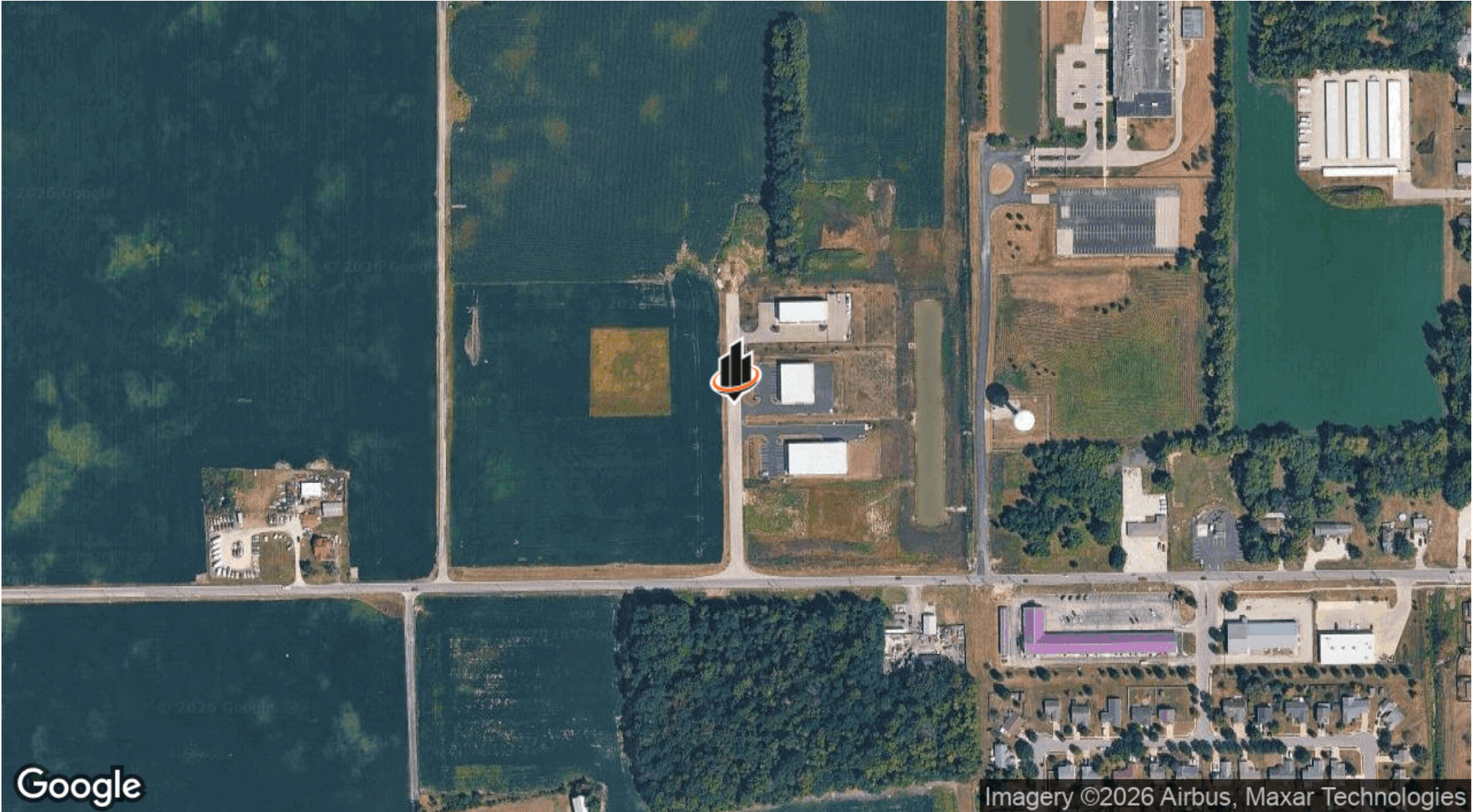
**JESS LAWHEAD, SIOR, CCIM, CBI**  
O: 317.447.4403  
jess.lawhead@svn.com  
IN #RB14047741

# RETAILER MAP



**JESS LAWHEAD, SIOR, CCIM, CBI**  
 O: 317.447.4403  
 jess.lawhead@svn.com  
 IN #RB14047741

**LOCATION MAP**



**JESS LAWHEAD, SIOR, CCIM, CBI**  
O: 317.447.4403  
jess.lawhead@svn.com  
IN #RB14047741