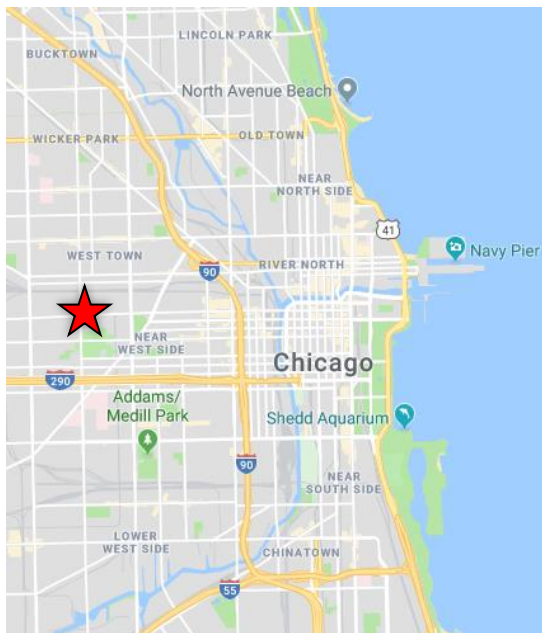


1958 W Lake Street
(NEC Lake St. and Damen)
Chicago, Illinois

FOR LEASE

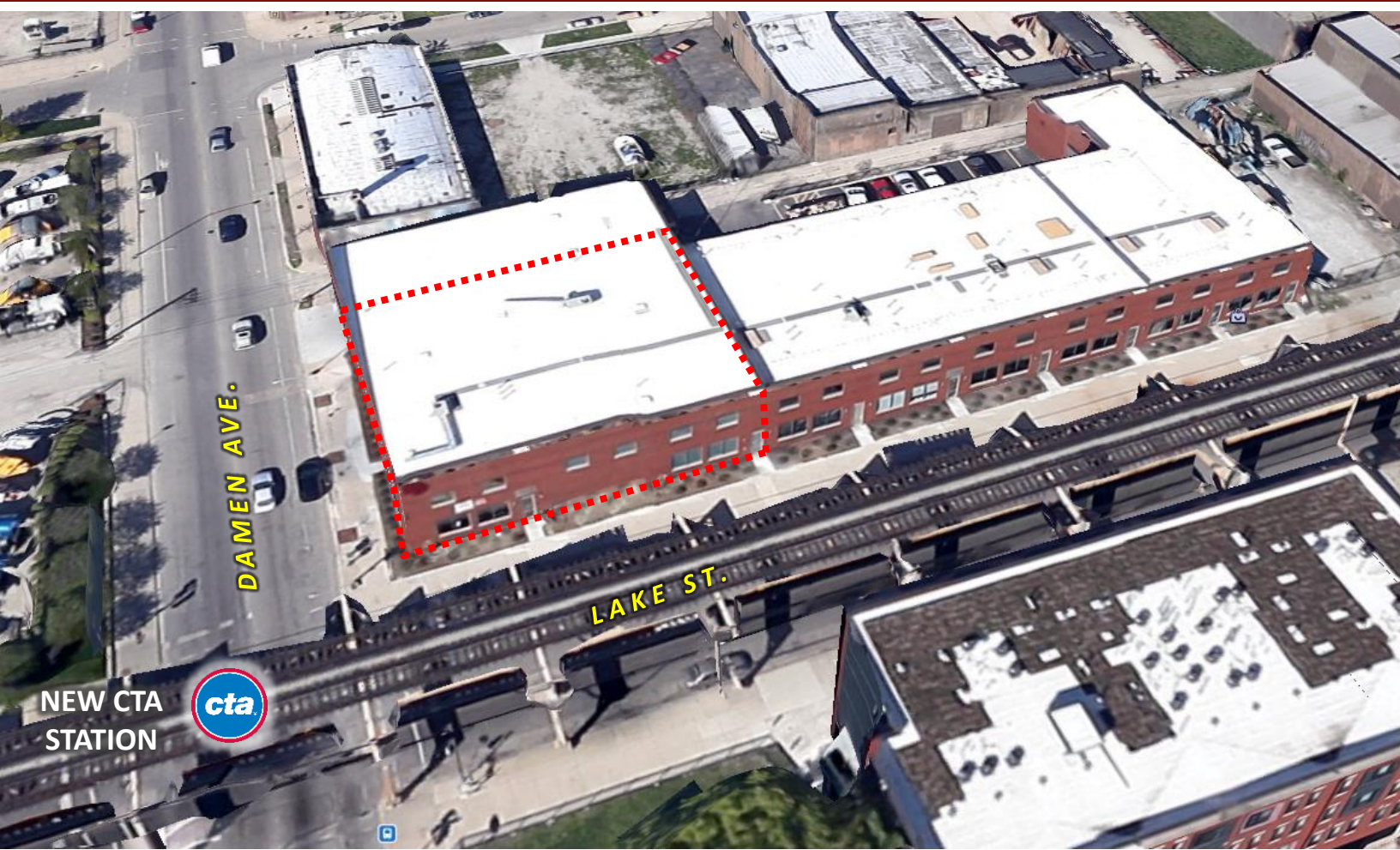
10,465 SF CORNER FLEX / INDUSTRIAL SPACE



- 10,465 SF flex warehouse space ideally located at signalized NEC of Lake and Damen in Chicago's Near West side / West Loop.
- Clear span flex space with 22' ceiling height, two ADA restrooms and kitchenette, production room, 1,000 sf mezzanine office space.
- Recessed dock with direct roll-door access directly into Premises.
- Ample on-site gated parking and common interior recessed dock.
- New CTA Green line transit station completed in 2024.
- New 96-unit mixed-use multi-family across the street
- Three blocks north of the United Center and planned mixed-use development .
- Zoning is PMD 4

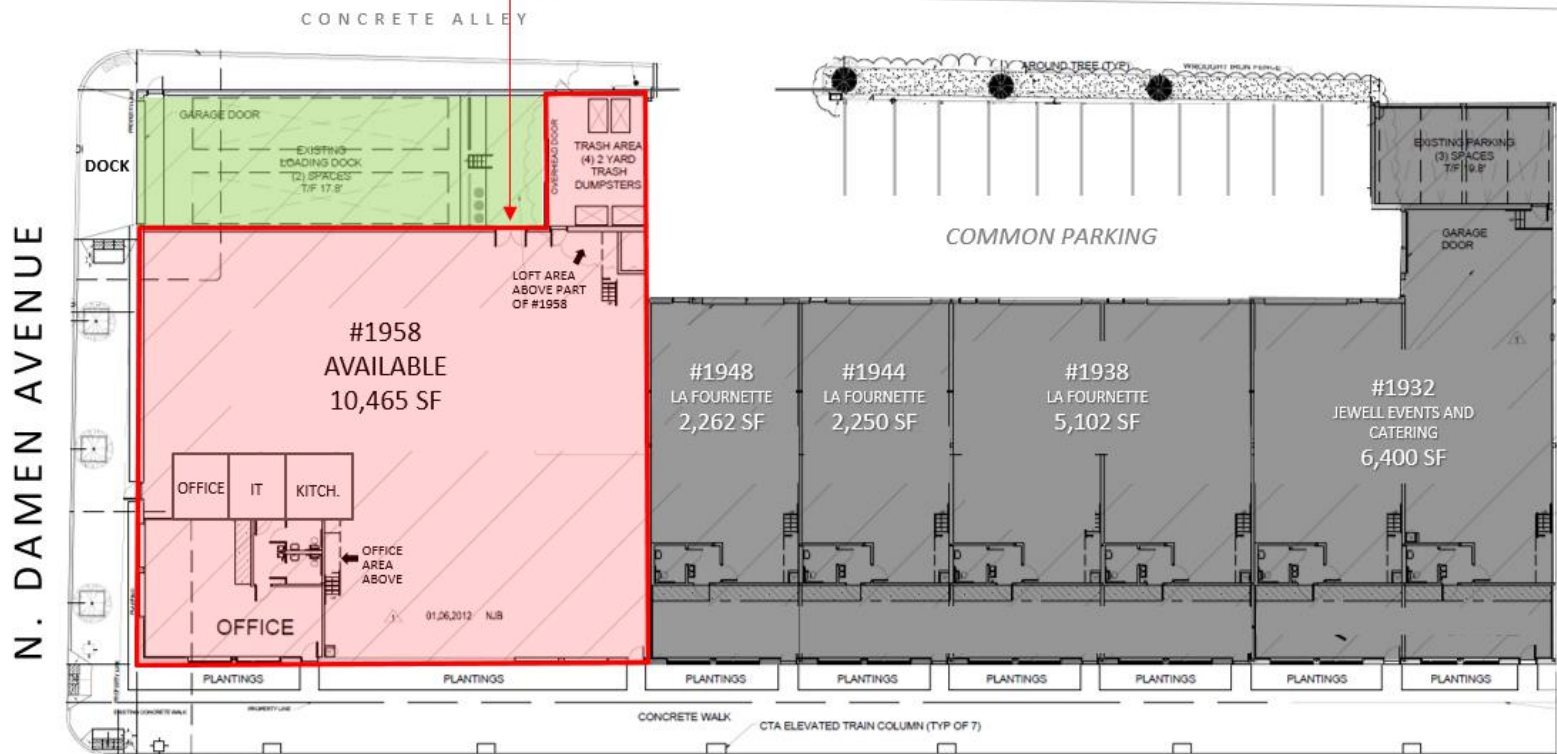


1958 W. Lake St., Chicago, Illinois

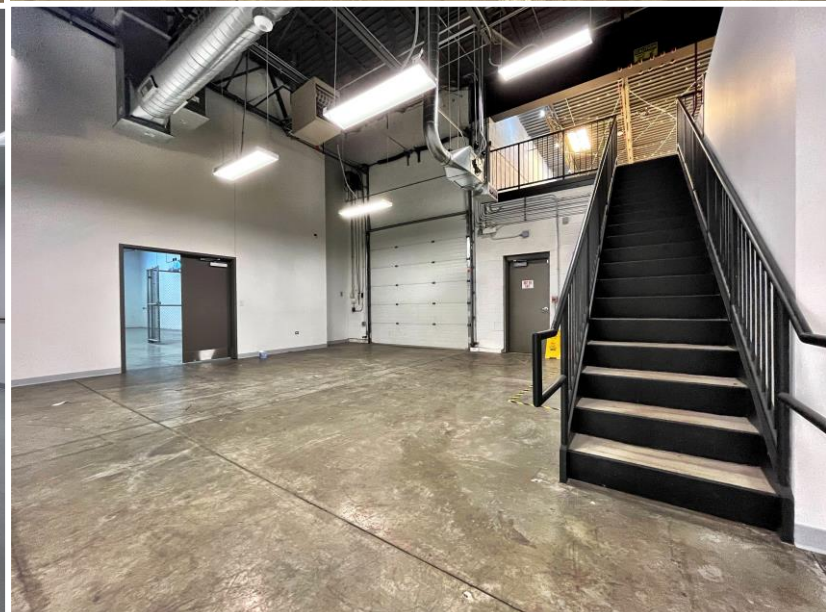
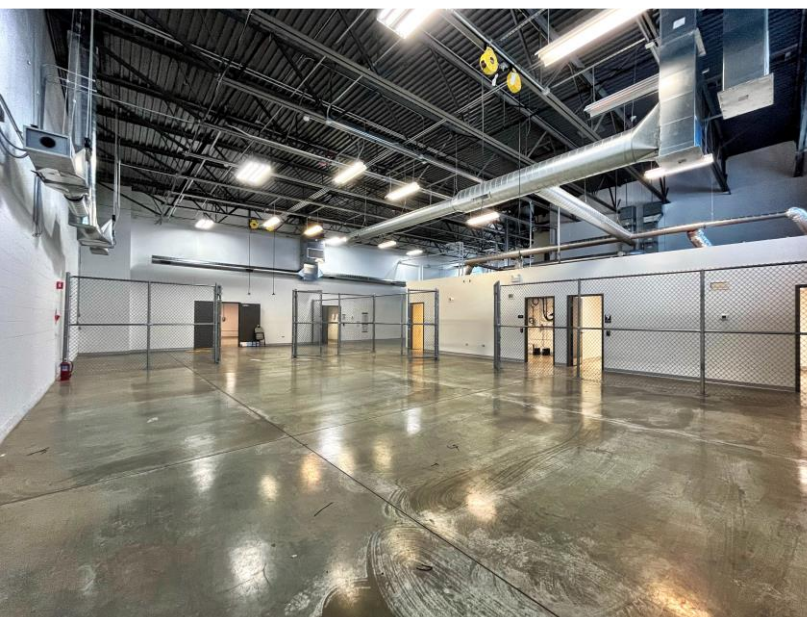


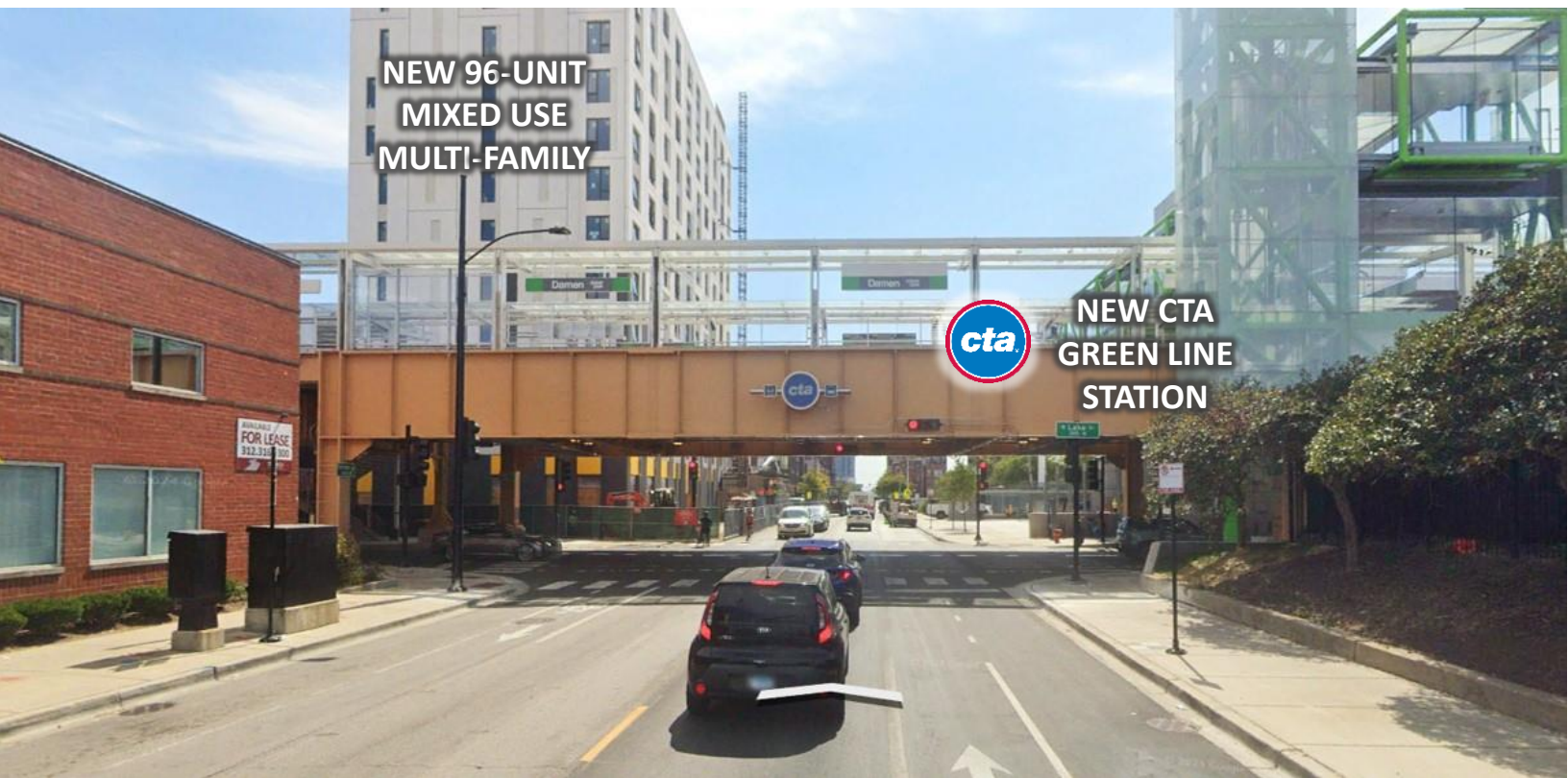


12' Roll door with direct access to dock platform



W. LAKE STREET
(CTA ELEVATED)





CTA Green Line Station at Lake and Damen

