

For Lease

Parkway Professional Center

1717 College Parkway, Carson City, 89706



Tomi Jo Lynch, SIOR, CCIM

First Vice President

+1 775 530 2621

tomijo.lynch@cbre.com

Lic. 1234567

CBRE

Property Overview

Parkway Professional Center

A premier office space destination offering an exceptional blend of convenience, flexibility, and value. Ideally situated near the freeway bypass to US 395, our location ensures seamless access to the north end of Carson City and is just 30 minutes from Reno-Tahoe International Airport. With competitive rates, flexible floor plans tailored to your needs, and ample parking, Parkway Professional Center is designed to support your business's growth and success. Discover a strategic location that combines accessibility with a professional environment, perfect for businesses looking to thrive.

18,800

Annual Average Daily Traffic for College Parkway Street

61,364

2024 Daytime Population within a 5-mile radius

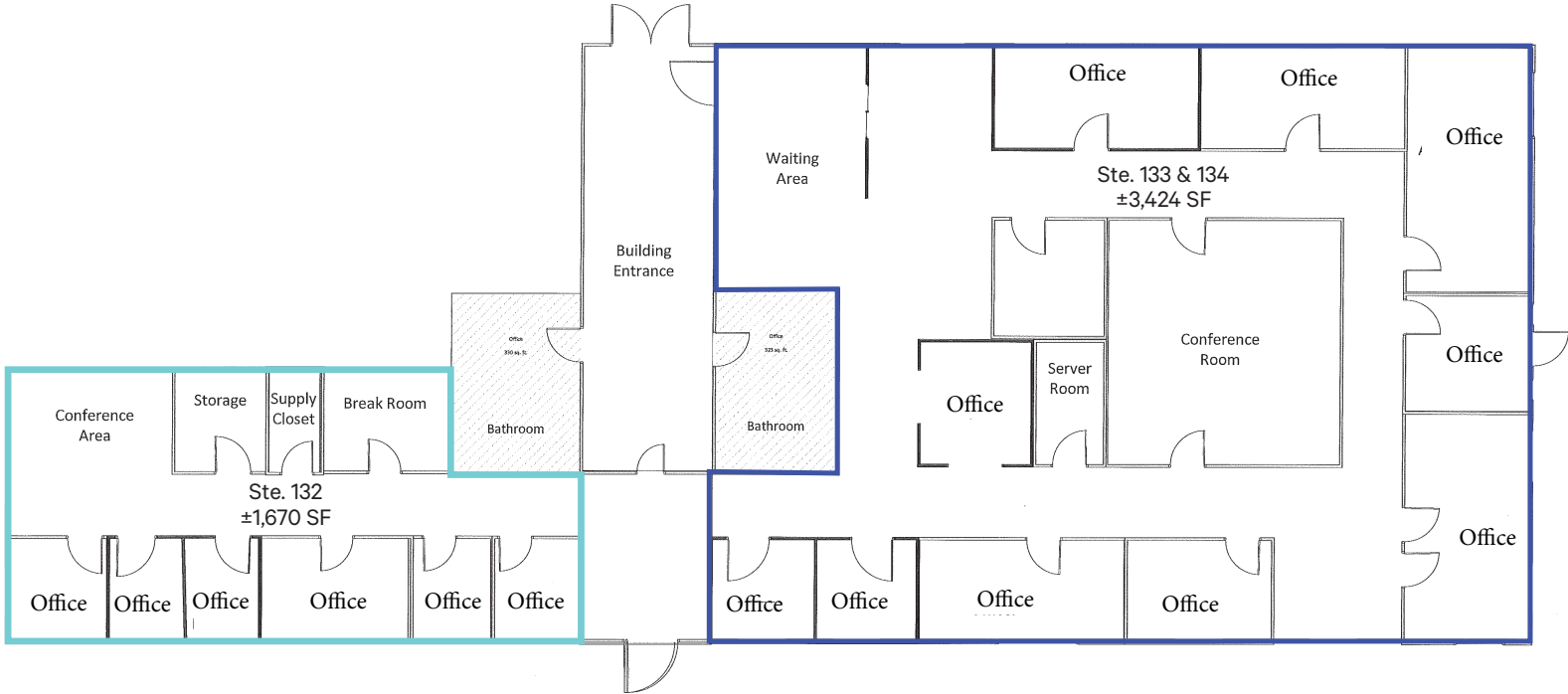
57,281

2024 Population within a 5-mile Radius



Floorplan

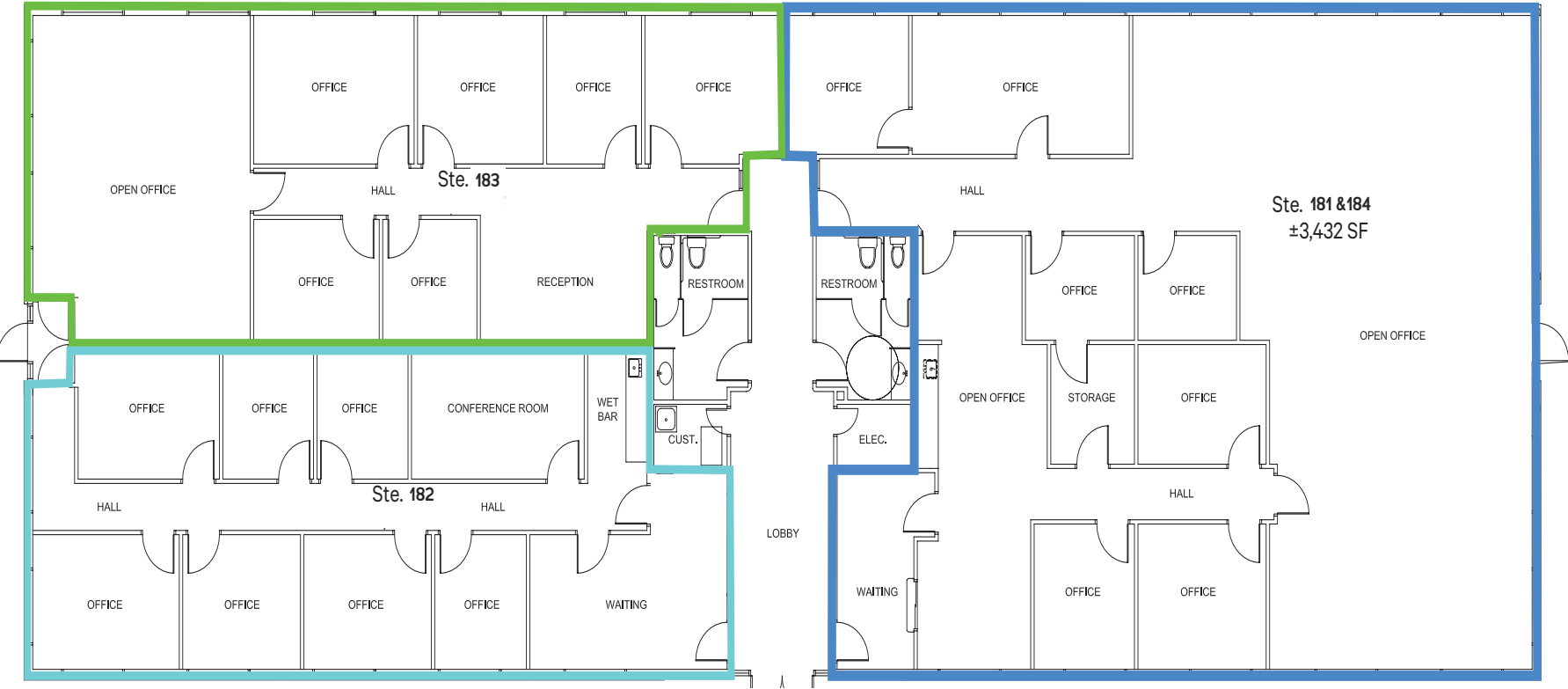
3416 Goni Road | \$1.50/SF Modified Gross



	SUITE	SIZE	PRICE PER SF	COMBINED SUITES	SIZE	PRICE PER SF
●	132	1,670 SF	\$1.50	Suites 132, 133, 134	5,094 SF	\$1.50
●	133 & 134	3,424 SF	\$1.50			

Floorplan

3208 Goni Road | \$1.50/SF Modified Gross

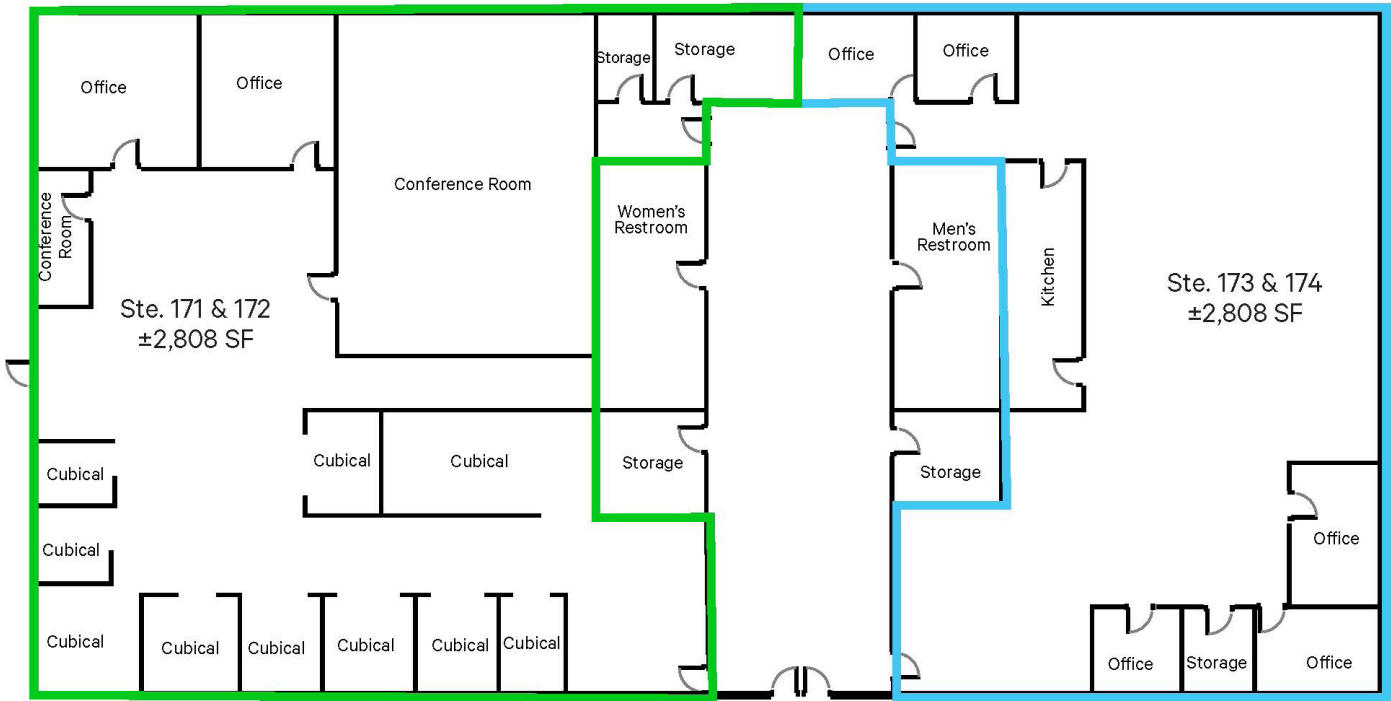


	SUITE	SIZE	PRICE PER SF	COMBINED SUITES	SIZE	PRICE PER SF
●	182	1,688 SF	\$1.50	Suites 181 -184	6,864 SF	\$1.50
●	183	1,744 SF	\$1.50			
●	181 &184	3,432 SF	\$1.50			

Floorplan

3310 Goni Road | \$1.50/SF Modified Gross

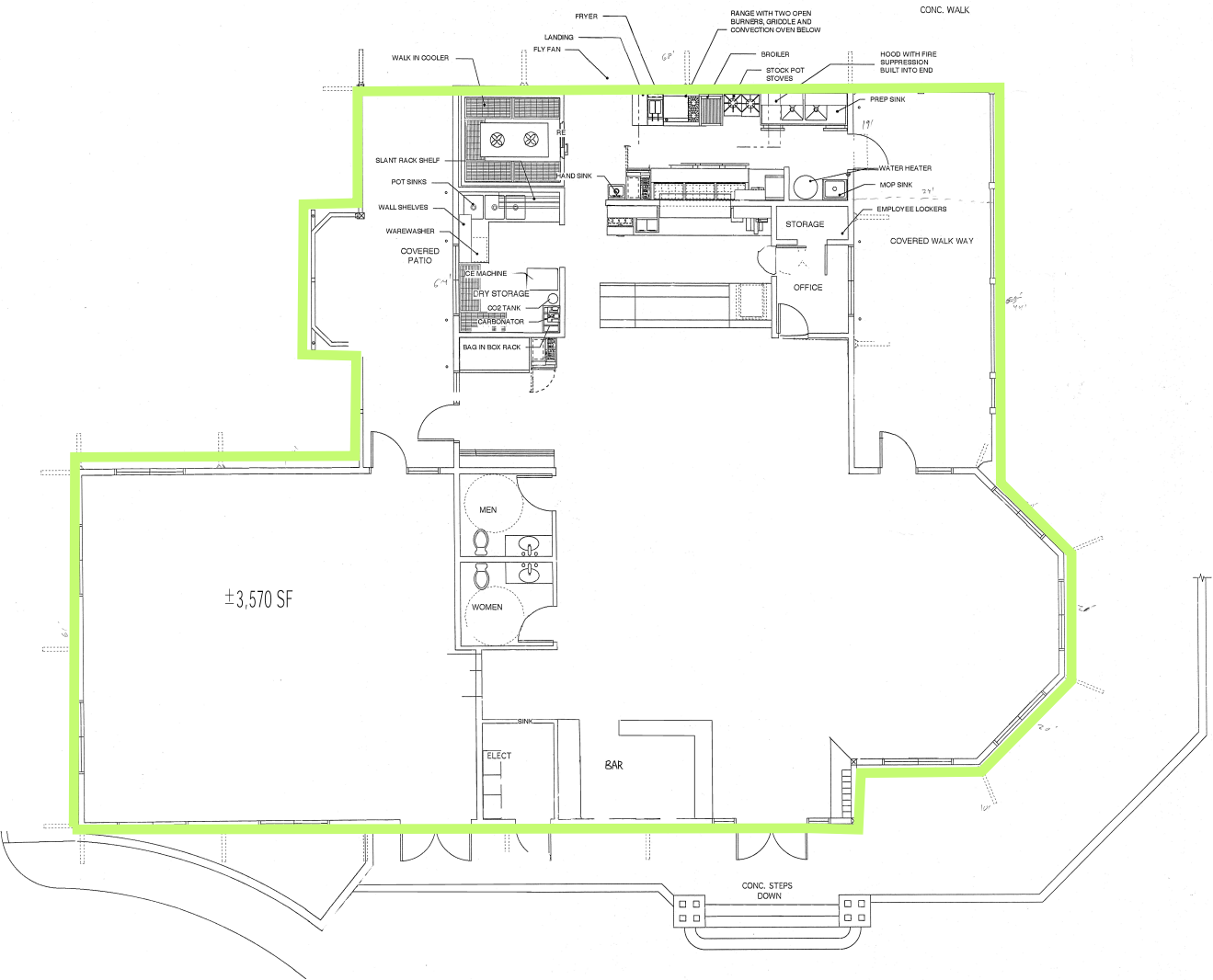
3310 Goni Rd



	SUITE	SIZE	PRICE PER SF	COMBINED SUITES	SIZE	PRICE PER SF
●	171 & 172	2,808 SF	\$1.50	Suites 171 -174	5,616 SF	\$1.50
●	173 & 174	2,808 SF	\$1.50			

Floorplan

1795 College Parkway | \$1.25/SF NNN | NNN \$0.35/SF



SIZE

PRICE PER SF



3,570 SF

\$1.25 NNN

Map | Overview of Location

Parkway Professional Center



Map | Parkway Professional Center

Legend

- 3310 Goni Rd.
- 3208 Goni Rd.
- 3332 Goni Rd.
- 3264 Goni Rd.
- 3416 Goni Rd.
- 3488 Goni Rd.
- 1789 College Pkwy.
- 1761 College Pkwy.
- 1717 College Pkwy.
- 1795 College Pkwy.



For Lease

1795 College Parkway, Carson City, 89706

Parkway Professional

Tomi Jo Lynch, SIOR, CCIM

First Vice President

+1 775 530 2621

tomijo.lynch@cbre.com

Lic. 1234567

CBRE

© 2025 CBRE, Inc. All rights reserved. This information has been obtained from sources believed reliable but has not been verified for accuracy or completeness. CBRE, Inc. makes no guarantee, representation or warranty and accepts no responsibility or liability as to the accuracy, completeness, or reliability of the information contained herein. You should conduct a careful, independent investigation of the property and verify all information. Any reliance on this information is solely at your own risk. CBRE and the CBRE logo are service marks of CBRE, Inc. All other marks displayed on this document are the property of their respective owners, and the use of such marks does not imply any affiliation with or endorsement of CBRE. Photos herein are the property of their respective owners. Use of these images without the express written consent of the owner is prohibited.