

SOUTHAVEN

DESOTO COUNTY • MISSISSIPPI

Possible Bank Site



2.4± Acres
Ground Lease | 1-2 Parcels

View Online
colliers.com/memphis

The City's
Most
Popular &
Fastest
Growing
District

Southaven, Mississippi was Voted

“Top 500 Best Places to Live in the U.S.”

CNN/Money Magazine

- The available **2.4± acre property** is next to **Silo Square®**, a traditional neighborhood development that will be home to over 450 single family homes, over 250 loft units, a town square with shops, dining, plazas, courtyards and year-round recreational activities and concerts at the adjacent amenities. A new **pedestrian bridge** connects **Silo Square®** to **Snowden Grove Park** which allows for residents and patrons to capitalize on businesses within the area.
- The property also lies directly across from **Snowden Grove Park**, an award-winning, state-of-the-art park with a 17-field baseball complex and multiple other sport fields. The park is home to **The Dizzy Dean World Series, NABF World Series & 10-Year-Old USSSA World Series**. Within the park is the **14,000 seat BankPlus Amphitheater**.
- Southaven's **population** increased to **55,780** which totals **146%** in the last **25 years**.
- Southaven is the **largest municipality** in DeSoto County and **3rd** largest in Mississippi.
- Southaven is a fifteen minute drive to **Downtown Memphis & Memphis Int'l Airport** and less than a three hour drive to six different states.

BAYARD SNOWDEN, SIOR
Direct: 901 312 4906
Mobile: 901 331 1675
bayard.snowden@colliers.com

ED THOMAS, CCIM
Direct: 901 312 4912
MOBILE: 901 605 0561
ed.thomas@colliers.com

ANDREW PHILLIPS, SIOR, CCIM
Direct: 901 312 4916
Mobile: 901 289 6805
andrew.phillips@colliers.com

Colliers

COLLIERS | Memphis
6363 Poplar Avenue, Suite 220
Memphis, TN 38119
901 375 4800
colliers.com/memphis

SOUTHAVEN

DESOTO COUNTY • MISSISSIPPI



Area Demographics

	1 Mile	3 Miles	5 Miles
Daytime Population	2,930	26,630	86,506
Households	765	11,999	30,338
Average HH Income	\$96,073	\$100,116	\$88,076

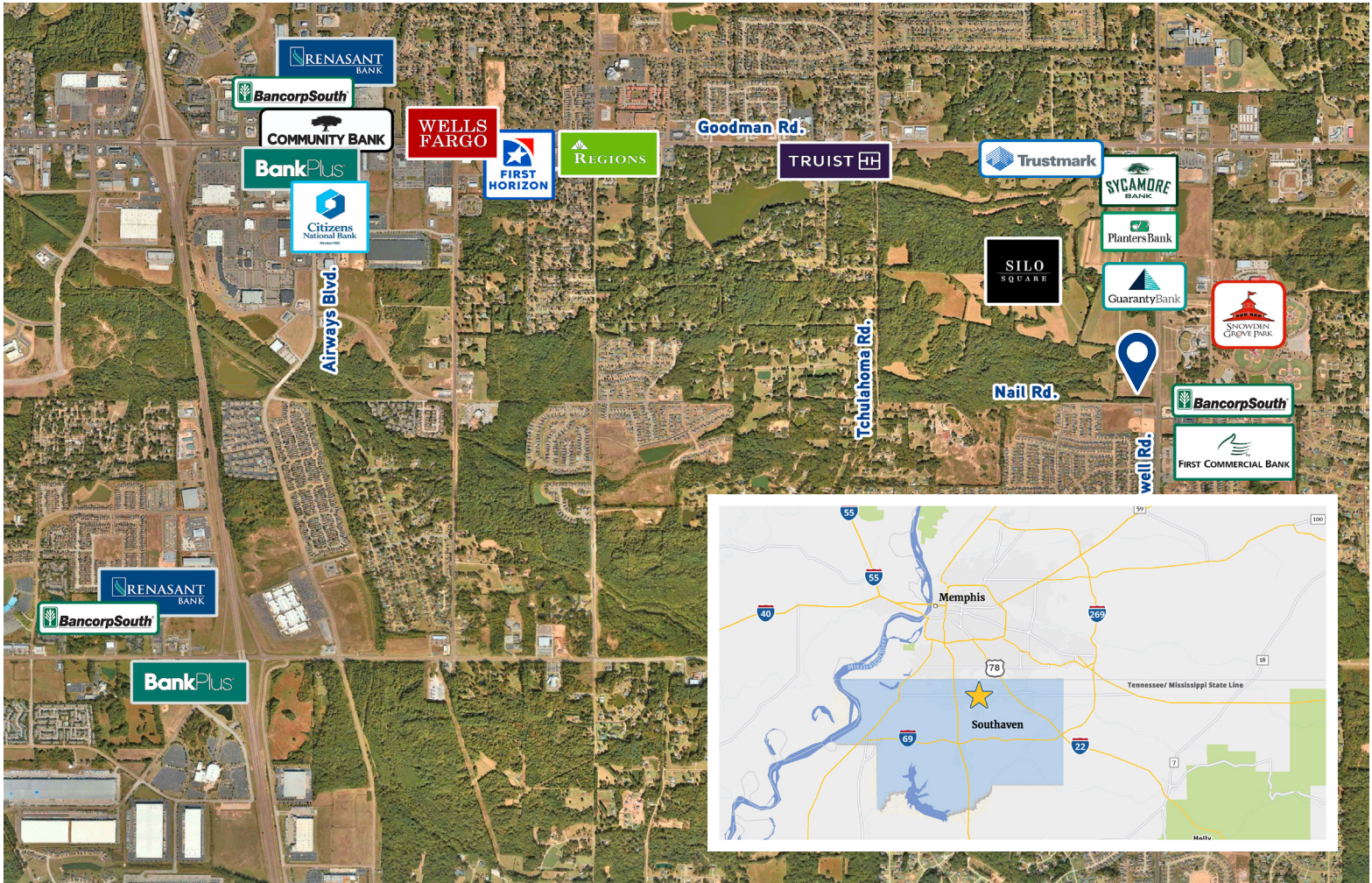


Traffic Counts

39,000+ VPD
on Goodman Road

9,000+ VPD
on Getwell Road

Southaven Area Banks



BAYARD SNOWDEN, SIOR
Direct: 901 312 4906
Mobile: 901 331 1675
bayard.snowden@colliers.com

ED THOMAS, CCIM
Direct: 901 312 4912
MOBILE: 901 605 0561
ed.thomas@colliers.com

ANDREW PHILLIPS, SIOR, CCIM
Direct: 901 312 4916
Mobile: 901 289 6805
andrew.phillips@colliers.com



COLLIERS | Memphis
6363 Poplar Avenue, Suite 220
Memphis, TN 38119
901 375 4800
colliers.com/memphis