

100 PARK PLACE

*±1,777 & ±3,306 SF (Divisible) Medical/Office
Space for Lease in San Ramon*

SAN RAMON, CA 94583

WYNNE ZHANG

925.905.1107 | wynne.zhang@kidder.com

LIC N° 02248016

IAN THOMAS

925.905.1105 | ian.thomas@kidder.com

LIC N° 01279455

IDEALLY LOCATED OFFICE & MEDICAL SPACE IN SAN RAMON



LOCATION HIGHLIGHTS

Premium location on Crow Canyon Rd in San Ramon

Office & medical uses permitted

Minutes to I-680 with convenient regional access

Walkable/drive-to retail, dining, and services

Ample on-site parking for patients and staff

OFFICE AVAILABILITY

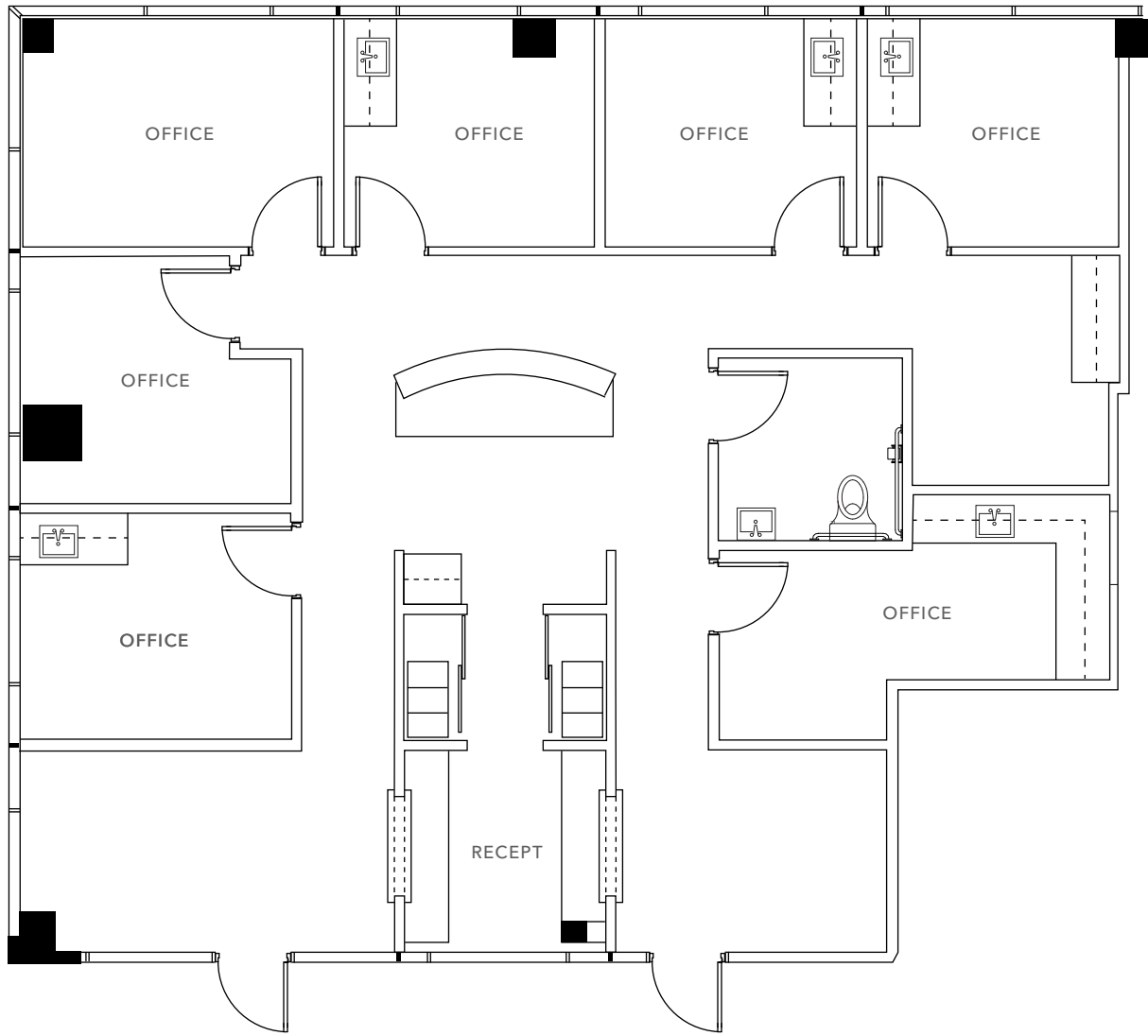
SUITE 260 ±1,777 SF

SUITE 120 ±3,306 SF

4/1000
PARKING RATIO

CONTACT
BROKER FOR LEASE RATE

SUITE 260 FLOOR PLAN



±1,777 SF

AVAILABLE

CONTACT

BROKER FOR LEASE RATES

NOW

AVAILABLE

Plug-and-play medical layout with existing improvements in place

4 exam rooms with sinks, doctor's office and admin/workroom

Efficient patient flow with built-in clinical support spaces

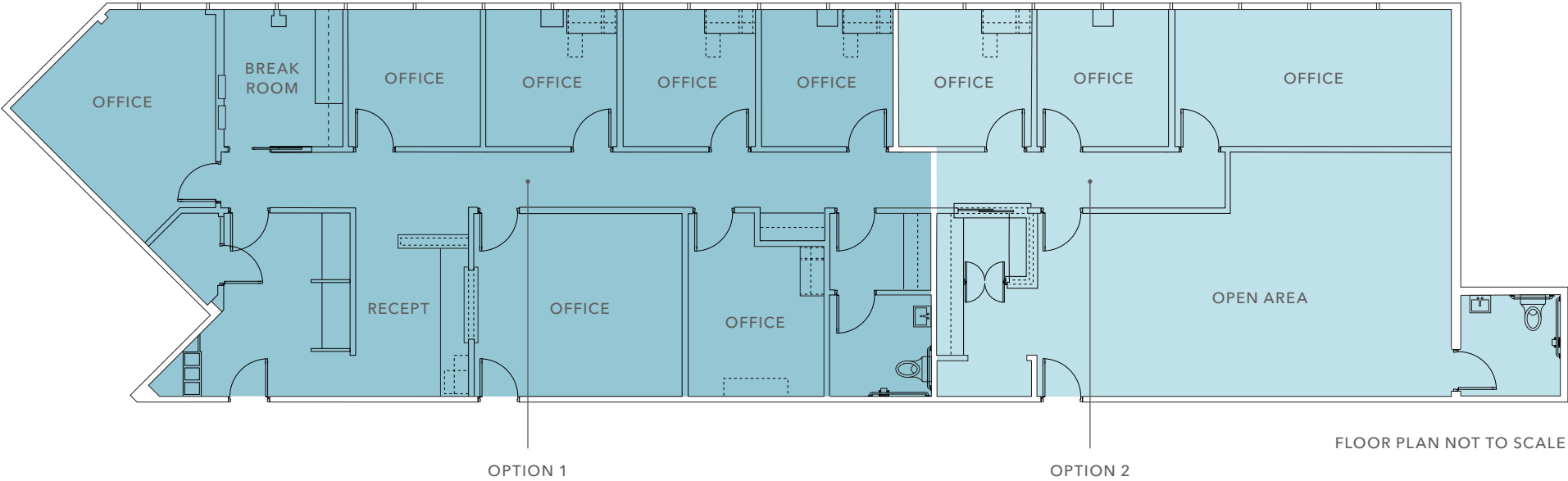
FLOOR PLAN NOT TO SCALE

SUITE 120 FLOOR PLAN

±3,306 SF
AVAILABLE

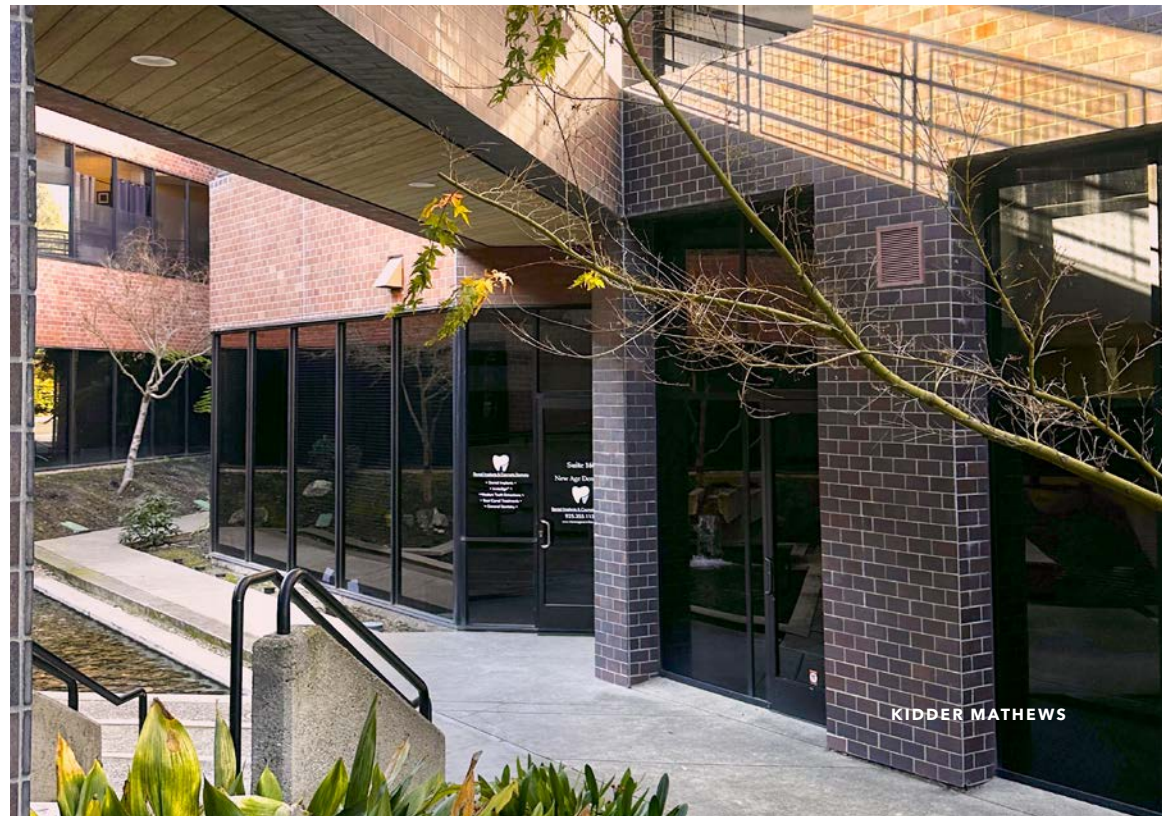
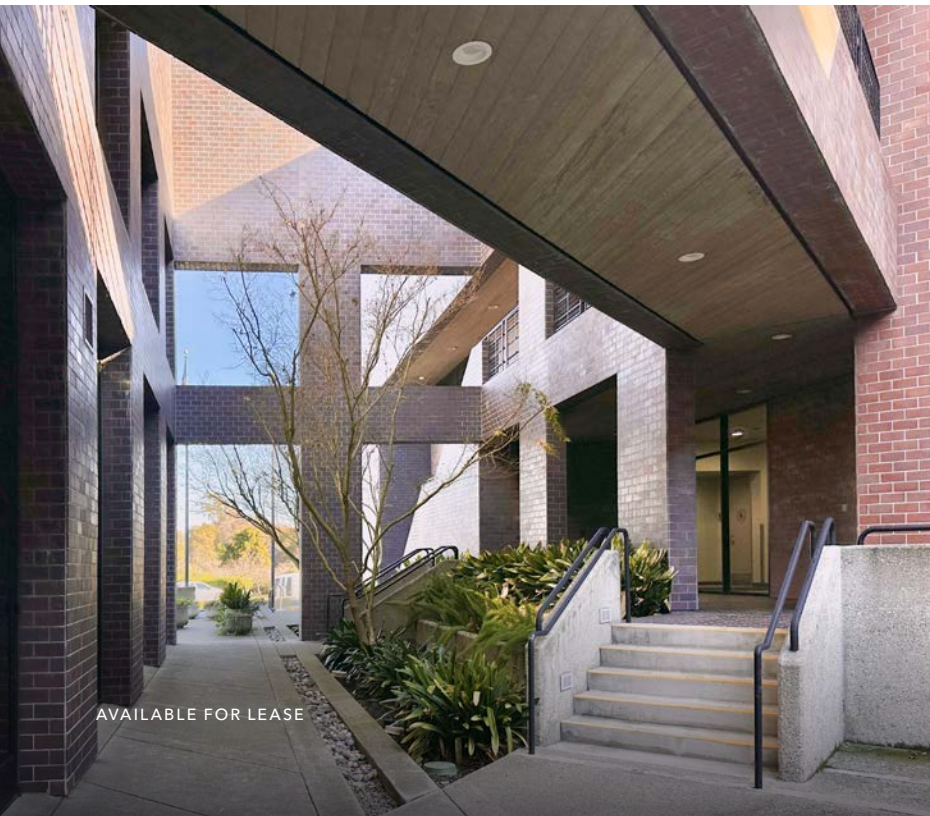
CONTACT
BROKER FOR LEASE RATES

NOW
AVAILABLE



Divisible to smaller suite: can include 3 offices, 1 restroom, and large open area

100 PARK PLACE



AVAILABLE FOR LEASE

KIDDER MATHEWS



100 PARK PLACE

*For more information on
this property, please contact*

WYNNE ZHANG
925.905.1107
wynne.zhang@kidder.com
LIC N° 02248016

IAN THOMAS
925.905.1105
ian.thomas@kidder.com
LIC N° 01279455

KIDDER.COM

This information supplied herein is from sources we deem reliable. It is provided without any representation, warranty, or guarantee, expressed or implied as to its accuracy. Prospective Buyer or Tenant should conduct an independent investigation and verification of all matters deemed to be material, including, but not limited to, statements of income and expenses. Consult your attorney, accountant, or other professional advisor. All Kidder Mathews designs are the sole property of Kidder Mathews. Branded materials and layouts are not authorized for use by any other firm or person.

