

50 SOUTH STEELE STREET

Suite 435

DENVER, CO 80209

1,605 RSF

OFFICE SUBLEASE | AVAILABLE IMMEDIATELY



BUILDING SPECIFICATIONS

Address

50 South Steele Street
Suite 435
Denver, CO 80209

Available

Immediately

Asking Rate

Contact Broker

Size

1,605 RSF

Available Through

April 30, 2027

Lease Term

Flexible

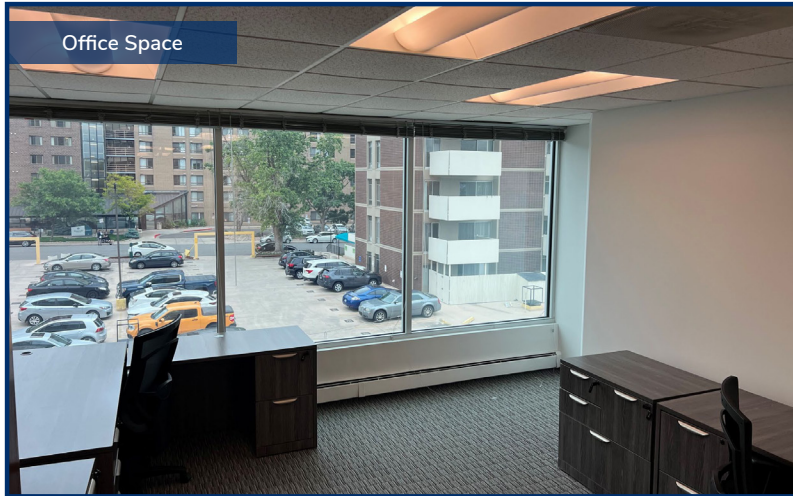
HIGHLIGHTS

- Across from Cherry Creek Mall
- Abundant Retail, Restaurant & Health Club Amenities
- Walking Distance to Cherry Creek North
- Less than 40 Minutes to Denver International Airport
- Less than 15 Minutes to Downtown
- On-Site Property Management
- Conferencing Facilities
- Card Key Access
- Ample Visitor Parking
- Men's and Women's Showers and Lockers
- Coffee Service

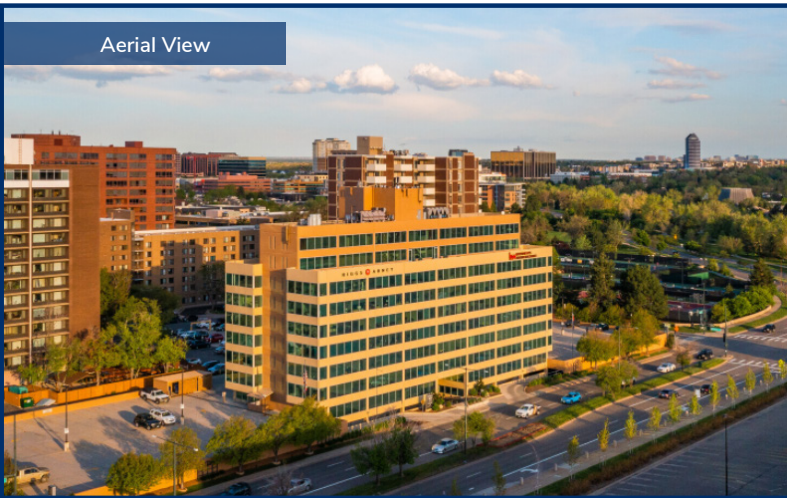
Conference Room



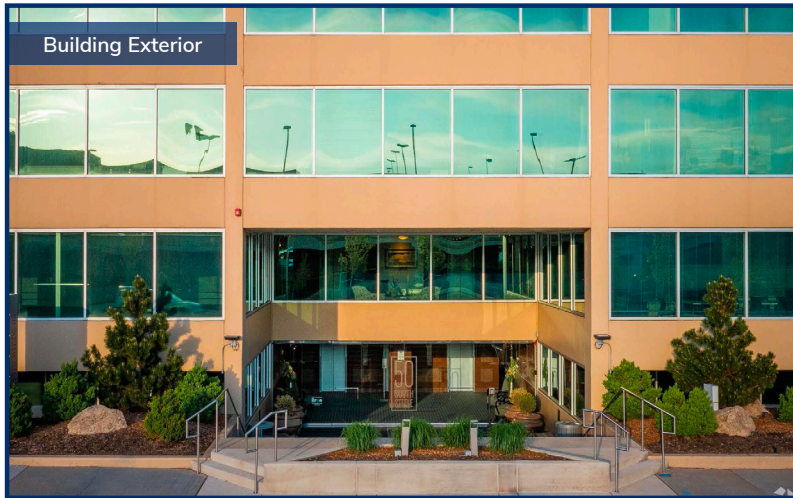
Office Space



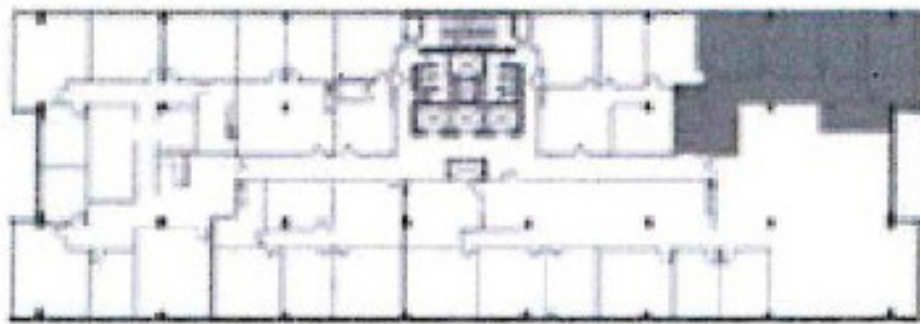
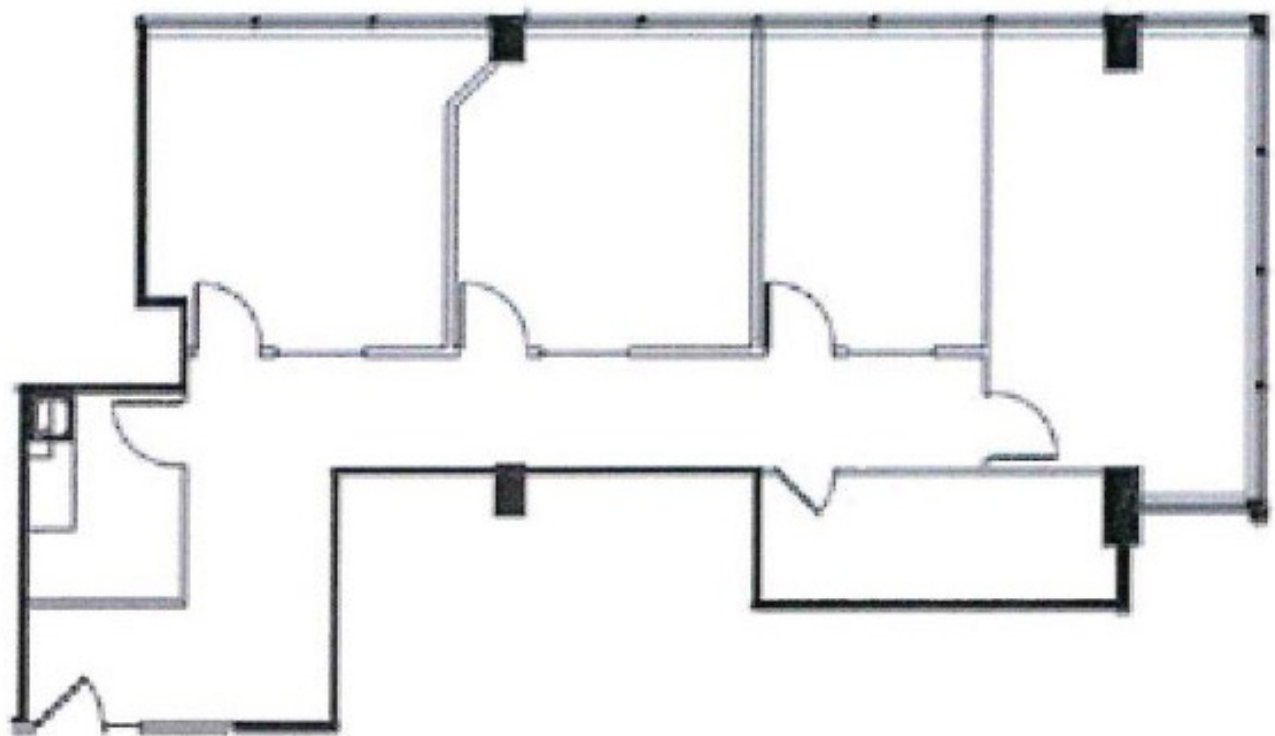
Aerial View



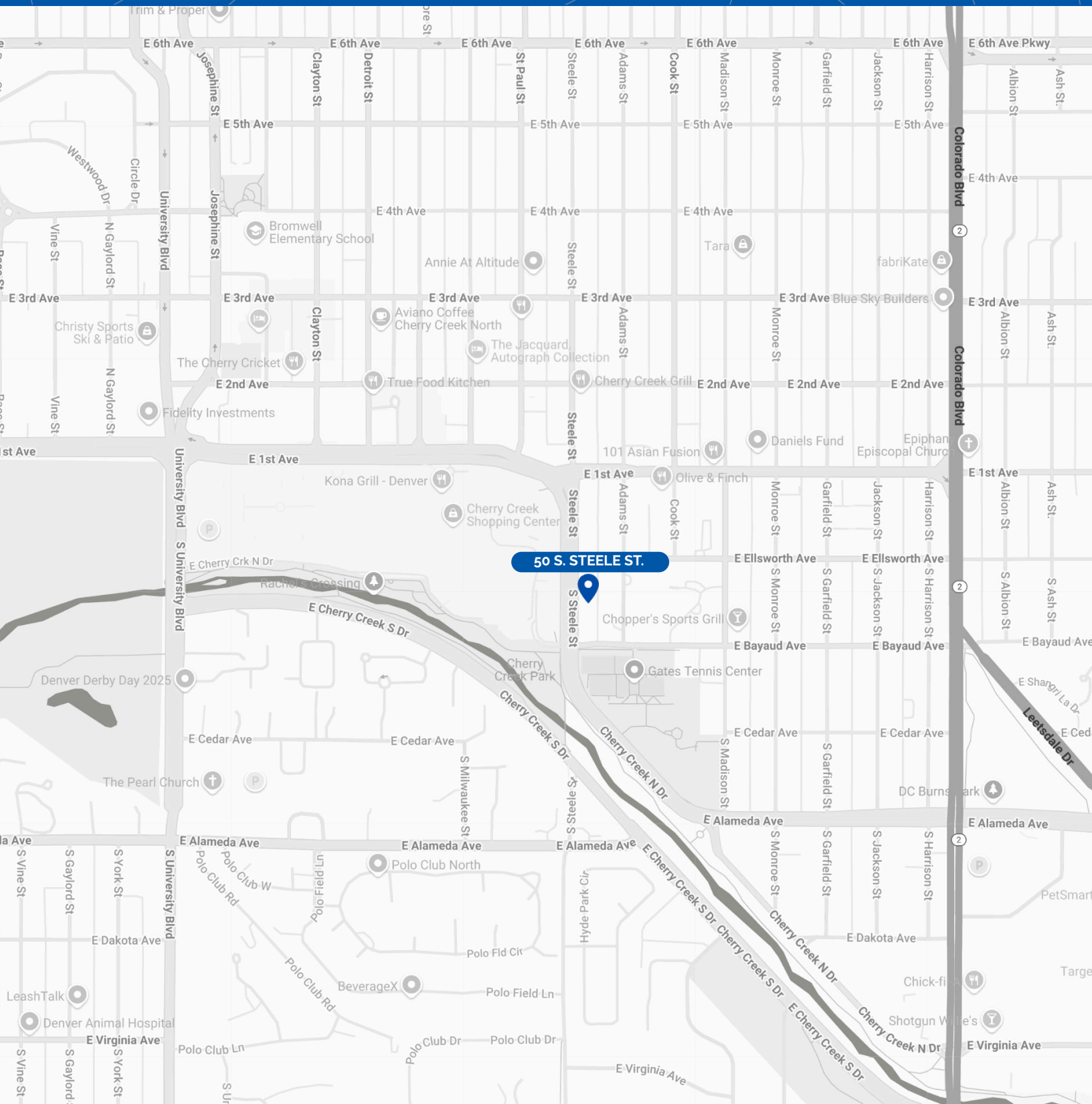
Building Exterior



FLOOR PLAN



MAP



FOR LEASE INFORMATION:

GREG PAUGH
greg.paugh@streamrealty.com
303.957.5305

LINDSAY BROWN
lindsay.brown@streamrealty.com
303.957.5308

