

# POINTE PROFESSIONAL CENTER

Office Space in Prime Location



**FOR LEASE**  
1427 W. Saginaw St.  
East Lansing, MI

**AVAILABLE SPACE:**  
Suite 200: 4,761 SF  
Suite 202: 4,765 SF

**ERIC F. ROSEKRANS, CCIM, CPM**  
Executive Vice President  
Direct: 517 319-9209  
[eric.rosekrans@martincommercial.com](mailto:eric.rosekrans@martincommercial.com)

**THOMAS JAMIESON, SIOR**  
Senior Vice President, Office Advisor  
Direct: 517 319-9235  
[thomas.jamieson@martincommercial.com](mailto:thomas.jamieson@martincommercial.com)



**Martin**

1111 Michigan Ave., Ste 300  
East Lansing, MI 48823  
[martincommercial.com](http://martincommercial.com)

## PROPERTY INFORMATION

### Multi-tenant 19,546 SF building anchored by Fifth Third Bank

4,761 - 9,526 SF available. Located on the high traffic corner of Coolidge and Saginaw in the Frandor Shopping Center area. Prominent exposure with potential building signage. Space has a raised floor to accommodate technology and floor plan changes.

#### LEASE RATE:

# \$22.00

PSF/YR, Plus Janitorial



**CONVENIENT TO:**  
E. Lansing, MSU &  
Highways



**SIZE:** Combined  
total 9,526 SF  
Two suites available



**High visibility  
corner**



**NEARBY RETAILERS:** Kroger,  
Ace Hardware, Biggby,  
TJ Maxx & more



**PARKING:** Approx.  
56 spaces (including  
handicap & reserved)



**Open space plan with  
numerous windows  
ideal for tech users**

© 2024 MARTIN COMMERCIAL PROPERTIES, INC. ALL RIGHTS RESERVED. THIS INFORMATION HAS BEEN OBTAINED FROM SOURCES BELIEVED RELIABLE BUT HAS NOT BEEN VERIFIED FOR ACCURACY OR COMPLETENESS. YOU SHOULD CONDUCT A CAREFUL, INDEPENDENT INVESTIGATION OF THE PROPERTY AND VERIFY ALL INFORMATION. ANY RELIANCE ON THIS INFORMATION IS SOLELY AT YOUR OWN RISK. MARTIN COMMERCIAL PROPERTIES AND THE MARTIN LOGO ARE SERVICE MARKS OF MARTIN COMMERCIAL PROPERTIES, INC. ALL OTHER MARKS DISPLAYED ON THIS DOCUMENT ARE THE PROPERTY OF THEIR RESPECTIVE OWNERS. PHOTOS HEREIN ARE THE PROPERTY OF THEIR RESPECTIVE OWNERS. USE OF THESE IMAGES WITHOUT THE EXPRESS WRITTEN CONSENT OF THE OWNER IS PROHIBITED.

## AREA INFORMATION

### 0.6 Miles

To US-127 Highway Entrance

### 1.3 Miles

To Michigan State University

### 2 Miles

To Eastwood Towne Center

### 3.3 Miles

To Downtown Lansing

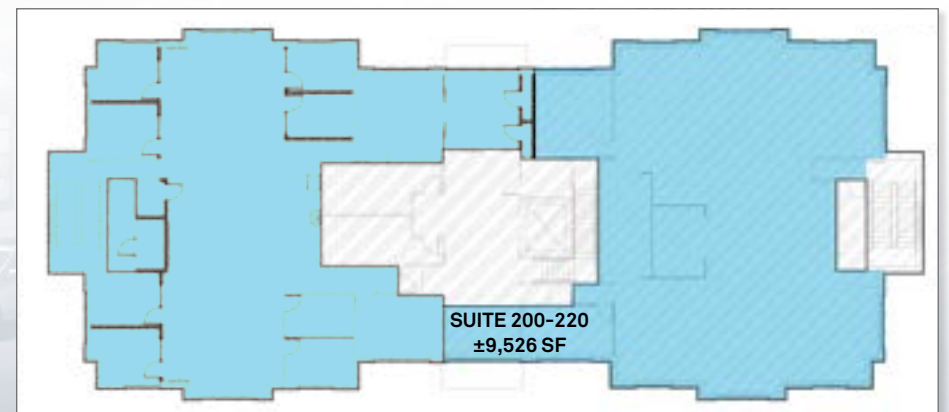
### Walking Distance

To restaurants, shopping, services and more!



## DEMOGRAPHICS

Proximity	1-Mile	3-Mile	5-Mile
Total Population	96,668	181,733	318,444
Average HH Income	\$64,989	\$70,745	\$81,226



**SUITE 200 & Shared Lobby w/key card access**



SUITE 220

