



PROPERTY DESCRIPTION

- ▶ Lease Rate: Call for Pricing
- ▶ 2,750 SF of Retail Space Available
- ▶ Landlord to Renovate Interior and Deliver Space in Vanilla Shell Condition
- ▶ Exterior Patio has Beautiful Covered Awning & Lush Landscaping
- ▶ Excellent Location in Historic Springfield with 1748 Bakehouse, Crispy's, Juice Wine Bar, The Block Skate Supply, Stumpy's Hatchet House & More on the Block!
- ▶ 20,000 ± Cars Per Day on Main Street
- ▶ 18,000 ± Cars Per Day on 8th Street



o. 904.241.1151

ELIAS HIONIDES | ehionides@petrajax.com

RICHARD TRENDL | rich@petrajax.com

ASHLEIGH SHIM | ashleigh@petrajax.com



ABOUT

Features include new electrical, plumbing, and HVAC in 2018. Position your business on the bustling block at Main and 8th Streets. This high-visibility location neighbors like 1748 Bakehouse, Crispy's, and Stumpy's Hatchet House, to name a few. Embrace the vibrancy of this dynamic neighborhood—secure your spot today!

PHOTOS



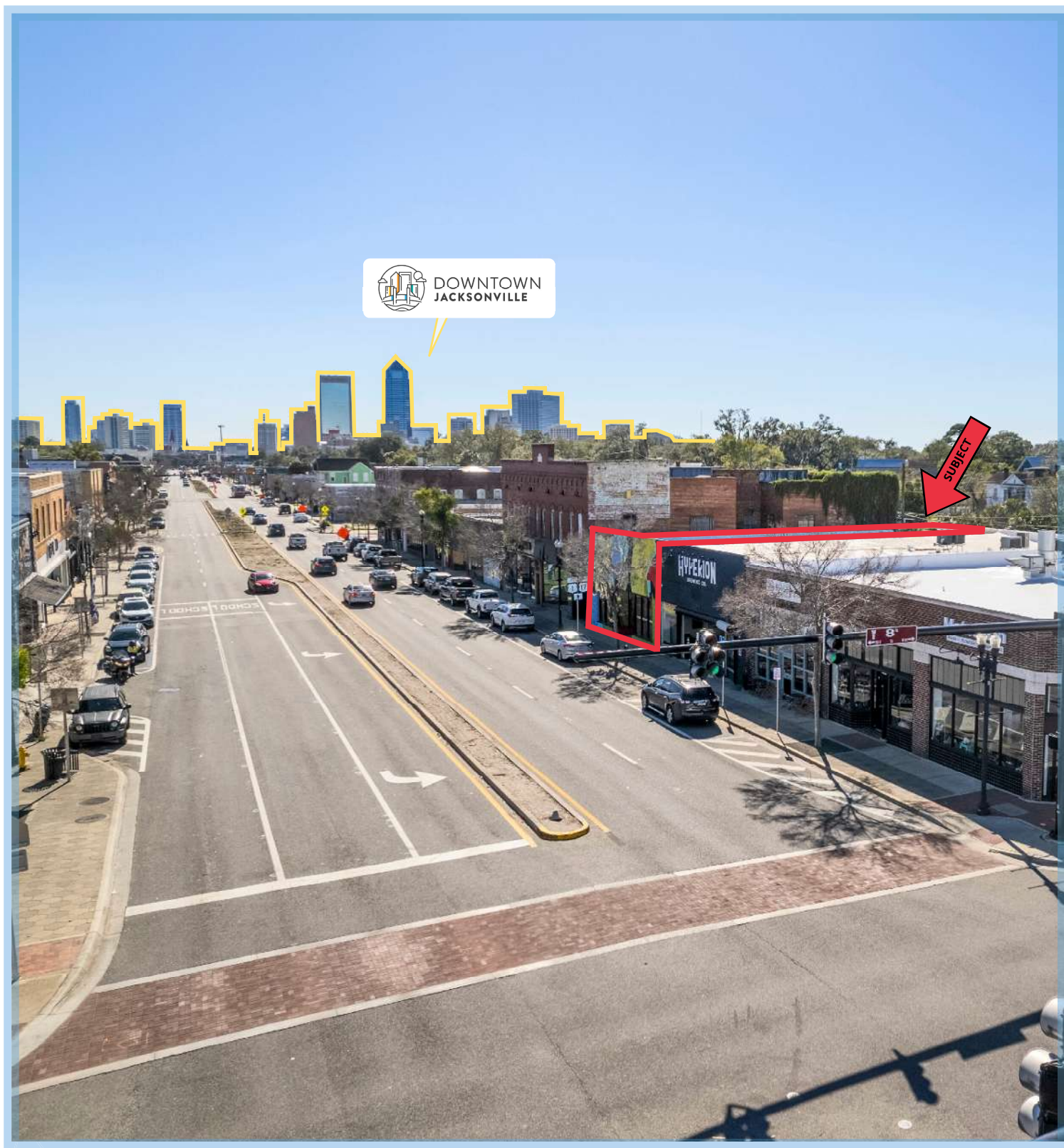
o. 904.241.1151

ELIAS HIONIDES | ehionides@petrajax.com

RICHARD TRENDL | rich@petrajax.com

ASHLEIGH SHIM | ashleigh@petrajax.com

AERIAL VIEW



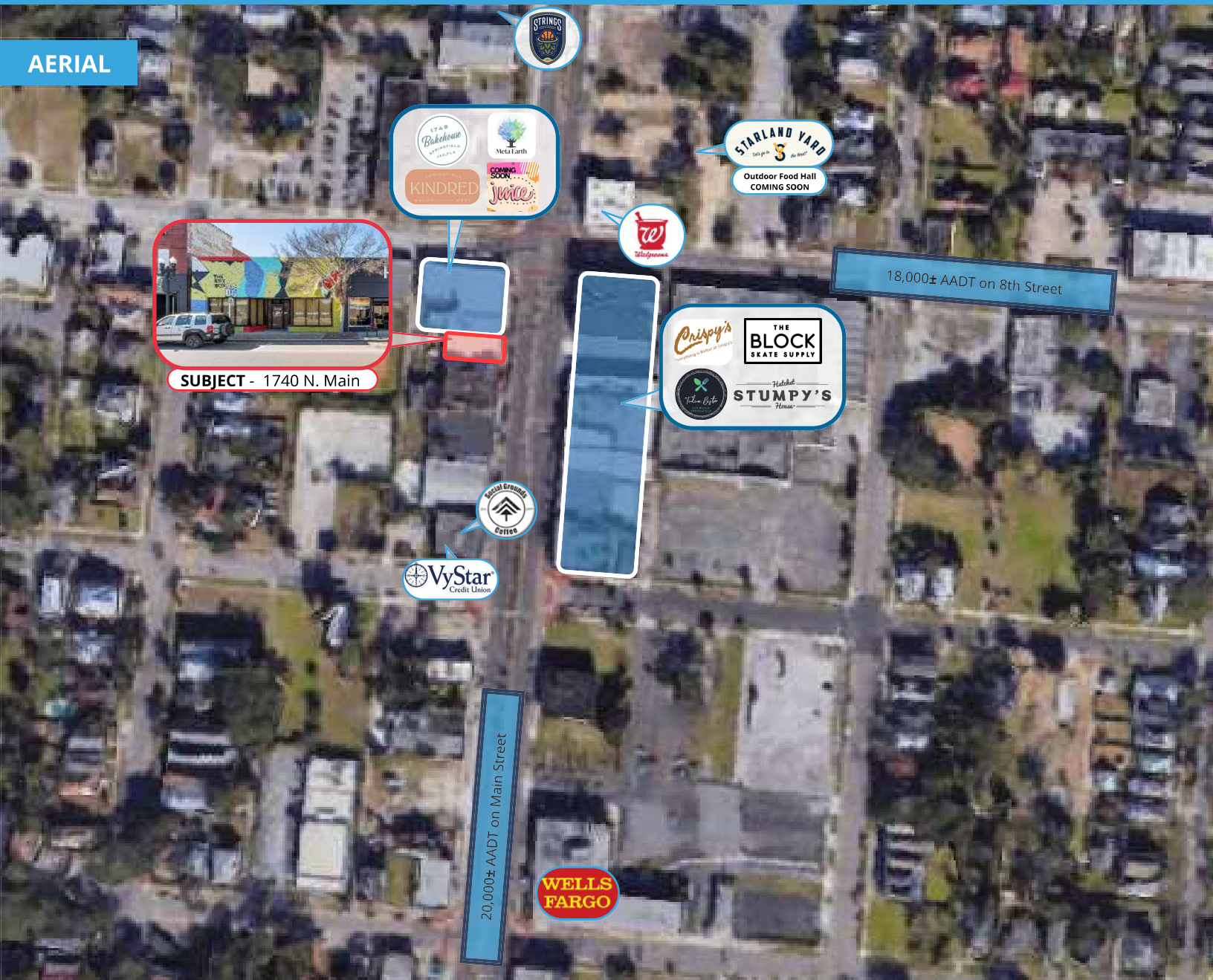
o. 904.241.1151

ELIAS HIONIDES | ehionides@petrajax.com

RICHARD TRENDL | rich@petrajax.com

ASHLEIGH SHIM | ashleigh@petrajax.com

AERIAL



SUBJECT - 1740 N. Main

LOCATION DETAILS

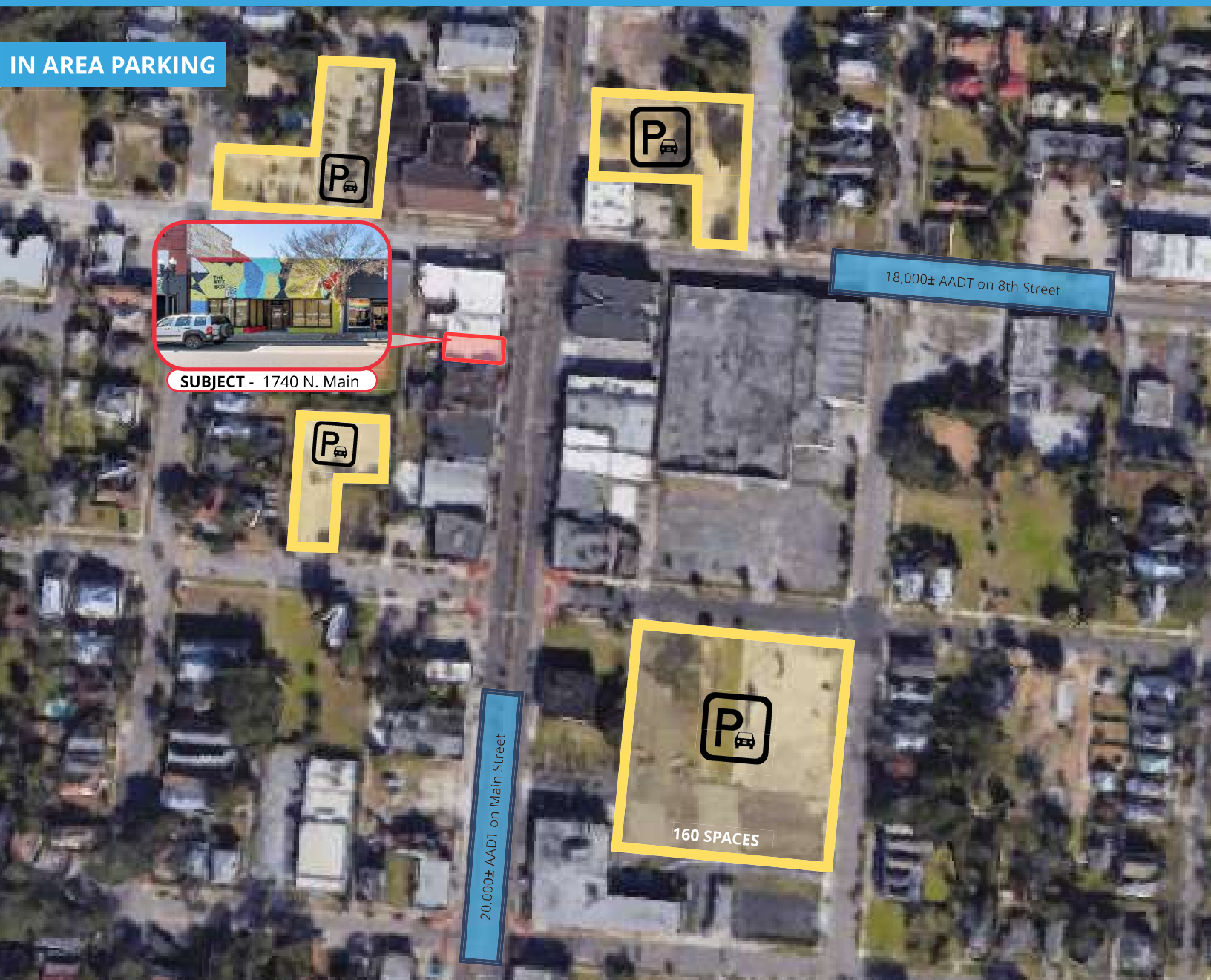
- Located in Booming Historic Springfield
- 1748 Bakehouse, Crispy's, Reddi Arts, The Block Skate Supply, Stumpy's Hatchet House & More on the Block!
- Located Directly on Main Street In Close Proximity to Downtown Jacksonville
- 201 Unit Luxury Apartment Complex (Now Leasing) 7 Blocks Away

o. 904.241.1151

ELIAS HIONIDES | ehionides@petrajax.com

RICHARD TRENDL | rich@petrajax.com

ASHLEIGH SHIM | ashleigh@petrajax.com



DEMOGRAPHICS

	1-Mile	3-Mile	5-Mile
POPULATION			
2024 Total Population:	16,006	86,236	221,086
Median Age:	40	39	39
HOUSEHOLDS			
2024 Total Households:	6,212	36,562	91,396
Average Household Income:	\$30,716	\$32,533	\$41,601

o. 904.241.1151

ELIAS HIONIDES | ehionides@petrajax.com

RICHARD TRENDEL | rich@petrajax.com

ASHLEIGH SHIM | ashleigh@petrajax.com