



L. MASON CAPITANI

CORFAC INTERNATIONAL



FOR LEASE

1,135 SQUARE FEET

STERLING HEIGHTS, MICHIGAN

FOR MORE INFORMATION:

Al Iafrate, SIOR

248.637.7791

aiafrate@Lmcap.com

Anton Juncaj

248.637.3529

ajuncaj@Lmcap.com

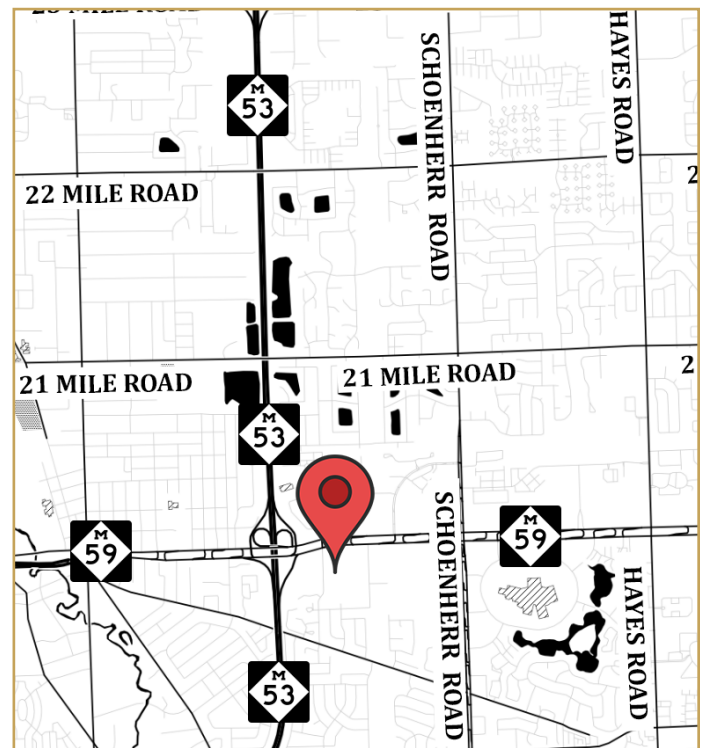
PROPERTY FEATURES:

- Adjacent to Henry Ford Rehabilitation Services
- Close Proximity to Henry Ford Hospital
- Seconds from M-53
- Excellent Access from Hall Road

CONNECT WITH US:



facebook.com/L.MasonCapitaniInc.CORFACInternational
linkedin.com/company/l-mason-capitani-inc
twitter.com/LMasonCapitani



248.637.9700 | www.Lmcap.com



CORFAC INTERNATIONAL

2301 West Big Beaver
Suite 950
Troy, MI 48084-3329

(248) 637-9700
Facsimile (248) 637-9897
www.Lmcap.com

PROPERTY INFORMATION



PROPERTY NAME: Lowell Park

LOCATION: 44700 Delco Blvd

CITY: Sterling Heights

COUNTY: Macomb

PROPERTY TYPE: Medical/Office

YEAR BUILT: 1985

LOCATION DESCRIPTION: Hall Road/Delco

GROSS SF: 12,000

AVAILABLE SF: 1,135

MAX. AVAILABLE: 1,135

MIN. AVAILABLE: 1,135

FLOORS: 1

PARKING:

ZONING: O-1

PROPERTY DESCRIPTION: For lease, 1,135 square foot suite adjacent to Henry Ford Rehabilitation Services. Seconds from M-53. Excellent access to Hall Road.

ECONOMIC DATA

MIN RENTAL RATE: \$16.50

MAX RENTAL RATE: \$16.50

OPERATING EXPENSES:

ANNUAL ESCALATIONS: \$0.50

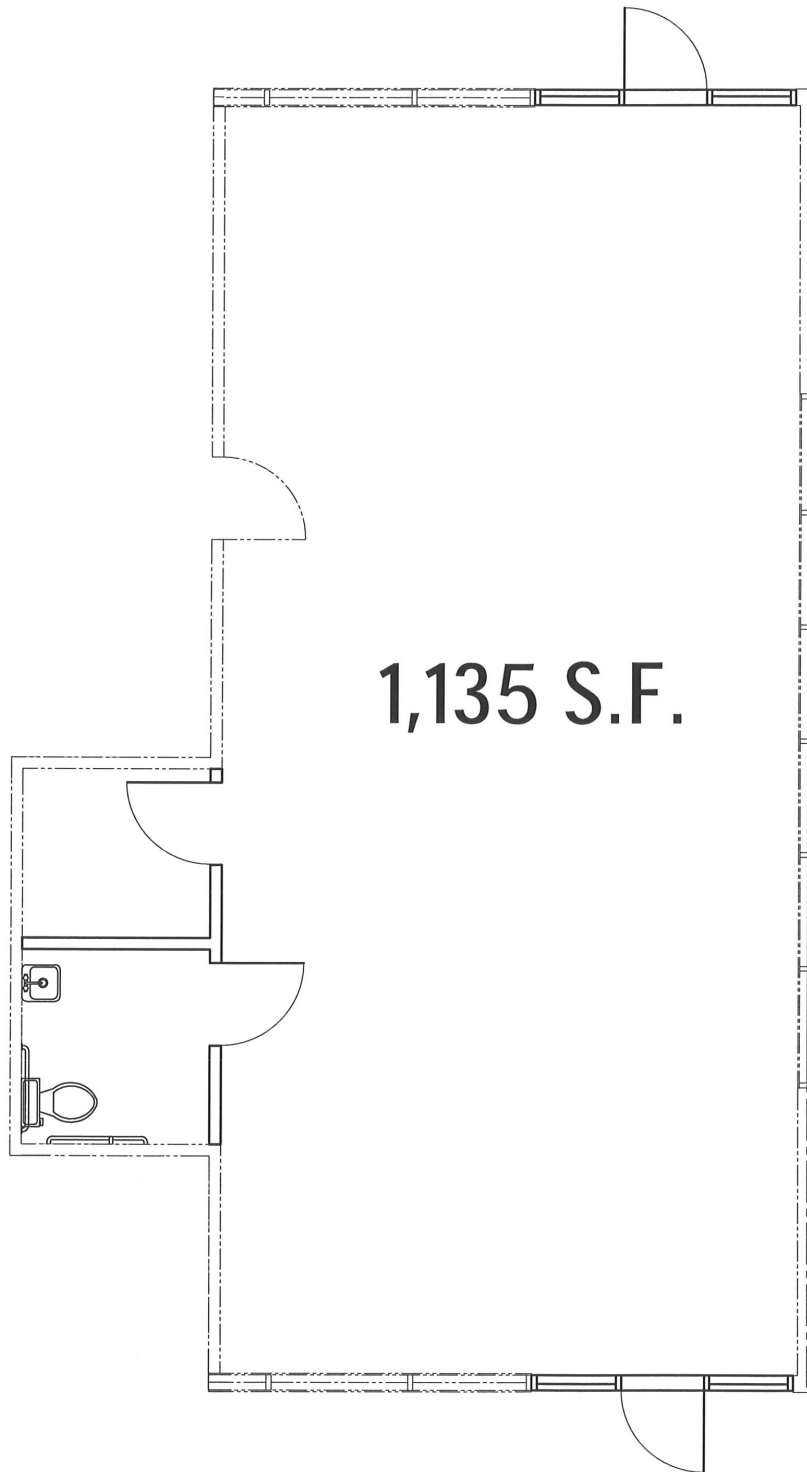
TERMS: Gross+Utilities

LOAD FACTOR:

PARTITION ALLOWANCE: Negotiable

SALE PRICE:

AGENT: A. Iafrate\ A. Juncaj



L. MASON CAPITANI

CORFAC INTERNATIONAL

2301 West Big Beaver Road, Suite 950
Troy, Michigan 48084

www.Lmcap.com

For More Information, Contact:

Al Iafrate, SIOR
aiafrate@Lmcap.com
248.637.7791

Anton Juncaj
ajuncaj@Lmcap.com
248.637.3529

Floor Plan

44700 Delco Blvd
Sterling Heights, MI

1,135 SQ FT

(Drawing Not to Scale)