

FOR SALE

FOUNDERS BLDG

625-35 E WISTER ST, PHILADELPHIA, PA 19138



PROPERTY DETAILS

Asking Price	\$613,000
Current Use	Office / Classroom
Size	17,280 SF
Stories	3
Built/Renov	1904 / 1963 / 2007
Zoning	RSA-1 Residential Single-Family Attached

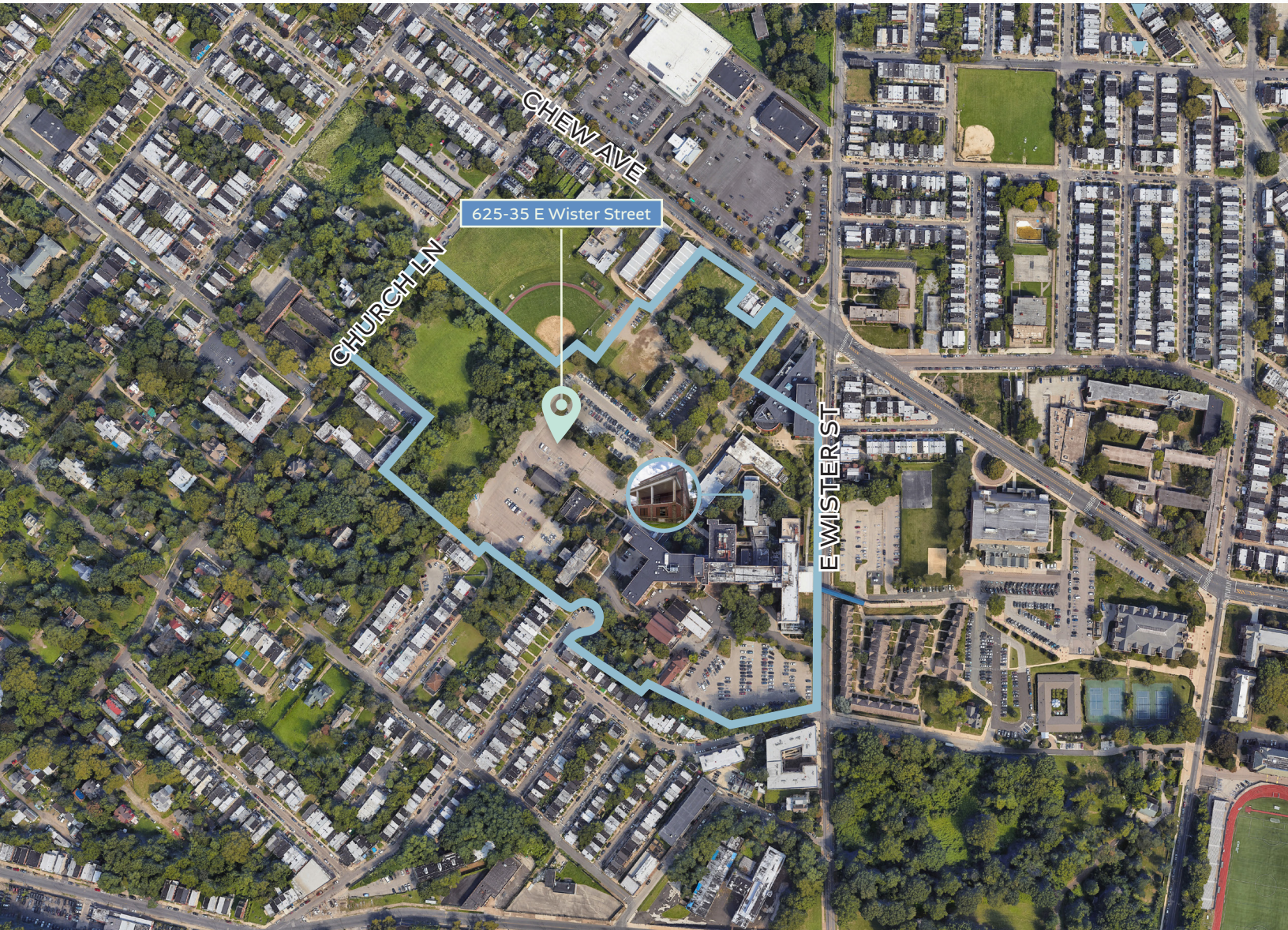
PROPERTY HIGHLIGHTS

- Property is currently vacant. Previously used for office and classroom
- May be purchased together with the adjacent Medical Office Bldg of 44,240 SF building should a user or investor require additional square footage
- Zoning (RSA-1) also allows for residential use. Ideal use may be associated with the Behavioral Health industry.
- Building benefits from immediate proximity to La Salle University and Willow Terrace Rehabilitation (former Germantown Medical Center)
- Building is part of UNIT 1 of the West Campus Condominium

NEWMARK

FOUNDERS BLDG

625-35 E WISTER ST, PHILADELPHIA, PA 19138



NEWMARK

PHILADELPHIA
2005 Market Street
Suite 900
Philadelphia, PA 19103
t 215-561-8300

NMRK.COM

Licensed in Pennsylvania as Newmark Real Estate

The information contained herein has been obtained from sources deemed reliable but has not been verified and no guarantee, warranty or representation, either express or implied, is made with respect to such information. Terms of sale and availability are subject to change or withdrawal without notice.

DAVE DOLAN

Senior Managing Director
t 215-246-2738
m 609-206-1116
david.dolan@nmrk.com

ANGELO BRUTICO

Associate
t 267-606-0697
m 610-716-7801
angelo.brutico@nmrk.com