

FOR LEASE
330 Square Foot Office

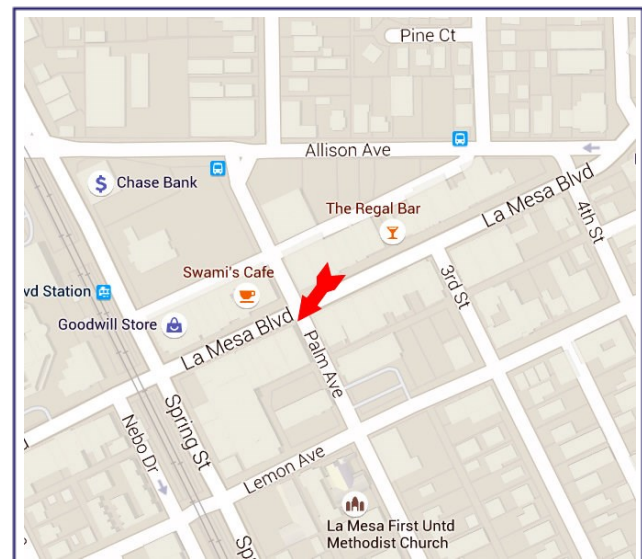
4730 Palm Avenue
La Mesa, CA 91941



Historic Heller Building - La Mesa Village

FEATURES:

- ◆ Small 2nd story offices - See Floor Plan
- ◆ Hardwood floors, LED lighting, and exterior windows that open
- ◆ Large waiting area for clients that is being remodeled to 1930's period.
- ◆ High speed internet with Cox and AT&T at building
- ◆ Plentiful public parking in the rear of building
- ◆ In the heart of La Mesa Village with numerous restaurants, shops, and events like Oktoberfest
- ◆ Streetscape with lighting, trees, benches, etc.
- ◆ Close to trolley/bus stop
- ◆ Next to new Village sign
- ◆ \$1,200 / month + utilities



SDCRE

San Diego Commercial Real Estate

BRE #01322469

8200 Allison Ave. La Mesa, CA 91942

www.SanDiegoCRE.com

For more information please contact:

Mark Robak

BRE #01024745

Call/Text 619-778-3800

Mark@SanDiegoCRE.com

This information above was furnished by the owner or obtained from information we understand was authorized by the owner. No warranties or representations, expressed or implied, are made as to the accuracy of the information contained herein, and same is submitted subject to errors, omissions, change of price, rental or other conditions, withdrawal without notice, and to any special listing conditions imposed by our principals. This information is given with the understanding that all negotiations relating to the leasing of the property described herein shall be conducted through SDCRE.



Doors to suite



View to windows on Palm Avenue



View to doors



Main entry from Palm Avenue



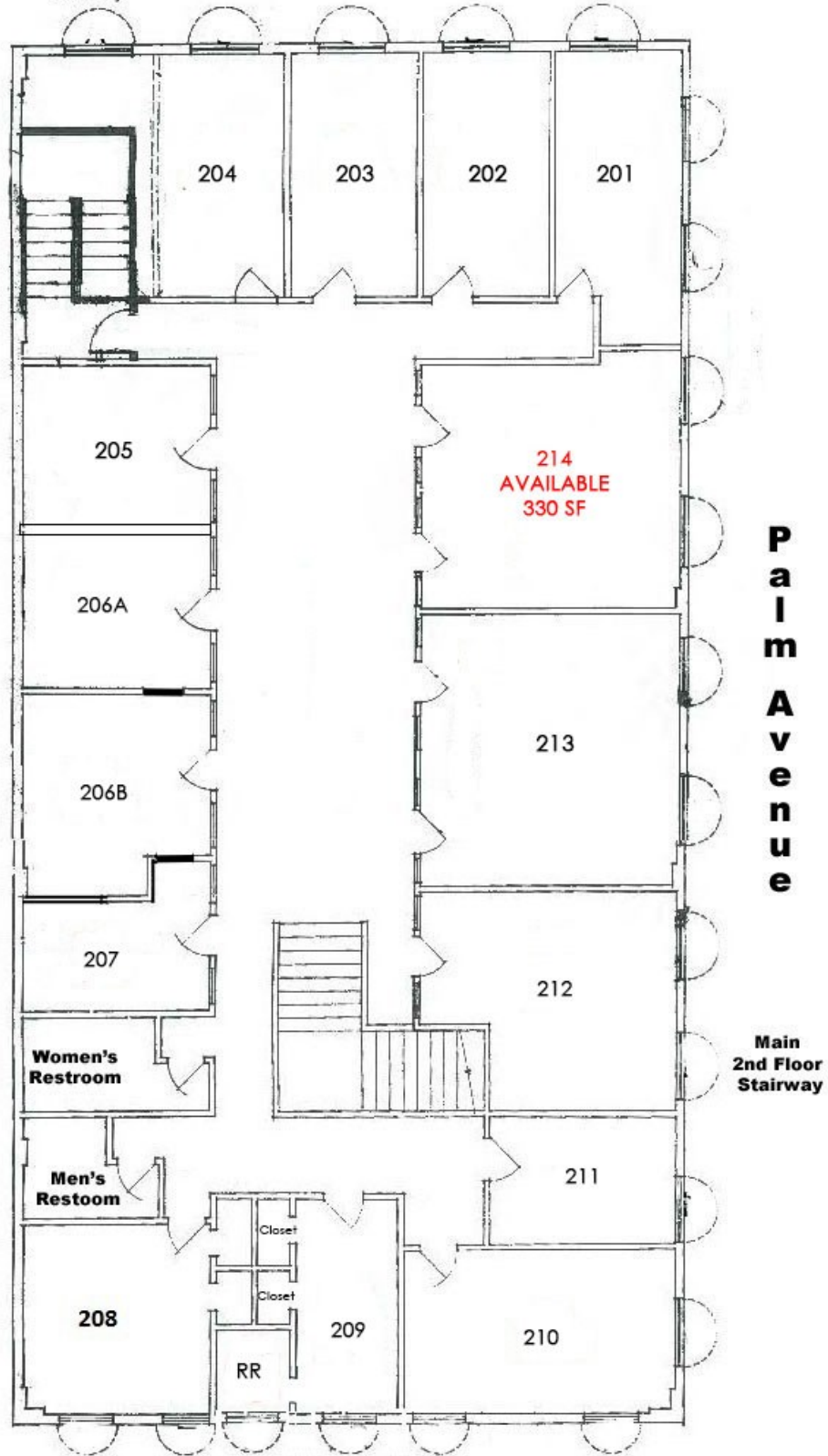
Lobby area for clients



Rear parking lot

Alternate
2nd Floor
Stairway

La Mesa Blvd



**P
a
l
m
A
v
e
n
u
e**

**Main
2nd Floor
Stairway**

Second Floor

Floor Plan