

# 4 Northeastern Blvd

Salem, NH



**For Lease**  
**52,500 sq ft**  
**First Class Office Space**

Located in Southern New Hampshire at Exit #2 off Interstate 93. Four Northeastern Blvd is a 52,500 square foot 3-story office building.

This attractive masonry facade with floor to ceiling glass walls has pleasant views of the beautiful landscape. This exceptionally maintained building has great access to Interstate 93 North and South.

Just 30 minutes to Boston and only 20 minutes to Manchester.

For further information, please call our main office or visit our website.

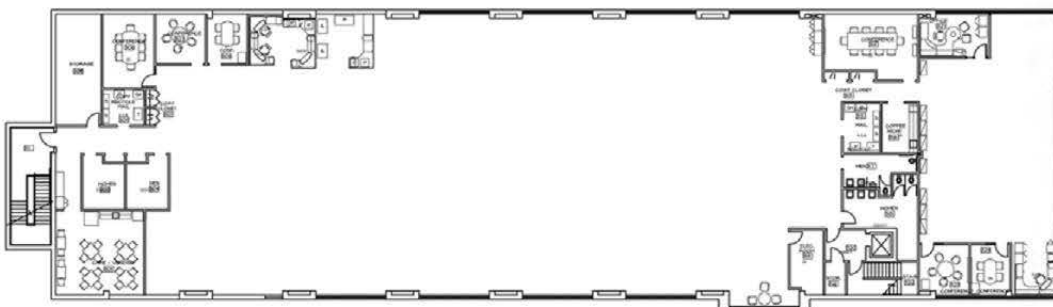
(603) 894.1104  
[www.BrooksProperties.com](http://www.BrooksProperties.com)

# Building Specifications

Land:	7 Acres
Zoning:	Commercial/Industrial B
Building Size:	52,500 Sq Ft
Year Built:	1995, Renovated 2014
Type:	Structural Steel w/EIFS Exterior
Parking:	5.7 per 1,000
Ceiling Height:	8'0"
Sprinkled:	Yes
Electrical Service:	2000 Amp 277/480 3p 4w 575KW generator Backup
HVAC:	EVAPCO Heat Pump/Cooling Tower System
Type Fuel:	Natural Gas
Utilities:	Municipal



# Sample Floor Plan



9 Red Roof Lane  
Salem, NH 03079  
(603) 894-1104

[www.BrooksProperties.com](http://www.BrooksProperties.com)