



VACANT LAND: ZONED FOR ASSISTED LIVING

0 Bear Swamp Road
Johns Island, SC 29455

Kip Bowman | Principal | kipbowman@gmail.com
Sara Bodell | Associate | sbodell@cbcatlantic.com



**COLDWELL BANKER
COMMERCIAL
ATLANTIC**



ADDRESS

0 Bear Swamp Road
Johns Island, SC 29455



PRICE

\$315,000



LOT SIZE

2.3 Acres



ZONING

PD



COUNTY

Charleston County



TAX ID

286-00-00-043

PROPERTY OVERVIEW

This 2.3-acre parcel is situated near the intersection of Bees Ferry Rd and Savannah Highway in West Ashley. The site is within the Planned Development area for Hunt Club, with multi-family access just to the north along Bear Swamp Rd. The property has been approved for an Assisted Living facility. Nearby developments include Toll Brothers along the Bees Ferry extension, 8 acres of retail space at the intersection of Bees Ferry Rd and Savannah Highway, a large-scale multi-family project along Savannah Highway between Bees Ferry Rd and Publix, and Long Savannah, a 3,300-acre planned community with proposed access via Bear Swamp Rd.



AREA MAP

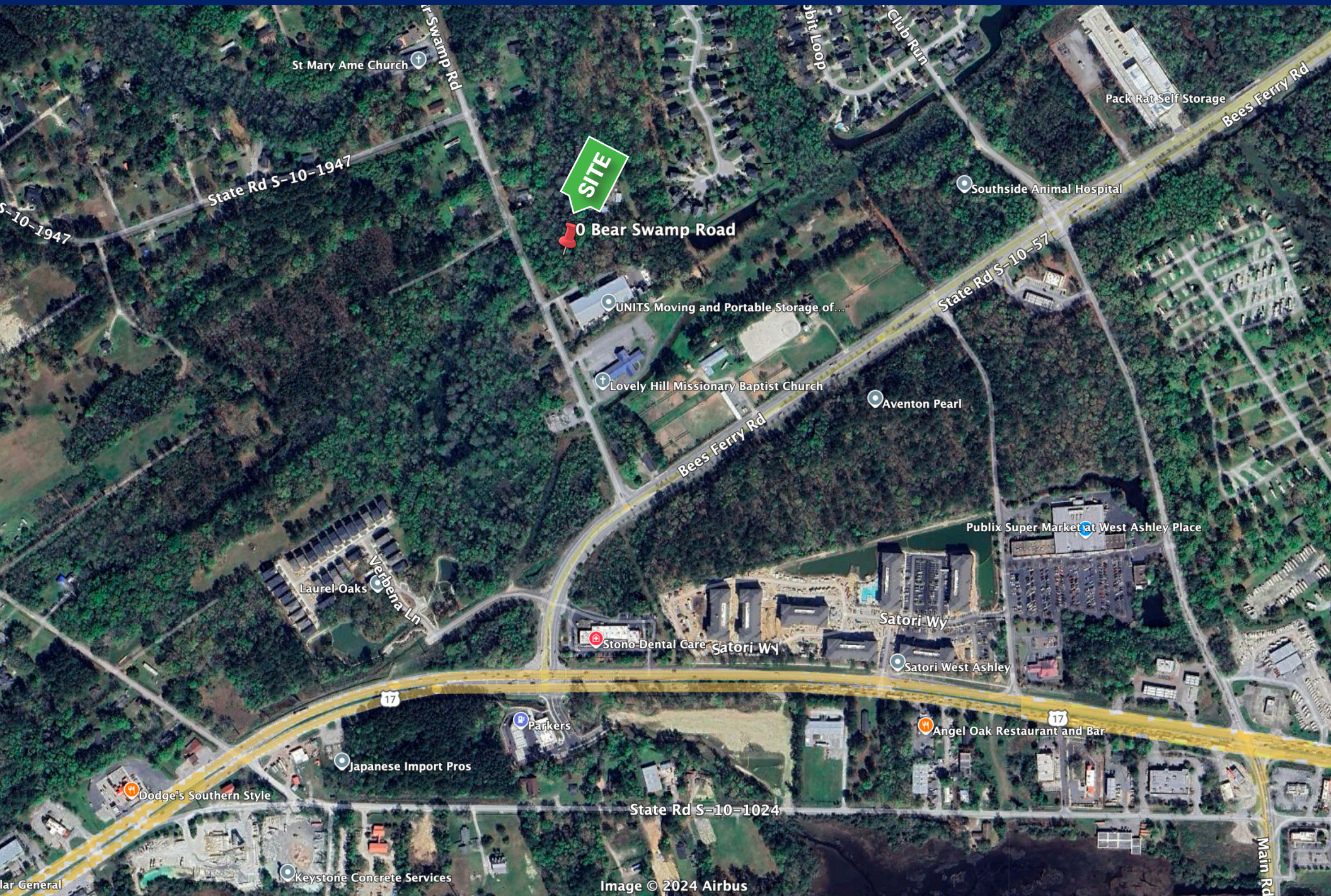
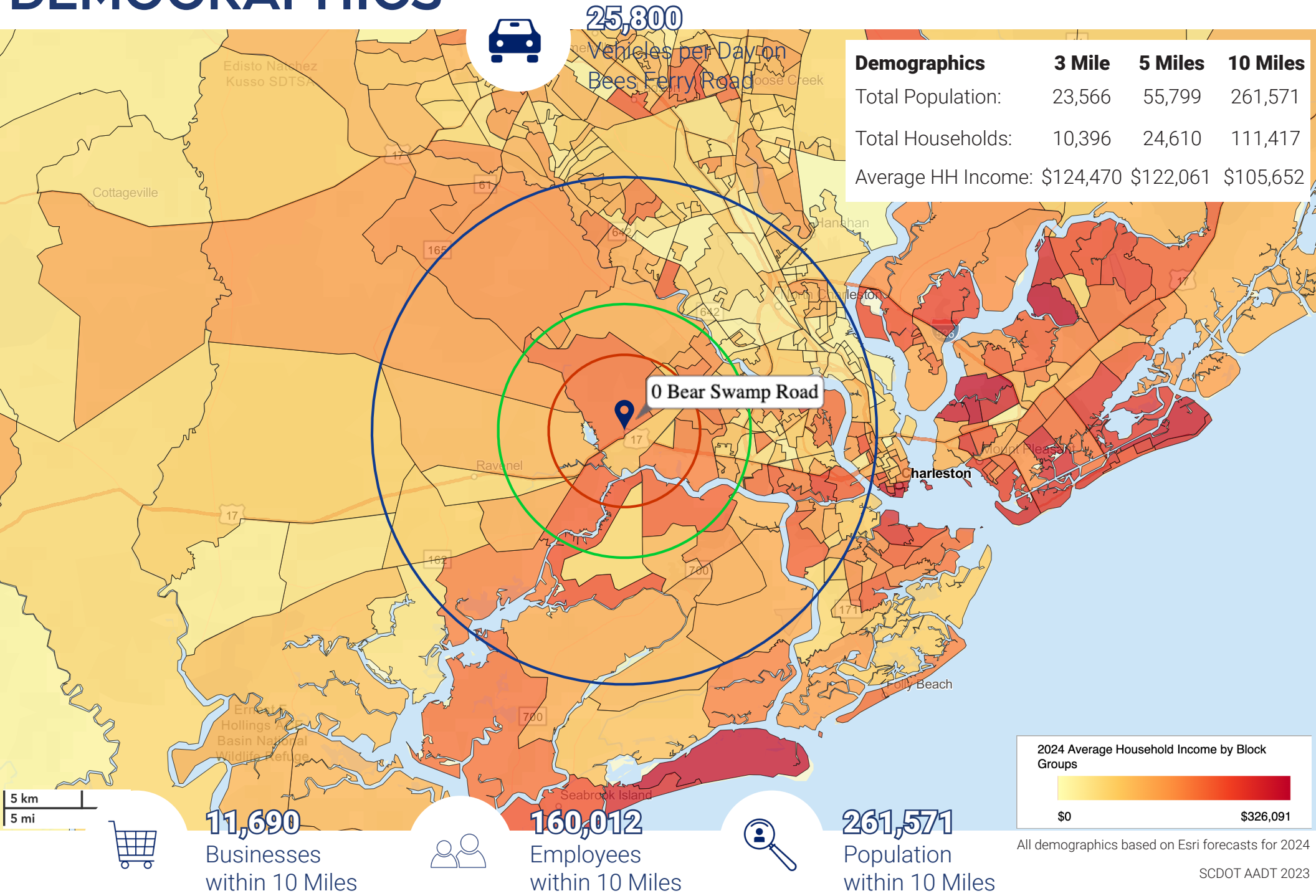


Image © 2024 Airbus

DEMOGRAPHICS



Kip Bowman
Principal
(C) 843.437.0074
kipbowman@gmail.com

Sara Bodell
(C) 864.903.2731
sbodell@cbcatlantic.com



COLDWELL BANKER
COMMERCIAL
ATLANTIC

3506 W Montague Ave Suite 200
North Charleston, SC 29418
843.744.9877
cbcatlantic.com | cbcretailatlantic.com

This information has been obtained from sources believed reliable but has not been verified for accuracy or completeness. Coldwell Banker Commercial Atlantic makes no guarantee, representation or warranty and accepts no responsibility or liability as to the accuracy, completeness, or reliability of the information contained herein. You should conduct a careful, independent investigation of the property and verify all information. Any reliance on this information is solely at your own risk.

The information contained herein should be considered confidential and remains the sole property of Coldwell Banker Commercial Atlantic at all times. Although every effort has been made to ensure accuracy, no liability will be accepted for any errors or omissions. Disclosure of any information contained herein is prohibited except with the express written permission of Coldwell Banker Commercial Atlantic.