

Orpheum
Building

FOR LEASE



1182
MARKET

Office Suites
Available

+/- 948 - 6,028
SQFT OF
OFFICE SUITES

Scan Me!



Jake Levinson

415.786.4303
jake@groundmatrix.com
CalDRE #02021931

Alex Fee

209.981.7753
alex@groundmatrix.com
CalDRE #02018515

Jerry Adamson

707.570.7802
jerry@groundmatrix.com
CalDRE #01935945



OFFICE | INDUSTRIAL | RETAIL
TEAM

1182

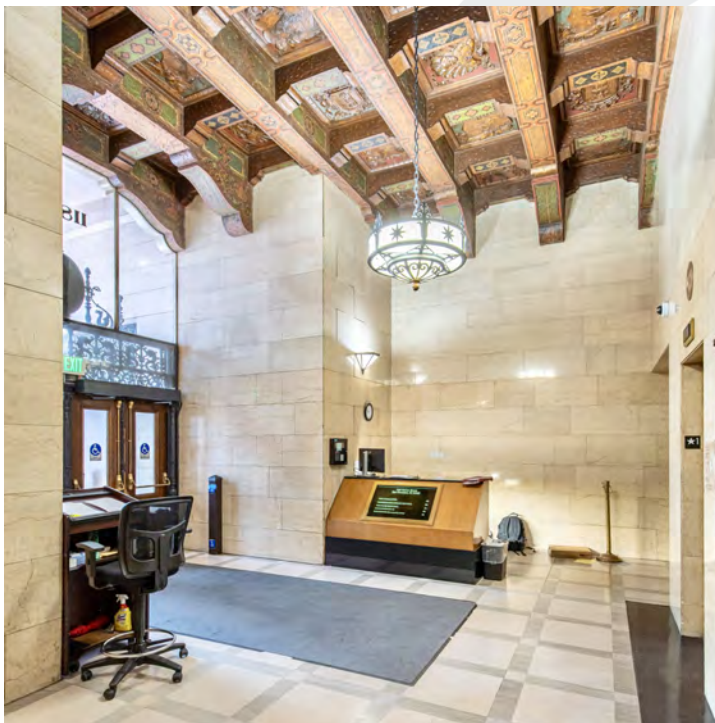
ORPHEUM BUILDING
MARKET STREET
San Francisco, CA 94102



GROUND MATRIX

FOR LEASE | OFFICE BUILDING

Property Summary



PROPERTY DESCRIPTION

The Orpheum Theatre, originally the Pantages Theatre, is located at 1182 Market at Hyde, Grove, and 8th Streets in the Civic Center district of San Francisco, California. The theatre first opened in 1926 as one of the many designed by architect B. Marcus Priteca for theater-circuit owner Alexander Pantages. The interior features a vaulted ceiling, while the facade is an original San Francisco Spanish Gothic Revival.

The building is also home to a premiere boutique office suite community. The new owners are curating a welcoming, secure and distinguished professional atmosphere for their tenants.

OFFERING SUMMARY

Lease Rate:	\$24.00 SF/yr (Full Service)
Available SF:	948 - 6,028 SF
Zoning:	C-3-G

Jake Levinson

415.786.4303
jake@groundmatrix.com
CalDRE #02021931

Alex Fee

209.981.7753
alex@groundmatrix.com
CalDRE #02018515

Jerry Adamson

707.570.7802
jerry@groundmatrix.com
CalDRE #01935945

FOR LEASE | OFFICE BUILDING

Property Summary

**AVAILABILITY**

The Orpheum Building has an array of options for lease. The suites available come with different amenities and layouts, but the landlord is amenable to buildout/contributing TI to any specific requests.

SPACES	LEASE RATE	SPACE SIZE
Suite 318	\$24.00 SF/yr	1,864 SF
Suite 425	\$24.00 SF/yr	6,028 SF
302	\$24.00 SF/yr	964 SF
312	\$24.00 SF/yr	948 SF

**Jake Levinson**

415.786.4303
jake@groundmatrix.com
CalDRE #02021931

Alex Fee

209.981.7753
alex@groundmatrix.com
CalDRE #02018515

Jerry Adamson

707.570.7802
jerry@groundmatrix.com
CalDRE #01935945

1182

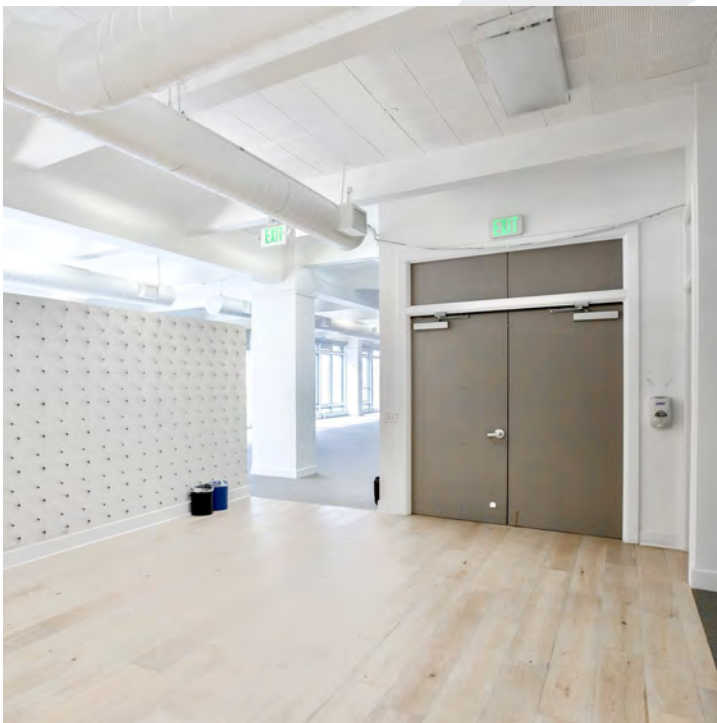
ORPHEUM BUILDING
MARKET STREET
San Francisco, CA 94102



GROUND MATRIX

FOR LEASE | OFFICE BUILDING

Additional Photos



Jake Levinson

415.786.4303
jake@groundmatrix.com
CalDRE #02021931

Alex Fee

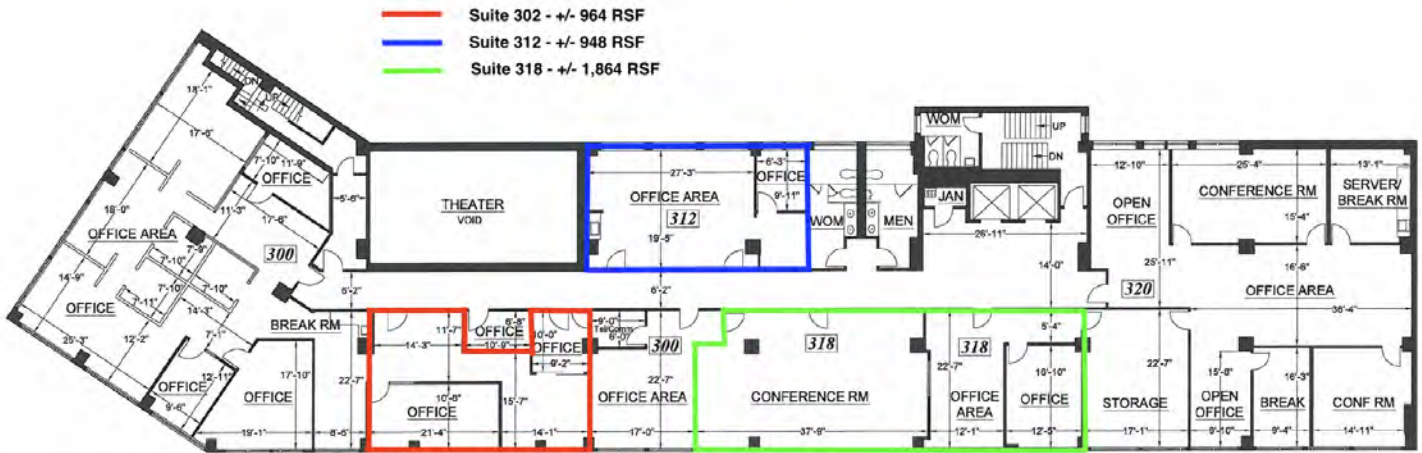
209.981.7753
alex@groundmatrix.com
CalDRE #02018515

Jerry Adamson

707.570.7802
jerry@groundmatrix.com
CalDRE #01935945

FOR LEASE | OFFICE BUILDING

Additional Photos



3rd Floor



4th Floor

Jake Levinson

415.786.4303
jake@groundmatrix.com
CalDRE #02021931

Alex Fee

209.981.7753
alex@groundmatrix.com
CalDRE #02018515

Jerry Adamson

707.570.7802
jerry@groundmatrix.com
CalDRE #01935945

1182

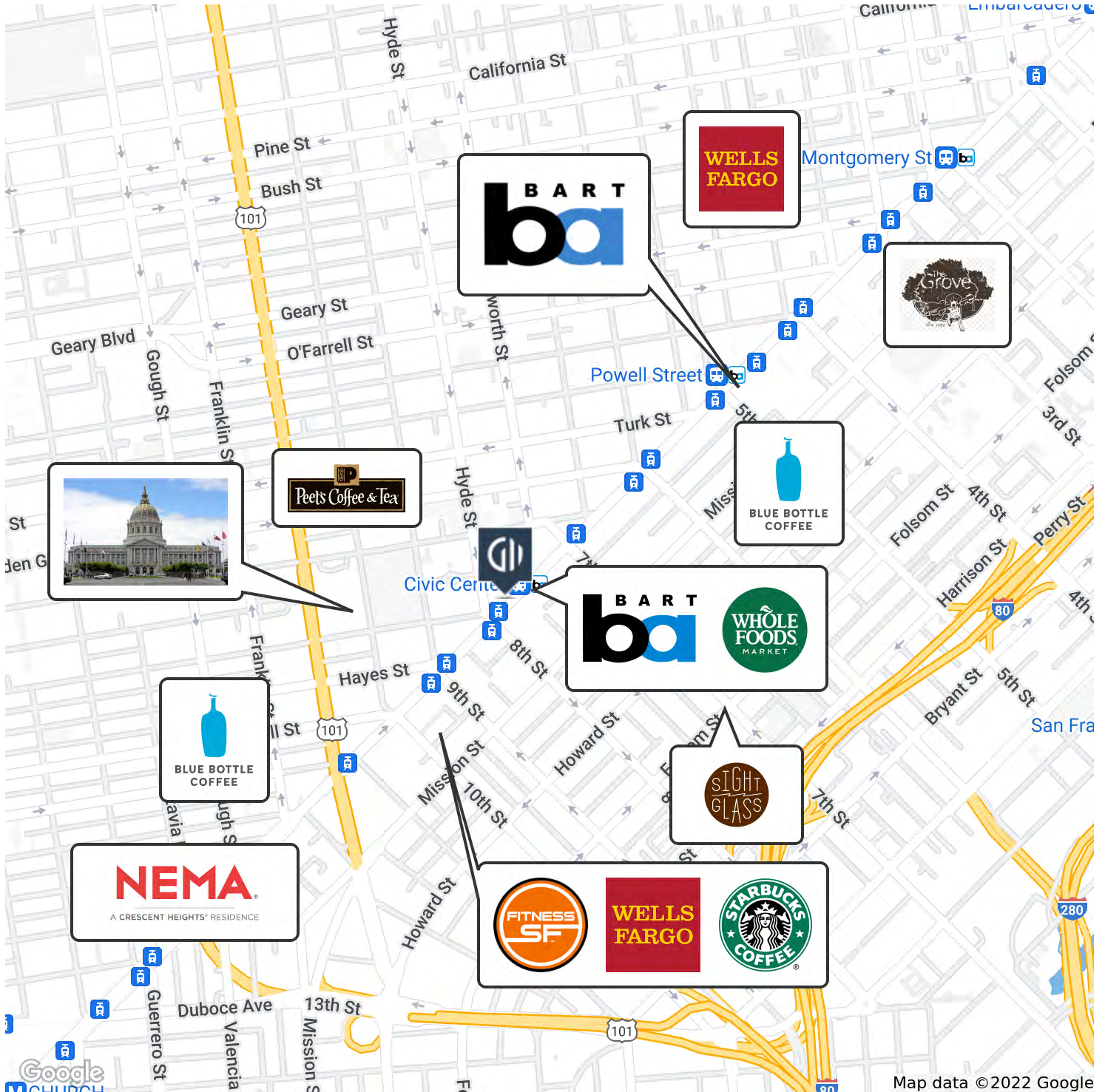
ORPHEUM BUILDING
MARKET STREET
San Francisco, CA 94102



GROUND MATRIX

FOR LEASE | OFFICE BUILDING

Retailer Map



Map data ©2022 Google

Jake Levinson

415.786.4303
jake@groundmatrix.com
CalDRE #02021931

Alex Fee

209.981.7753
alex@groundmatrix.com
CalDRE #02018515

Jerry Adamson

707.570.7802
jerry@groundmatrix.com
CalDRE #01935945