

# OFFICE & RETAIL SUITES FOR LEASE

## PENDER'S PLACE

1230 W 25<sup>th</sup> Street, Norfolk, VA 23508



### ABOUT PROPERTY

- New Development in the Rail Yard corridor in Norfolk
- Ideal for small office and professional retail services
- Individual suite size ranging from 686 – 774 square feet
  - Contiguous units can be combined, up to ~4,400 square feet
- Parking on Site
- Units to be delivered move-in ready with brand new finishes.
  - New HVAC & Lighting
  - Polished Concrete Floors
  - Restroom
- Flexible term length available
- Available Q2 2025
- Asking Rent: \$1,550-\$1,700 / month, net utilities

#### FOR MORE INFORMATION:

**RYAN KING**

757.640.8210

[RyanKing@HarveyLindsay.com](mailto:RyanKing@HarveyLindsay.com)

**ANDY STEIN**

757.640.9463

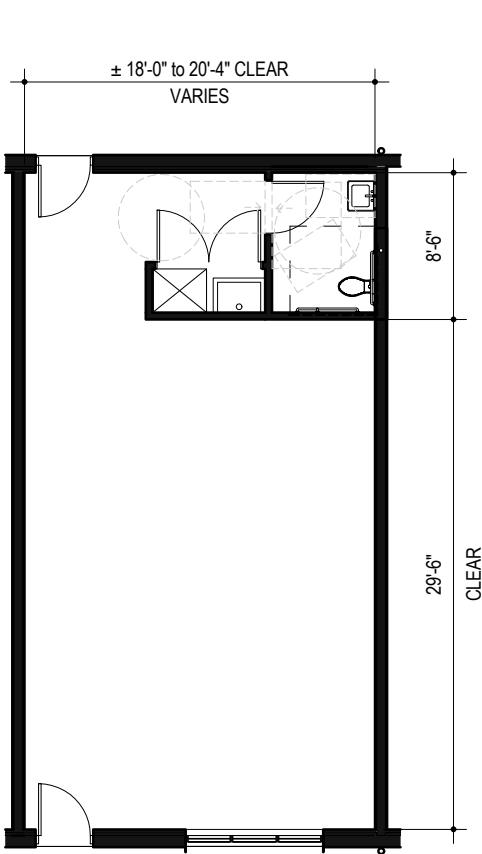
[AndyStein@HarveyLindsay.com](mailto:AndyStein@HarveyLindsay.com)

**HARVEY LINDSAY**

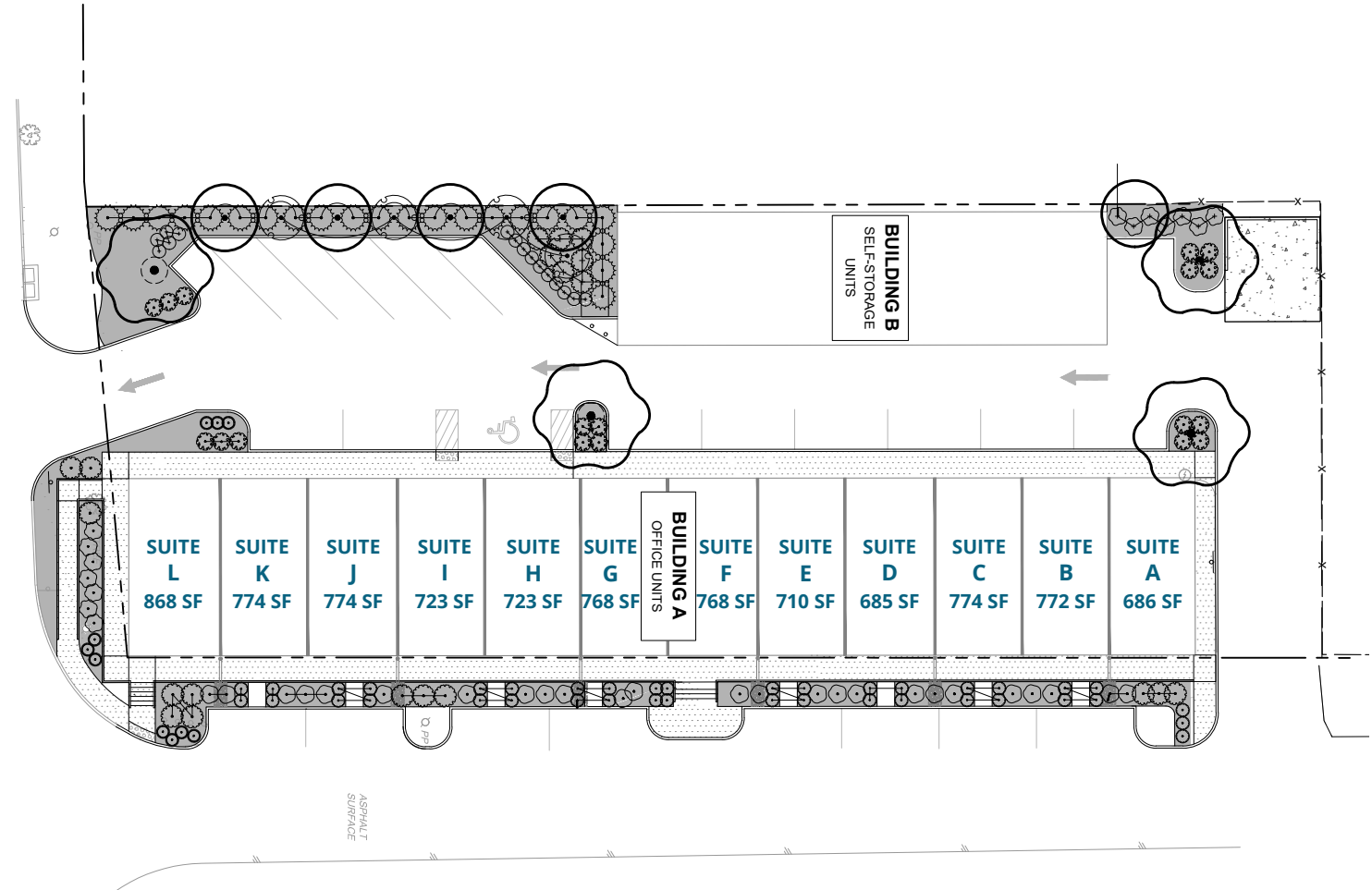
COMMERCIAL REAL ESTATE

# UNIT & SITE PLAN

PENDER'S PLACE - 1230 W 25<sup>th</sup> Street, Norfolk, VA



EXAMPLE UNIT



SITE PLAN

**FOR MORE INFORMATION:**

**RYAN KING**

757.640.8210

RyanKing@HarveyLindsay.com

**ANDY STEIN**

757.640.9463

AndyStein@HarveyLindsay.com

**HARVEY LINDSAY**

COMMERCIAL REAL ESTATE

# CONCEPT RENDERINGS

PENDER'S PLACE - 1230 W 25<sup>th</sup> Street, Norfolk, VA



## FOR MORE INFORMATION:

**RYAN KING**

757.640.8210

[RyanKing@HarveyLindsay.com](mailto:RyanKing@HarveyLindsay.com)

**ANDY STEIN**

757.640.9463

[AndyStein@HarveyLindsay.com](mailto:AndyStein@HarveyLindsay.com)

**HARVEY LINDSAY**

COMMERCIAL REAL ESTATE

# IMMEDIATE AERIAL VIEW

PENDER'S PLACE - 1230 W 25<sup>th</sup> Street, Norfolk, VA



## FOR MORE INFORMATION:

**RYAN KING**

757.640.8210

RyanKing@HarveyLindsay.com

**ANDY STEIN**

757.640.9463

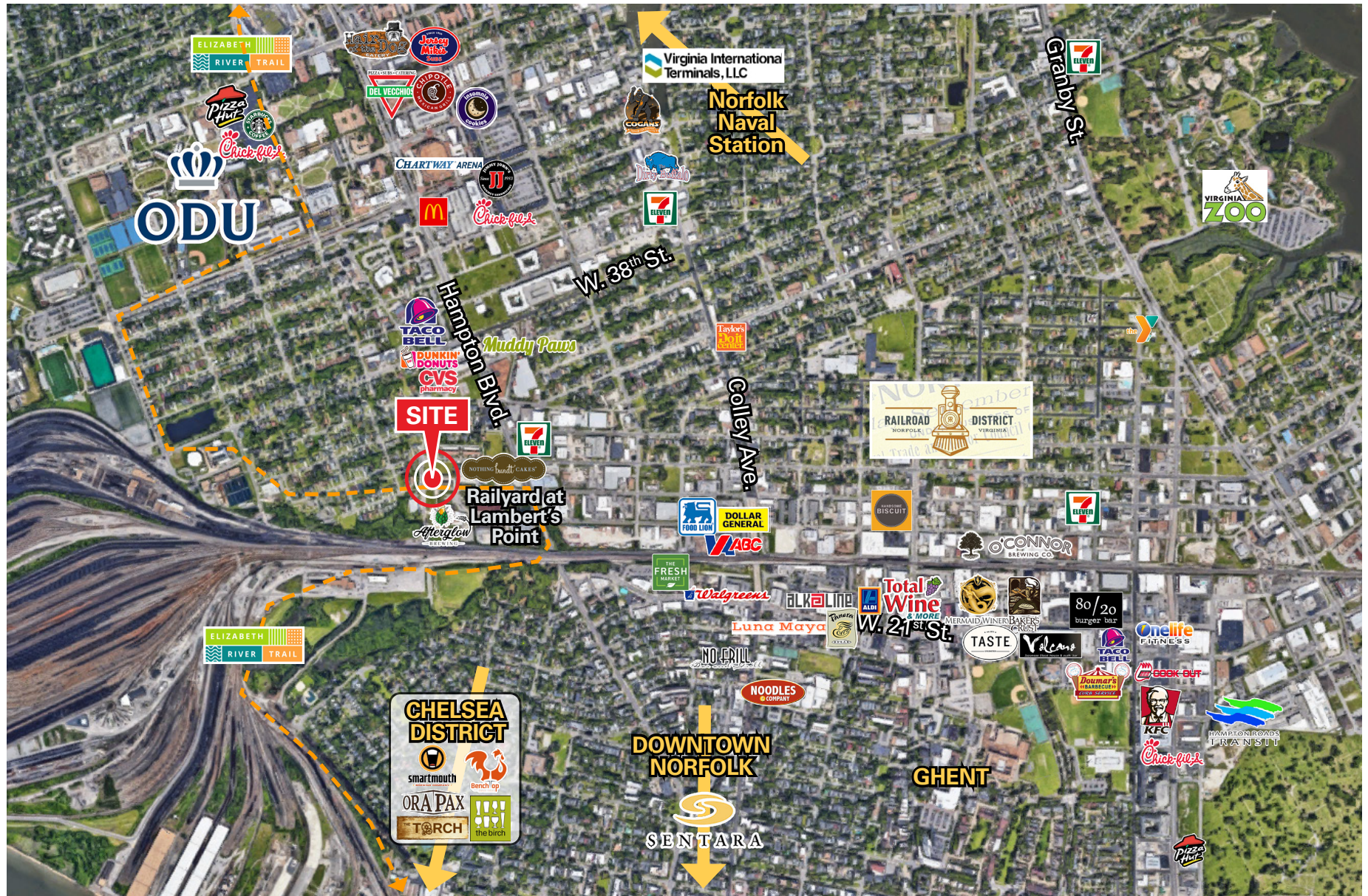
AndyStein@HarveyLindsay.com

**HARVEY LINDSAY**

COMMERCIAL REAL ESTATE

# SURROUNDING AERIAL VIEW

PENDER'S PLACE - 1230 W 25<sup>th</sup> Street, Norfolk, VA



**FOR MORE INFORMATION:**

**RYAN KING**

757.640.8210

RyanKing@HarveyLindsay.com

**ANDY STEIN**

757.640.9463

AndyStein@HarveyLindsay.com

**HARVEY LINDSAY**

COMMERCIAL REAL ESTATE

# NORFOLK INNOVATION CORRIDOR

PENDER'S PLACE - 1230 W 25<sup>th</sup> Street, Norfolk, VA



**FOR MORE INFORMATION:**

**RYAN KING**  
 757.640.8210  
 RyanKing@HarveyLindsay.com

**ANDY STEIN**  
 757.640.9463  
 AndyStein@HarveyLindsay.com

**HARVEY LINDSAY**  
 COMMERCIAL REAL ESTATE