

# CORNELL STREET OFFICE

1149 CORNELL STREET SUITE 3B



\$27 psf MG

## Leasing Opportunity

- 1,196-2,393 SF available
- Centrally located with direct access to parking
- Modified Gross lease
- 3-5 year term preferred
- Current layout includes Private offices and a shared reception area
- Close proximity to Oglethorpe Mall, several medical offices, Abercorn Street, and the Truman Parkway

For more information, please contact:



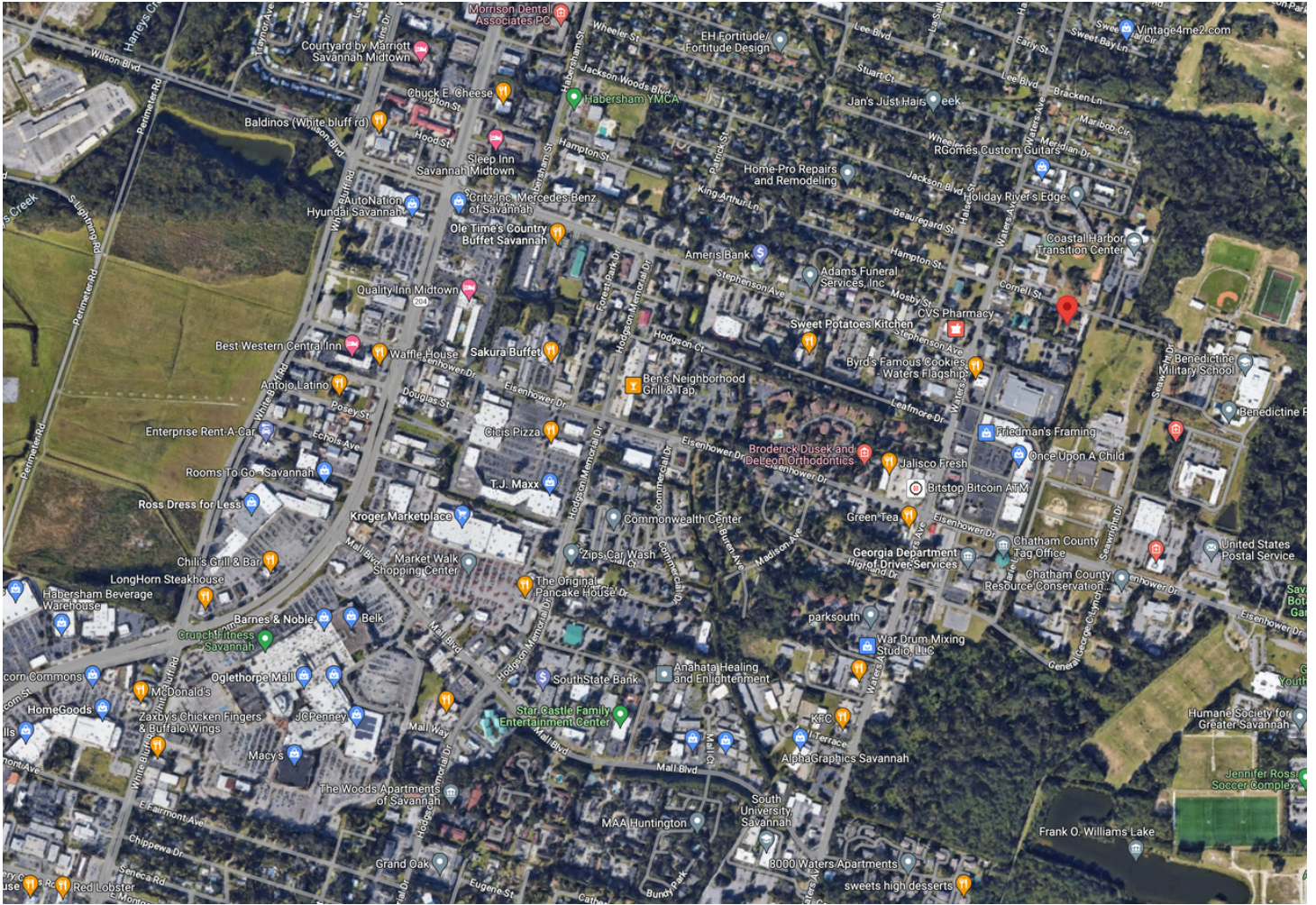
**Mandy Henderson**

Sales Director  
cell: 970-778-5616  
mandy@judgerealty.com



# AERIAL VIEW

1149 CORNELL STREET 3B



## Surrounding Demographics

**395,983**  
POPULATION



**142,788**  
HOUSEHOLDS



**5TH**  
**LARGEST**  
COUNTY IN GEORGIA



**\$59,459**  
AVERAGE HOUSEHOLD  
INCOME









PHOTOS  
1149 CORNELL STREET

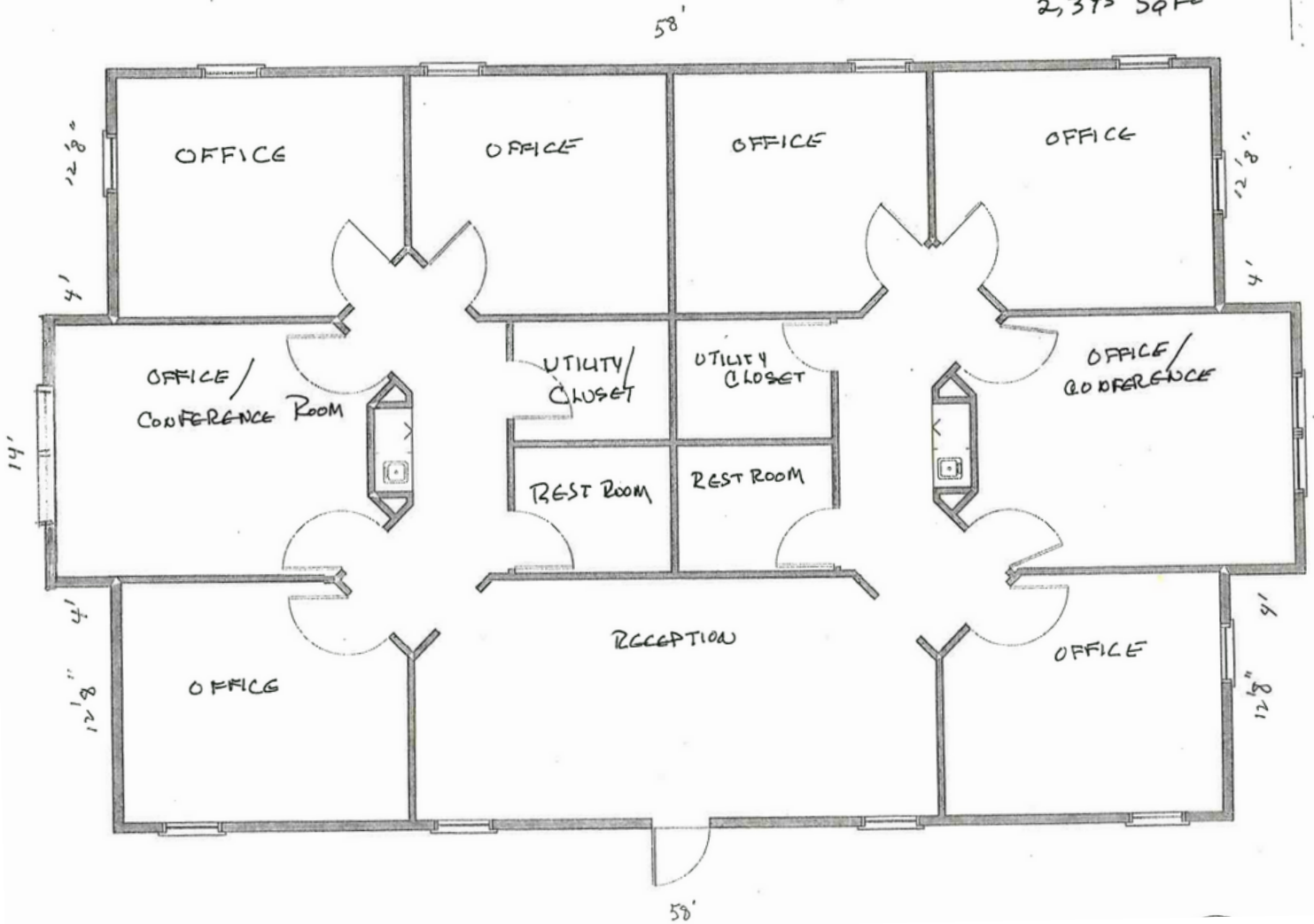




# FLOOR PLANS

1149 CORNELL STREET 3B

SECOND FLOOR BLDG No. 3  
2,393 SQ FT







## About Judge Realty

Judge Realty is the leader in Savannah Commercial Real Estate. We manage and lease over 500 properties in the Savannah area and work with local and national clients across the USA.

COMMERCIAL

RESIDENTIAL

PROPERTY MANAGEMENT

DEVELOPMENT



345 Abercorn St.,  
Savannah, GA 31401



912-236-1000



info@judgerealty.com



judgerealty.com