

FOR SALE | DEVELOPMENT LAND

67 Lisbon Street | Lisbon, ME



TWO DEVELOPMENT PARCELS

- Two 1± AC lots for development next to Blackbear Ladder in Lisbon
- Highly visible location on Lisbon Street
- Zoning allows for many commercial uses

SALE PRICE: \$190,000



CHERI BONAWITZ, CCIM
207.210.6638 D
207.240.6844 C
cheri@malonecb.com



KAREN RICH
207.210.6637 D
207.671.8808 C
karen@malonecb.com

MALONE COMMERCIAL BROKERS
5 Moulton Street • Suite 3
Portland, ME 04101
207.772.2422 • malonecb.com

PROPERTY SUMMARY

67 Lisbon Street | Lisbon, ME



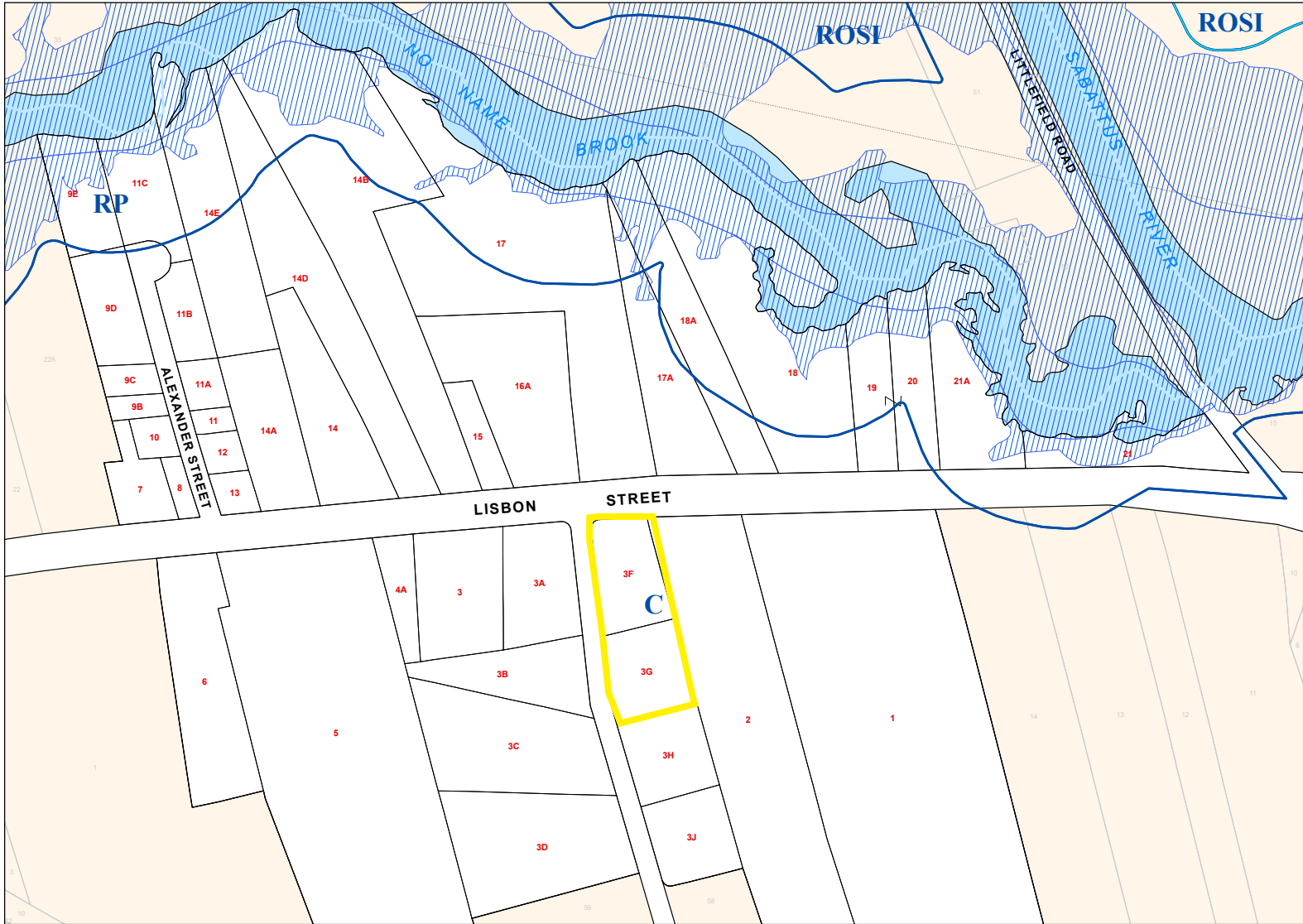
OWNER: S.D. Martin Enterprises, LLC

LOT SIZE: Block G: 1± AC
Block F: 1± AC

DEED: Book 5881 & 4599, Page 96 & 284

ZONING: Commercial

ASSESSOR: Map U23, Block G & F, Lot 3



This document has been prepared by Malone Commercial Brokers for advertising and general information only. Malone Commercial Brokers makes no guarantees, representations or warranties of any kind, expressed or implied, regarding, but not limited to, warranties of content, accuracy, and reliability. Any interested party should undertake their own inquiries as to the accuracy of the information. Malone Commercial Brokers excludes unequivocally all informed or implied terms, conditions and warranties arising out of this document and excludes all liability for loss and damages there from. All data is subject to change of price, error, omissions, other conditions or withdrawal without notice. Malone Commercial Brokers is acting as the Seller's/Lessor's agent in the marketing of this property.



CHERI BONAWITZ, CCIM
207.210.6638 D
207.240.6844 C
cheri@malonecb.com



KAREN RICH
207.210.6637 D
207.671.8808 C
karen@malonecb.com

MALONE COMMERCIAL BROKERS
5 Moulton Street • Suite 3
Portland, ME 04101
207.772.2422 • malonecb.com