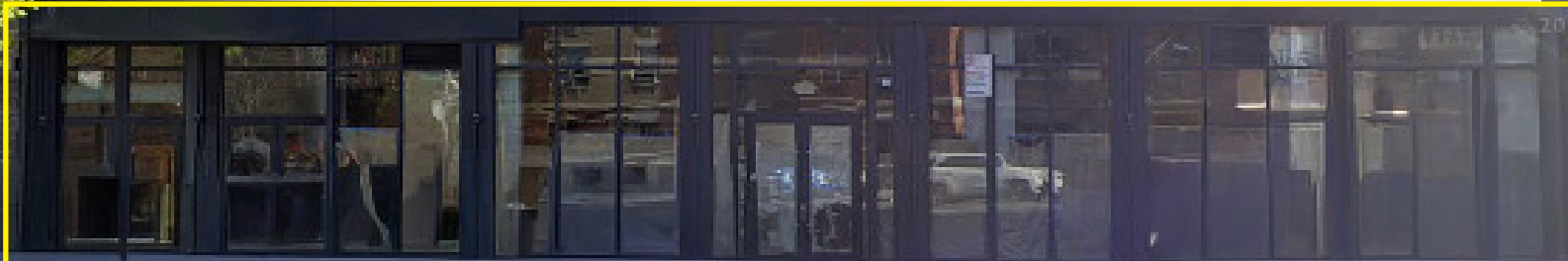


# 11 HANCOCK PLACE

BETWEEN ST NICHOLAS & MORNINGSIDE AVENUES | HARLEM

Opening  
Soon!

**FITNESS  
FACTORY**  
HEALTH CLUB



# 11 HANCOCK PLACE

BETWEEN ST NICHOLAS & MORNINGSIDE AVENUES | HARLEM

## PROPERTY HIGHLIGHTS:

- Sublease through 5/28/2037
- Join Fitness Factory in the building
- Great for retail, daycares, and medical.
- Can be combined with an additional 2,000 square feet through 125th street retail

SIZE: 5,500 SF Ground Floor (Divisible)

FRONTAGE: 60'

CEILING HEIGHT: 15' Ground Floor

POSSESSION: Immediate

ASKING RENT: Upon Request

TRANSPORTATION: A C B D 1 2 3

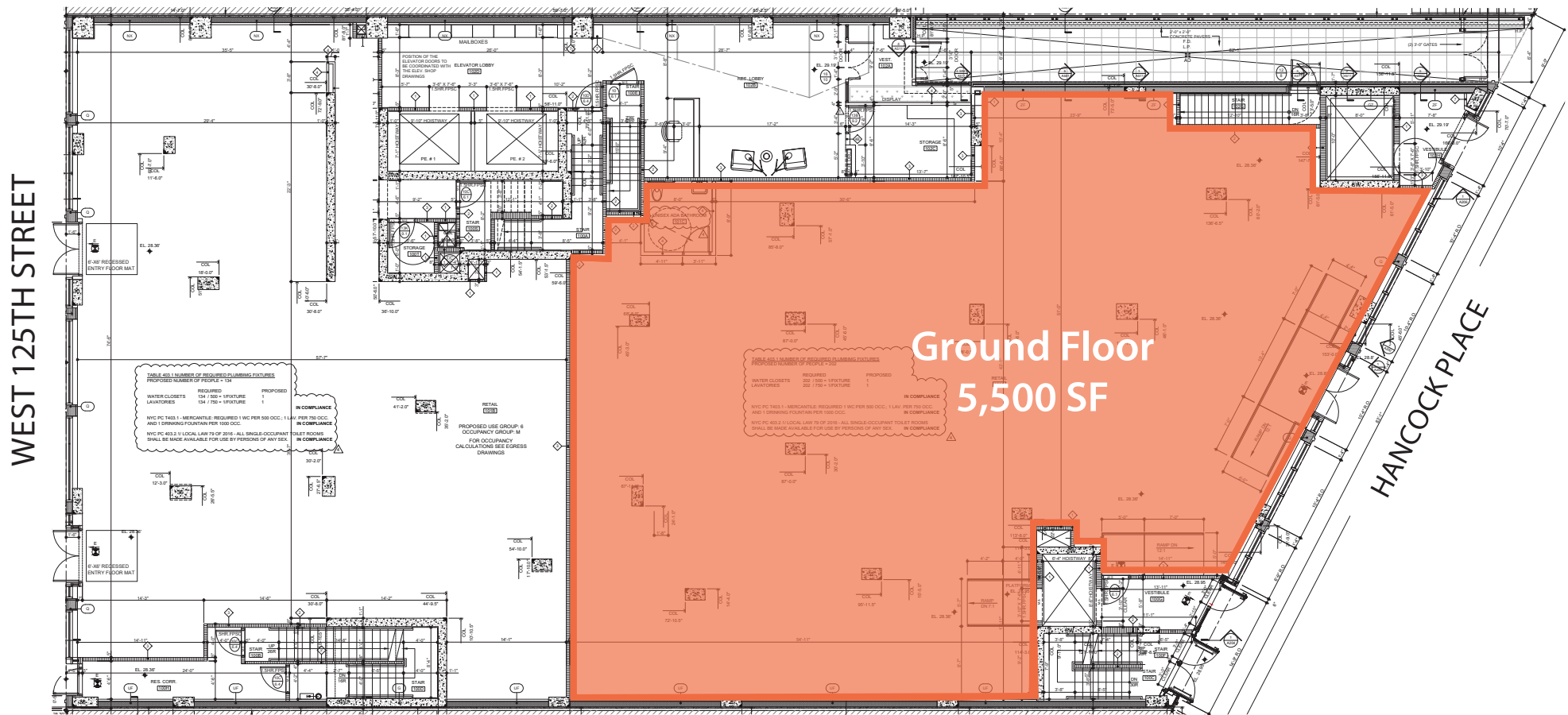
## NEIGHBORS:



# 11 HANCOCK PLACE

BETWEEN ST NICHOLAS & MORNINGSIDE AVENUES | HARLEM

## FLOOR PLANS



# 11 HANCOCK PLACE

BETWEEN ST NICHOLAS & MORNINGSIDE AVENUES | HARLEM

FOR MORE INFORMATION,  
PLEASE CONTACT:

**ELI YADID**

917.770.9173 | [EYadid@ksrny.com](mailto:EYadid@ksrny.com)

**ORI MELLOUL**

347.377.1392 | [OMelloul@ksrny.com](mailto:OMelloul@ksrny.com)

