

± 0.66 ACRES FOR SALE

# 2522 E ROBINSON AVE



**PALMER HAYS**, SIOR MEMBER ASSOCIATE  
INDUSTRIAL & LAND SPECIALIST  
479.466.8499  
PALMER@BENNETTCRE.COM

**CAMERON CLARK**  
EXECUTIVE BROKER  
479.387.4014  
CAMERON@BENNETTCRE.COM

**ASKING PRICE: \$240,000**

# SITE SUMMARY

±0.66 ACRES FOR SALE



## OVERVIEW

**±0.66**  
ACRES

**\$240,000**  
ASKING PRICE

**C-2**  
ZONING

**ADDRESS** 2522 E ROBINSON AVE

**CITY, STATE** SPRINGDALE, AR

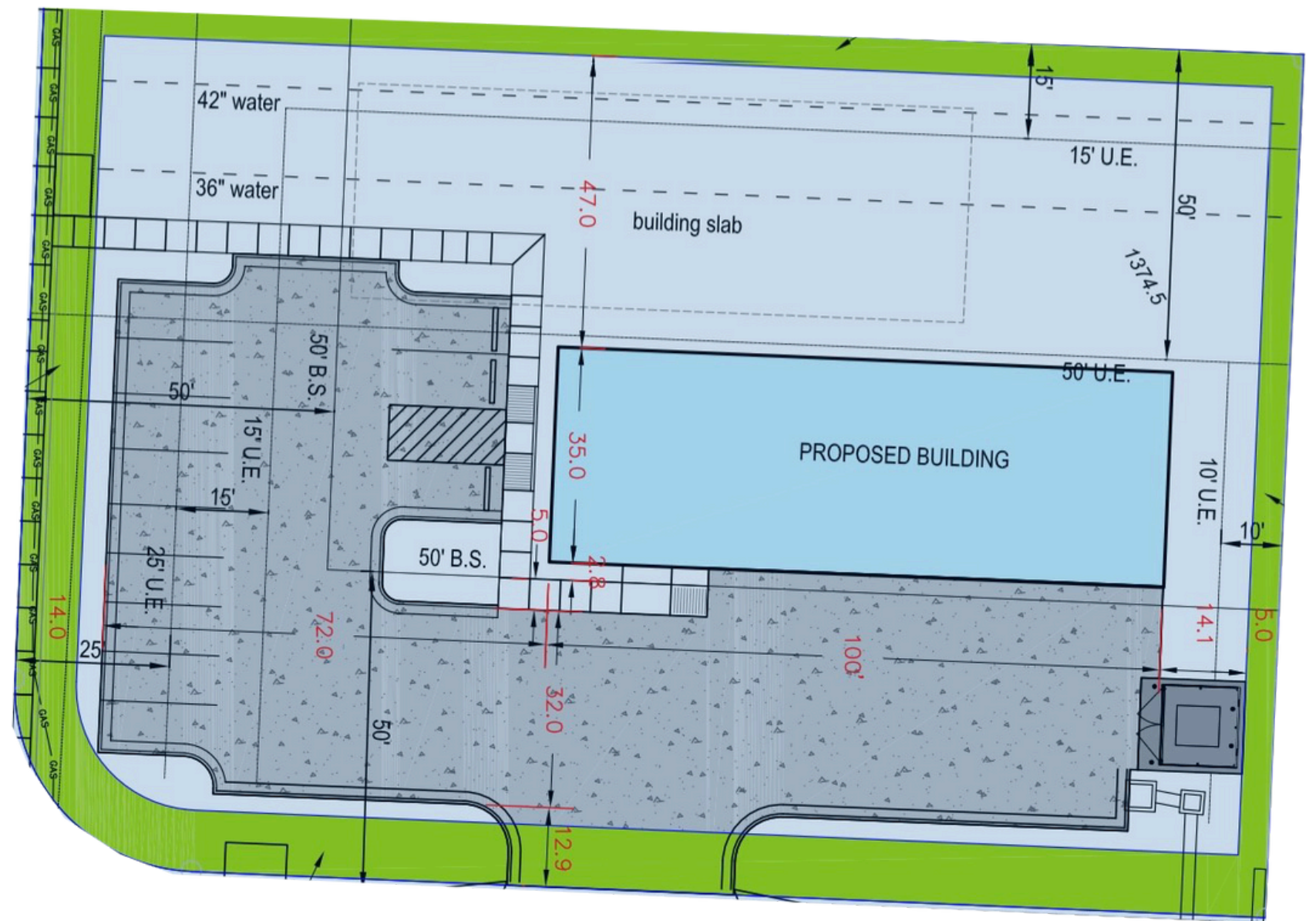
**AVAILABLE** ±0.66 ACRES

**ASKING PRICE** \$240,000

**ZONING** C-2

## HIGHLIGHTS

- + HIGHLY VISIBLE CORNER LOT
- + 25,000 VEHICLES PER DAY
- + CURRENT SLAB WILL NEED TO BE REMOVED UPON REDEVELOPMENT
- + 3,500 SF PRE-ENGINEERED METAL BUILDING CAN CONVEY UPON SALE



# AERIAL VIEW

± 0.66 ACRES FOR SALE



2522 E ROBINSON AVE // SPRINGDALE, AR

BENNETTCRE.COM

# AERIAL VIEW

± 0.66 ACRES FOR SALE

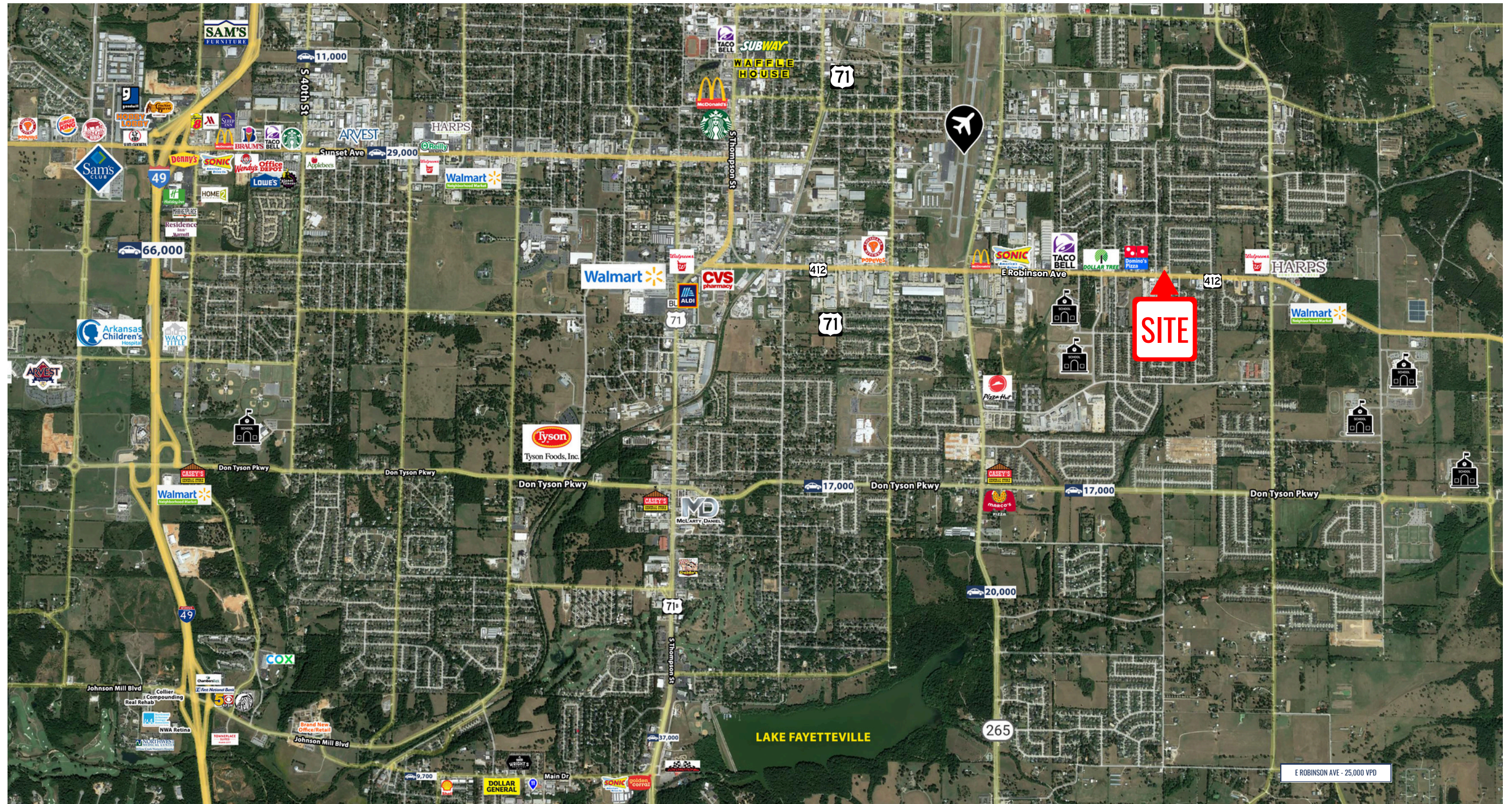


2522 E ROBISON AVE // SPRINGDALE, AR

[BENNETTCRE.COM](http://BENNETTCRE.COM)

# AERIAL VIEW

± 0.66 ACRES FOR SALE



2522 E ROBISON AVE // SPRINGDALE, AR

BENNETTCRE.COM