

# EXCLUSIVE LISTING!

1460 S. Bonnie Beach Pl, Los Angeles, CA 90023

3,930 SF Industrial Building on 6,405 SF Lot, Unincorporated LA County near Commerce



## SUMMARY

Subject Property:	1460 S Bonnie Beach Pl Los Angeles, CA 90023
Price:	\$700,000
Year Built:	1947
Total Building Area/Lot Size:	3,930 SF / 6,405 SF
Zoning:	LCM2
APN:	5241-022-003

## Investment Highlights & Summary

- Upgraded Electrical with 400 AMP panel fed overhead; 120 / 240v Single Phase
- Oversized Entries
- Security gate
- 12-16 Foot Ceilings
- Ample Parking

Growth Investment Group is proud to present this vacant warehouse located at 1460 S Bonnie Beach Place in the City of Commerce, this industrial property presents a prime opportunity for a variety of business operations. The property boasts a newly upgraded 400-amp electrical panel with 120/240v single-phase power, gated parking, and ceiling heights ranging from 12 to 16 feet, making it suitable for a wide range of industrial applications, from manufacturing and production to warehousing and storage. Centrally located with convenient access to major freeways, including the I-5, I-710, I-10, and I-60, making it an ideal hub for distribution and logistics. Property is currently vacant. The property is in LA County jurisdiction and requires some County corrections to allow Southern California Edison to reconnect electricity. The property has been appraised for \$1.16M (8/2025). Looking at all offers. Tours can be scheduled with serious buyers. Call me for details!



# EXCLUSIVE LISTING!

1460 S. Bonnie Beach Pl, Los Angeles, CA 90023

3,930 SF Industrial Building on 6,405 SF Lot, Unincorporated LA County near Commerce



JUSTIN MCCARDLE



310.606.0192



[justin@growthinvestmentgroup.com](mailto:justin@growthinvestmentgroup.com)

**EXCLUSIVE LISTING!**

1460 S. Bonnie Beach Pl, Los Angeles, CA 90023

3,930 SF Industrial Building on 6,405 SF Lot, Unincorporated LA County near Commerce

**GIG**  
GROWTH INVESTMENT GROUP  
CALIFORNIA



JUSTIN MCCARDLE



310.606.0192



[justin@growthinvestmentgroup.com](mailto:justin@growthinvestmentgroup.com)

**GIG**  
GROWTH INVESTMENT GROUP  
CALIFORNIA

**EXCLUSIVE LISTING!**

1460 S. Bonnie Beach Pl, Los Angeles, CA 90023

3,930 SF Industrial Building on 6,405 SF Lot, Unincorporated LA County near Commerce

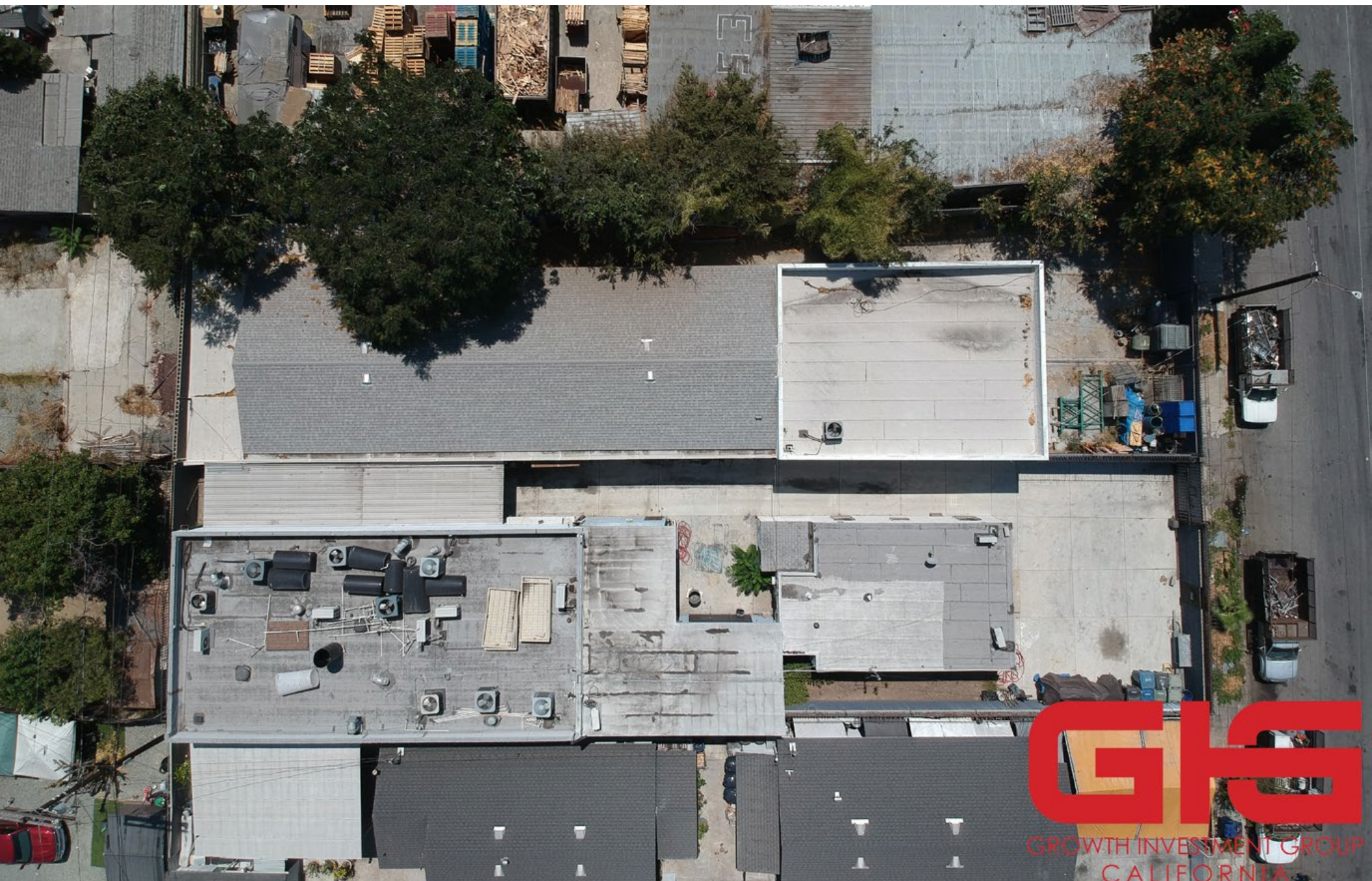


**EXCLUSIVE LISTING!**

1460 S. Bonnie Beach Pl, Los Angeles, CA 90023

3,930 SF Industrial Building on 6,405 SF Lot, Unincorporated LA County near Commerce

**GIG**  
GROWTH INVESTMENT GROUP  
CALIFORNIA



**GIG**  
GROWTH INVESTMENT GROUP  
CALIFORNIA

JUSTIN MCCARDLE  310.606.0192  [justin@growthinvestmentgroup.com](mailto:justin@growthinvestmentgroup.com)

# EXCLUSIVE LISTING!

1460 S. Bonnie Beach Pl, Los Angeles, CA 90023

3,930 SF Industrial Building on 6,405 SF Lot, Unincorporated LA County near Commerce



JUSTIN MCCARDLE



310.606.0192



[justin@growthinvestmentgroup.com](mailto:justin@growthinvestmentgroup.com)

**EXCLUSIVE LISTING!**

1460 S. Bonnie Beach Pl, Los Angeles, CA 90023

3,930 SF Industrial Building on 6,405 SF Lot, Unincorporated LA County near Commerce

**GIG**  
GROWTH INVESTMENT GROUP  
CALIFORNIA



**GIG**  
GROWTH INVESTMENT GROUP  
CALIFORNIA

JUSTIN MCCARDLE



310.606.0192

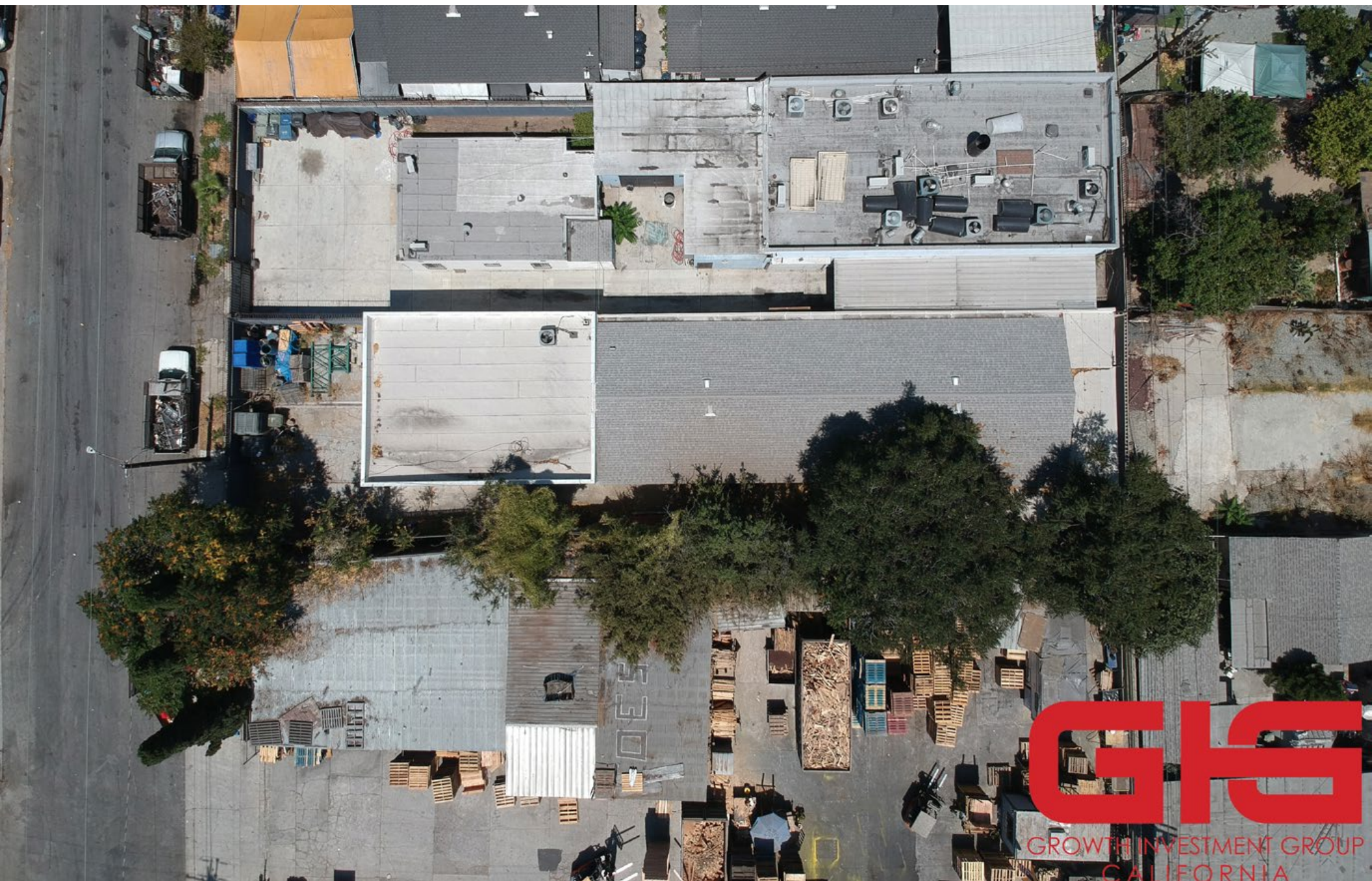


[justin@growthinvestmentgroup.com](mailto:justin@growthinvestmentgroup.com)

**EXCLUSIVE LISTING!**

1460 S. Bonnie Beach Pl, Los Angeles, CA 90023

3,930 SF Industrial Building on 6,405 SF Lot, Unincorporated LA County near Commerce



JUSTIN MCCARDLE  310.606.0192  [justin@growthinvestmentgroup.com](mailto:justin@growthinvestmentgroup.com)