



# FOR LEASE

178 BATH ROAD,  
BRUNSWICK, ME 04011



## PROPERTY HIGHLIGHTS

- Prime location on Bath Road in front of Cook's Corner Shopping Center, with traffic counts exceeding 25,000± vehicles/day.
- Strong tenant mix including Hannaford, TJ Maxx, Staples, Dollar Tree, Jersey Mikes, Burger King, and Hobby Lobby.
- Concept plan includes drive-thru capability- deal for QSR, bank, or service retail users.
- 0.72± acre retail pad site with strong visibility and access.
- **Lease Rate: \$95,000/year NNN**





PROPERTY DETAILS

OWNER/DEVELOPER	KPR
ASSESSOR'S REF	Map CC1, Lot 34
LOT SIZE	0.72± Acre
ZONING	CC - Regional Business Commercial District
LEASE RATE	\$95,000/year NNN

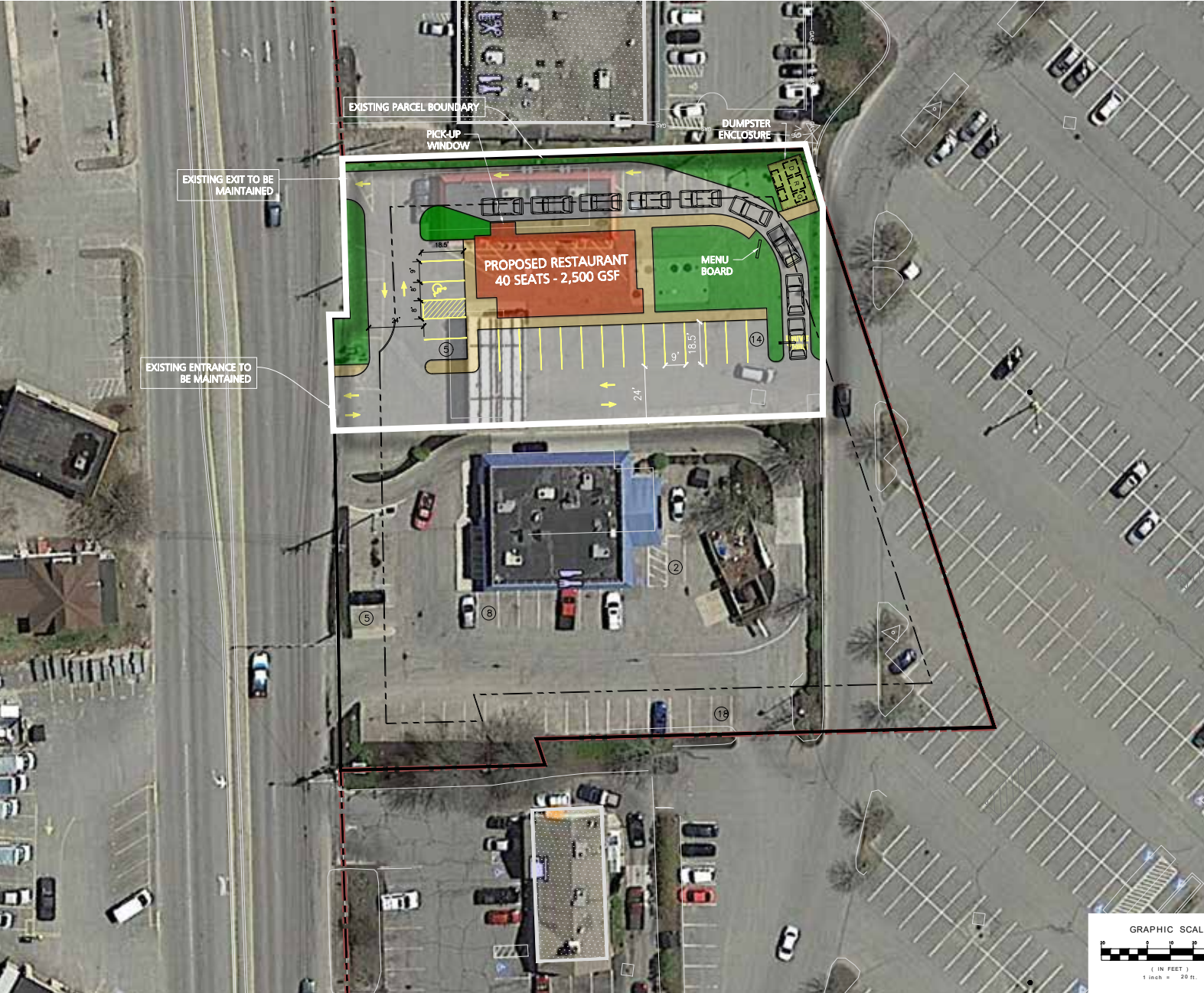
DEMOGRAPHICS

2025	0-3 Miles	3-5 Miles	5-10 Miles
POPULATION	18,705	35,589	64,773
MEDIAN AGE	43.2	45.3	46.7
NO. OF HOUSEHOLDS	7,817	15,677	28,333
AVERAGE HOUSEHOLD SIZE	2.1	2.1	2.2
TOTAL BUSINESSES	1,043	1,805	2,816
TOTAL EMPLOYEES	16,171	29,015	37,396
MEDIAN HOUSEHOLD INCOME	\$70,992	\$75,220	\$81,680





CONCEPT PLAN WITH DRIVE-THRU





# FOR LEASE | DEVELOPMENT SITE

178 BATH ROAD, BRUNSWICK, ME 04011



## CONTACT US



**DEREK MILLER**  
Partner  
+1 207.553.1721 D  
+1 207.240.0032 C  
[dmiller@boulos.com](mailto:dmiller@boulos.com)



**CHRIS ROMANO**  
Associate  
+1 207.553.1717 D  
+1 207.233.1792 C  
[cromano@boulos.com](mailto:cromano@boulos.com)

©2025 The Boulos Company, Inc. All rights reserved. This information has been obtained from sources believed reliable, but has not been verified for accuracy or completeness. You should conduct a careful, independent investigation of the property and verify all information. Any reliance on this information is solely at your own risk. The Boulos Company and The Boulos Company logo are service marks of The Boulos Company, Inc. All other marks displayed on this document are the property of their respective owners. Photos herein are the property of their respective owners. Use of these images without the express written consent of the owner is prohibited.