

# 10,000 SF BUILDING AVAILABLE IMMEDIATELY

1215 N FM 3083 Rd E, Conroe, TX 77303



For Lease / Industrial Building in Conroe



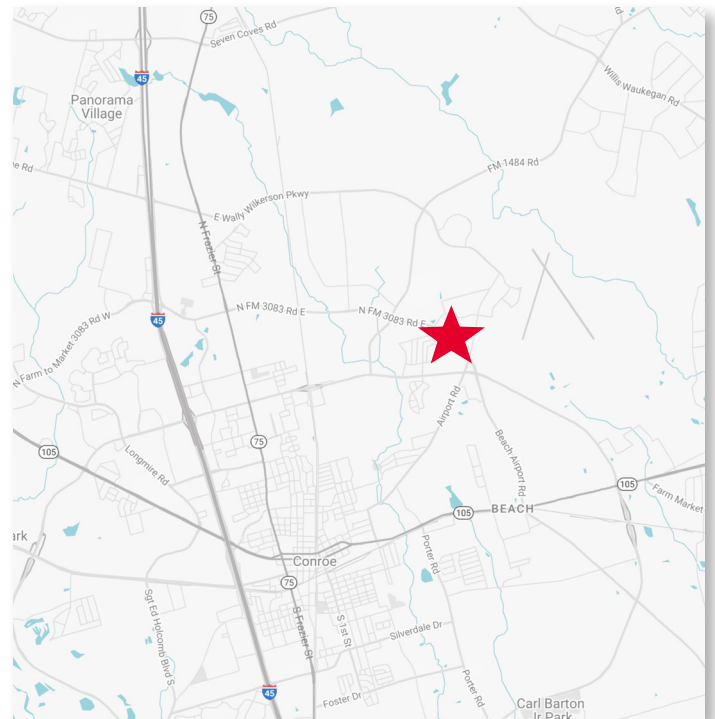
## FEATURES

- 10,000 SF Total
- ±800 SF Office
- (1) Grade-level Door
- ESFR Sprinklers
- Power: 3-Phase / 480V / 400 Amps
- T5 Lighting
- 24' Eave Height
- Racking Available

## FOR MORE INFORMATIONS, CONTACT:

**Carter Holmes**  
Senior Associate  
Direct: +1 281 688 9274  
Mobile: +1 713 417 5447  
carter.holmes@cushwake.com

**John Kruse**  
Managing Director  
Direct: +1 281 688 9234  
Mobile: +1 713 304 4919  
john.kruse@cushwake.com



**10,000 SF BUILDING AVAILABLE IMMEDIATELY**

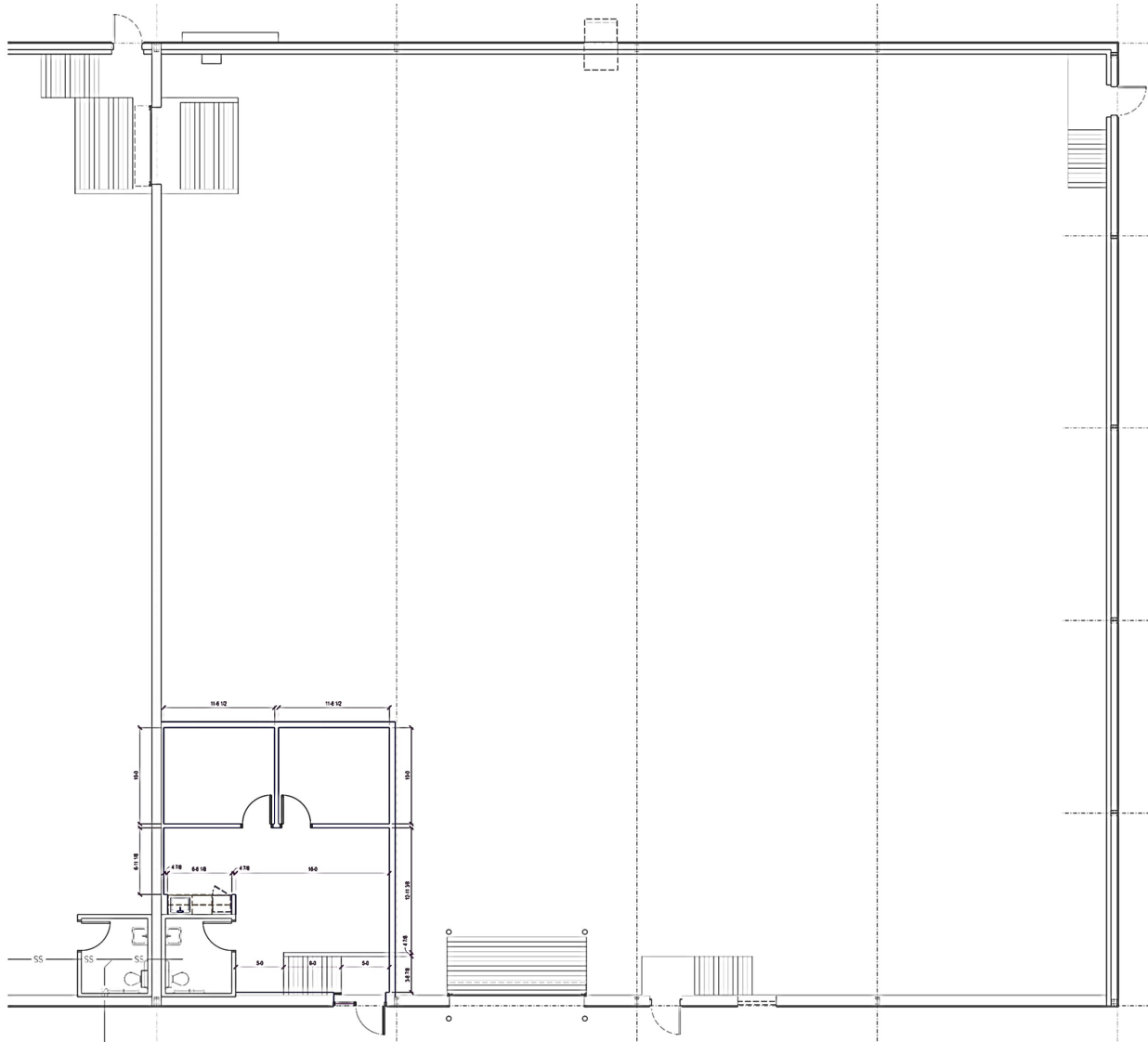
1215 N FM 3083 RD E, CONROE, TX 77303



For Lease / Industrial Building in Conroe

## FLOOR PLAN

SUITE B: 10,000 SF



### FOR MORE INFORMATIONS, CONTACT:

**Carter Holmes**

Senior Associate

Direct: +1 281 688 9274

Mobile: +1 713 417 5447

[carter.holmes@cushwake.com](mailto:carter.holmes@cushwake.com)

**John Kruse**

Managing Director

Direct: +1 281 688 9234

Mobile: +1 713 304 4919

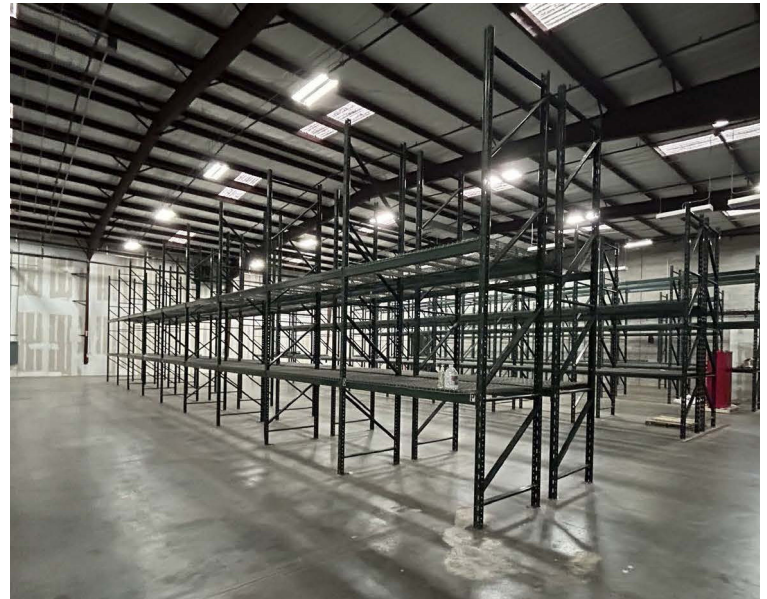
[john.kruse@cushwake.com](mailto:john.kruse@cushwake.com)

**10,000 SF BUILDING AVAILABLE IMMEDIATELY**

1215 N FM 3083 RD E, CONROE, TX 77303



For Lease / Industrial Building in Conroe



**FOR MORE INFORMATIONS, CONTACT:**

**Carter Holmes**

Senior Associate

Direct: +1 281 688 9274

Mobile: +1 713 417 5447

[carter.holmes@cushwake.com](mailto:carter.holmes@cushwake.com)

**John Kruse**

Managing Director

Direct: +1 281 688 9234

Mobile: +1 713 304 4919

[john.kruse@cushwake.com](mailto:john.kruse@cushwake.com)

**10,000 SF BUILDING AVAILABLE IMMEDIATELY**

1215 N FM 3083 RD E, CONROE, TX 77303



For Lease / Industrial Building in Conroe



**DRIVE TIMES**

- Downtown Houston - 50 Mins
- Houston Galleria - 60 Mins
- Bush Intercontinental - 35 Mins
- Dallas - 2 Hrs 45 Mins

**FOR MORE INFORMATIONS, CONTACT:**

**Carter Holmes**  
Senior Associate  
Direct: +1 281 688 9274  
Mobile: +1 713 417 5447  
carter.holmes@cushwake.com

**John Kruse**  
Managing Director  
Direct: +1 281 688 9234  
Mobile: +1 713 304 4919  
john.kruse@cushwake.com