

# 11.36 ACRES

## LAND FOR LEASE DIVISIBLE TO 6,000 SF

**80**  
**Passaic Ave**  
Florham Park, NJ



**Fully entitled for:**

- Contractor yard storage
- Trailer storage
- Truck parking
- Material storage
- Landscaper yard

**NAI James E. Hanson**  
COMMERCIAL REAL ESTATE SERVICES. WORLDWIDE

CAPITAL  
MARKETS  
& LEASING

Christopher D. Todd, SIOR  
Senior Managing Director  
Capital Markets & Leasing  
201 488 5800 x117  
ctodd@naihanson.com

Jordan W. Avanzato, SIOR  
Senior Managing Director  
Capital Markets & Leasing  
201 488 5800 x132  
javanzato@naihanson.com

William Ericksen, SIOR, CCIM  
Managing Director  
Capital Markets & Leasing  
201 488 5800 x133  
wericksen@naihanson.com

Christopher D'Andrea  
Associate  
Corporate Services Group  
973 463 1011 x296  
cdandrea@naihanson.com

Russell "Pepe" Smith  
Associate  
Capital Markets & Leasing  
973 463 1011 x283  
rsmith@naihanson.com

# SITE PLAN OVERLAY

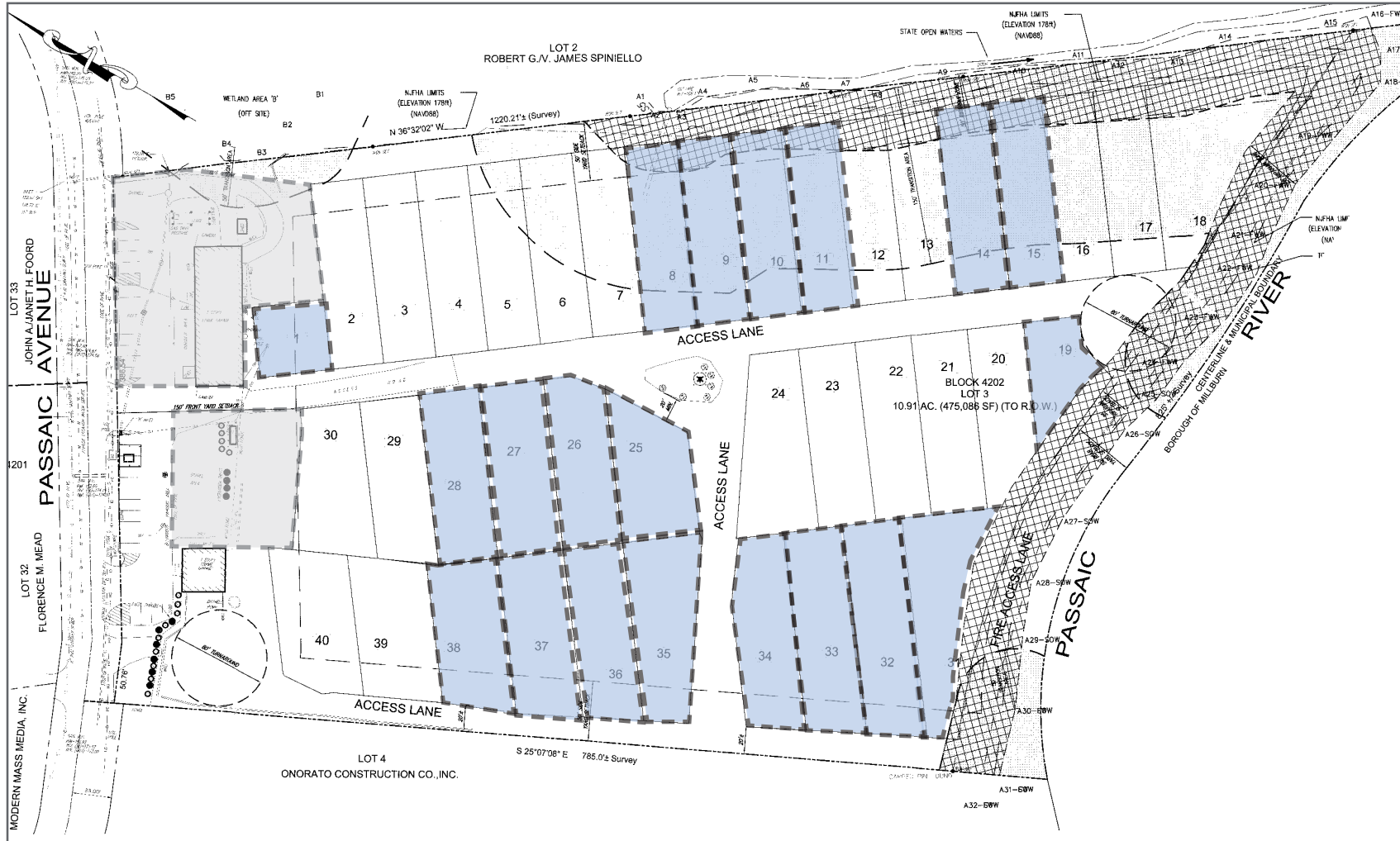
80  
**Passaic Ave**  
Florham Park, NJ



\*NOT TO SCALE

# SITE PLAN

**80**  
**Passaic Ave**  
Florham Park, NJ



Parcel #	SQ.FT.
1	3,519 (Leased)
2	6,819
3	6,820
4	6,826
5	6,821
6	6,813
7	6,813
8	6,827 (Leased)
9	6,827 (Leased)
10	6,827 (Leased)
11	6,813 (Leased)
12	6,811
13	6,827
14	6,827 (Leased)
15	6,828 (Leased)
16	6,827
17	6,841
18	13,218
19	5,850 (Leased)
20	6,923
21	7,094
22	7,094
23	7,194
24	8,322
25	7,313 (Leased)
26	6,922 (Leased)
27	7,825 (Leased)
28	7,092 (Leased)
29	6,817
30	7,315
31	11,050 (Leased)
32	8,935 (Leased)
33	8,489 (Leased)
34	7,739 (Leased)
35	8,013 (Leased)
36	7,228 (Leased)
37	7,433 (Leased)
38	7,346 (Leased)
39	7,628
40	7,548

# PROPERTY PHOTOS

80  
Passaic Ave  
Florham Park, NJ



# HIGHWAY AERIAL

**80**  
**Passaic Ave**  
Florham Park, NJ

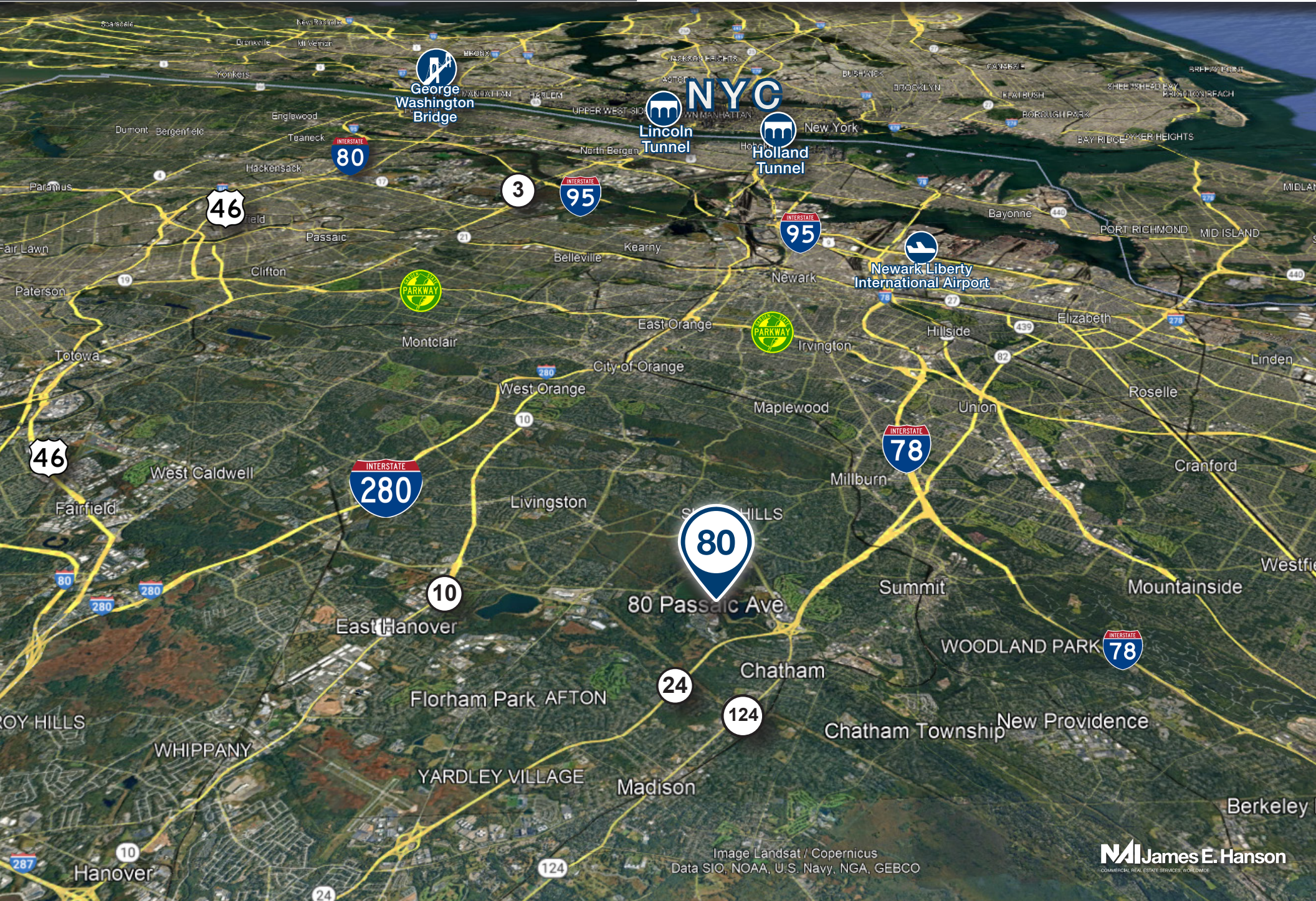


Image Landsat / Copernicus  
Data SIO, NOAA, U.S. Navy, NGA, GEBCO

**James E. Hanson**  
COMMERCIAL REAL ESTATE SERVICES, WORLDWIDE