



**RETAIL/OFFICE SUITE**  
**MERCANTILE WHARF BUILDING**  
**WATERFRONT/NORTH END BOSTON, MA**

**FOR LEASE**

111 Atlantic Ave, Boston, MA 02110  
1,481 Square Feet



**RETAIL/OFFICE SUITE**  
1,481 Square Feet

**AREA HIGHLIGHTS**

- Retail/Office Suite
- Faneuil Hall Marketplace
- Blocks to the North End
- Financial District
- Rose Kennedy Greenway
- Joe's American Bar & Grill
- Waterfront Marriott Hotel

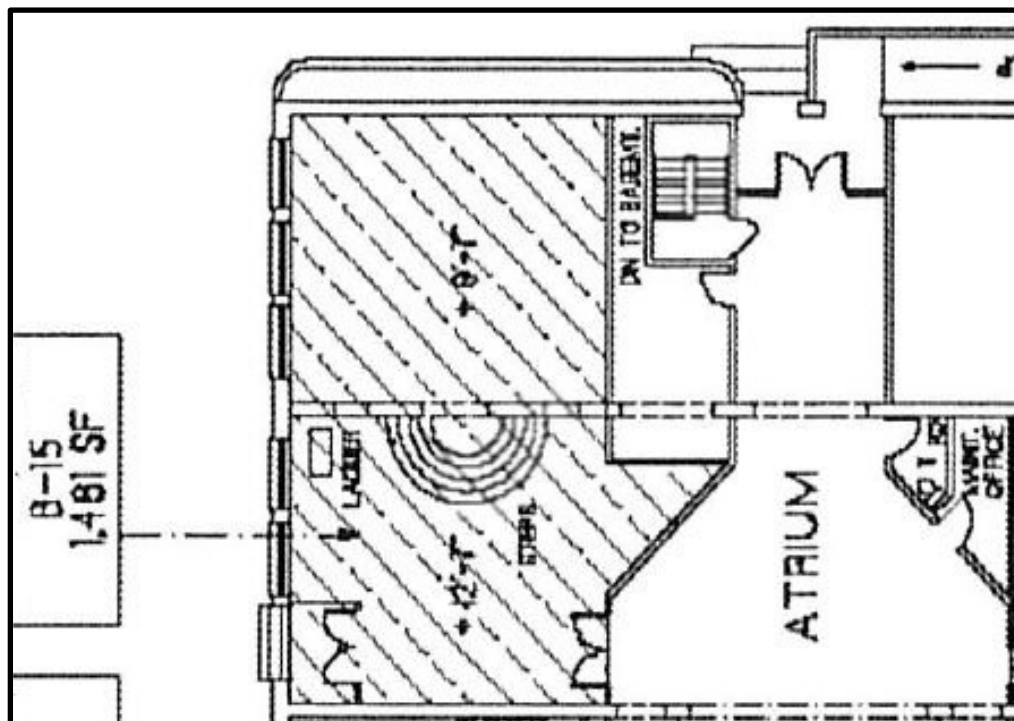
**DESCRIPTION:**

1,481 SF of Retail/Office Suite located in the historic Mercantile Wharf building located on the Boston Waterfront. This endcap suite is located across from Christopher Columbus Park on Atlantic Avenue. This building is located across the street from Faneuil Hall and Rose Kennedy Greenway and only minutes from the North End, Financial District, a large residential community and is in close proximity to Government Center and the Aquarium T-Stops.





**1,481 SF OF RETAIL/OFFICE SUITE**



**Floor Plan**

**Denenberg Realty Advisors – 617-720-5656 – [www.DenenbergRealty.com](http://www.DenenbergRealty.com)**

No warranty or representation, expressed or implied, is made as to the accuracy of the information contained herein, and same is submitted subject to errors, omissions, change in price, rental or other conditions, or withdrawal without notice.

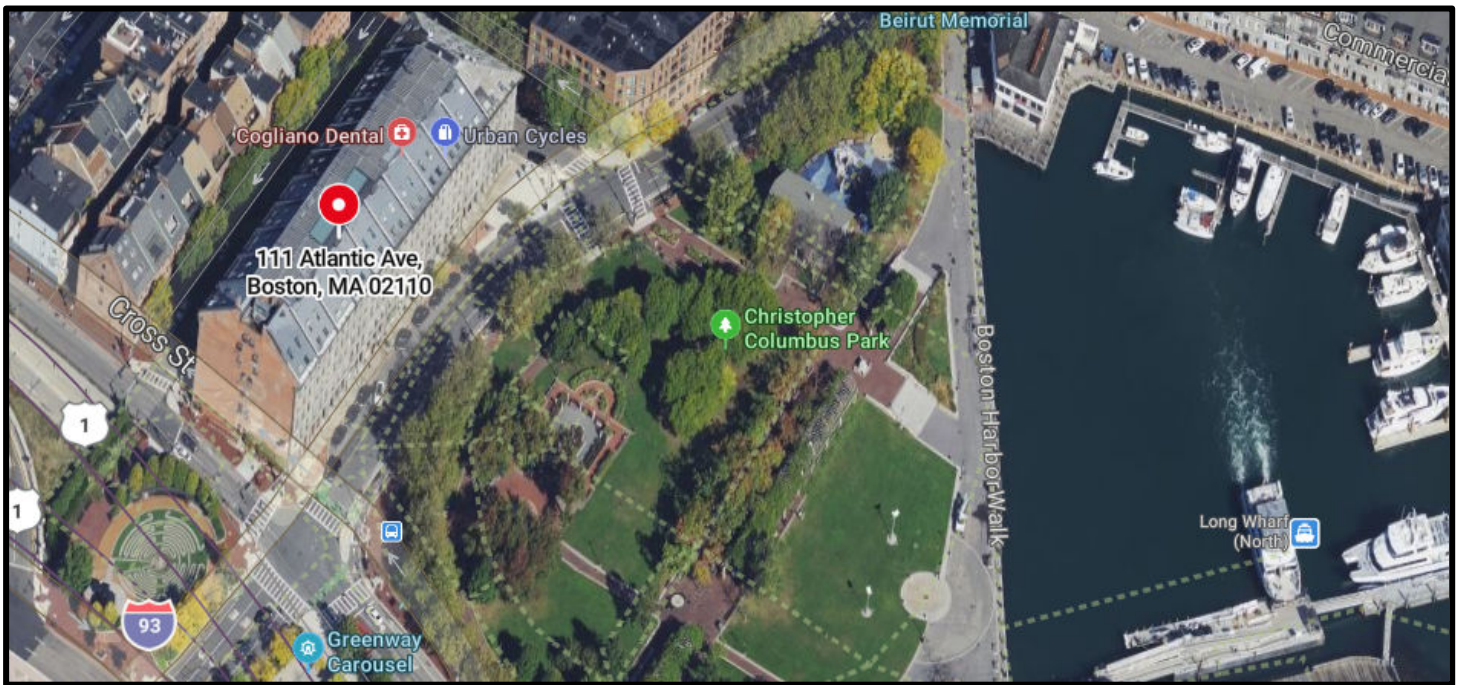




**Mercantile Wharf Building**



**Christopher Columbus Park**



**The Historic Mercantile Wharf Building is located across from Christopher Columbus Park, Boston Harbor as well as Faneuil Hall Marketplace**

**Denenberg Realty Advisors – 617-720-5656 – [www.DenenbergRealty.com](http://www.DenenbergRealty.com)**

No warranty or representation, expressed or implied, is made as to the accuracy of the information contained herein, and same is submitted subject to errors, omissions, change in price, rental or other conditions, or withdrawal without notice.