

18695 SHERWOOD STREET
DETROIT, MICHIGAN

INDUSTRIAL FOR SALE
80,950 Square Feet Available



**SIGNATURE
ASSOCIATES**
KNOW SIGNATURE | KNOW RESULTS



PROPERTY FEATURES

- 80,950 square feet available
- 30' clear height
- (6) grade level doors
- Heavy power
- (6) Cranes: (1) 5-Ton 76'-4" Span, (1) 15-Ton 76'-4" Span, (1) 20-Ton 76'-4" Span, (3) 20-Ton 106'-0" Span
- Rail adjacent to property
- 50 parking spaces
- Can also be purchased as part of a portfolio totaling 133,241 sq. ft. and 11.988 acres
- Sale Price: \$4,200,000 (\$51.88/sq. ft.)



For more information, please contact:

STEVE GORDON
(248) 948 0101
sgordon@signatureassociates.com

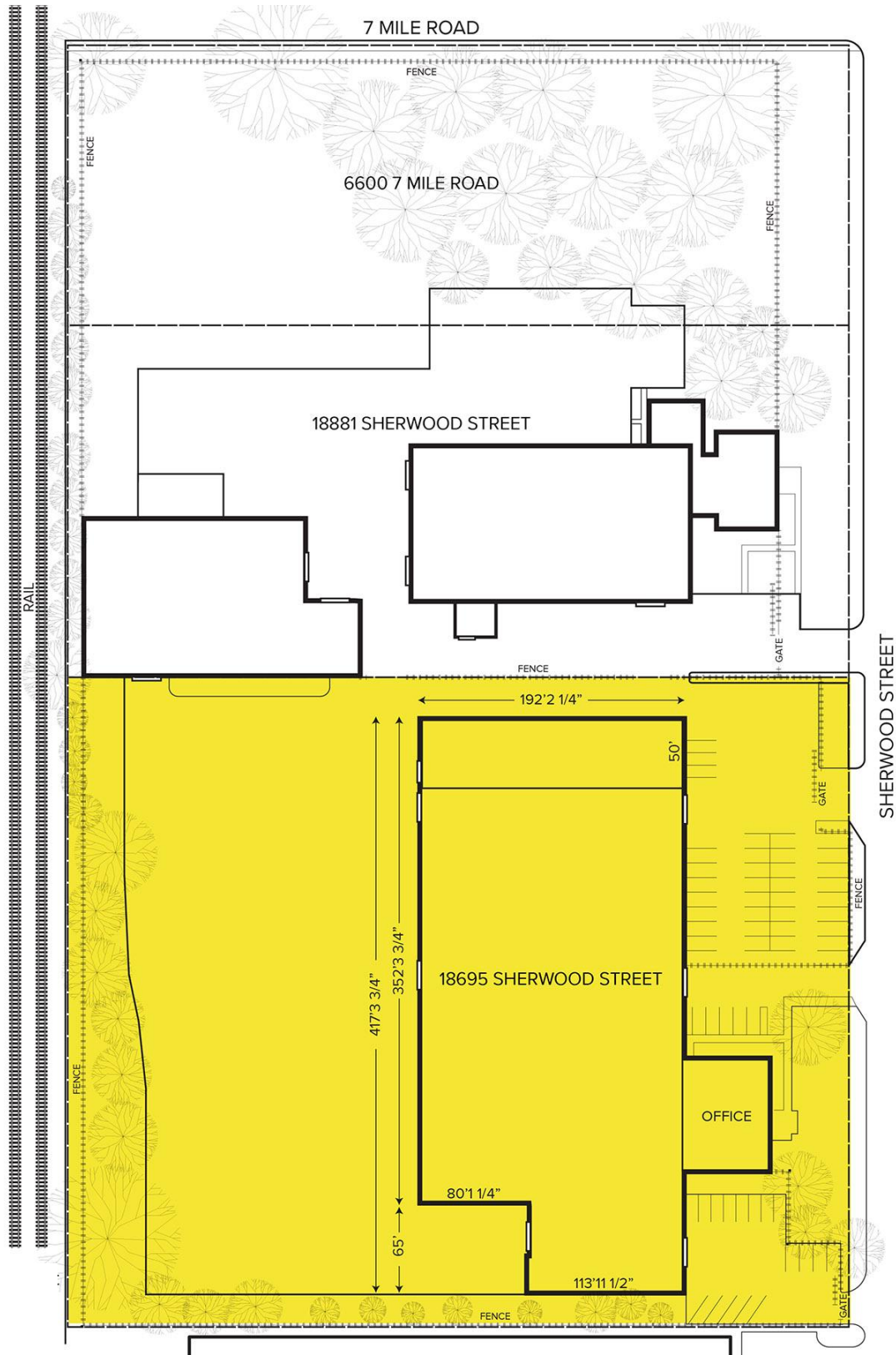
SIGNATURE ASSOCIATES
One Towne Square, Suite 1200
Southfield, MI 48076
www.signatureassociates.com

18695 Sherwood Street – Detroit, Michigan

Industrial For Sale

80,950
Square Feet
AVAILABLE

Site Plan



For more information, please contact:

STEVE GORDON
(248) 948 0101
sgordon@signatureassociates.com

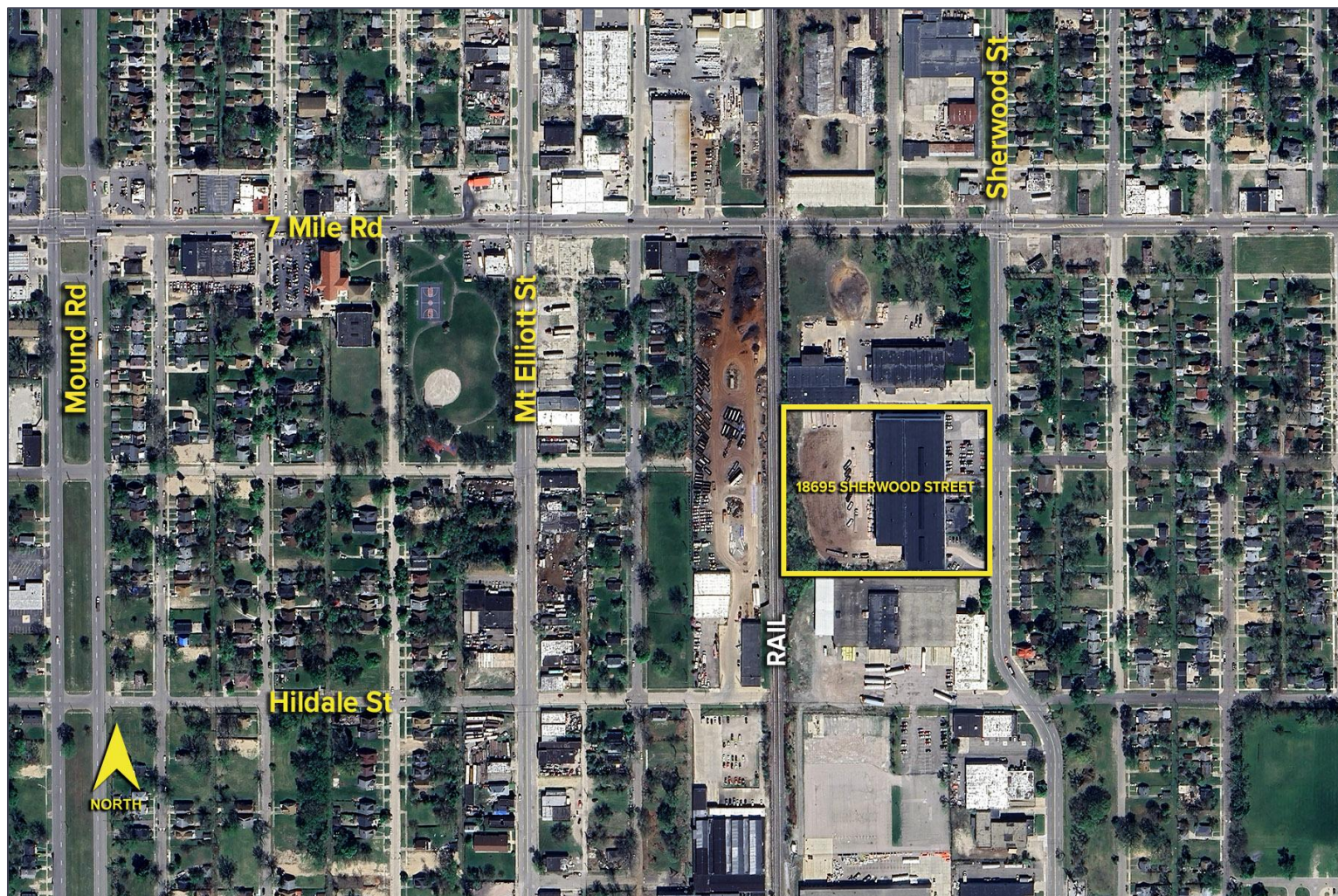
SIGNATURE ASSOCIATES
One Towne Square, Suite 1200
Southfield, MI 48076
www.signatureassociates.com

18695 Sherwood Street – Detroit, Michigan

Industrial For Sale

80,950
Square Feet
AVAILABLE

Aerial



For more information, please contact:

STEVE GORDON
(248) 948 0101
sgordon@signatureassociates.com

SIGNATURE ASSOCIATES
One Towne Square, Suite 1200
Southfield, MI 48076
www.signatureassociates.com