

DEVELOPMENT SITE

KINGS CHAPEL ROAD
PERRY, GA 31069
HOUSTON COUNTY

±24.64 ACRES

ASKING PRICE:
\$60,000 PER SURVEYED
ACRE



DEREK FOSTER C: 478.997.1024

DFOSTER@THESUMMITGROUPMACON.COM

4124 ARKWRIGHT ROAD, SUITE 1, MACON, GA 31210

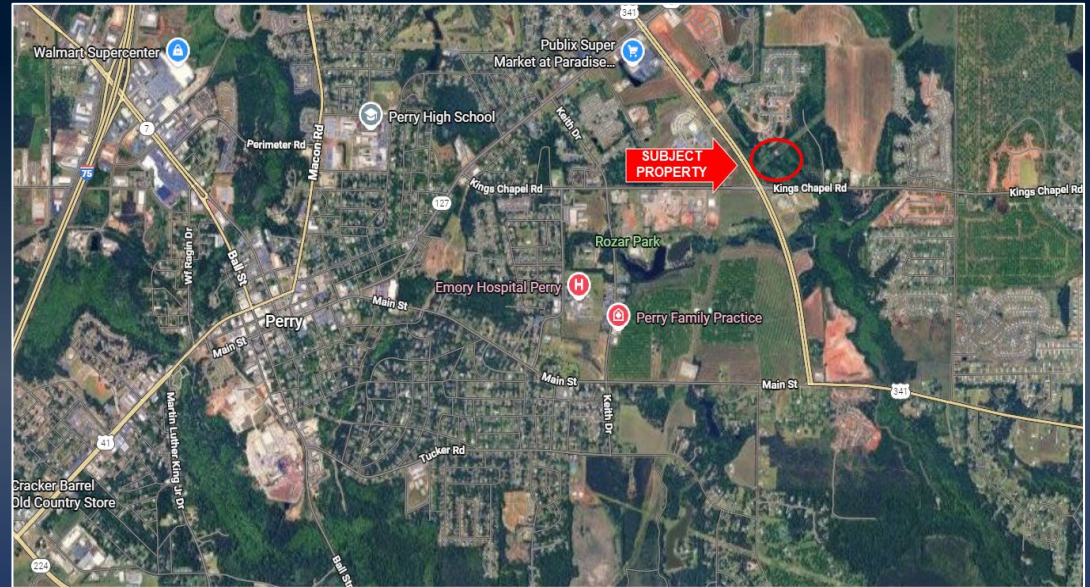
O: 478.750.7507

WWW.THESUMMITGROUPMACON.COM



PROPERTY INFORMATION

- ±24.64 acres in a high growth area
- Sewer and utilities available to site
- PUD (Planned Unit Development) zoning allows for flexible development opportunities
- Convenient access to Perry, Warner Robins and I-75
- Located in Perry (District 2) Houston County, GA
- This prime ±24.64-acre tract offers excellent potential for development within one of Houston County's most desirable growth corridors. With PUD zoning already in place, the property provides flexibility for a variety of residential or mixed-use projects.



The information contained herein has been compiled from various sources, both private and public. It is accurate and complete only to the extent to which The Summit Group has been able to ascertain from third party sources. As such, no warranty or guarantee is given or implied with regard to the accuracy or completeness of any information contained herein. Any interested party shall be required to conduct its own due diligence and investigations to verify, review, audit, or otherwise insure the information contained herein.

