

761

QUEEN STREET WEST

HIGH PROFILE RETAIL FOR LEASE



CBRE urban retail team

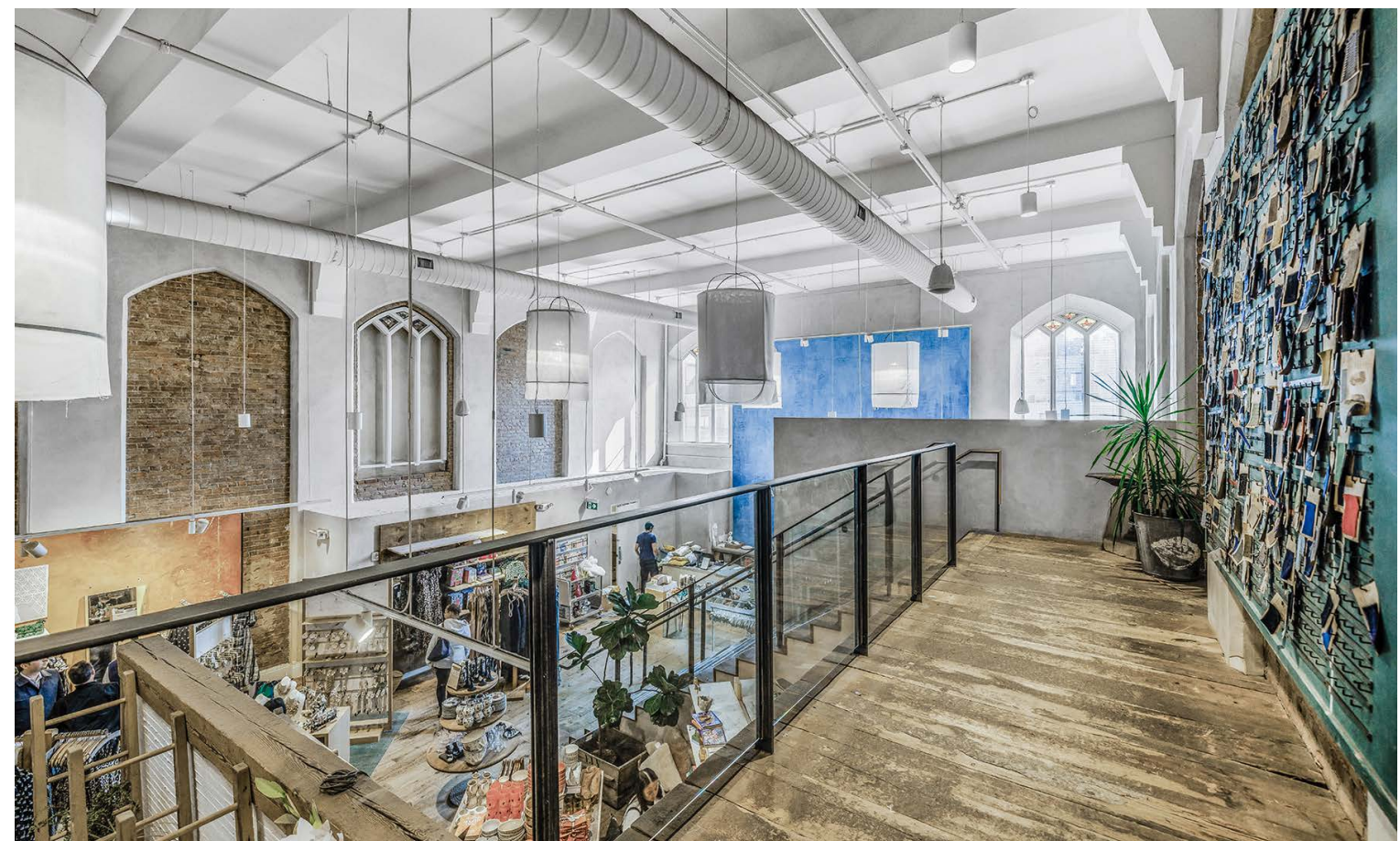


Property Details

Address:	761 Queen Street West, Toronto
Size:	Ground: 4,283 sq. ft. Second: 6,496 sq. ft. Total: 11,029 sq. ft. + 2,379 sq. ft. basement
Net Rent:	Please contact listing agents
TMI:	\$16.00 per sq. ft.
Available:	Immediately

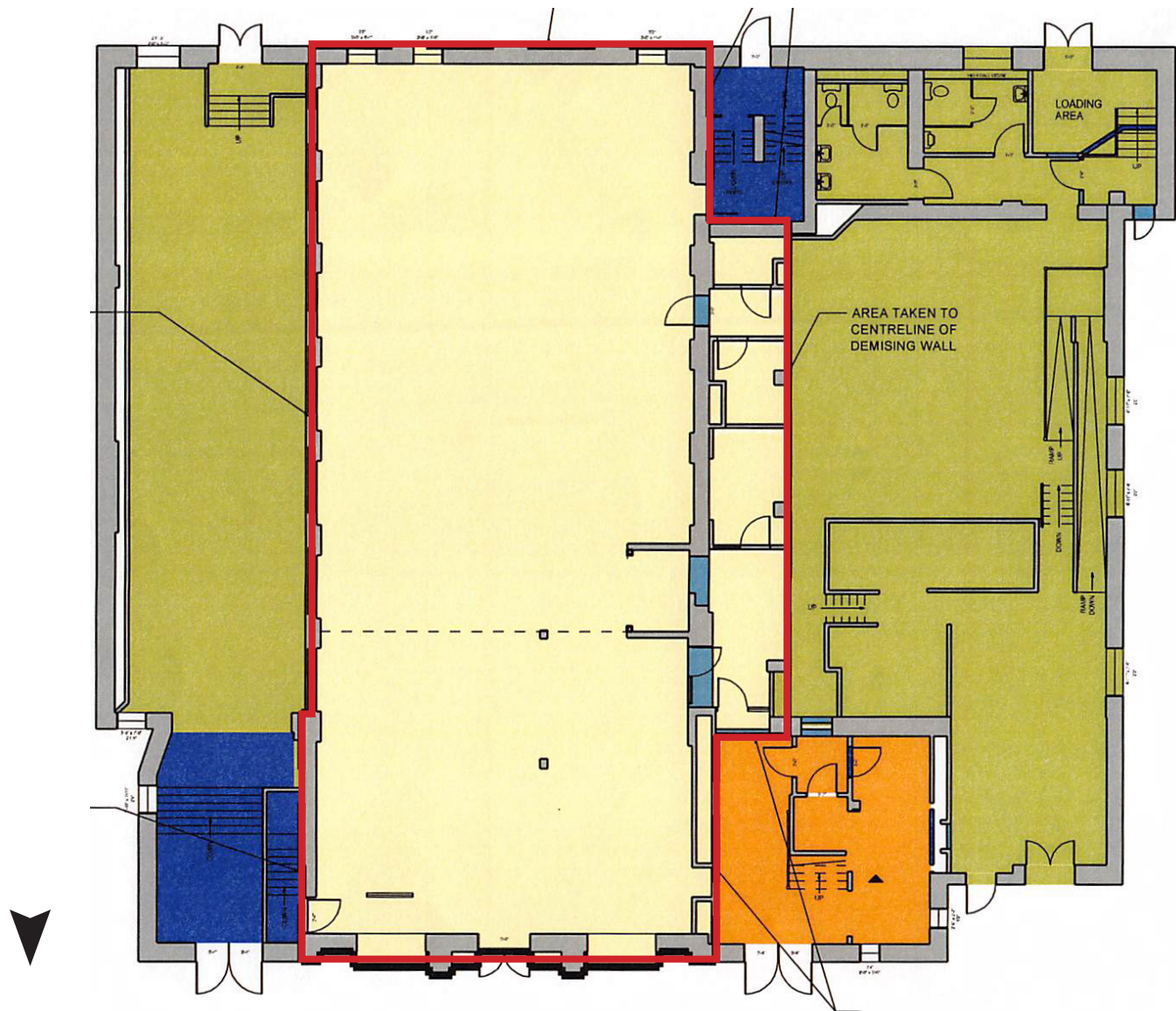
- Stunning retail space located within a beautifully retrofitted church which dates back to 1904
- Incredible ceiling heights and ample natural light throughout
- Located just west of Bathurst Street in the heart of West Queen West, steps to Trinity Bellwoods Park
- Neighbouring retailers include: Warby Parker, Jaybird, John Fluevog, Dutil Denim, Aesop, Le Labo, Heel Boy, Bailey Nelson, Filson, The Latest Scoop, Maguire Shoes, Terroni, Cumbrae's and many more





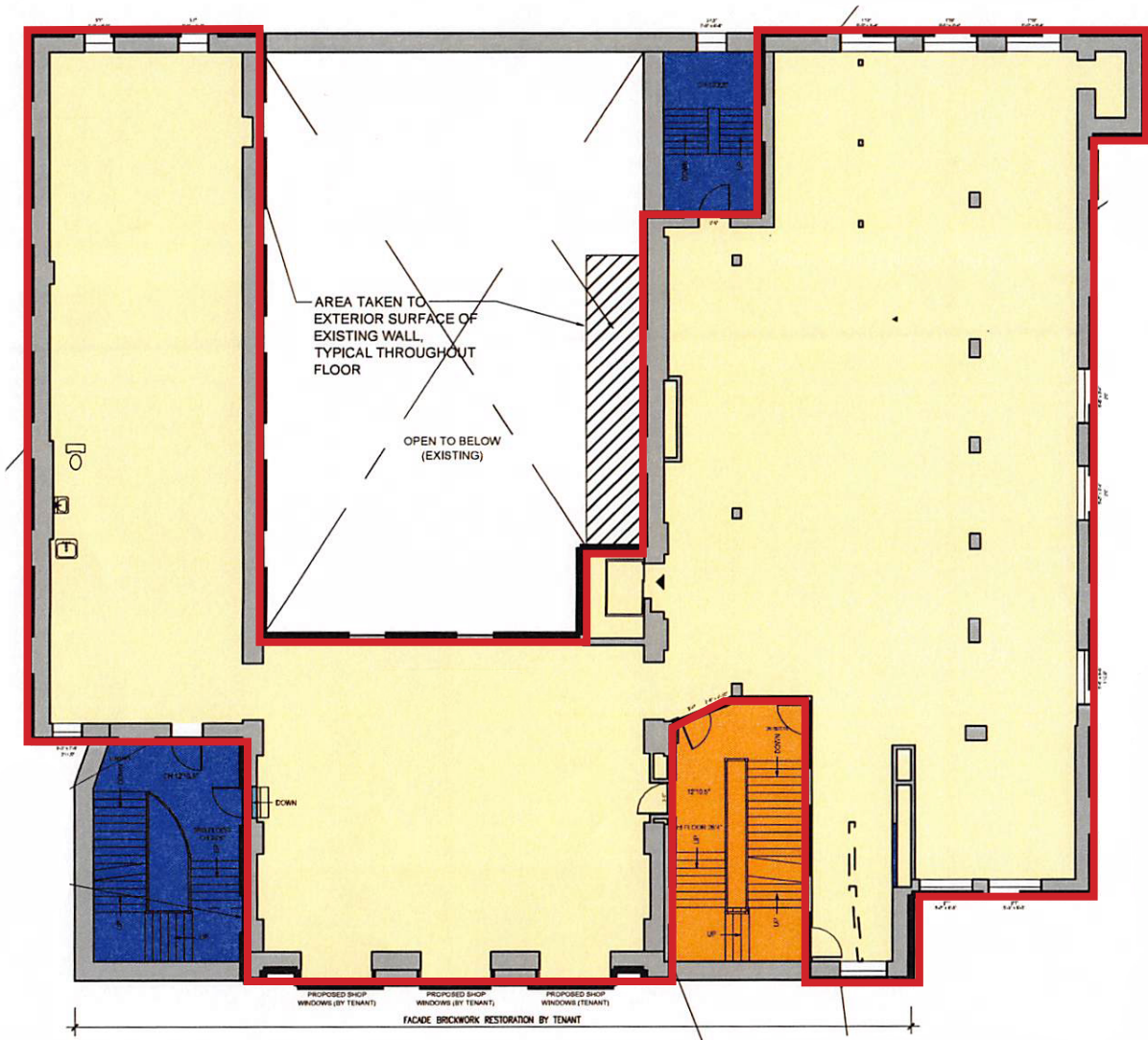
Floor Plans

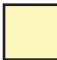
Ground: 4,238 sq. ft.



Queen Street West

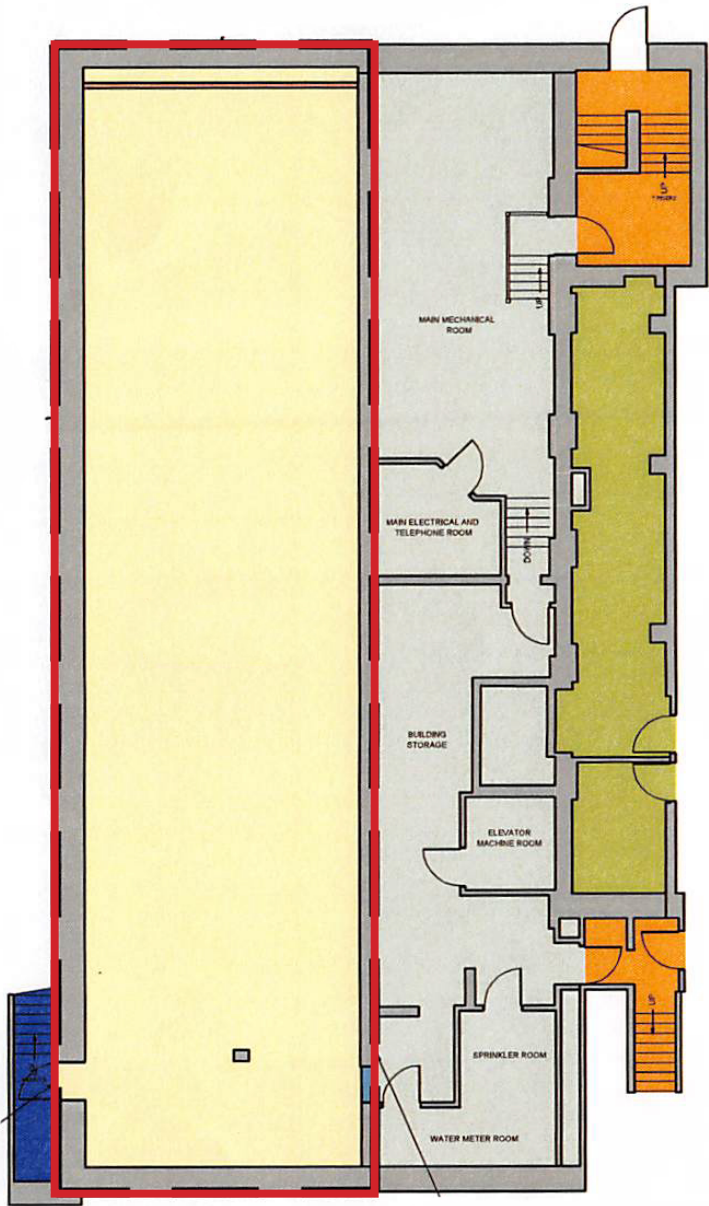
Second: 6,496 sq. ft.

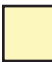


 Subject Space

Floor Plans

Lower Level: 2,379 sq. ft.



 Subject Space





FINANCIAL CORE

NATHAN PHILLIPS SQUARE

ENTERTAINMENT DISTRICT

761
QUEEN



501 QUEEN
STREETCAR

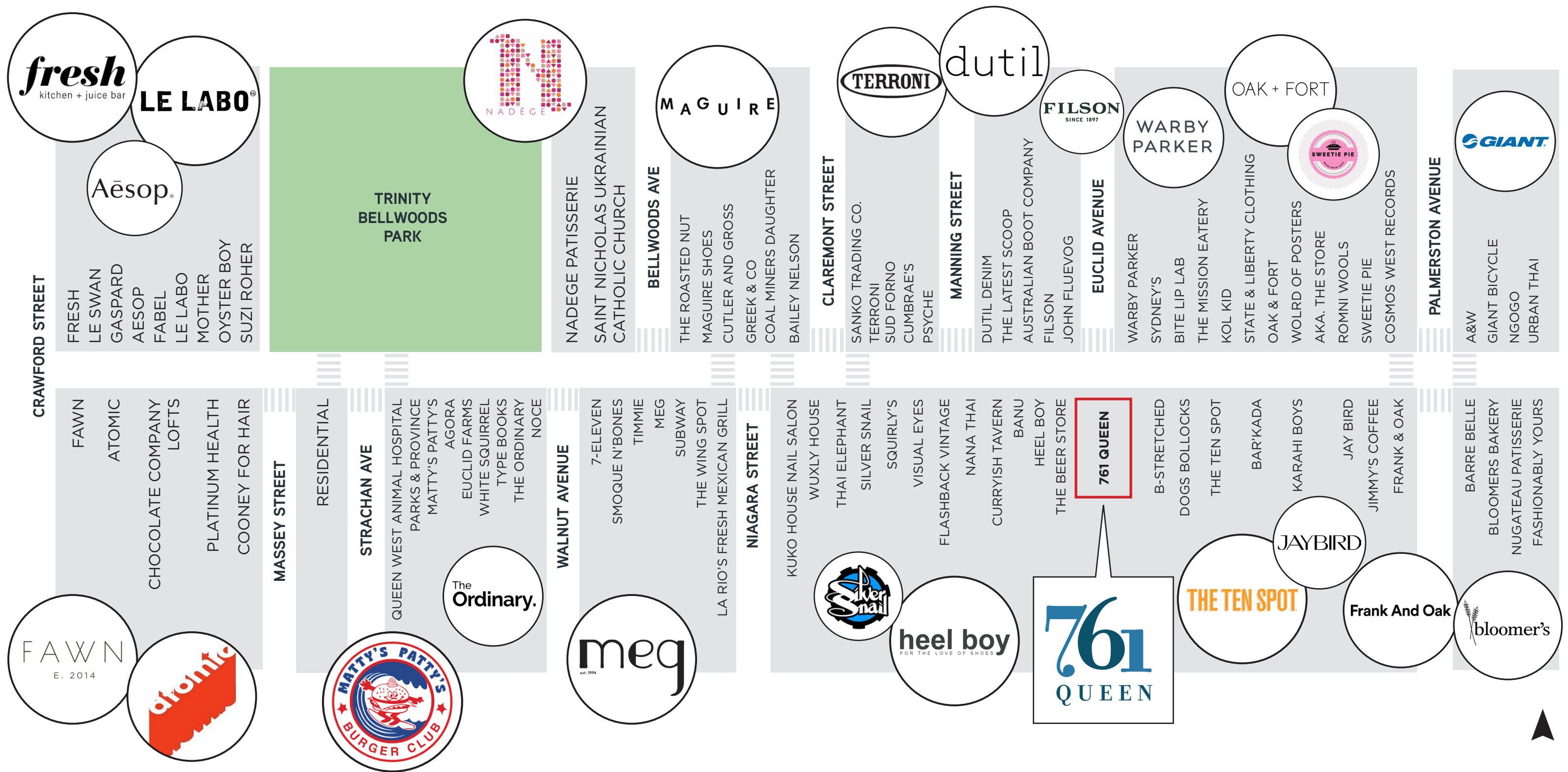
THE NEIGHBOURHOOD
WEST QUEEN WEST

761 Queen Street West is located in the heart of West Queen West, a highly desirable neighbourhood in Toronto's downtown west. This neighbourhood is known as Toronto's creative heart and is home to hundreds of restaurants, bars and independent fashion retailers and boutique hotels. Popular neighbourhood retailers and restaurants include Terroni, Matty's Patty's, Warby Parker, Frank and Oak, John Fluevog Shoes, Giant Bikes, Heel Boy, Australian Boot Company and many more.

Steps from the property is Trinity Bellwoods Park, Toronto's largest park in the downtown core. The park is a huge draw to the area, especially in the summer months, where people flock to the park to picnic, play sports or walk their dogs.

The property is serviced by the 501 Queen streetcar, North America's longest streetcar route, which stretches west to east from Long Brand Loop all the way to Neville Park Loop.

Neighbouring Retailers







Contact

ARLIN MARKOWITZ*
Executive Vice President
416 815 2374
arlin.markowitz@cbre.com

ALEX EDMISON*
Senior Vice President
416 874 7266
alex.edmison@cbre.com

JACKSON TURNER**
Senior Vice President
416 815 2394
jackson.turner@cbre.com

TEDDY TAGGART*
Vice President
416 847 3254
teddy.taggart@cbre.com

EMILY EVERETT*
Sales Associate
647 943 4185
emily.everett@cbre.com

*Sales Representative **Broker

CBRE

This disclaimer shall apply to CBRE Limited, Real Estate Brokerage, and to all other divisions of the Corporation; to include all employees and independent contractors ("CBRE"). The information set out herein, including, without limitation, any projections, images, opinions, assumptions and estimates obtained from third parties (the "Information") has not been verified by CBRE, and CBRE does not represent, warrant or guarantee the accuracy, correctness and completeness of the Information. CBRE does not accept or assume any responsibility or liability, direct or consequential, for the Information or the recipient's reliance upon the Information. The recipient of the Information should take such steps as the recipient may deem necessary to verify the Information prior to placing any reliance upon the Information. The Information may change and any property described in the Information may be withdrawn from the market at any time without notice or obligation to the recipient from CBRE. CBRE and the CBRE logo are the service marks of CBRE Limited and/or its affiliated or related companies in other countries. All other marks displayed on this document are the property of their respective owners. All Rights Reserved.