

THE WHITE PORTFOLIO

OFFERED BY

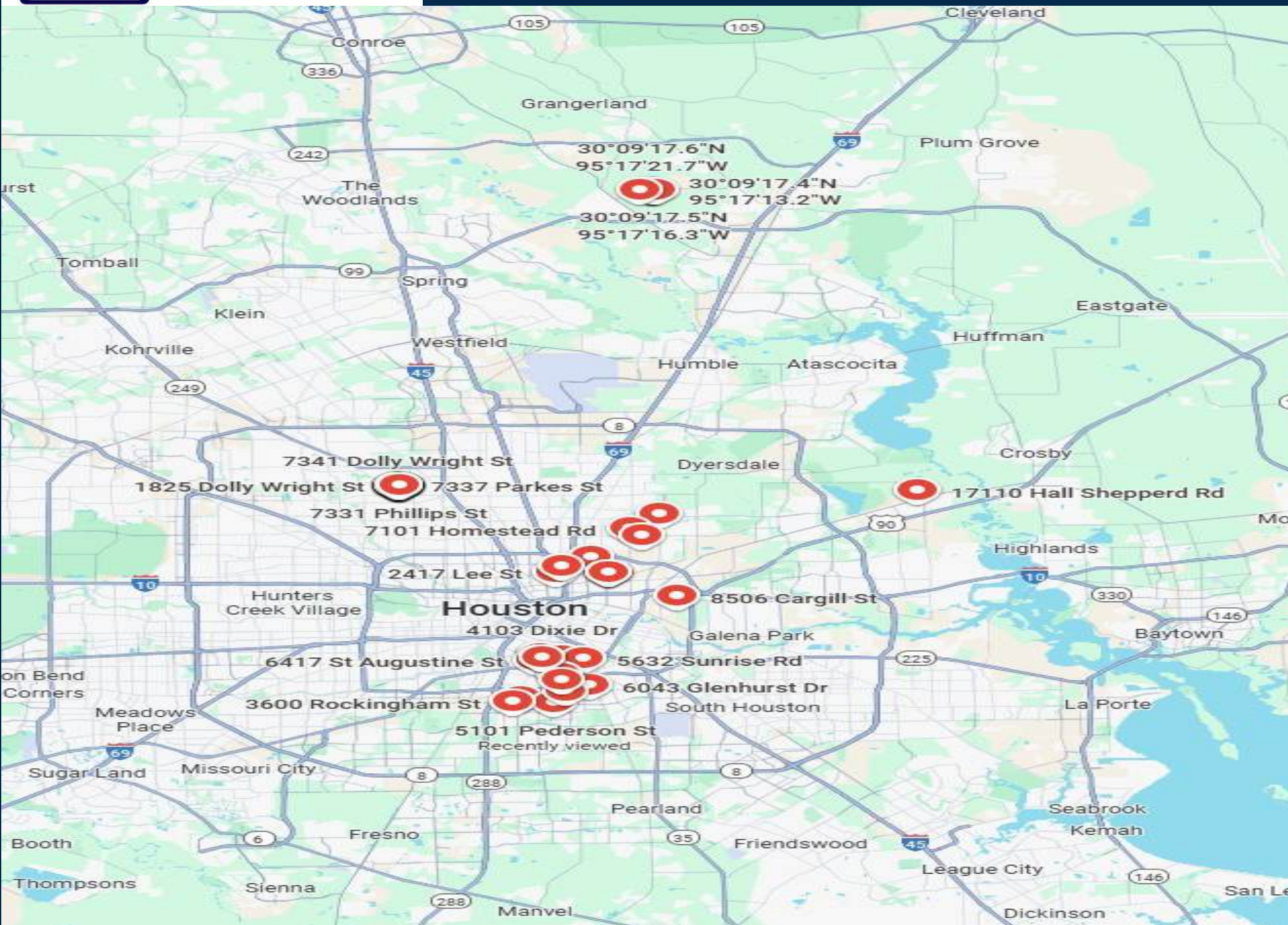
WOMACK DEVELOPMENT & INVESTMENT REALTORS



WOMACK DEVELOPMENT
& INVESTMENT REALTORS
www.womackdevelopment.com

White Portfolio

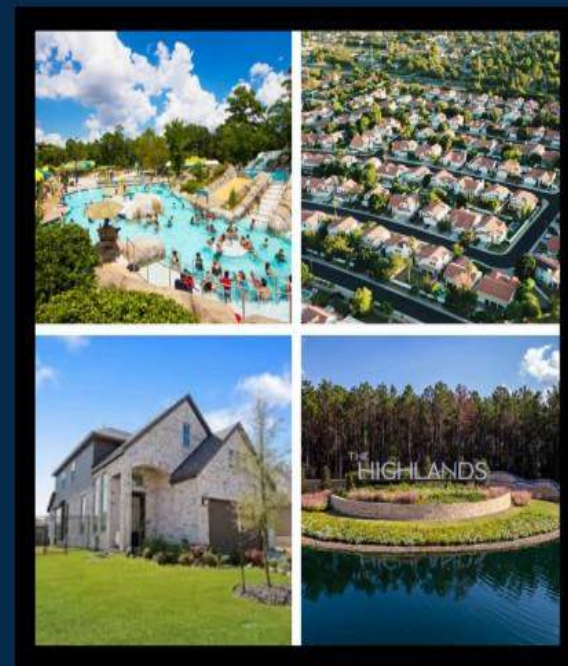
- 44-Homes
- 19-Lots
- Apprx 10-+ Combined Acres
- Near Or In Investment Zones
- All Located In Harris & Montgomery County
- Multiple Neighborhoods Within The County
- Multiple Deployment Options
- Ready For Redevelopment
- New Development Within Blocks



PORTER

Welcome to **Porter**, a fast-growing community in Montgomery County that combines suburban comfort with strategic access to the Greater Houston area. Located along Highway 59/Interstate 69 and just minutes from George Bush Intercontinental Airport, Porter offers excellent connectivity for both residents and businesses.

With rapid residential expansion, strong school systems, and new commercial developments, Porter is emerging as a prime location for investment. The community's affordability, available land, and proximity to major employment centers make it an attractive option for real estate, retail, and infrastructure growth.



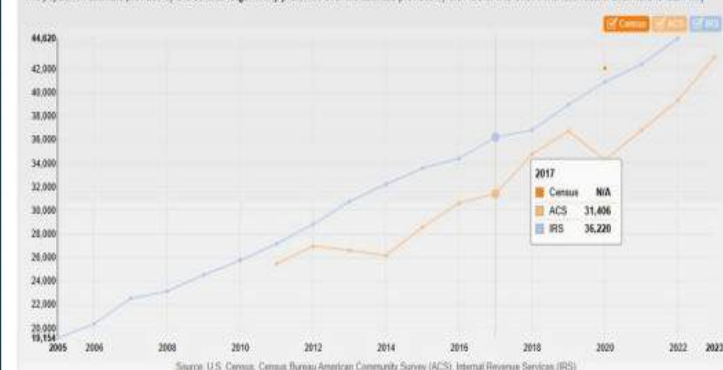
ZIP code 77365 is located in eastern Texas and covers a slightly less than average land area compared to other ZIP codes in the United States. It also has a slightly less than average population density.

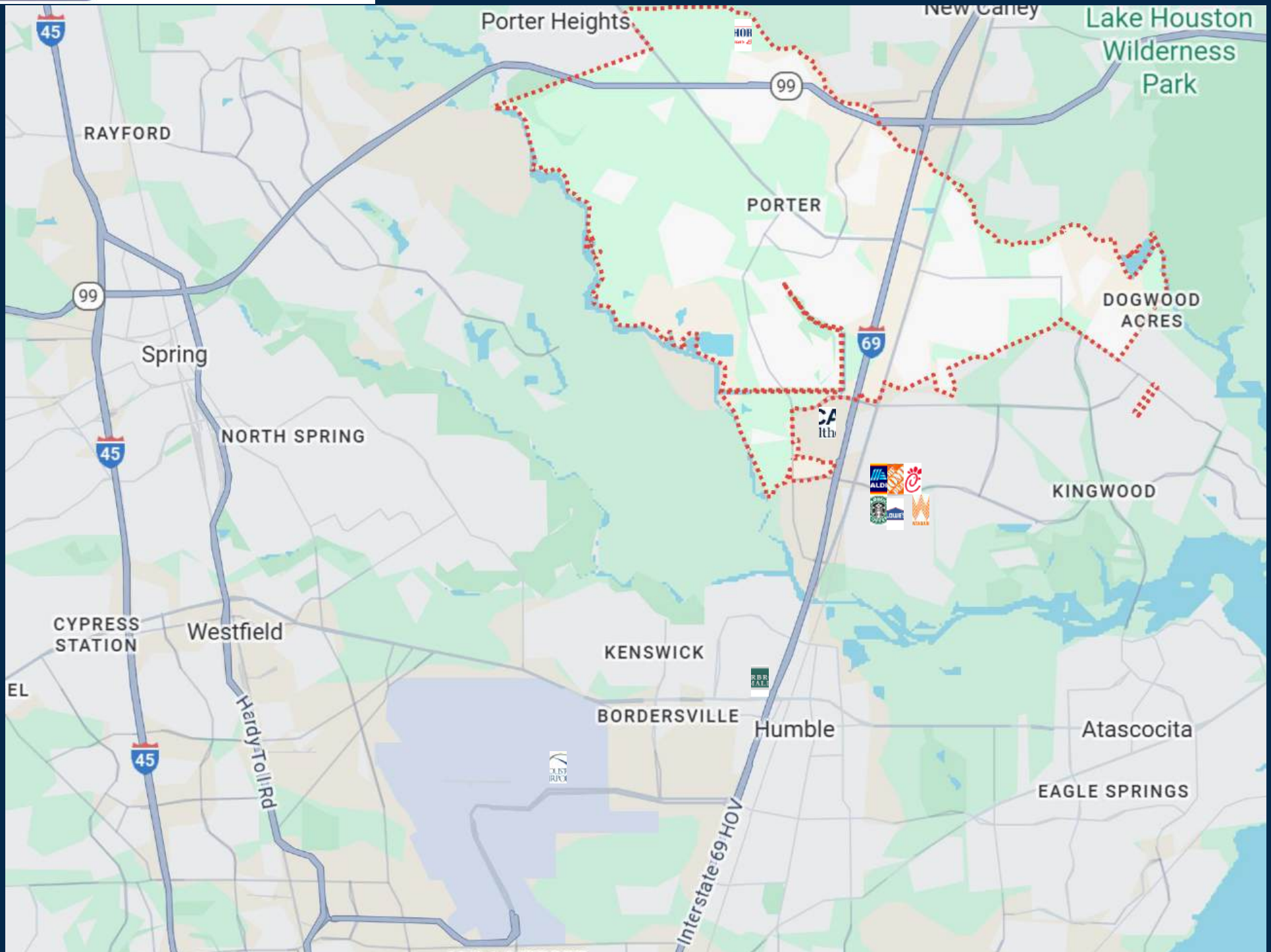
The people living in ZIP code 77365 are primarily white. The number of people in their late 20s to early 40s is extremely large while the number of middle aged adults is large. There are also a small number of single adults and a large number of families. The percentage of children under 18 living in the 77365 ZIP code is large compared to other areas of the country.

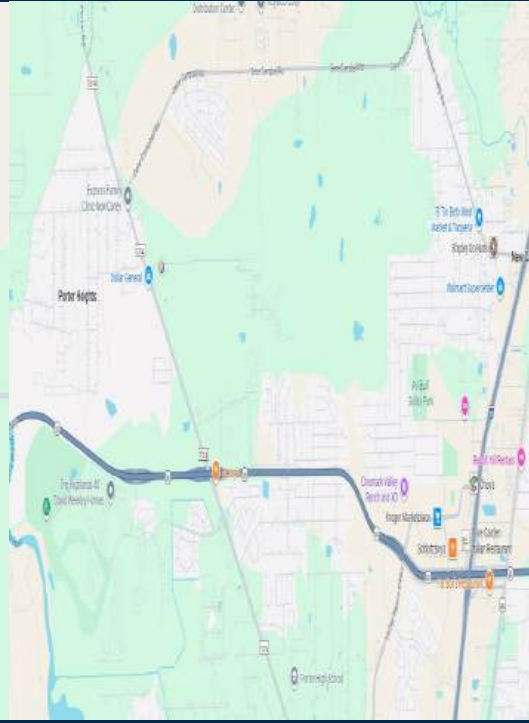
Population	42,086 (source: Census)	Land Area	41.37 sq mi
Population Density	1,017 people per sq mi	Water Area	0.51 sq mi
Housing Units	14,455 (source: Census)	Occupied Housing Units	13,544 (source: Census)
Median Home Value	\$261,200 (source: ACS)	Median Household Income	\$96,093 (source: ACS)

Estimated Population over Time

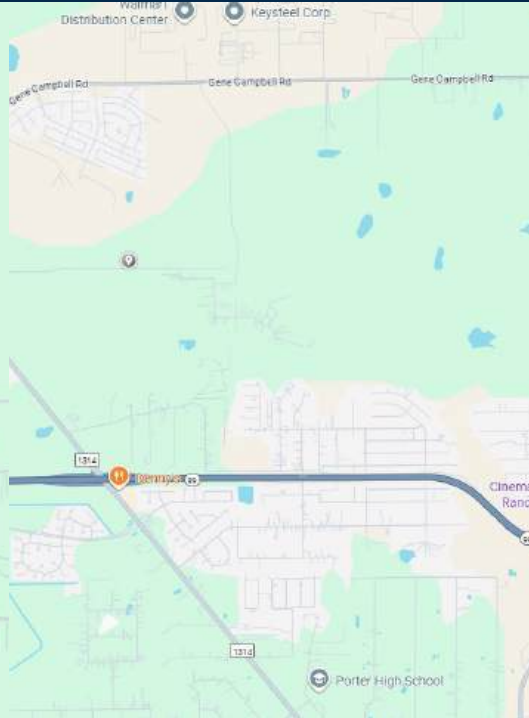
The population estimate provided by the census is generally preferred over the estimate provided by the ACS or IRS even if it is less recent. Click here to learn why







0 Rolling Hill Oaks



0 Rolling Hill Oaks

People Facts and Stats ⓘ

	77365	Montgomery County	Texas	USA
Population	43K	655K	29.64M	332.39M
Population Density per Sq Mi	988	628	113	94
Pop Change since 2020	+18.3%	+14.8%	+5.9%	+0%
Median Age	34	37	36	39
Male / Female Ratio	50%	50%	50%	50%

Economic Facts and Stats ⓘ

	77365	Montgomery County	Texas	USA
Income Per Capita	\$40,266	\$48,550	\$39,446	\$43,289
Median Household Income	\$90,741	\$97,266	\$76,292	\$78,538
Unemployment Rate	–	4%	4.1%	4.1%
Number Unemployed	–	14K	645K	7.02M
Number Employed	–	350K	15.2M	163.37M
Number in Labor Force	–	364K	15.84M	170.38M

THE WHITE PORTFOLIO



**WOMACK DEVELOPMENT
& INVESTMENT REALTORS**
www.womackdevelopment.com

Broker: Gerald Womack

Agent: Larry Oneal, Timothy Ford

Phone: 713-523-7402

Email: tford@womackdevelopment.com

WOMACK DEVELOPMENT & INVESTMENT REALTORS