

\$17.50/SF Full Service in Year 1



1,596 SF Available

Property Highlights

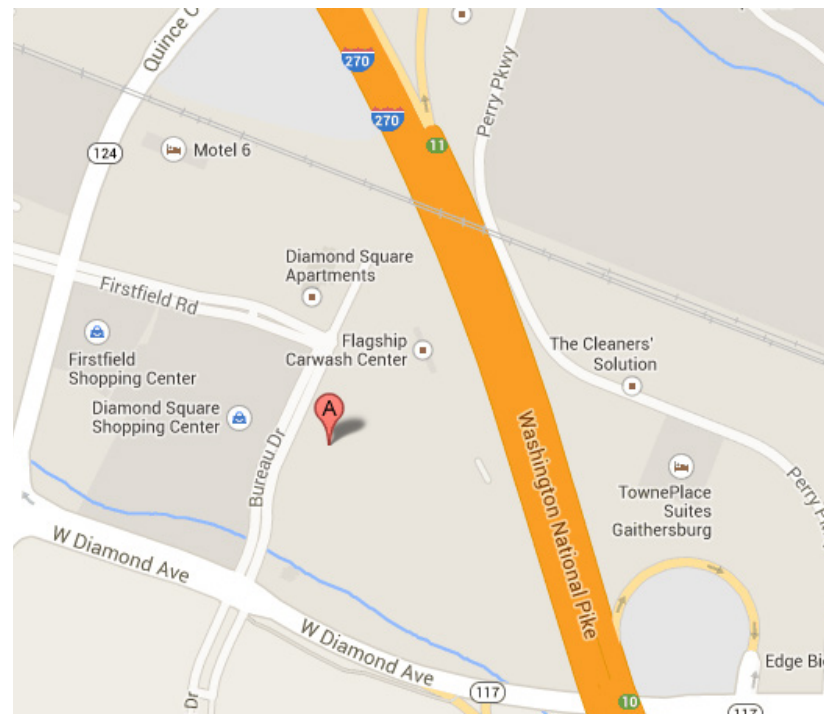
- On-site ownership and management
- Adjacent to National Institutes of Standards and Technology (NIST) and Department of Energy (DOE)
- Numerous walkable amenities including restaurants and shops
- 2 blocks from I-270/Clopper Road Interchange
- 120 free surface parking spaces available

For more information, please contact:

Peter Rosan
+1 301 634 8487
peter.rosan@cushwake.com

Megan Williams
+1 301 634 8489
megan.williams@cushwake.com

2 Bethesda Metro Center, Suite 860
Bethesda, MD 20814
+1 301 654 9700
cushmanwakefield.com





**CUSHMAN &
WAKEFIELD**

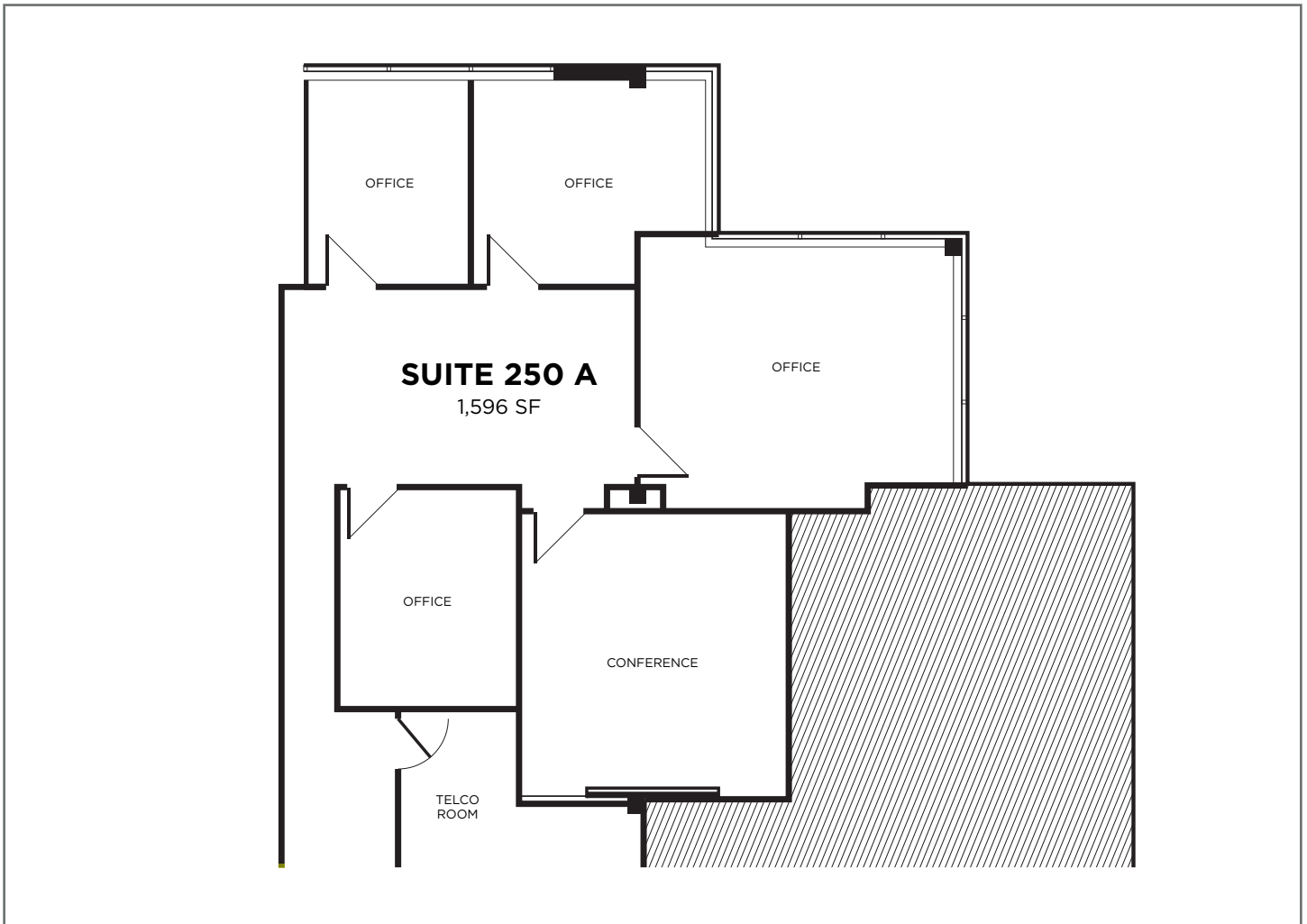
FOR LEASE

814 W. Diamond Avenue

Gaithersburg, MD 20878

Floor Plans

SUITE 250 | 1,596 SF TOTAL



For more information, please contact:

Peter Rosan

+1 301 634 8487

peter.rosan@cushwake.com

Megan Williams

+1 301 634 8489

megan.williams@cushwake.com

2 Bethesda Metro Center, Suite 860

Bethesda, MD 20814

+1 301 654 9700

cushmanwakefield.com