

500 MONTGOMERY STREET | ALEXANDRIA, VA 22314

# 500

MONTGOMERY



# LOCATION HIGHLIGHTS



## DRIVE TIMES

- 1 Minute**  
GW Memorial Parkway
- 2 Minutes**  
King Street
- 5 Minutes**  
Ronald Reagan Airport
- 7 Minutes**  
Duke Street
- 10 Minutes**  
Downtown DC

**500**  
MONTGOMERY

**OLD TOWN**

**SOUTHWEST QUADRANT**

**MARYLAND**

**WOODROW WILSON BRIDGE**

GW Parkway • I-95/I-495 • Route 1 • Route 7 • Route 236

### DEMOGRAPHICS

- Population: 34,900
- Households: 18,742
- Avg. Household Income: \$200,528
- Walk Score: 89



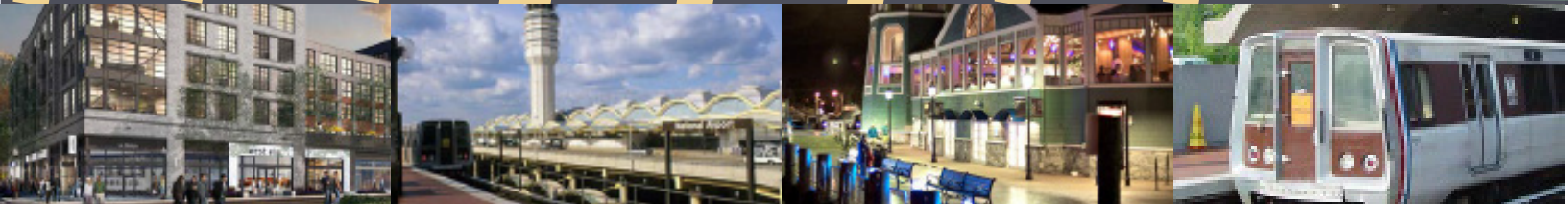
**500**  
MONTGOMERY

**EXTRA PERK**

**sport&health**

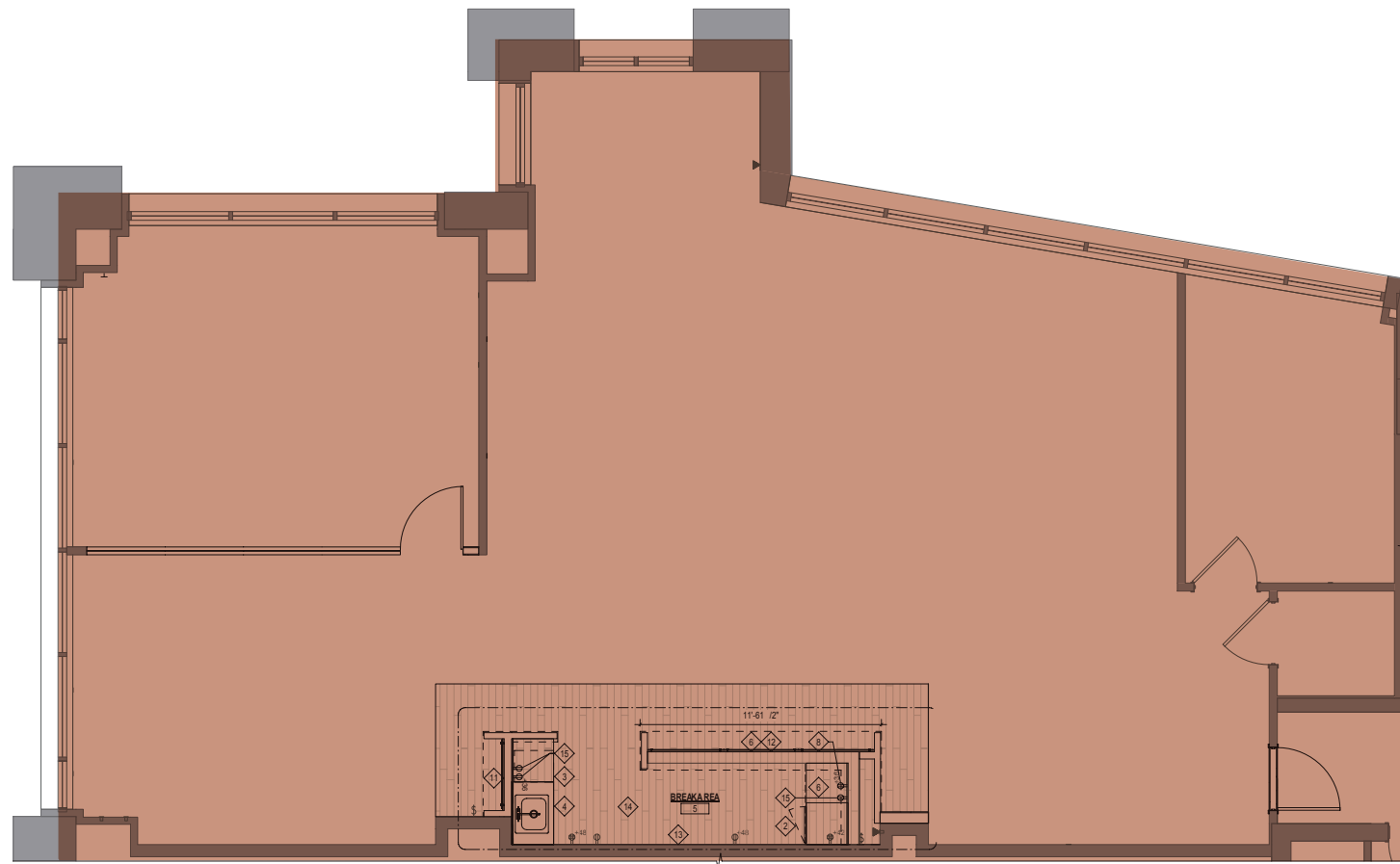
**BondVet**  
**MACMILLAN SPIRIT HOUSE**  
**ONSITE**

**a la Lucia**  
Traditional Asian Kitchen



# 2<sup>ND</sup> FLOOR

Suite 215 | 2,747 SF  
Available 8.1.2024



# 5<sup>TH</sup> FLOOR

Suite 500 | 5,595 SF  
Available 8.1.2024



**500**  
MONTGOMERY

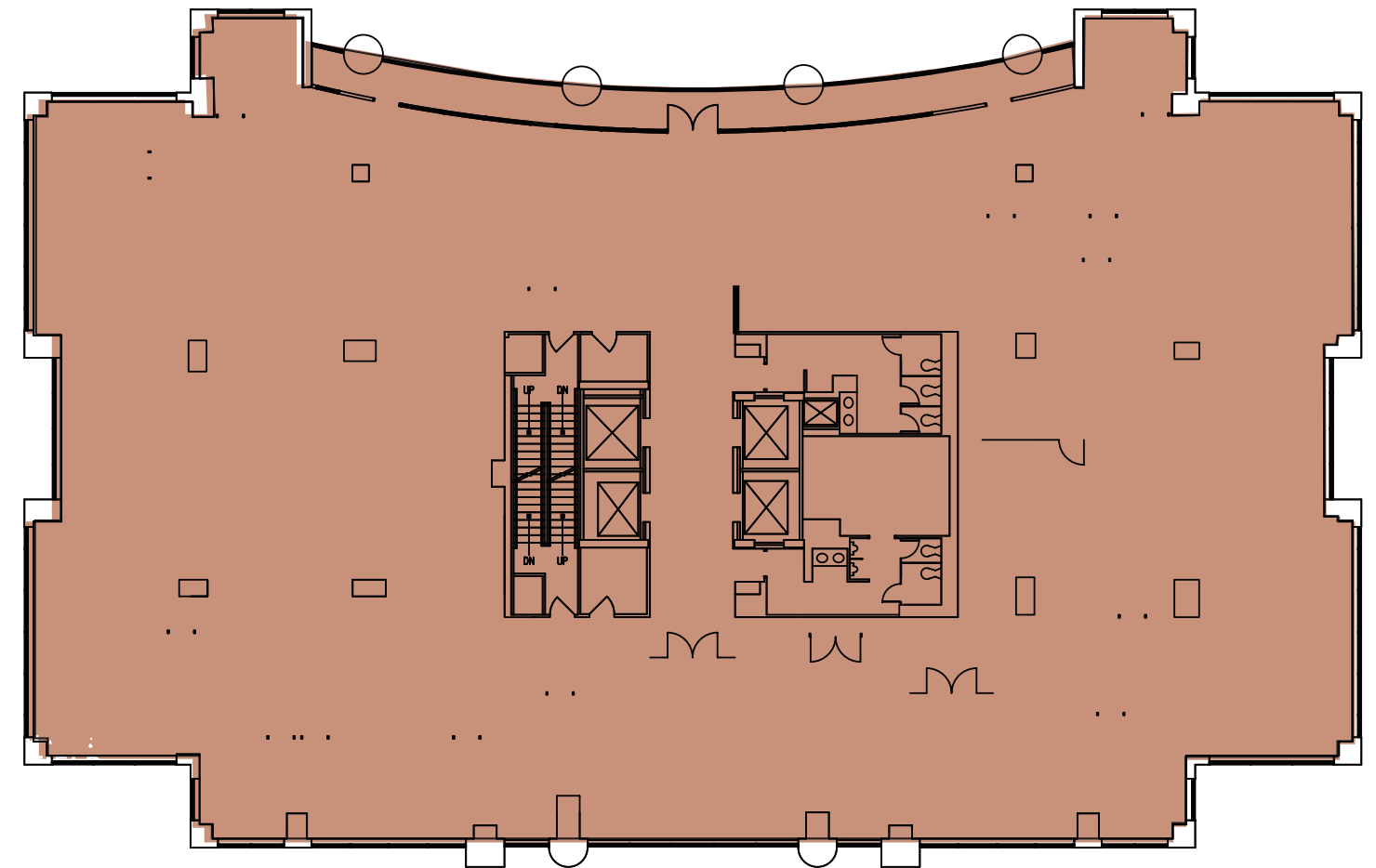
# 6<sup>TH</sup> FLOOR

Suite 600 & 625-650 | 5,039 SF



# 7<sup>TH</sup> FLOOR

Suite 700 | 14,625 SF



500 MONTGOMERY STREET | ALEXANDRIA, VA 22314

# 500

MONTGOMERY

For More Information, Contact:

**AUSTIN HIGH**

703.596.1012

[austin.high@streamrealty.com](mailto:austin.high@streamrealty.com)

**ERIK MCLAUGHLIN**

703.439.1137

[erik.mclaughlin@streamrealty.com](mailto:erik.mclaughlin@streamrealty.com)

---

Copyright © 2024 Stream Realty Partners, All rights reserved.

The information contained herein was obtained from sources believed reliable; however, Stream Realty Partners, L.P. make no guarantees, warranties, or representations as to the completeness or accuracy thereof. The presentation of this property is submitted subject to errors, change of price, or conditions, prior sale or lease, or withdrawal without notice.