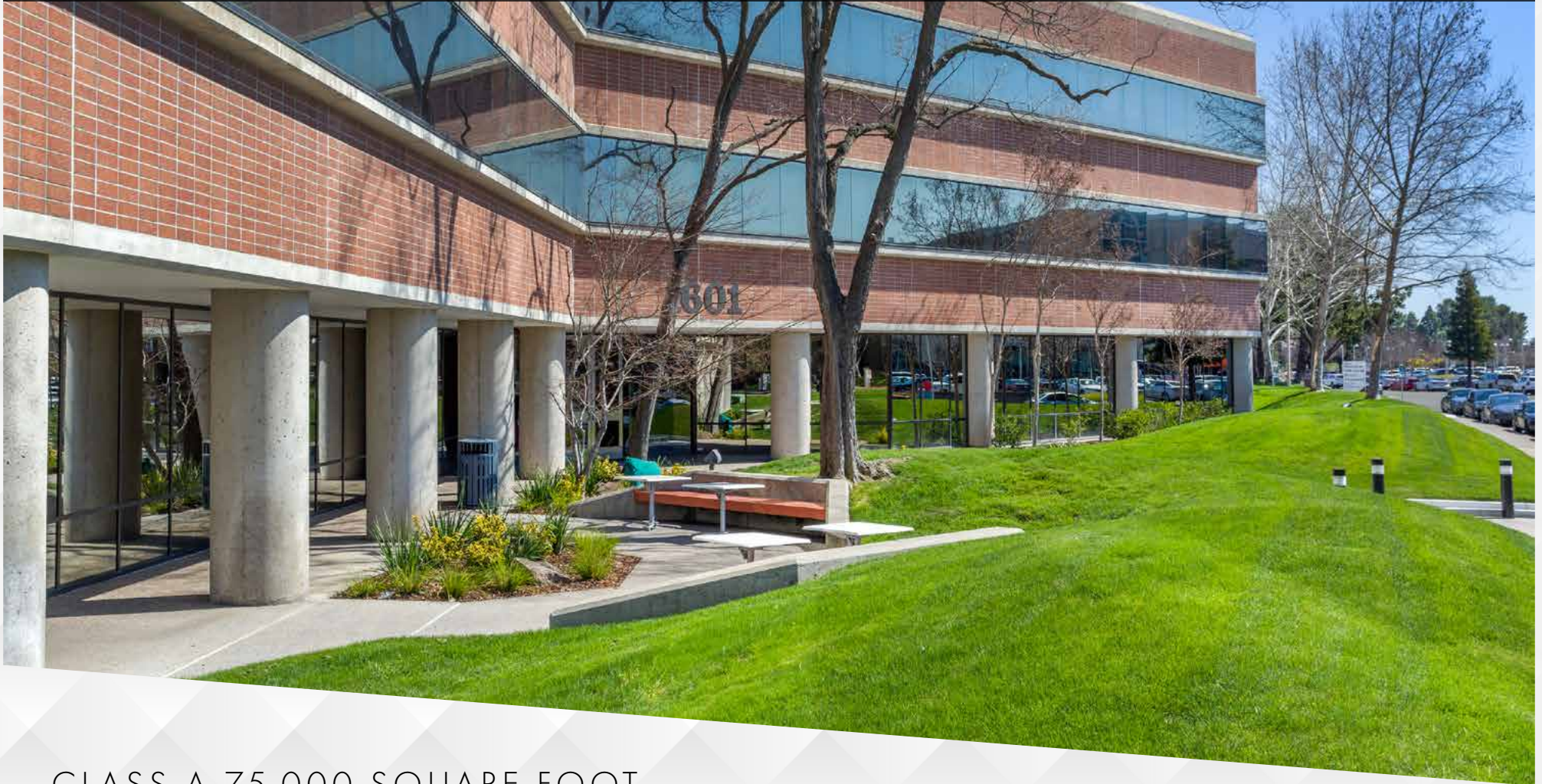


# POINT WEST EXPOSITION CENTRE

1601 RESPONSE ROAD, SACRAMENTO, CA



CLASS A 75,000 SQUARE FOOT  
PROFESSIONAL OFFICE BUILDING

**NEWMARK**



Exclusively Marketed By:

**Jack Blackmon**  
916.494.2349  
jack.blackmon@nrmk.com  
CA RE License #01999561

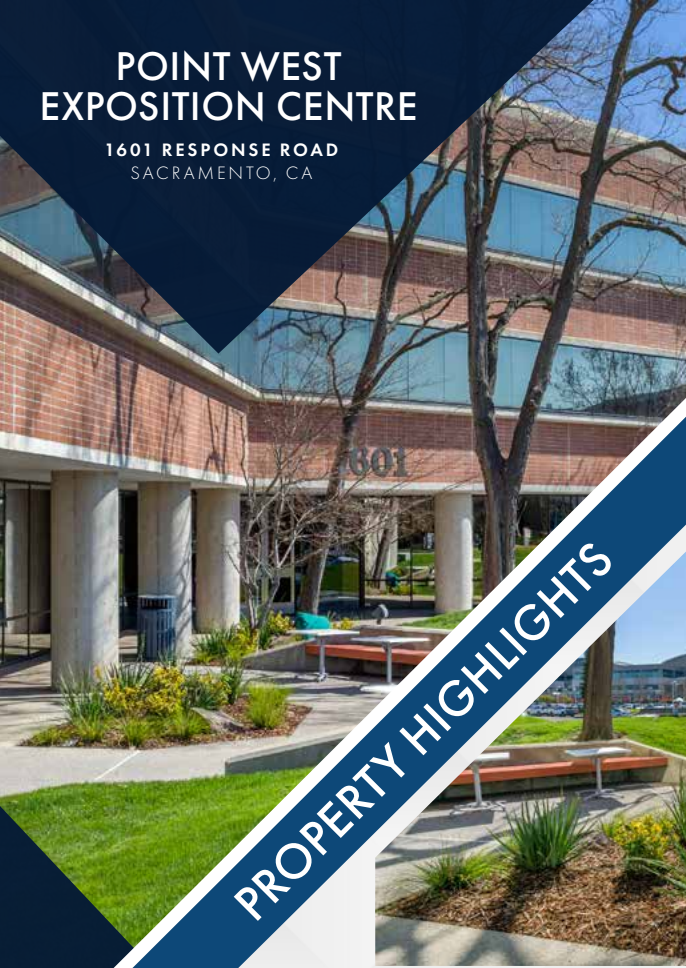
**Jodie Robinson**  
916.569.2318  
jodie.robinson@nrmk.com  
CA RE License #022143577

**Chris Lemmon**  
916.367.6349  
chris.lemmon@nrmk.com  
CA RE License #01506816

# POINT WEST EXPOSITION CENTRE

1601 RESPONSE ROAD  
SACRAMENTO, CA

## PROPERTY HIGHLIGHTS



Onsite training and conference room



Shaded outdoor patio areas



Minutes from Downtown Sacramento



Immediate freeway access to Business Hwy 80



Short walk to Arden Fair Mall



Abundant onsite parking free of charge



High visibility building and monument signage



Cafe and fitness center within parking lot



Expansive windowline



Renovated common areas

## CONCIERGE SERVICES



Basin Street Properties is proud to announce our newest tenant amenity – Concierge Services. Tenants have access to family entertainment, travel arrangements, and a host of other business services.



### Personal Services

- Housekeeping / sitting
- Pet sitting / grooming
- Auto detailing / maintenance
- Dry cleaning / laundry
- Fitness trainer / massage services
- Customized personal shopping



### Entertainment Services

- Tickets for concerts, theater and sporting events
- Restaurant reservations
- Visiting client and guest arrangements



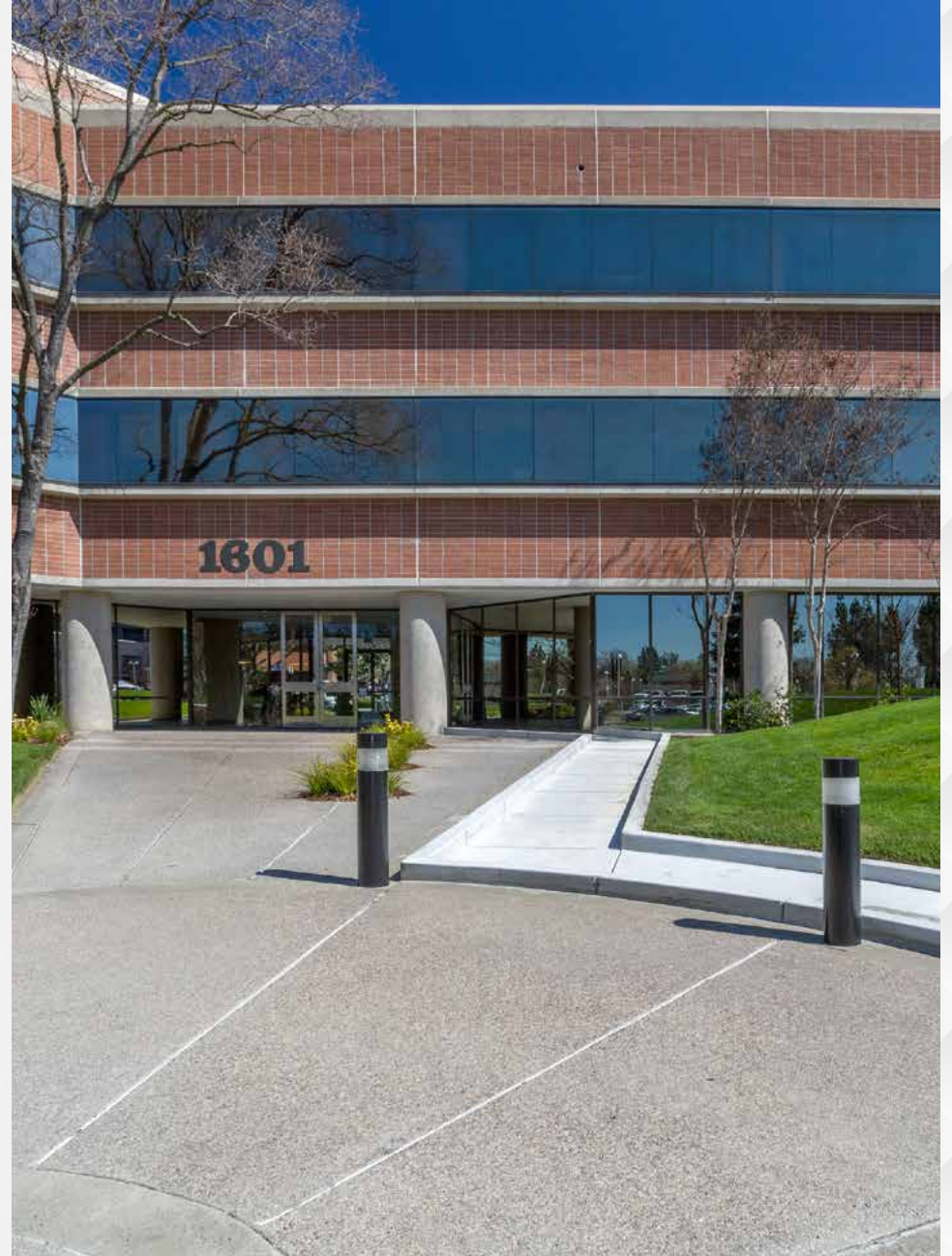
### Event and Meeting Services

- Site selection
- Catering, food and beverage arrangements
- Multi-media / A.V. arrangements

# POINT WEST EXPOSITION CENTRE

1601 RESPONSE ROAD  
SACRAMENTO, CA

## FIVE-STORY CLASS A OFFICE BUILDING



TRAINING ROOM - COMMON AREA



# POINT WEST EXPOSITION CENTRE

1601 RESPONSE ROAD  
SACRAMENTO, CA

## AMENITIES MAP

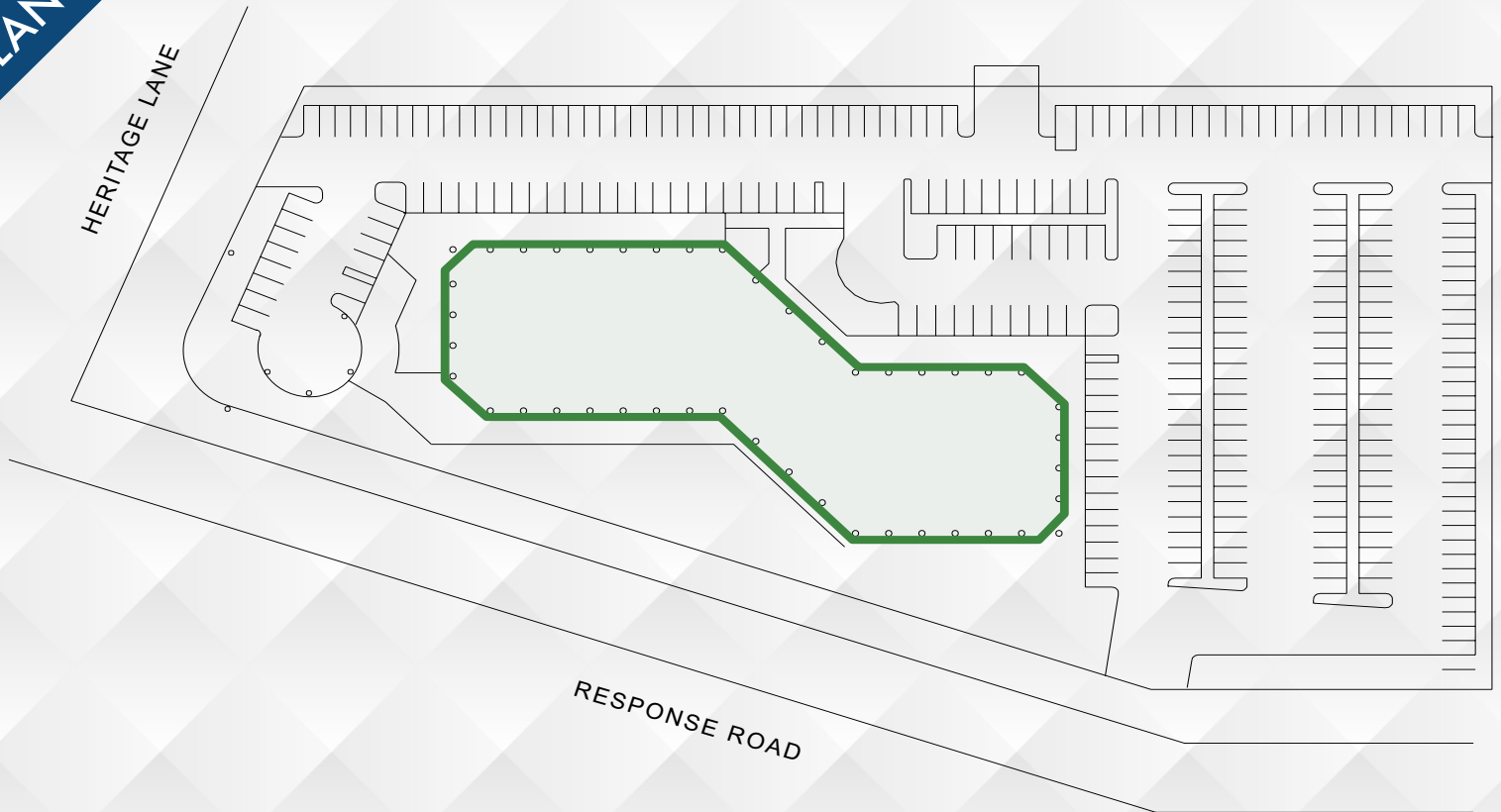


# POINT WEST EXPOSITION CENTRE

1601 RESPONSE ROAD  
SACRAMENTO, CA



## SITE PLAN

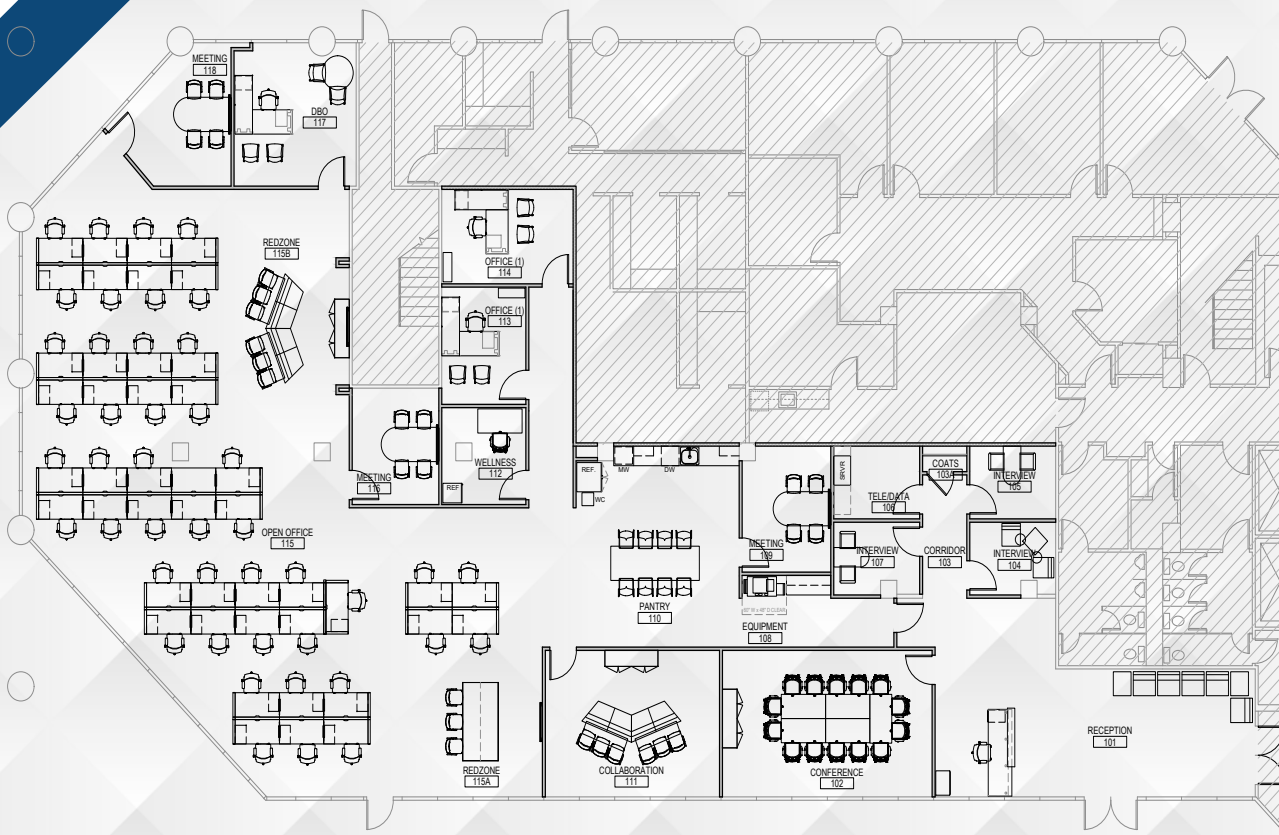
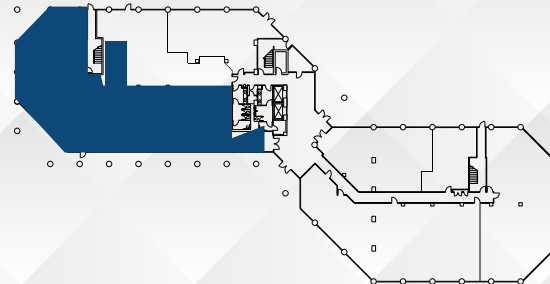


# POINT WEST EXPOSITION CENTRE

1601 RESPONSE ROAD  
SACRAMENTO, CA



## FLOOR PLANS



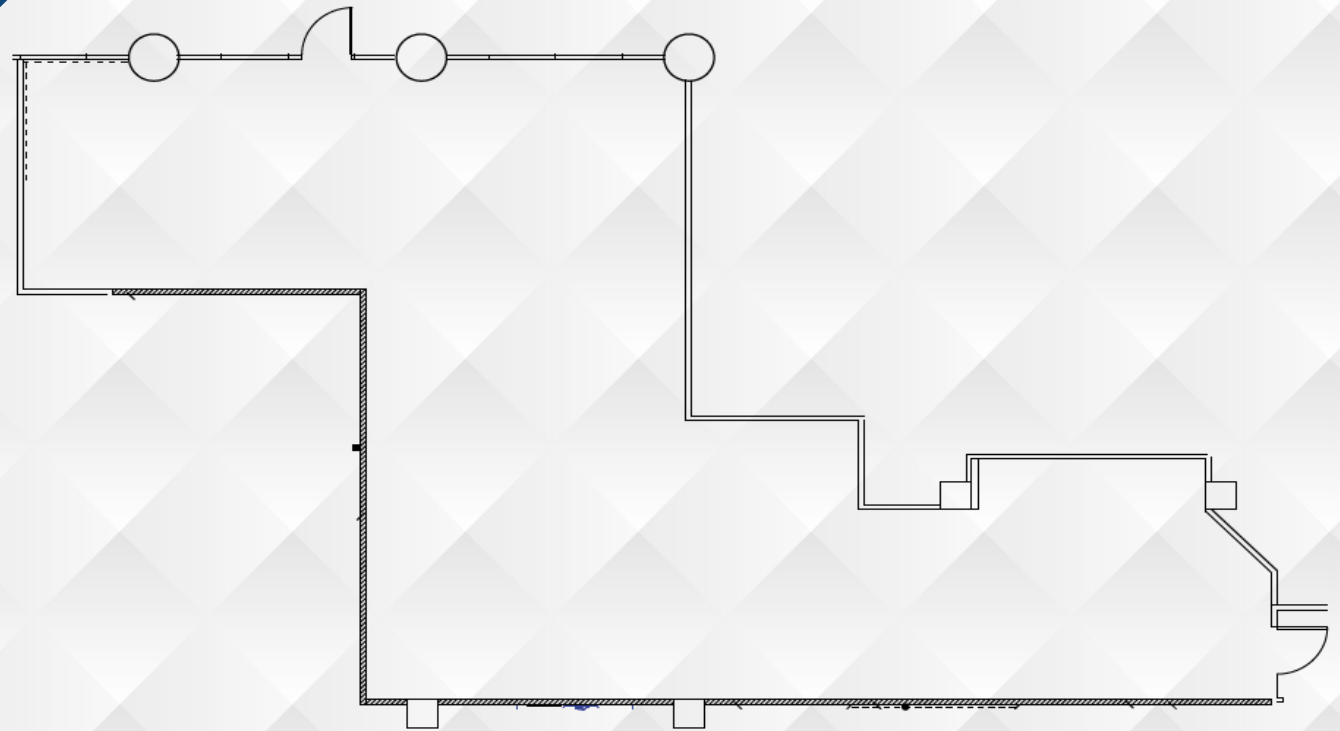
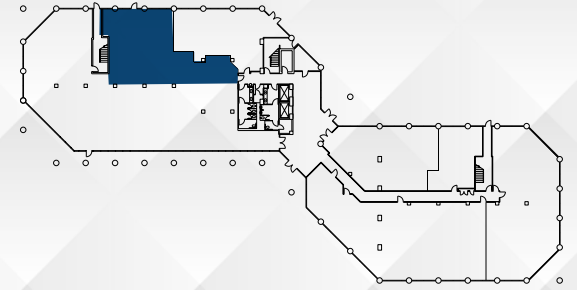
**FIRST FLOOR | 6,906 RSF | SUITE 100**

# POINT WEST EXPOSITION CENTRE

1601 RESPONSE ROAD  
SACRAMENTO, CA



## FLOOR PLANS

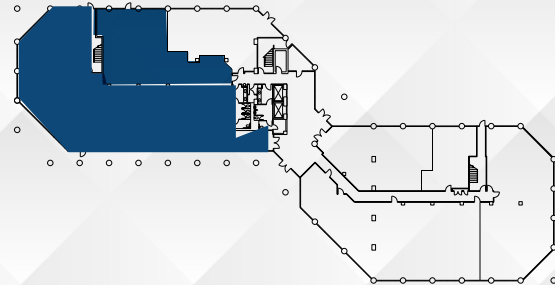
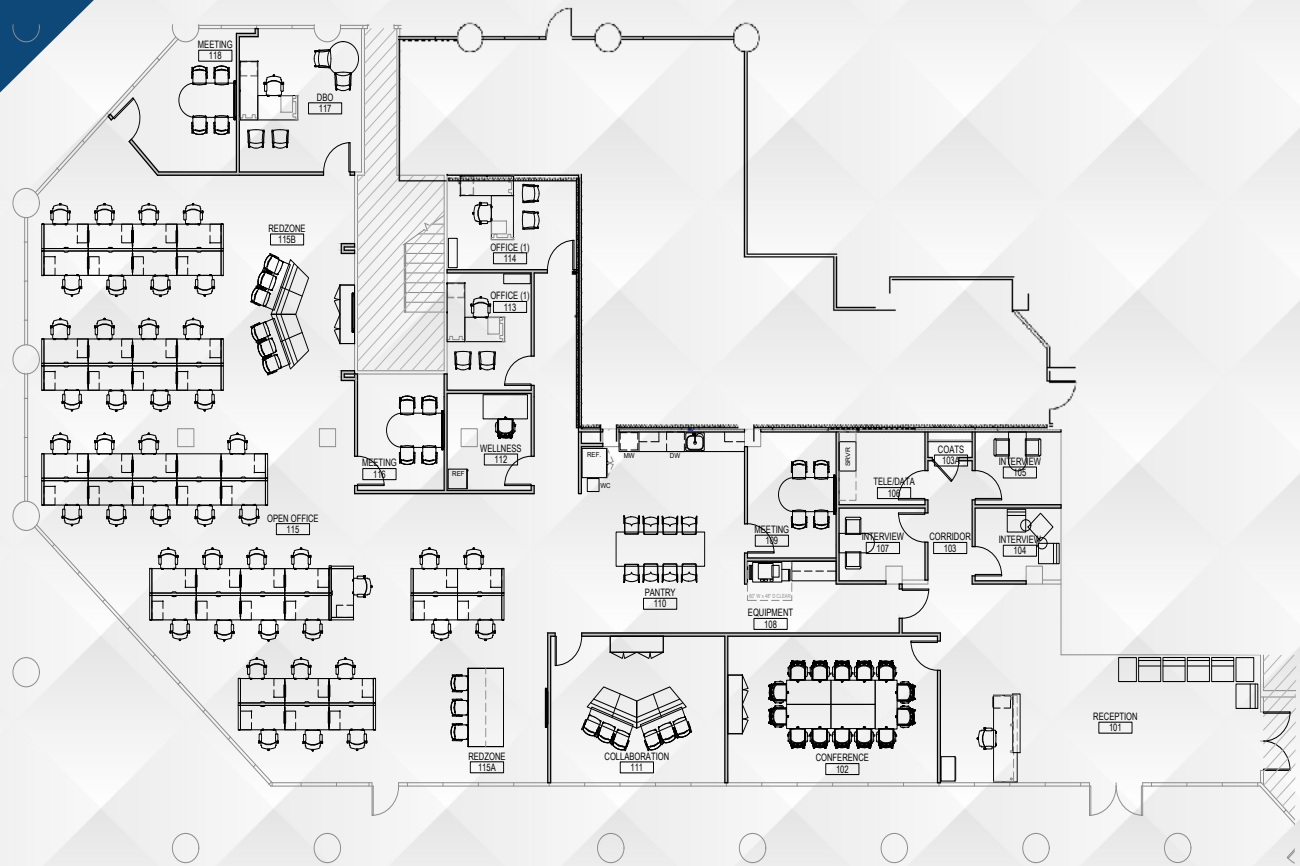


**FIRST FLOOR | 1,674 RSF | SUITE 120**

# POINT WEST EXPOSITION CENTRE

1601 RESPONSE ROAD  
SACRAMENTO, CA

## FLOOR PLANS



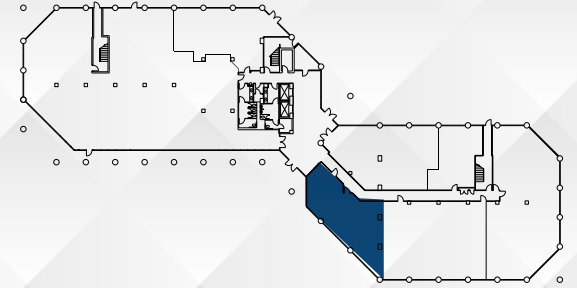
**FIRST FLOOR | SUITE 100 & 120 (CONTIGUOUS 1,674 - 8,580 RSF)**

# POINT WEST EXPOSITION CENTRE

1601 RESPONSE ROAD  
SACRAMENTO, CA



## FLOOR PLANS



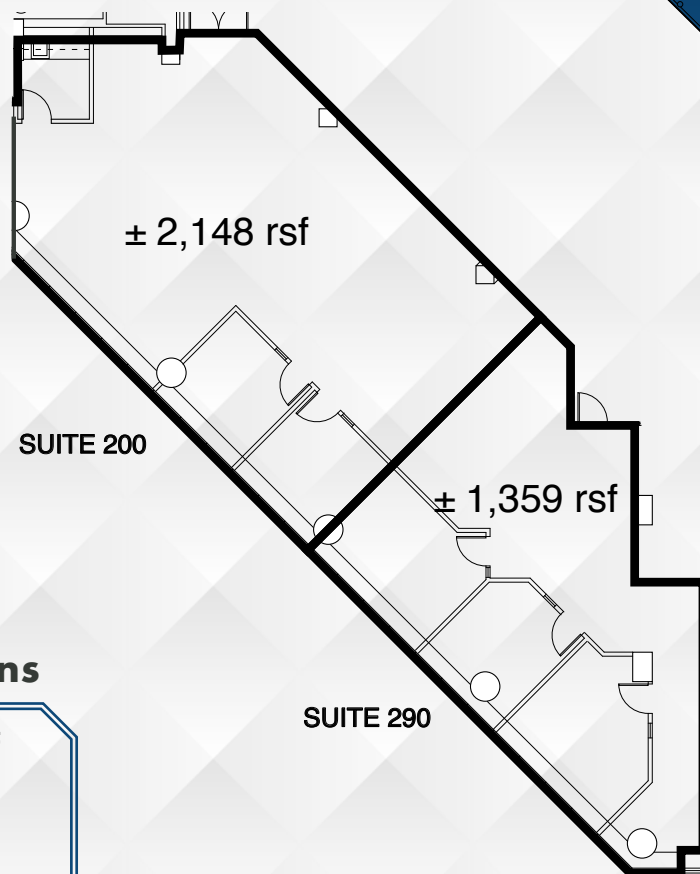
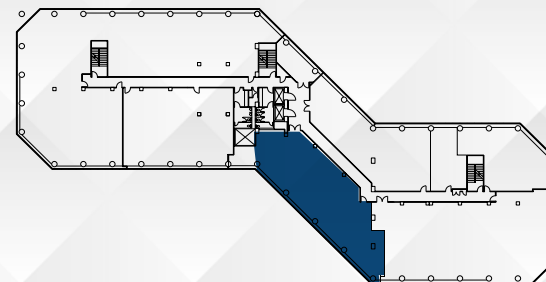
±1,424 RSF

**FIRST FLOOR | 1,424 RSF | SUITE 160**

# POINT WEST EXPOSITION CENTRE

1601 RESPONSE ROAD  
SACRAMENTO, CA

## FLOOR PLANS



### Divisible Options

Suite 200: ±2,148 RSF

Suite 290: ±1,359 RSF

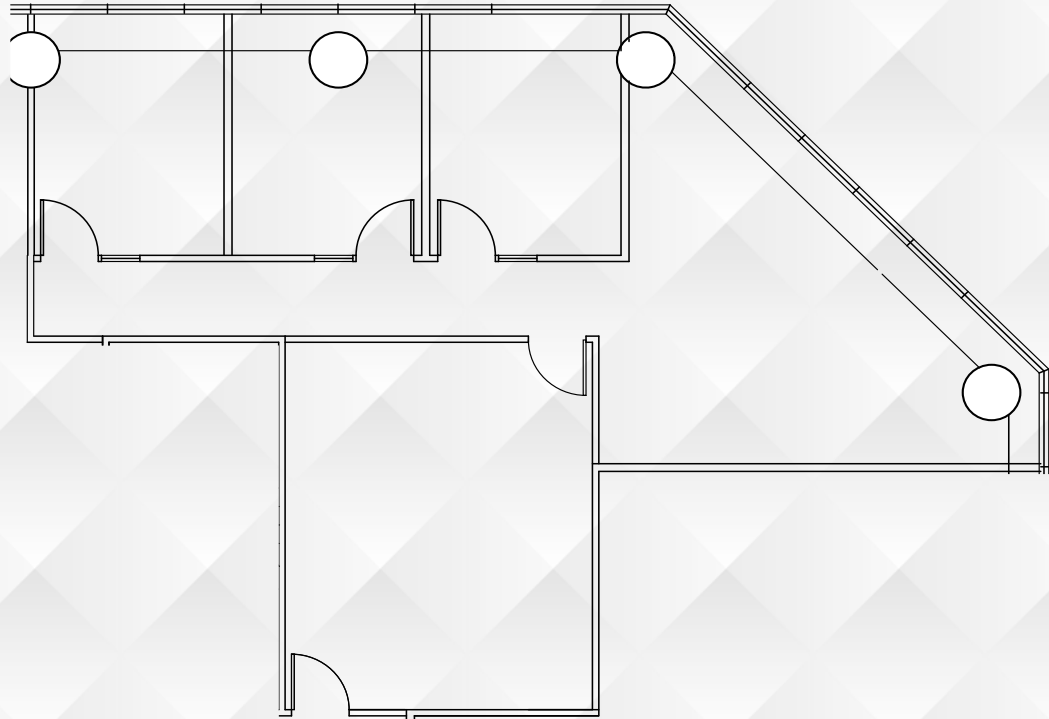
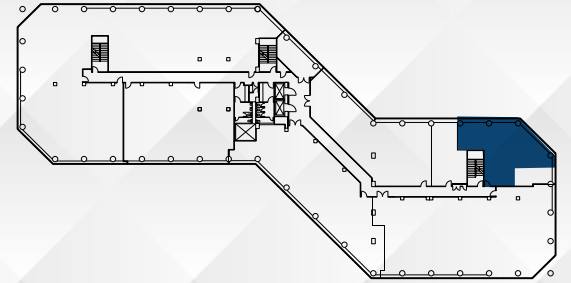
**SECOND FLOOR | 3,507 RSF | SUITE 200 (DIVISIBLE 1,359 SF TO 3,507 SF)**

# POINT WEST EXPOSITION CENTRE

1601 RESPONSE ROAD  
SACRAMENTO, CA



## FLOOR PLANS

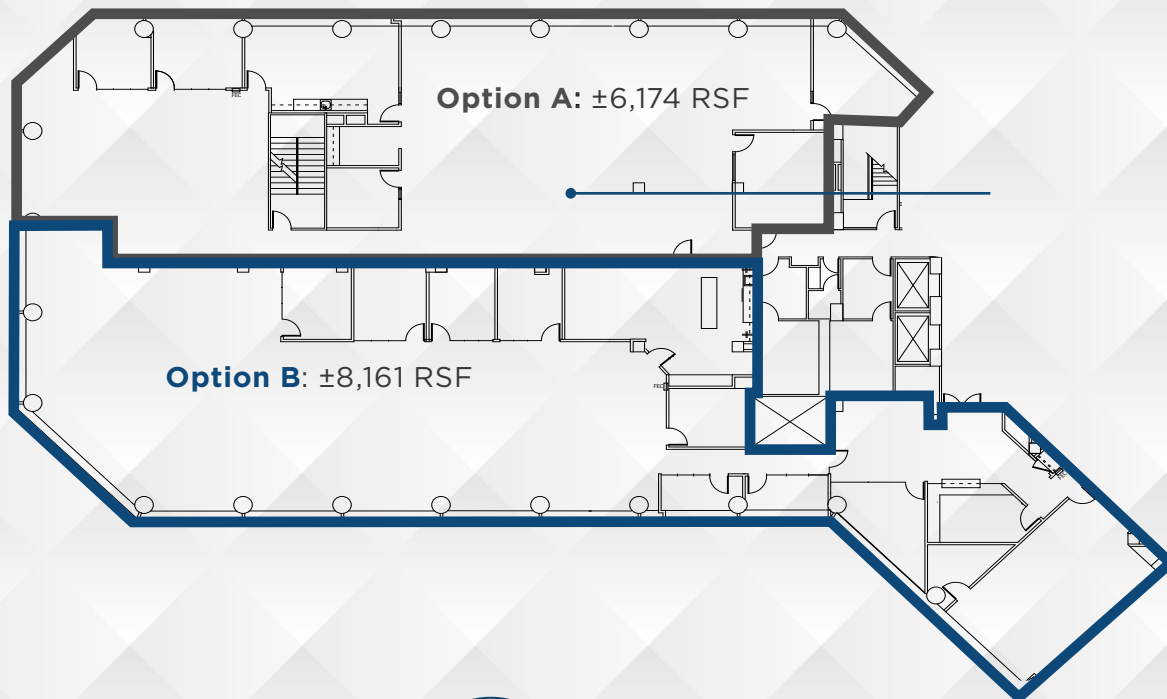
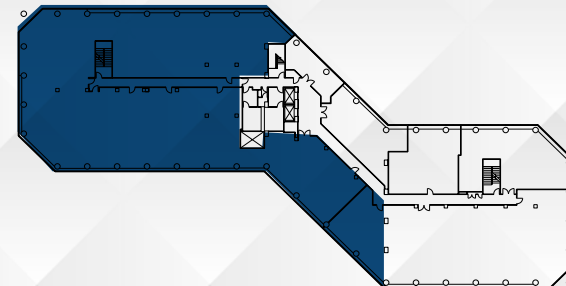


**SECOND FLOOR | 1,432 RSF | SUITE 255**

# POINT WEST EXPOSITION CENTRE

1601 RESPONSE ROAD  
SACRAMENTO, CA

## FLOOR PLANS



### Divisible Options

Option A: ±6,174 RSF  
Option B: ±8,161 RSF

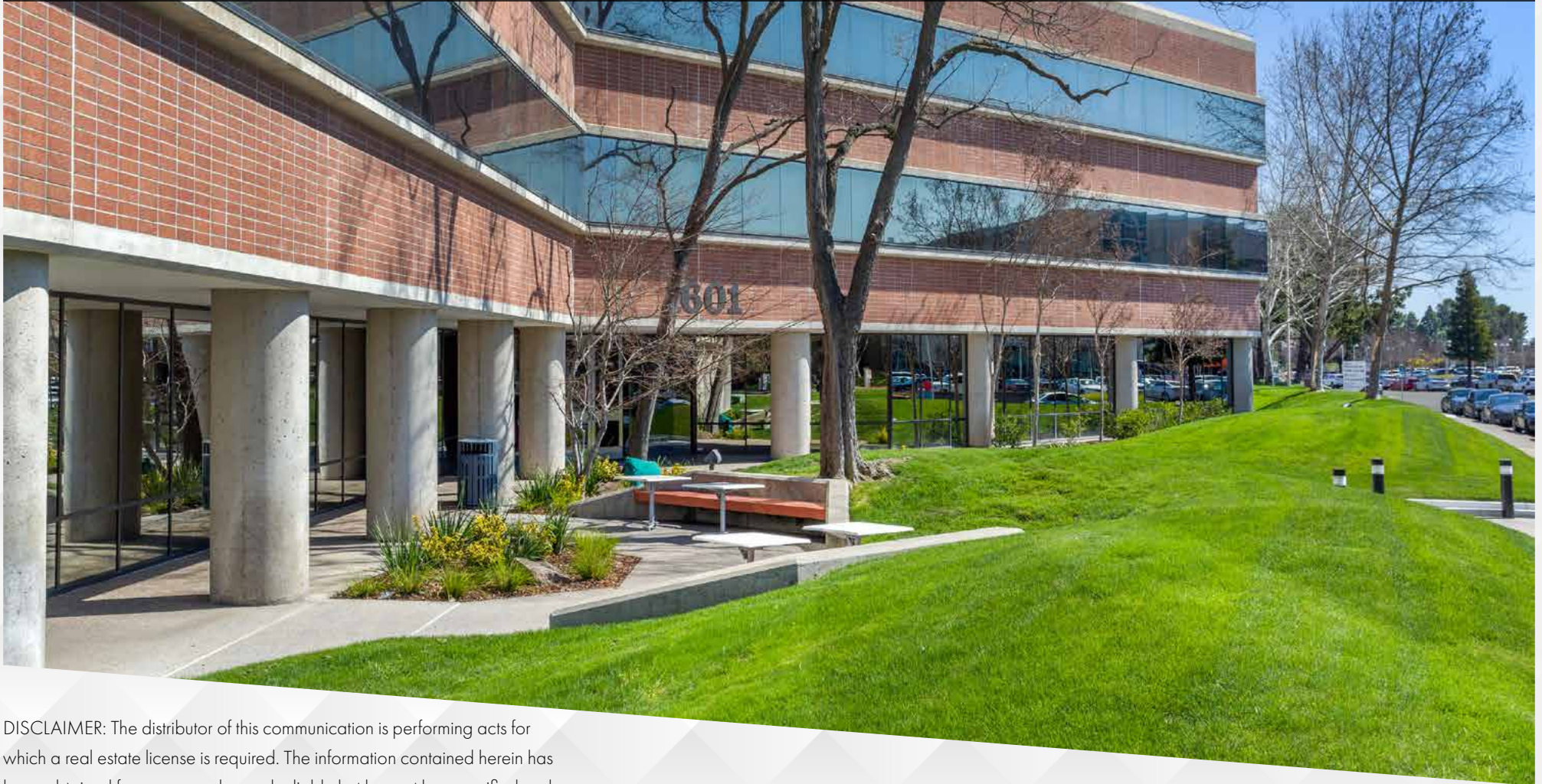


VIEW  
VIRTUAL  
TOUR

**THIRD FLOOR | 14,335 RSF | SUITE 300 (DIVISIBLE 6,174 SF TO 14,335 SF)**

# POINT WEST EXPOSITION CENTRE

1601 RESPONSE ROAD, SACRAMENTO, CA



DISCLAIMER: The distributor of this communication is performing acts for which a real estate license is required. The information contained herein has been obtained from sources deemed reliable but has not been verified and no guarantee, warranty or representation, either express or implied, is made with respect to such information. Terms of sale or lease and availability are subject to change or withdrawal without notice.

**NEWMARK**



Exclusively Marketed By:

**Jack Blackmon**

916.494.2349

jack.blackmon@nrmk.com

CA RE License #01999561

**Jodie Robinson**

916.569.2318

jodie.robinson@nrmk.com

CA RE License #022143577

**Chris Lemmon**

916.367.6349

chris.lemmon@nrmk.com

CA RE License #01506816