



FOR SUBLEASE

# Former Urgent Care

3580 W Maple Road  
Bloomfield, MI

## CONTACT US

**BEN AND BENJI**  
COLLIERS DETROIT REAL ESTATE



**Ben Hubert**  
248 417 7150  
ben.hubert@colliers.com



**Benji Rosenzweig**  
248 752 3762  
ben.rosenzweig@colliers.com

**Colliers Detroit**  
400 W 4<sup>th</sup> Street, Suite 350  
Royal Oak, MI 48067  
colliers.com/detroit



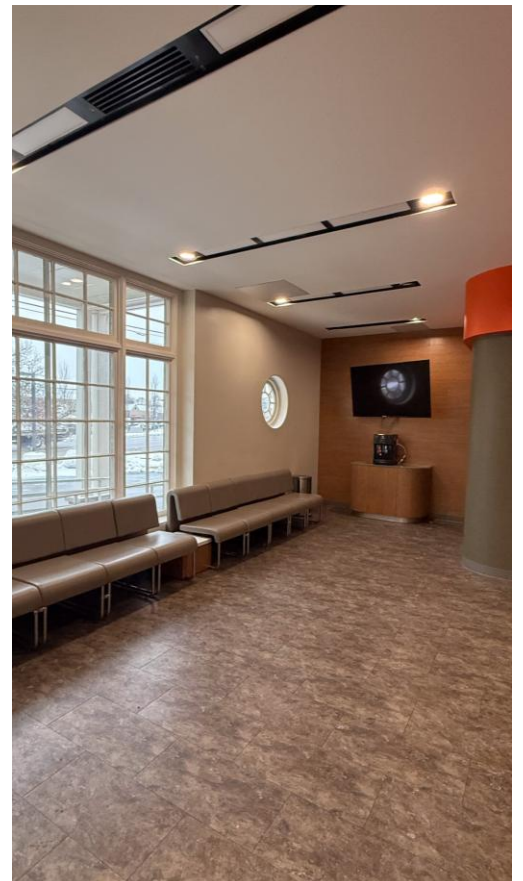
## Property Highlights

- 3,079 SF Medical Office
- Sublease Expires March 2032
- Former Urgent Care Built in 2022
- High-End Finishes - Waiting Area, 4 Exam Rooms, Medication Room, X-Ray Room, Breakroom, 2 Restrooms, and Staff Area
- Suitable for Medical or General Office; *Urgent Care Exclusion*
- High Visibility Corner in Bloomfield Hills
- Monument Signage at Entrance

FORMER URGENT CARE FOR SUBLEASE

Colliers

## Property Photos





## Interior Photos



[illegible]

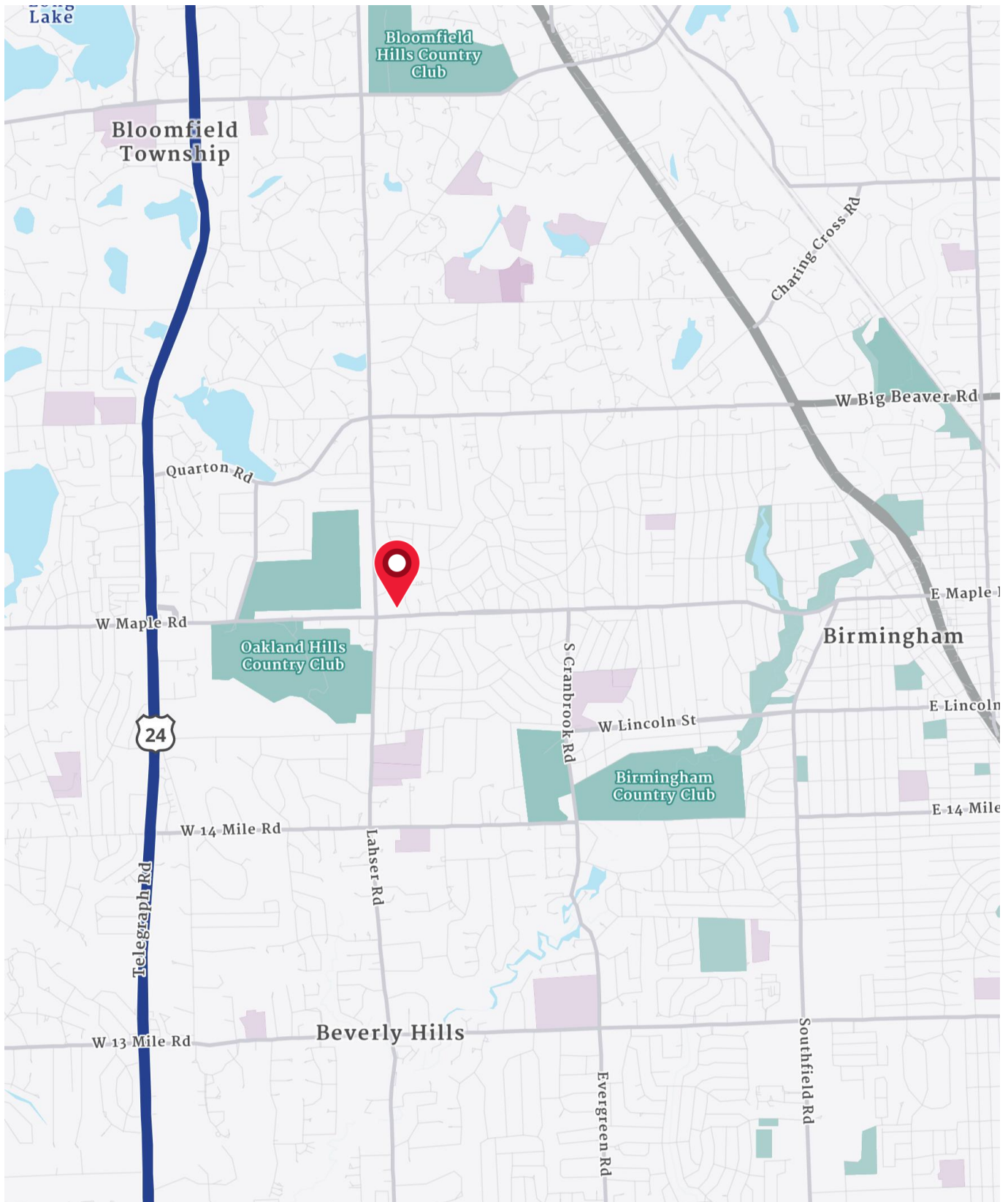


## Property Aerial





# Location Map



# Demographics

CURRENT YEAR SUMMARY	1 MILE RADIUS	3 MILE RADIUS	5 MILE RADIUS
Total Population	6,489	56,272	187,311
Total Households	2,345	22,456	81,617
Total Family Households	1,765	15,873	49,685
Average Household Size	2.74	2.47	2.26
Median Age	46.7	46.3	44.1
Population Age 25+	4,498	40,044	137,888
2010 – 2020 Population: Annual Growth Rate (CAGR)	0.68%	0.63%	0.69%
2020 – 2023 Population: Annual Growth Rate (CAGR)	-0.38%	-0.41%	-0.23%
<b>5 YEAR PROJECTED TRENDS: ANNUAL RATE</b>			
Population	-0.14%	-0.08%	-0.08%
Households	0.25%	0.33%	0.36%
Families	0.11%	0.15%	0.15%
Median Household Income	1.83%	3.34%	3.34%
<b>CURRENT YEAR POPULATION BY SEX</b>			
Male Population / % Male	3,161 / 48.7%	27,472 / 48.8%	90,350 / 48.2%
Female Population / % Female	3,328 / 51.3%	28,800 / 51.2%	96,961 / 51.8%
<b>INCOME &amp; HOUSEHOLDS SUMMARY</b>			
Median Household Income	\$201,107	\$177,263	\$113,369
Average Household Income	\$269,872	\$246,764	\$172,297
Per Capita Income	\$101,340	\$98,458	\$75,065
<b>SUMMARY BUSINESS DATA</b>			
Total Businesses	203	3,813	12,500
Total Daytime Population	6,042	70,347	261,803
Daytime Population: Workers	2,840	41,665	169,188
Daytime Population: Residents	3,202	28,682	92,615

## Data Notes:

- Household population includes persons not residing in group quarters. Average Household Size is the household population divided by total households. Persons in families include the householder and persons related to the householder by birth, marriage, or adoption.
- Income represents the preceding year, expressed in current dollars. Household income includes wage and salary earnings, interest dividends, net rents, pensions, SSI and welfare payments, child support, and alimony.
- Per Capita Income represents the income received by all persons aged 15 years and over divided by the total population.



**Ben Hubert**  
248 417 7150  
ben.hubert@colliers.com

**BEN AND BENJI**  
COLLIERS DETROIT REAL ESTATE



**Benji Rosenzweig**  
248 752 3762  
ben.rosenzweig@colliers.com