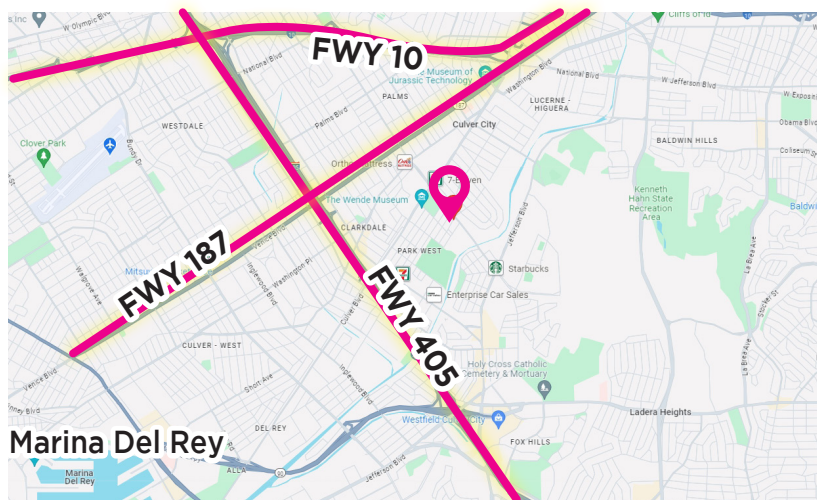


# MEDICAL + OFFICE SPACE FOR LEASE

4385 OVERLAND AVE, CULVER CITY, CA 90230



BUILDING TYPE: OFFICE/MEDICAL

CLASS: C

SQUARE FOOTAGE: +/- 1,605 SF

PARKING RATIO: NONE REQUIRED

ZONING: CN (COMMERCIAL  
NEIGHBORHOOD)

**STEVEN RHEE, MBA**

Vice President | DRE# 01894583

**(626) 733-6688**

srhee@remaxcre.net



RE/MAX ELITE REALTY

**Preston Chong**

Realtor® | DRE# 02152389

**(626) 278-2885**

preston@prestonchongrealty.com

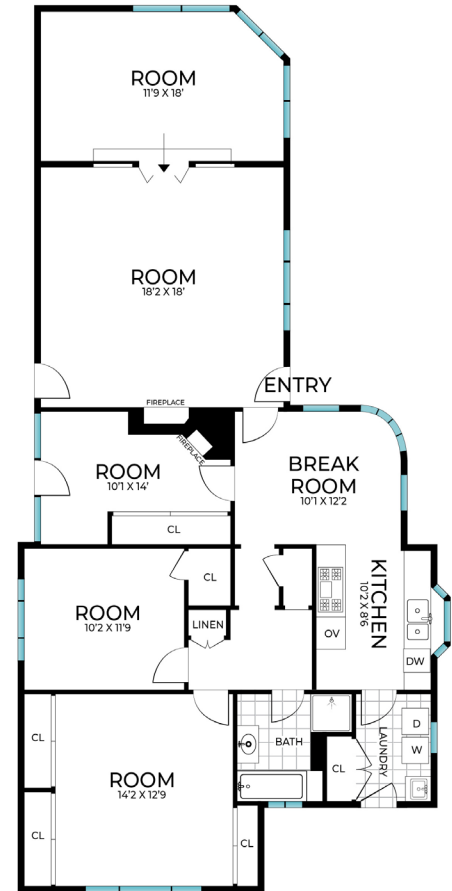


NO WARRANTY OF REPRESENTATION IS MADE TO THE ACCURACY OF THE FOREGOING INFORMATION. TERMS OF SALE OR LEASE AND AVAILABILITY ARE SUBJECT TO CHANGE OR WITHDRAWAL WITHOUT NOTICE. BUYER TO CONFIRM ALL INFORMATION. EACH OFFICE INDEPENDENTLY OWNED AND OPERATED.



# MEDICAL + OFFICE SPACE FOR LEASE

4385 OVERLAND AVE, CULVER CITY, CA 90230



Nestled at 4385 Overland Ave in Culver City, this versatile property combines medical and office space, catering to a range of professional needs. Its central location makes it a desirable choice for both medical practitioners and office-based professionals, offering convenient access for clients and employees. Perfect for Psychiatrists and Psychologists, this property provides the ambiance needed to help clients feel comfortable. The property provides a conducive environment for various medical practices and office operations. Whether you're establishing a new medical practice, expanding your office space, or seeking a hybrid of both, this property in Culver City offers a flexible solution to accommodate your professional endeavors.

**STEVEN RHEE, MBA**

Vice President | DRE# 01894583

**(626) 733-6688**

[srhee@remaxcre.net](mailto:srhee@remaxcre.net)



RE/MAX ELITE REALTY

**Preston Chong**

Realtor® | DRE# 02152389

**(626) 278-2885**

[preston@prestonchongrealty.com](mailto:preston@prestonchongrealty.com)



NO WARRANTY OF REPRESENTATION IS MADE TO THE ACCURACY OF THE FOREGOING INFORMATION. TERMS OF SALE OR LEASE AND AVAILABILITY ARE SUBJECT TO CHANGE OR WITHDRAWAL WITHOUT NOTICE. BUYER TO CONFIRM ALL INFORMATION. EACH OFFICE INDEPENDENTLY OWNED AND OPERATED.