



**MEDICAL ASSET  
MANAGEMENT**  
MEDICAL PROPERTY SPECIALISTS



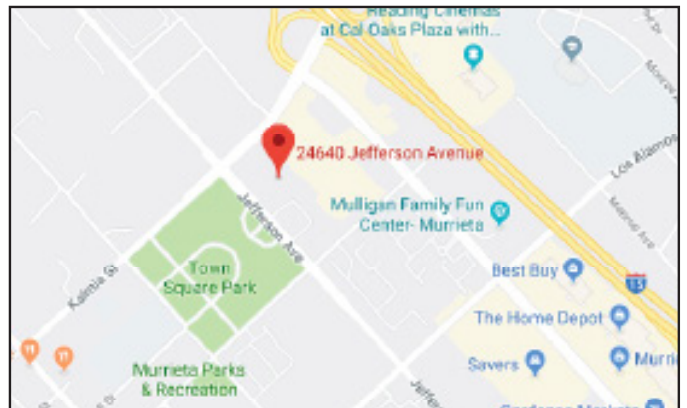
Olivewood Professional Building | 24640 Jefferson Ave. | Murrieta, CA  
Medical / Office Suites For Lease

Available Suites	Sq. Ft.	Rental Rate
Suite 208	1,321 RSF	\$1.95/SF NNN

**Term** 3 to 10 years

**Features**

- New construction, roof coating and interior paint
- Part of a 4 building business park
- Located in downtown Murrieta across from City Hall & Town Square Park
- Walking distance to Village Walk Plaza and major shopping centers
- Easy access to the 15 freeway
- Building & Monument Signage Available



**Contact**

**Brock Burnett**  
(818) 990-5200  
brockb@medicalasset.com  
DRE#: 01814211

**Mitch Yankowitz**  
(310) 517-4861  
mitchy@medicalasset.com  
DRE#: 01360137

[www.medicalasset.com](http://www.medicalasset.com)

**South Bay**  
201 Continental Blvd., Ste. 210  
El Segundo, CA 90245

**Downtown Los Angeles**  
1400 S. Grand Ave., Ste. 808  
Los Angeles, CA 90015

**San Fernando Valley**  
5411 Eriwanda Ave., Ste. 208  
Tarzana, CA 91356

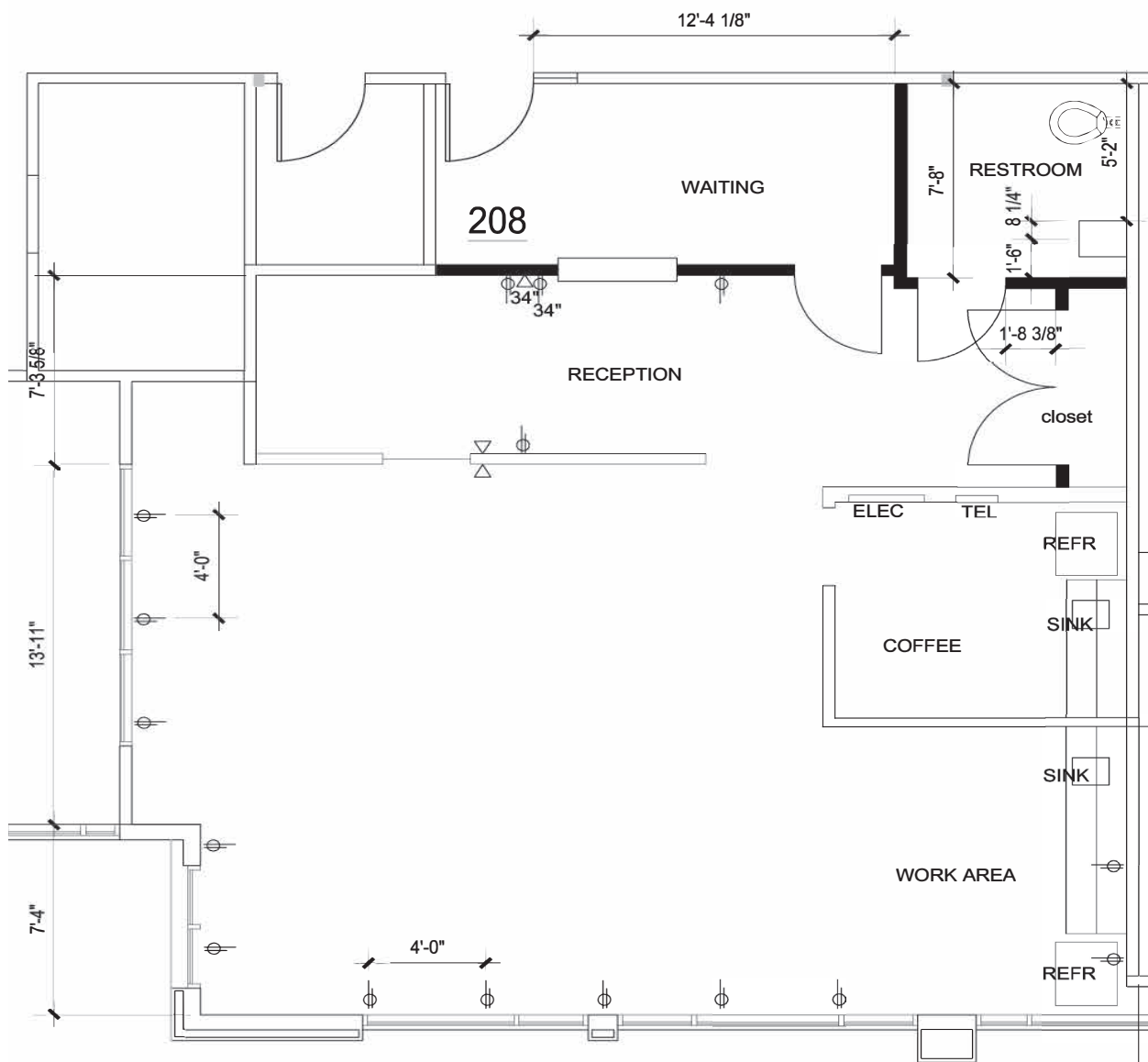
**Long Beach**  
1040 Elm Ave., Ste. 308  
Long Beach, CA 90813



**MEDICAL ASSET  
MANAGEMENT**  
MEDICAL PROPERTY SPECIALISTS

Olivewood Professional Building | 24640 Jefferson Ave. | Floorplans

**Suite 208**  
**1,321 RSF**



The information contained herein is deemed reliable, but cannot be guaranteed by Medical Asset Management and is subject to change.