

101 NORTH MAIN

GREENVILLE, SC 29601

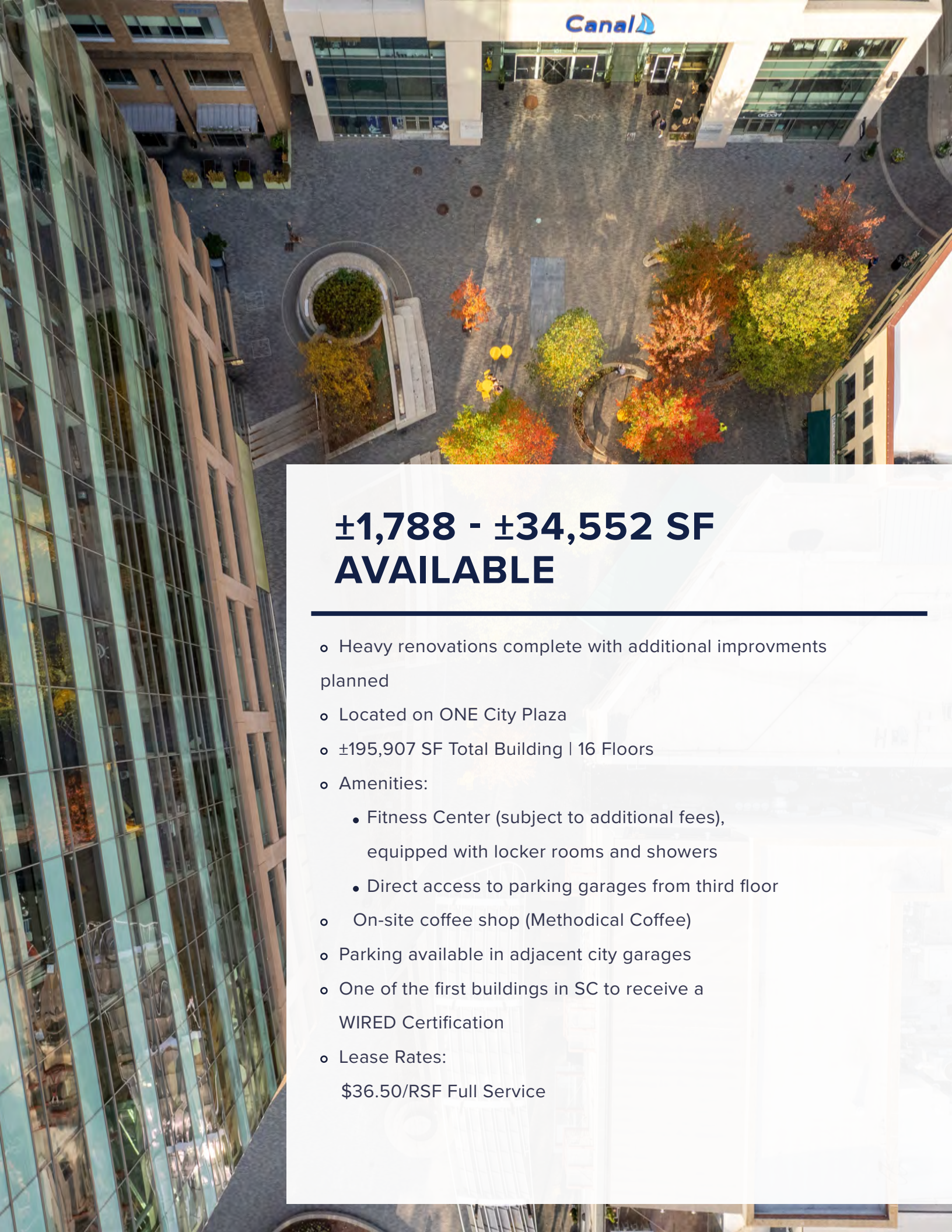


Up to ±34,552 SF AVAILABLE
Class A Downtown Office Space

 View online

 **realop**
INVESTMENTS

CBRE



±1,788 - ±34,552 SF AVAILABLE

- Heavy renovations complete with additional improvements planned
- Located on ONE City Plaza
- ±195,907 SF Total Building | 16 Floors
- Amenities:
 - Fitness Center (subject to additional fees), equipped with locker rooms and showers
 - Direct access to parking garages from third floor
- On-site coffee shop (Methodical Coffee)
- Parking available in adjacent city garages
- One of the first buildings in SC to receive a WIRED Certification
- Lease Rates:
 - \$36.50/RSF Full Service



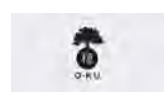
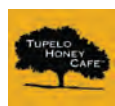
▶ Take a Tour of the Newly Renovated Lobby

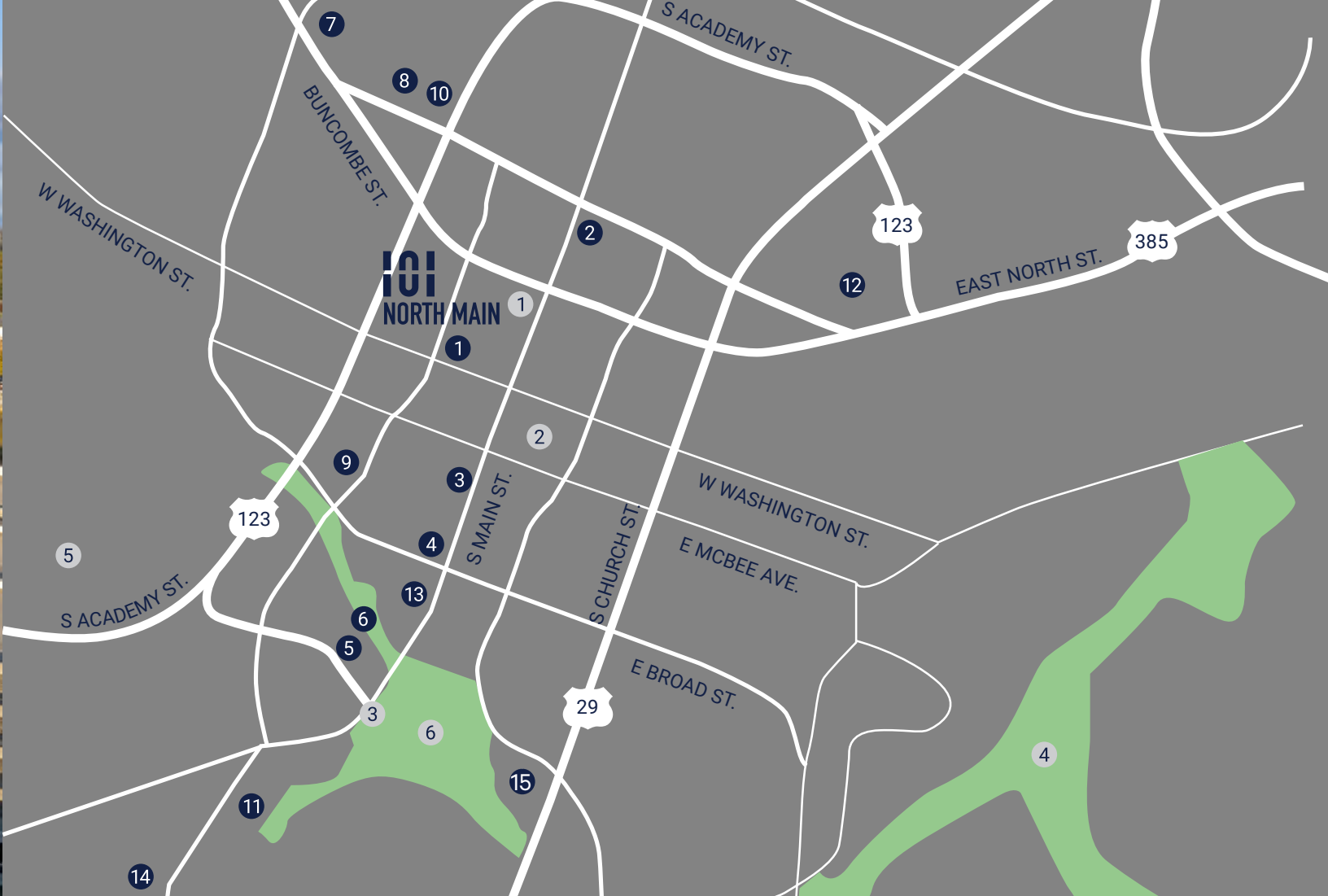




CLASS A DOWNTOWN OFFICE SPACE

DINING





Located in the heart of Greenville’s award-winning downtown, 101 N Main is pedestrian friendly to over 120 restaurants, 100 retailers, more than six hotels and many downtown attractions such as Falls Park and the Swamp Rabbit Trail.

EVENT VENUES & ACCOMMODATIONS

- ① Aloft Hotel
- ② Hyatt Regency
- ③ Westin Poinsett
- ④ Courtyard Marriott
- ⑤ Hampton Inn
- ⑥ Embassy Suites
- ⑦ Upcountry Museum
- ⑧ Greenville County Museum of Art
- ⑨ Center Stage
- ⑩ Greenville Little Theatre
- ⑪ Warehouse Theatre
- ⑫ Bon Secours Wellness Arena
- ⑬ Peace Center for the Performing Arts
- ⑭ Fluor Field
- ⑮ Grand Bohemian Lodge

HEALTH & WELLNESS

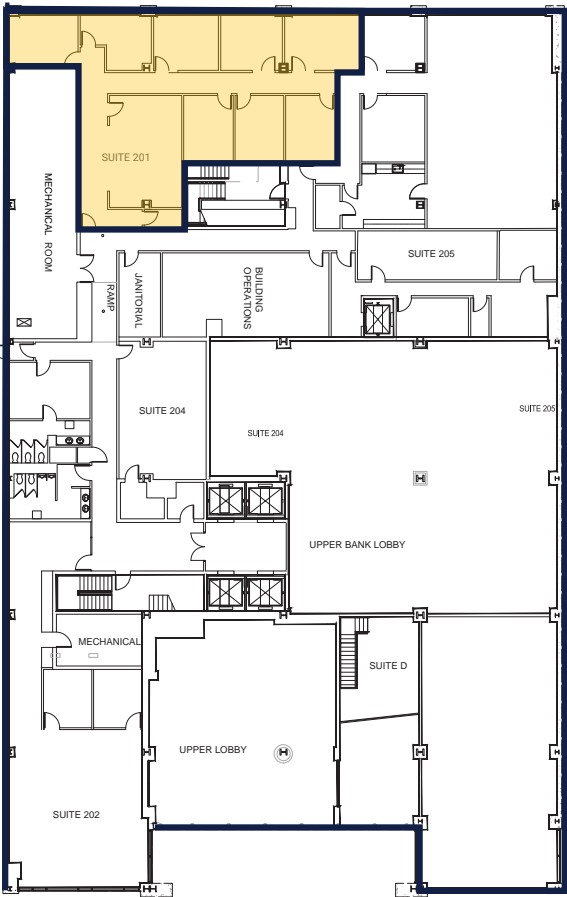
- ① Carolina Fitness
- ② Anytime Fitness
- ③ Falls Park on the Reedy River
- ④ Cleveland Park
- ⑤ Kroc Center
- ⑥ Swamp Rabbit Trail

FLOOR PLANS

2ND FLOOR

±2,926 SF AVAILABLE

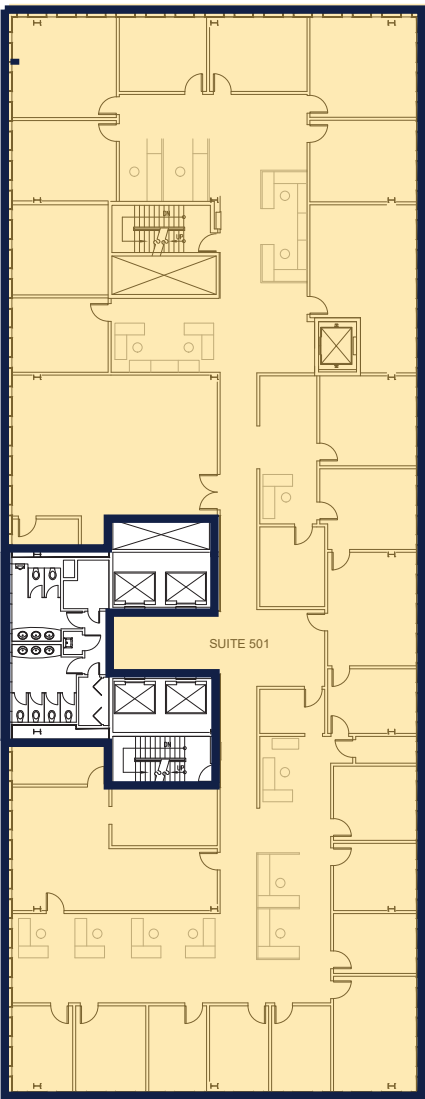
Suite 201 | ±2,926 RSF



5TH FLOOR

±12,856 SF AVAILABLE

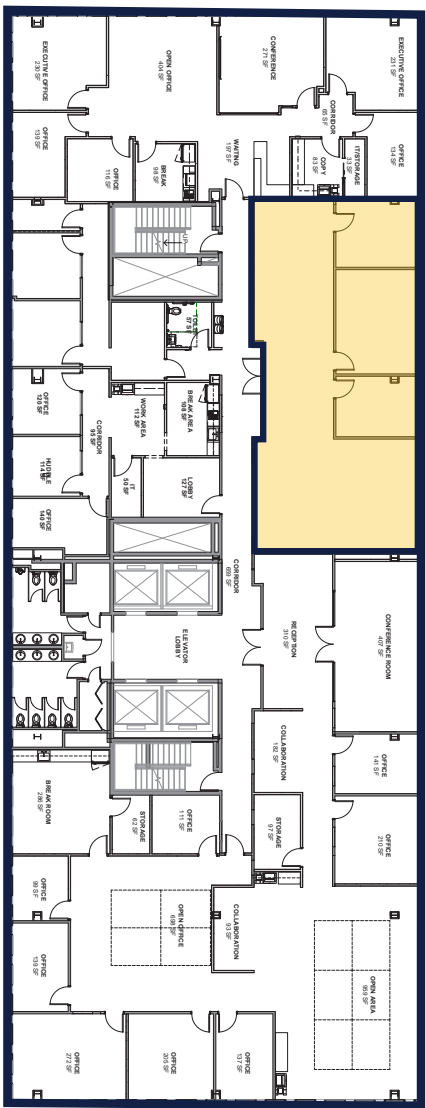
Suite 501 | ±12,856 RSF



7TH FLOOR

±2,115 SF AVAILABLE

Suite 701 | ± 2,115 RSF

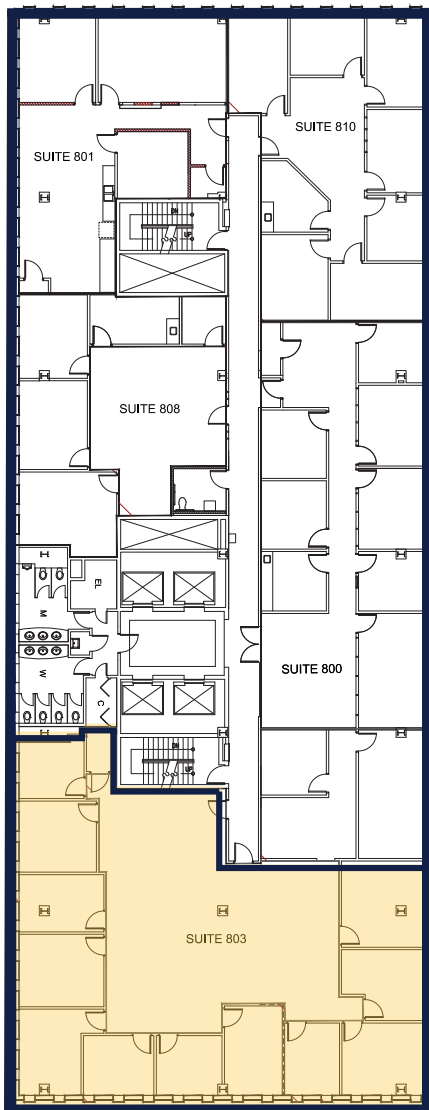


±1,788 - ±34,552 SF AVAILABLE FOR LEASE

8TH FLOOR

±4,208 SF AVAILABLE

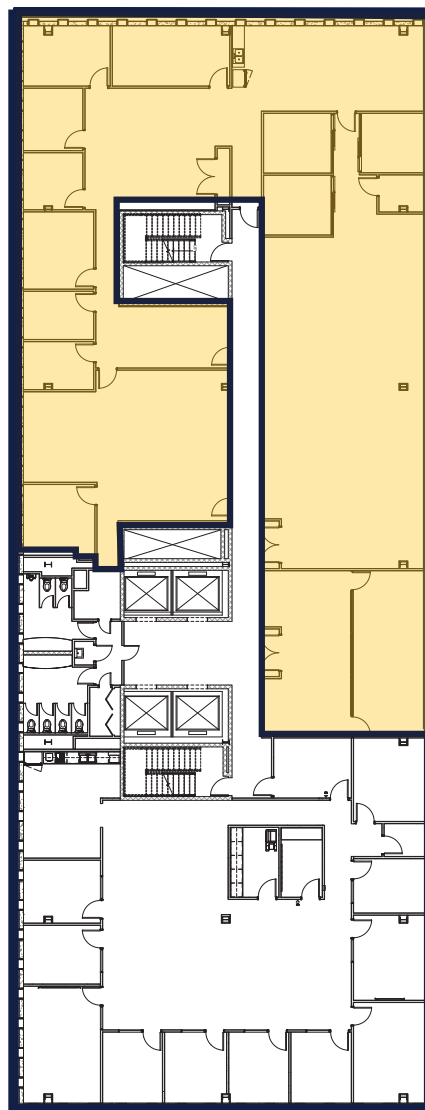
Suite 803 | ±4,208 RSF



9TH FLOOR

± 7,420 SF AVAILABLE

Suite 901 | ±7,420 RSF

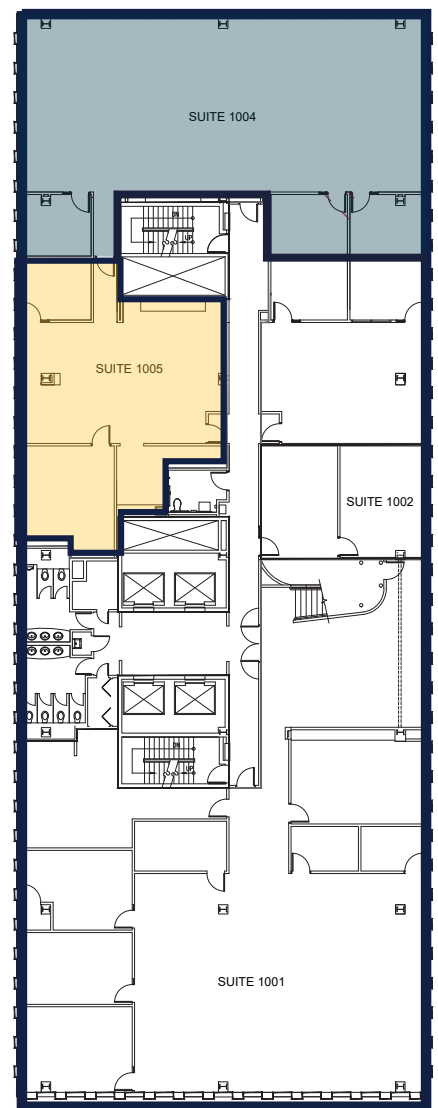


10TH FLOOR

±5,027 SF AVAILABLE

Suite 1004 (Sublease) | ±3,239 RSF

Suite 1005 | ±1,788 RSF



101 NORTH MAIN



FOR LEASING INQUIRIES:

CHARLES GOUCH, CCIM, SIOR

Senior Vice President

+1 864 527 6035

charles.gouch@cbre.com

BLAINE HART, SIOR

Senior Vice President

+1 864 527 6054

blaine.hart@cbre.com

SHELBY DODSON, LEED AP

Senior Vice President

+1 864 527 6022

shelby.dodson@cbre.com

© 2025 CBRE, Inc. All rights reserved. This information has been obtained from sources believed reliable, but has not been verified for accuracy or completeness. Any projections, opinions, or estimates are subject to uncertainty. The information may not represent the current or future performance of the property. You and your advisors should conduct a careful, independent investigation of the property and verify all information. Any reliance on this information is solely at your own risk. CBRE and the CBRE logo are service marks of CBRE, Inc. and/or its affiliated or related companies in the United States and other countries. All other marks displayed on this document are the property of their respective owners. Photos herein are the property of their respective owners and use of these images without the express written consent of the owner is prohibited.

