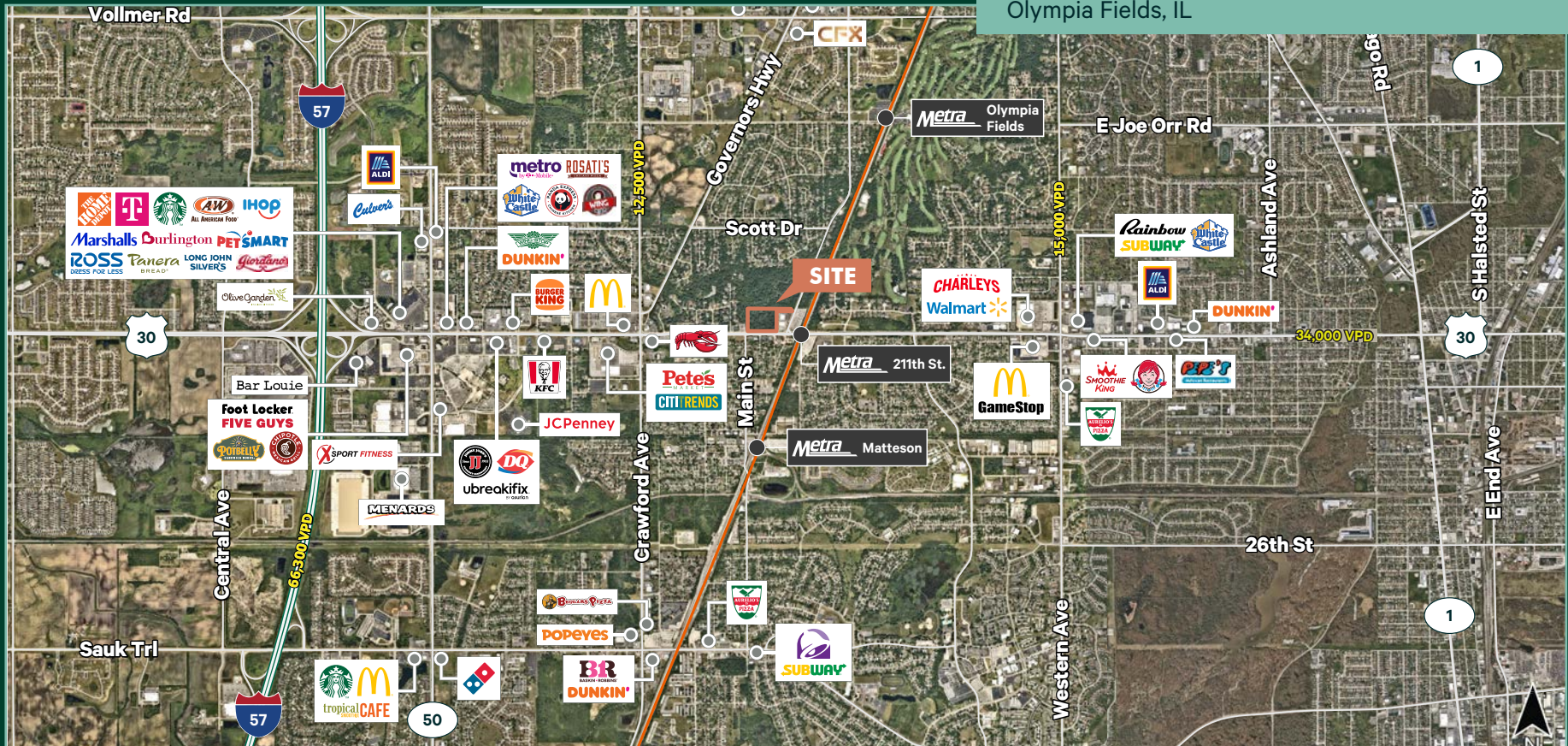


Retail, Self-Storage & Multifamily Development Opportunity

21000 Olympian Way
Olympia Fields, IL



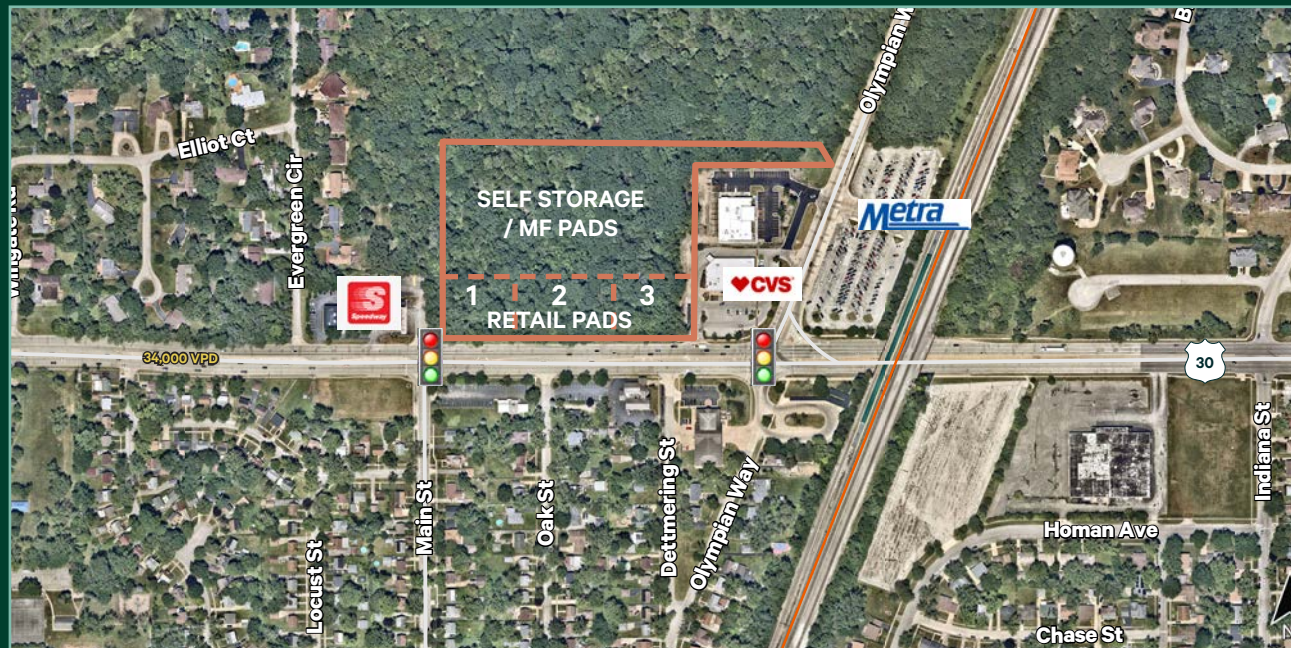
Property Highlights

21000 Olympian Way
Olympia Fields, IL

For Sale ±10.33 Acres - Divisible

- + Sandwiched between two well performing McDonalds' restaurants
- + Zoned B-3 Commercial Service and Wholesale District
- + The Village will consider multifamily, self storage and retail development
- + Owner Financing and Land Banking Available
- + Located at a 4 way lighted intersection
- + Directly east of the I-57 and US Hwy 30 interchange and the I-57 exit ramps
- + Frontage along Lincoln Highway (Route 30) between CVS and Speedway
- + Matteson Elementary School District 162 and Rich Township School District 227
- + Traffic Counts:
34,000 vehicles per day on US Highway 30
66,300 vehicles per day on I-57
- + PIN Number: 31-23-200-017
- + Taxes: \$45,755
- + Please call for additional Information

Site Aerial

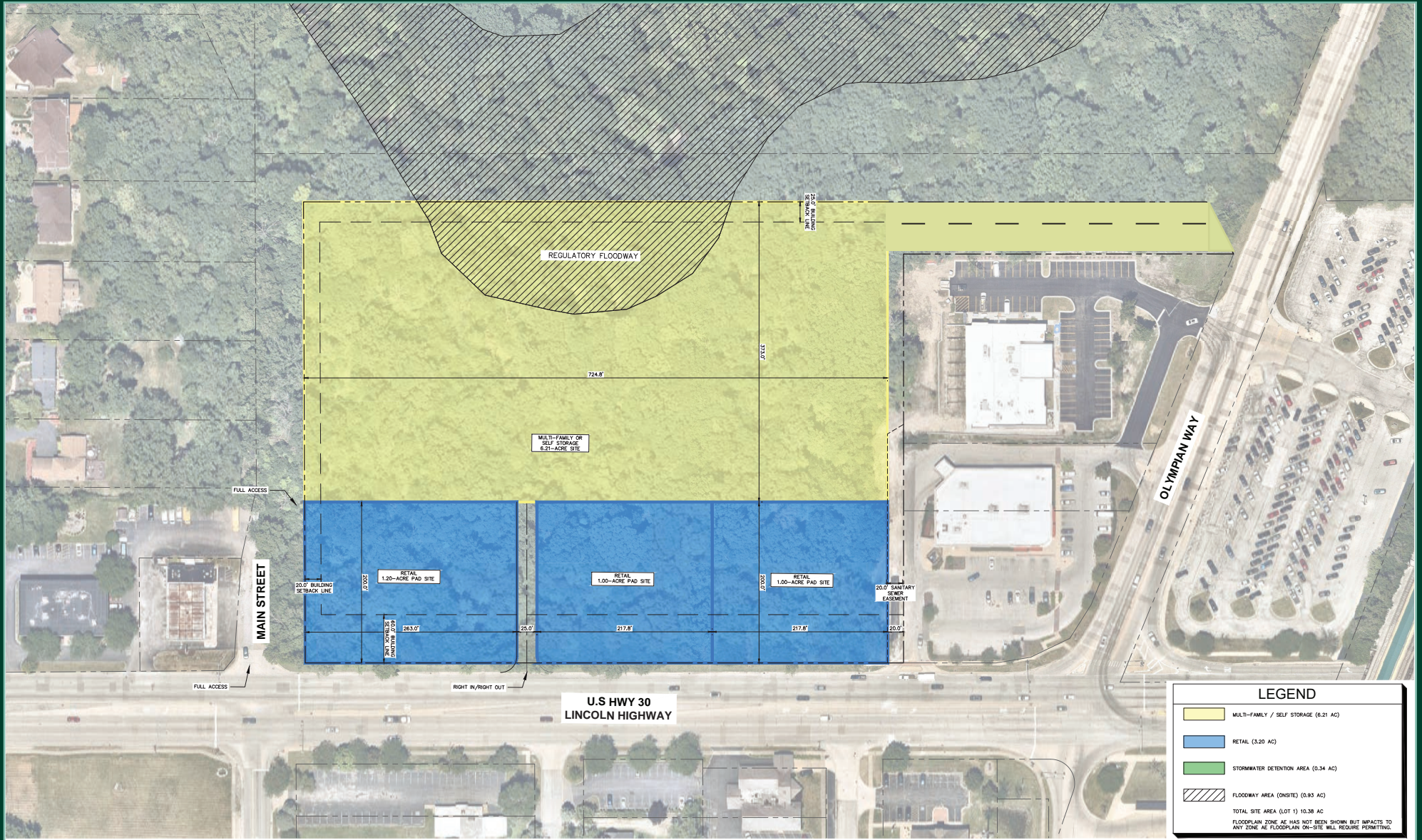


Pricing Information

- + **Retail Pads:**
 - 1 - \$1,000,000 - 1.20ac
 - 2 - \$750,000 - 1.0 ac
 - 3 - \$500,000 - 1.0 ac (special pricing for a developer bringing the first National to the site)
- + **Self Storage/Multi Family Pads:**
\$1,100,000 - 7.13 ac

Site Plan

21000 Olympian Way
Olympia Fields, IL



Area Amenities and Transportation Corridors

21000 Olympian Way
Olympia Fields, IL

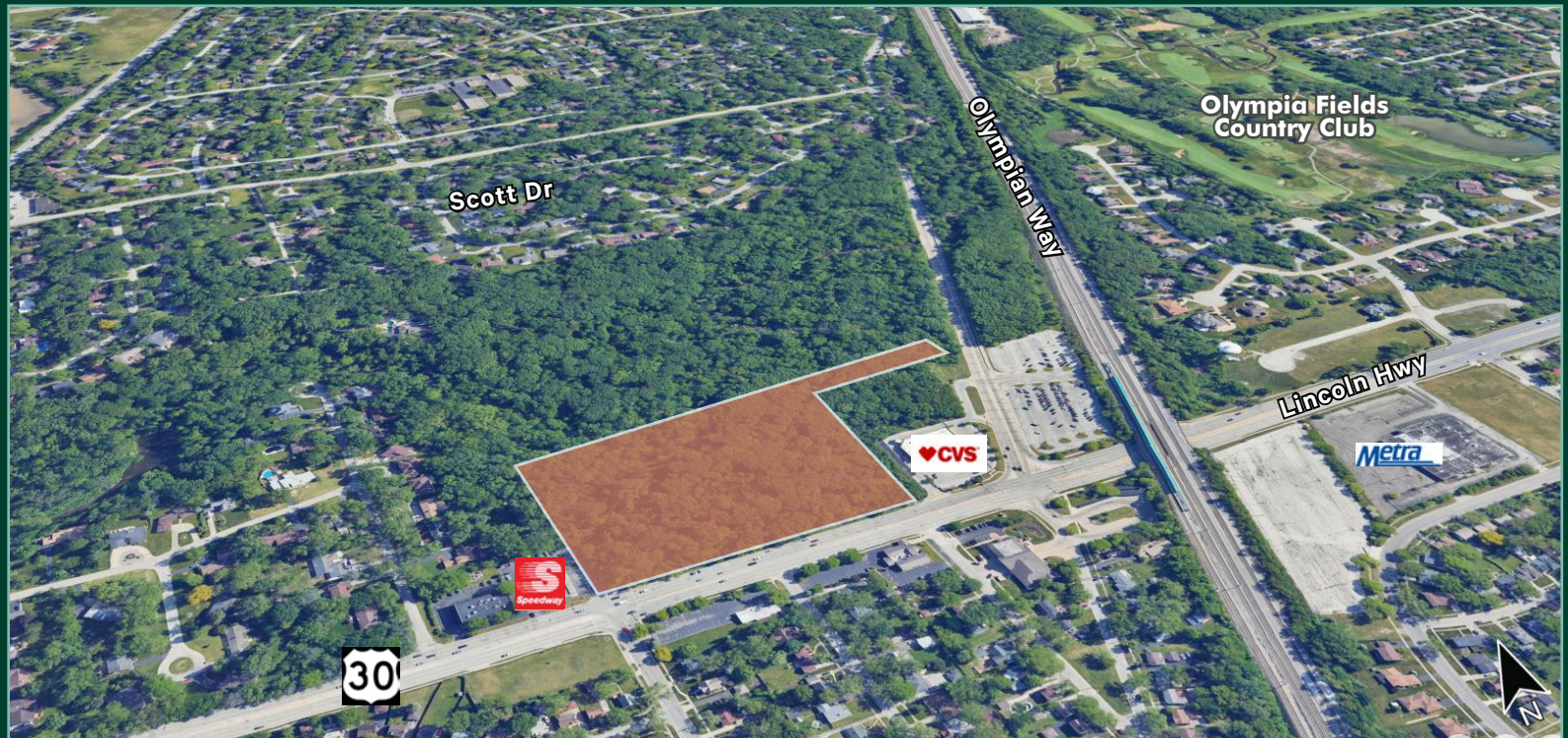


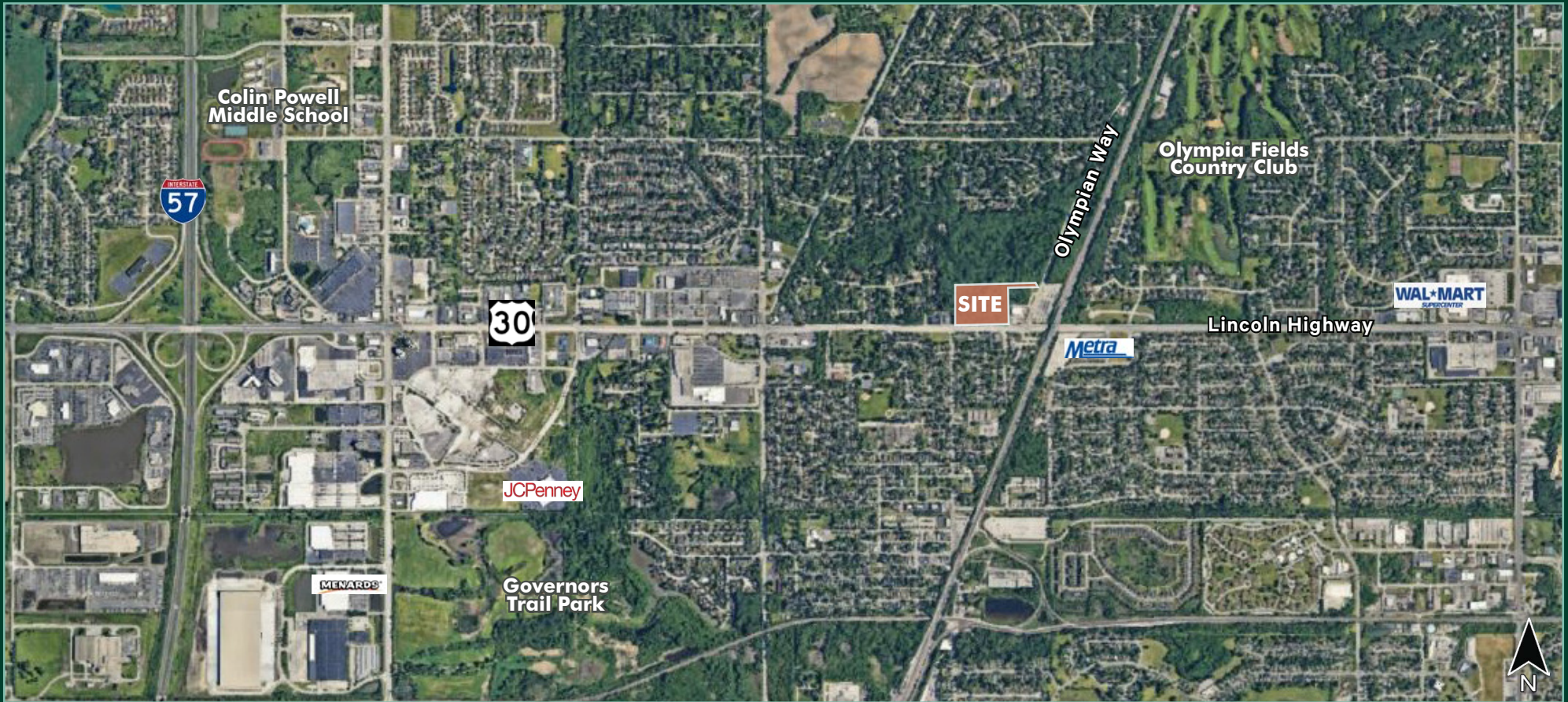
Demographic Snapshot

21000 Olympian Way
Olympia Fields, IL

	1 MILE	3 MILES	5 MILES
Population	7,779	72,790	162,126
Households	2,927	28,248	61,883
Average Household Income	\$102,474	\$97,250	\$96,123
Average Housing Value	\$246,301	\$239,299	\$234,875

Site Aerial





Contact Us

Matt Ishikawa

Senior Vice President
+1 630 573 7068
matt.ishikawa@cbre.com

Mario Melone

Vice President
+1 630 573 7112
mario.melone@cbre.com

© 2024 CBRE, Inc. All rights reserved. This information has been obtained from sources believed reliable, but has not been verified for accuracy or completeness. You should conduct a careful, independent investigation of the property and verify all information. Any reliance on this information is solely at your own risk. CBRE and the CBRE logo are service marks of CBRE, Inc. All other marks displayed on this document are the property of their respective owners, and the use of such logos does not imply any affiliation with or endorsement of CBRE. Photos herein are the property of their respective owners. Use of these images without the express written consent of the owner is prohibited.