

# LAB / OFFICE FOR SALE

## 2434 Bishop Circle E

*Dexter, Michigan*



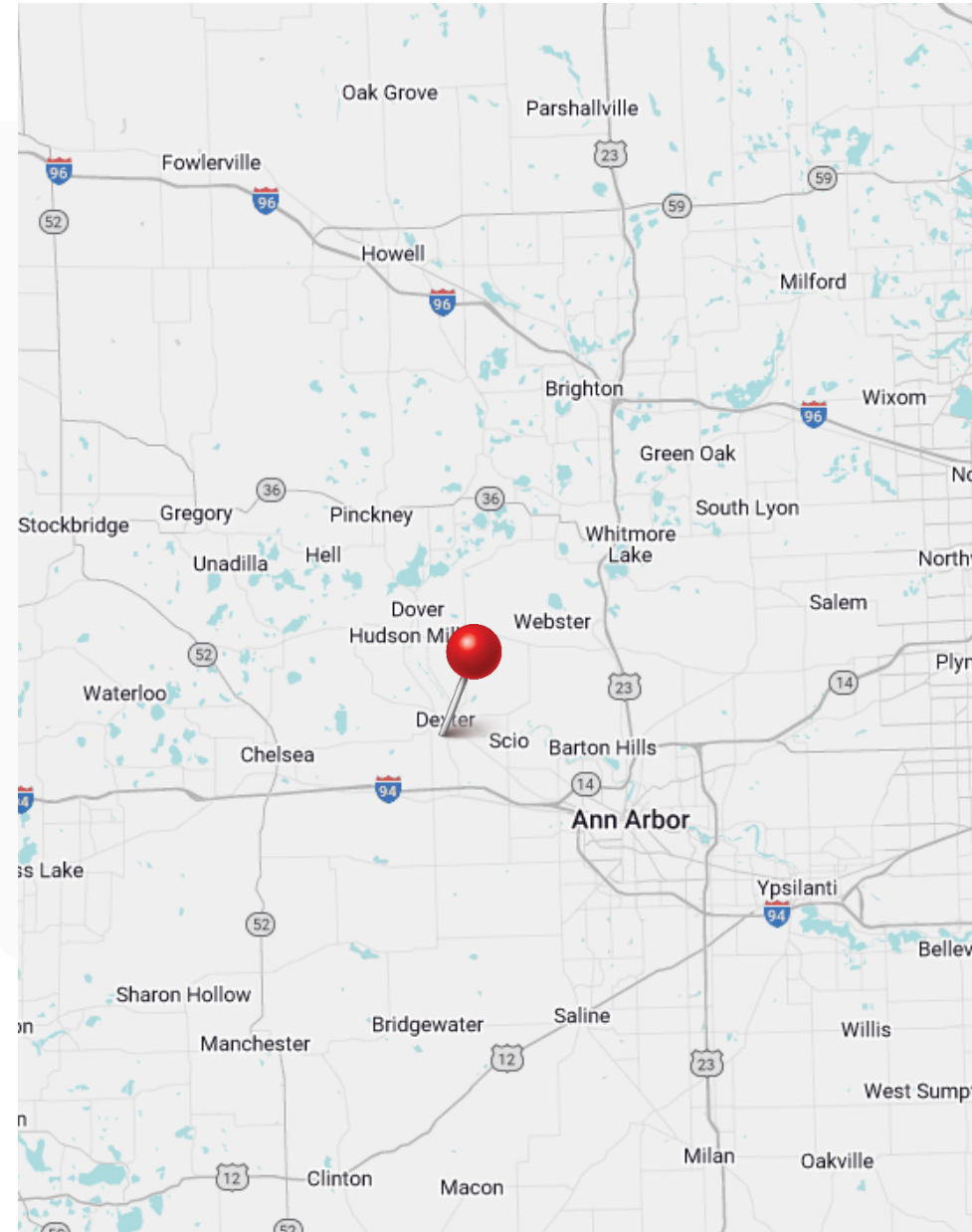
**Kyle Passage**  
Director  
+1 248 358 6113  
[kyle.passage@cushwake.com](mailto:kyle.passage@cushwake.com)



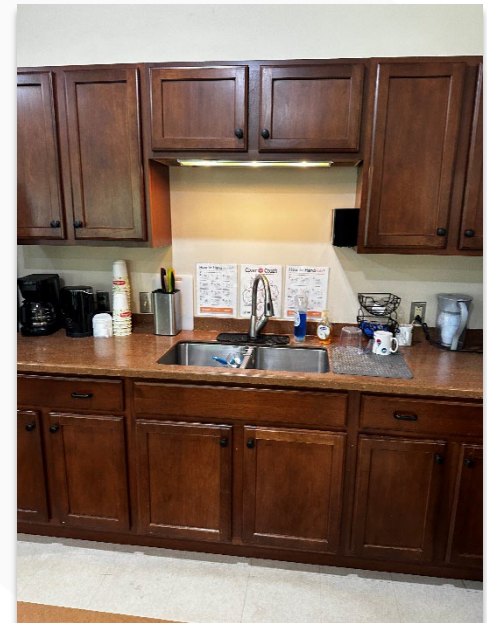
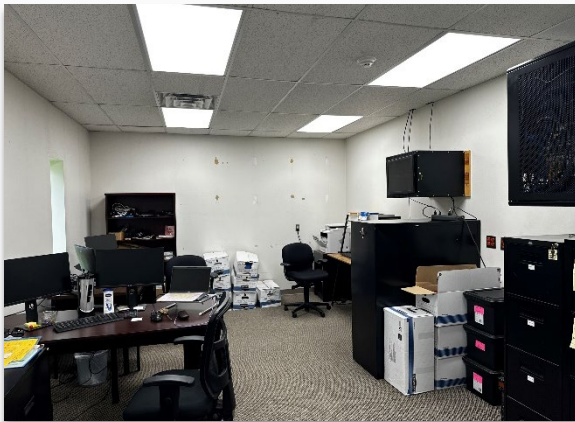
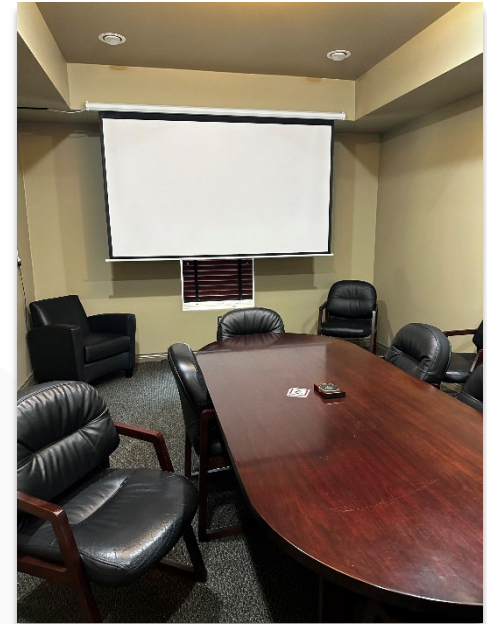


### PROPERTY HIGHLIGHTS

Total Building Square Footage	9,588
Building Use:	Lab, Office, Medical, Flex
Total Floors	1
Total Land Acreage	3.32 acres
Parking	2.97 spots / 1,000 SF
Power	800 a / 120 v-208 v / 3 phase
Zoning	RD
Year Built	1994 / Expanded in 2009
Parcel ID	08-08-07-125-017
Taxes	\$39,648.21
SEV	\$702,100
Asking Price	\$1,295,000 (\$135 / SF)
Misc:	<p>Located in highly desirable park in Dexter</p> <p>Minutes from downtown Ann Arbor</p> <p>Generator onsite</p> <p>Hoods in lab areas (can remain or be removed)</p>

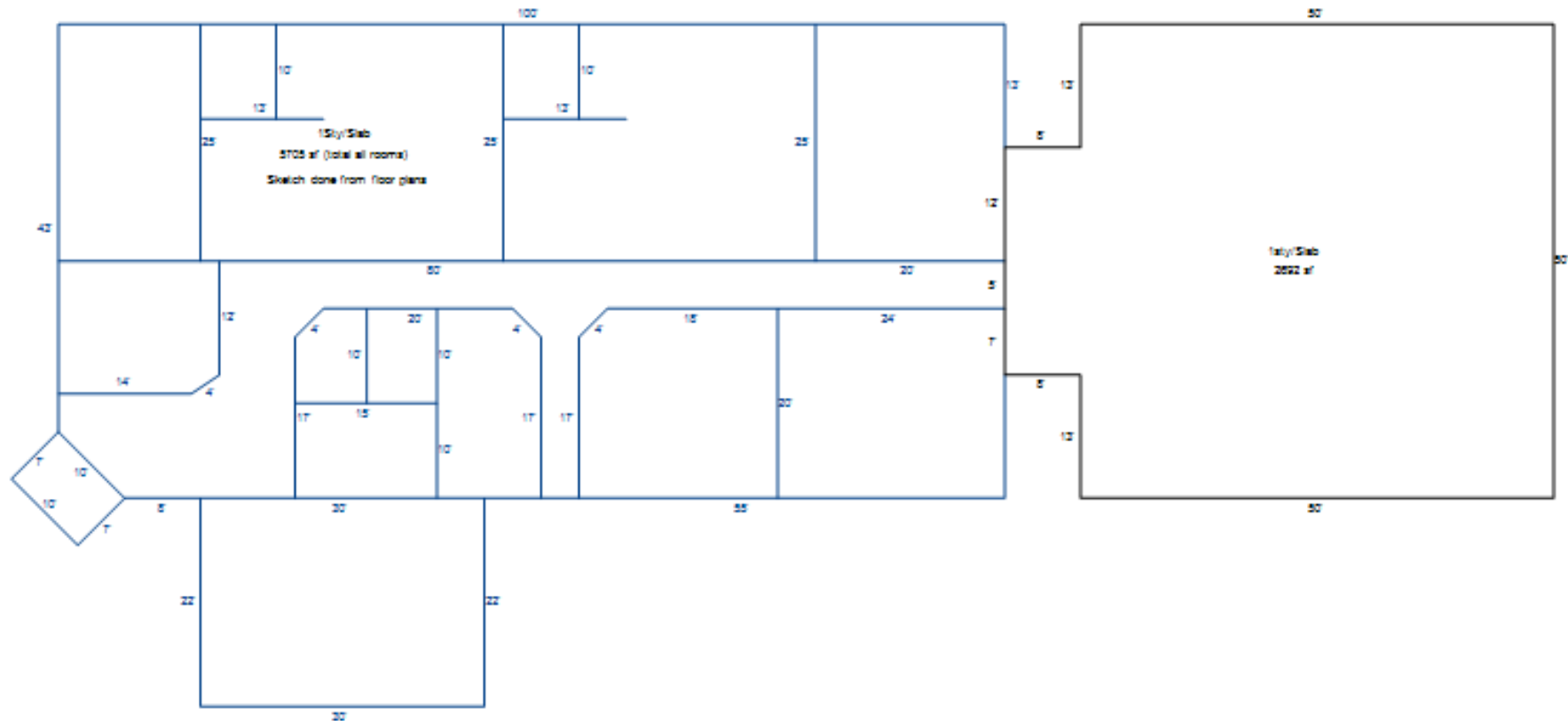




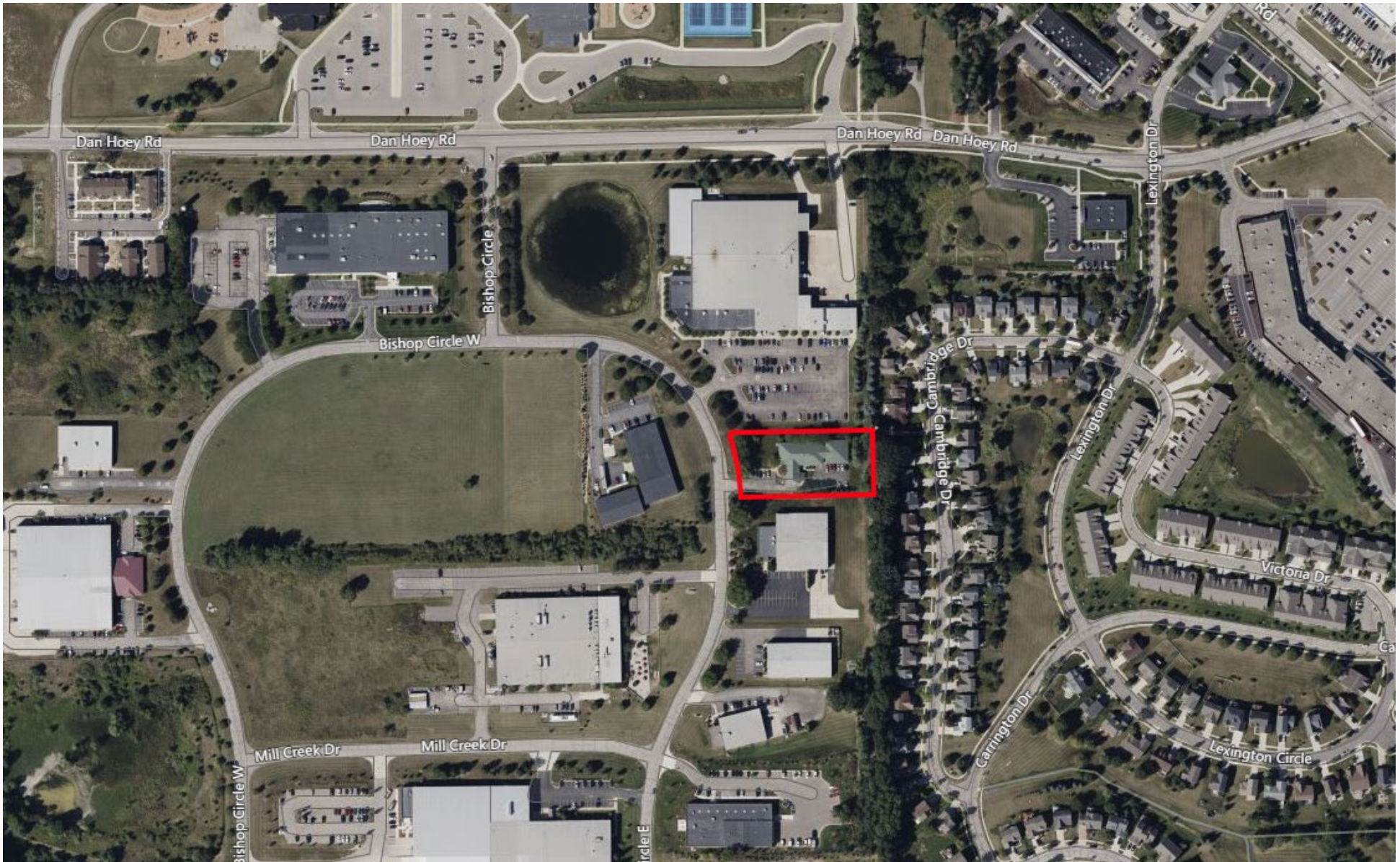




**FOR SALE**  
**2434 Bishop Circle E**  
*Dexter, Michigan*







©2025 Cushman & Wakefield. All rights reserved. The information contained in this communication is strictly confidential. This information has been obtained from sources believed to be reliable but has not been verified. NO WARRANTY OR REPRESENTATION, EXPRESS OR IMPLIED, IS MADE AS TO THE CONDITION OF THE PROPERTY (OR PROPERTIES) REFERENCED HEREIN OR AS TO THE ACCURACY OR COMPLETENESS OF THE INFORMATION CONTAINED HEREIN, AND SAME IS SUBMITTED SUBJECT TO ERRORS, OMISSIONS, CHANGE OF PRICE, RENTAL OR OTHER CONDITIONS, WITHDRAWAL WITHOUT NOTICE, AND TO ANY SPECIAL LISTING CONDITIONS IMPOSED BY THE PROPERTY OWNER(S). ANY PROJECTIONS, OPINIONS OR ESTIMATES ARE SUBJECT TO UNCERTAINTY AND DO NOT SIGNIFY CURRENT OR FUTURE PROPERTY PERFORMANCE.